

# HSF

**NOTES:**

Current Rating: 3.0AMP  
 Contact Resistance: 20mΩ Max  
 Withstand Voltage: 1000V AC/DC  
 Insulation Resistance: 1000MΩ Min  
 Operation Temperature: -40°C to +105°C

Contact Material: Brass Or Phosphor Bronze  
 Contact plating: Au Or Sn over Ni  
 Insulator Material: PBT + 30%G.F UL94V-0

6P Without Slot "M" and "N"  
 8P-12P With Slot "M", Without Slot "N"  
 14P-64P With Slot "M" and "N"

## Ordering Information

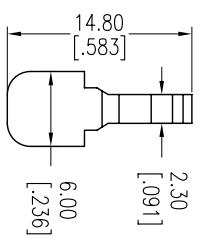
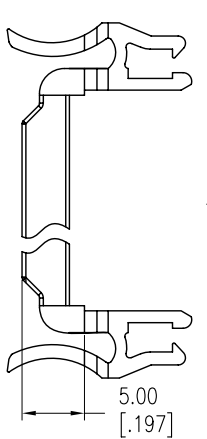
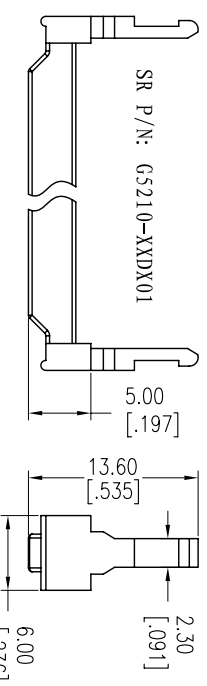
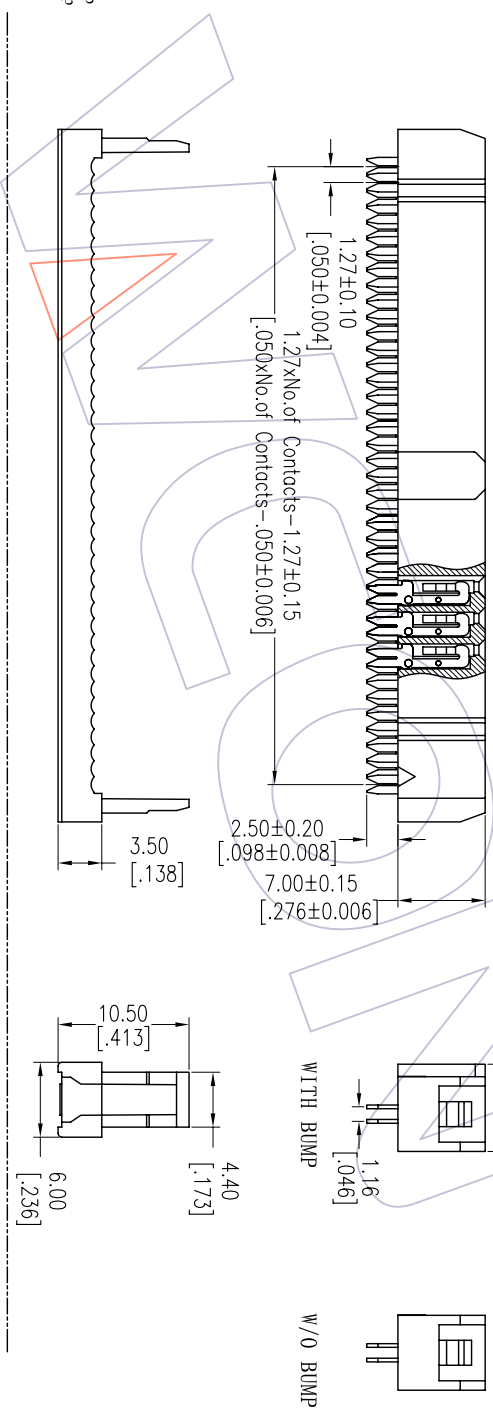
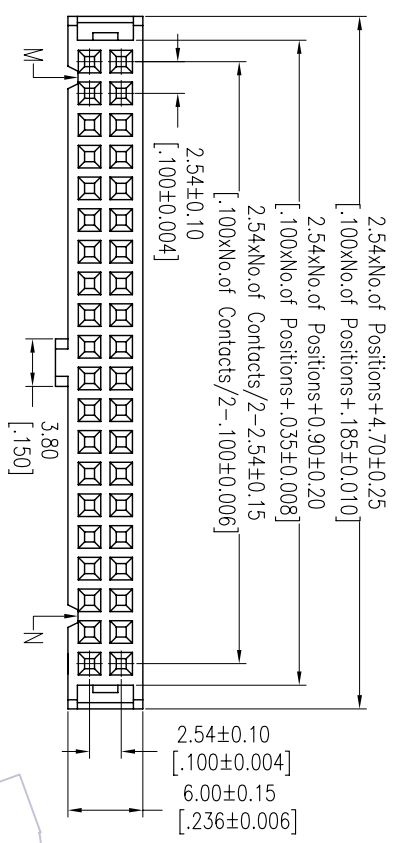
5212-XX Y B XX B X 0 1

Two Parts  
 Cont+Cover 06P 26P Contact Material  
 08P 30P B=Brass  
 10P 34P P=Phosphor  
 12P 36P Bronze  
 Contact Plating  
 14P 40P SP=Gold Flash/Ni  
 16P 44P S3=10u'Gold/Ni  
 18P 50P S4=1.5u'Gold/Ni  
 20P 60P S5=30u'Gold/Ni  
 22P 64P SN=30u' Tin  
 24P

Color Insulator  
 B=Black  
 G=Grey(427C)  
 W=White Bump

Bump  
 N=V/O Bump  
 W=With Bump

Item	Pitch	Mating
Standard	2.54	3110/3210
Alternate		



REV	DATE	MODIFICATION DESCRIPTION	CHANGE	OPERATION	DRAW	DATE	SCALE	FIT	PART NO.	TITLE:	WCON-Dongguan	WCON-Kunshan
A0	2012/12/28	NEW	---	XX	JYHuang	2012/12/28	mm	A4	5212-XXYBXXBX01	2.54 IDC SOCKET+SR (ONE SIDE CONTACT)	Tel: +86 769 85358920 Fax: +86 769 85358915 E-mail: sdies@wcon.com	Tel: +86 512 57468408 Fax: +86 512 57468468 E-mail: sdies@wcon.com
				XX	CHECK	DATE	SIZE	1/1	5212-XXYBXXBX01	Customer NO.	Http: www.wcon.com	
				X.XXX	± 0.15	APPROVE	DATE	PROJ.	5212-XXYBXXBX01	Customer NO.	WCON-Dongguan Tel: +86 769 85358920 Fax: +86 769 85358915 E-mail: sdies@wcon.com	
				Angle	± 3'	DATE	1/1	PROJ.	5212-XXYBXXBX01	Customer NO.	WCON-Kunshan Tel: +86 512 57468408 Fax: +86 512 57468468 E-mail: sdies@wcon.com	

# WCON

## X-ON Electronics

Largest Supplier of Electrical and Electronic Components

*Click to view similar products for [wcon](#) manufacturer:*

Other Similar products are found below :

[2185-140SG0AYNT1](#) [1125-1206G0S155C002](#) [2263-205SG0DYNT6](#) [2185-207ZG0CYNT1](#) [2157-140SG0CYNT1](#) [1125-2212G0S280C001](#)  
[WF2543-1H03B01](#) [WF2543-1H04B01](#) [1220-1210G0M087P1](#) [WF2543-1H07B01](#) [2185DN1-205SG0CYNT1](#) [3622-S040-027G1R02](#) [2263-222RG0DYNT1](#) [1215-2114G0S076C002](#) [1325-1208G0Z093CT01](#) [1125-2208G0S360C001](#) [2220T-206MS0CUNT2](#) [3622-P040-038G1R02](#)  
[WF1501-WM09ER1](#) [1125-1206G0M113CR01](#) [WF2005-2H09W01](#) [6223-09FMNS0B02](#) [6212-26FHS0B01](#) [3220-20SW0BST1](#) [WF2005-WR02ET2](#) [2185DN2-106SG0CYNT1](#) [2185-240SG0AYNT1](#) [2111P-232SG0FYNT4](#) [3111-20MSNBK00R1](#) [1125-2205G0S210C001](#) [2185-208SS0CYNT1](#) [2159-213RG0CUNT1](#) [2263D-204SG0DYNT6](#) [2185-209SS1CYNT2](#) [2211-112MG0CYNR4](#) [2227T-204MG3CUNR1](#) [2185-210SG0CYNR1](#) [6212-26MHS0B01](#) [3610-S020-040G1R01](#) [WF3001-2WR03BA1](#) [WF1001A-WZ06ET1](#) [6321D-040SDS1PNT01](#) [2185-208SSNCYNT1](#) [6320D-040RDS1PNT01](#) [WF2547-2H06B01](#) [2135-207MH3CUNR3](#) [2243-211WG0CUNT2](#) [2185-104ZG0CYNR1](#) [2272-209RG0CUNT1](#) [WF2549-2WS10S0B01](#)