



NOTES:

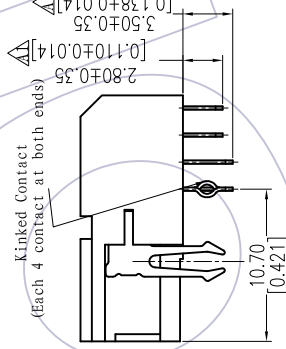
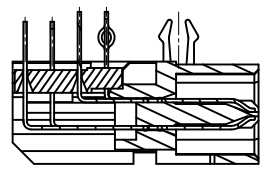
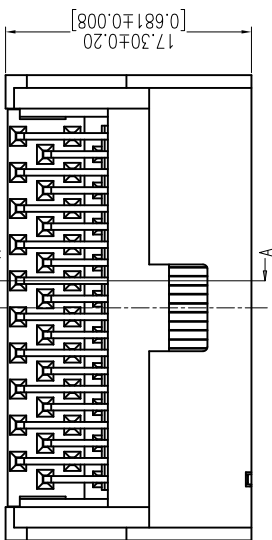
Current Rating: 0.5A/Contact
 Voltage Rating: 250V AC
 Contact Resistance: 35milliohm Max
 Withstand Voltage: 500V AC/DC
 Insulation Resistance: 500Megohm Min
 Operation Temperature: -20°C to +105°C

Housing Material: PBT+30%G.F UL94V-0 BK
 Cover Material: PBT+30%G.F UL94V-0 BK
 Terminal Material: Phosphor Bronze
 Board Lock Material: Phosphor Bronze
 Terminal plating: Sn-Au over Ni
 Board Lock plating: Sn over Ni

Ordering Information

6320D-XXX RD XX P X X OX

No. of Pins Contact Plating Type Packing
 S1=3u"Gold/Tin W: With Board Lock T=Tube
 S2=5u"Gold/Tin N: Without Board Lock



Pin 数	A	B	C	D	E
20	15.69	13.23	11.43	18.54	20.03
26	19.50	17.04	15.24	22.35	23.84
30	22.04	19.58	17.78	24.89	26.38
34	24.58	22.12	20.32	27.43	28.92
40	28.39	25.93	24.13	31.24	32.73
50	34.74	32.28	30.48	37.59	39.08
60	41.09	38.63	36.83	43.94	45.43
68	46.17	43.71	41.91	49.02	50.51
80	53.79	51.33	49.53	56.64	58.13
100	66.49	64.03	62.23	69.34	70.83
120	79.19	76.73	74.93	82.04	83.53

REV	DATE	MODIFICATION DESCRIPTION	CHANGE	DIM	TOL	ANGLE	SHEET	SIZE	UNIT	SCALE	FIT	PART NO.
A0	2012/07/17	MODIFY					1/1	A4	mm	1:90	FORM	6320D-XXXRDXPXT0X
A0	2012/07/06	NEW										
REV	DATE	MODIFICATION DESCRIPTION	CHANGE	DIM	TOL	ANGLE	SHEET	SIZE	UNIT	SCALE	FIT	PART NO.

WCON
 Http: www.wcon.com
 WCON-Dongguan WCON-Kunshan
 Tel: +86 769 85358920 Tel: +86 512 57468408
 Fax: +86 769 85358915 Fax: +86 512 57468468
 E-mail: sales@wcon.com E-mail: sales@wcon.com

X-ON Electronics

Largest Supplier of Electrical and Electronic Components

Click to view similar products for [wcon](#) manufacturer:

Other Similar products are found below :

[2185-140SG0AYNT1](#) [1125-1206G0S155C002](#) [2263-205SG0DYNT6](#) [2185-207ZG0CYNT1](#) [2157-140SG0CYNT1](#) [1125-2212G0S280C001](#)
[WF2543-1H03B01](#) [WF2543-1H04B01](#) [1220-1210G0M087P1](#) [WF2543-1H07B01](#) [2185DN1-205SG0CYNT1](#) [3622-S040-027G1R02](#) [2263-222RG0DYNT1](#) [1215-2114G0S076C002](#) [1325-1208G0Z093CT01](#) [1125-2208G0S360C001](#) [2220T-206MS0CUNT2](#) [3622-P040-038G1R02](#)
[WF1501-WM09ER1](#) [1125-1206G0M113CR01](#) [WF2005-2H09W01](#) [6223-09FMNS0B02](#) [6212-26FHS0B01](#) [3220-20SW0BST1](#) [WF2005-WR02ET2](#) [2185DN2-106SG0CYNT1](#) [2185-240SG0AYNT1](#) [2111P-232SG0FYNT4](#) [3111-20MSNBK00R1](#) [1125-2205G0S210C001](#) [2185-208SS0CYNT1](#) [2159-213RG0CUNT1](#) [2263D-204SG0DYNT6](#) [2185-209SS1CYNT2](#) [2211-112MG0CYNR4](#) [2227T-204MG3CUNR1](#) [2185-210SG0CYNR1](#) [6212-26MHS0B01](#) [3610-S020-040G1R01](#) [WF3001-2WR03BA1](#) [WF1001A-WZ06ET1](#) [6321D-040SDS1PNT01](#) [2185-208SSNCYNT1](#) [6320D-040RDS1PNT01](#) [WF2547-2H06B01](#) [2135-207MH3CUNR3](#) [2243-211WG0CUNT2](#) [2185-104ZG0CYNR1](#) [2272-209RG0CUNT1](#) [WF2549-2WS10S0B01](#)