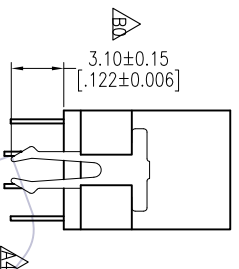
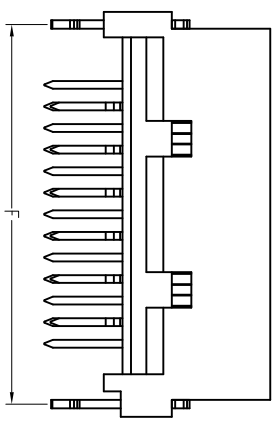
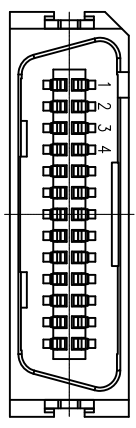




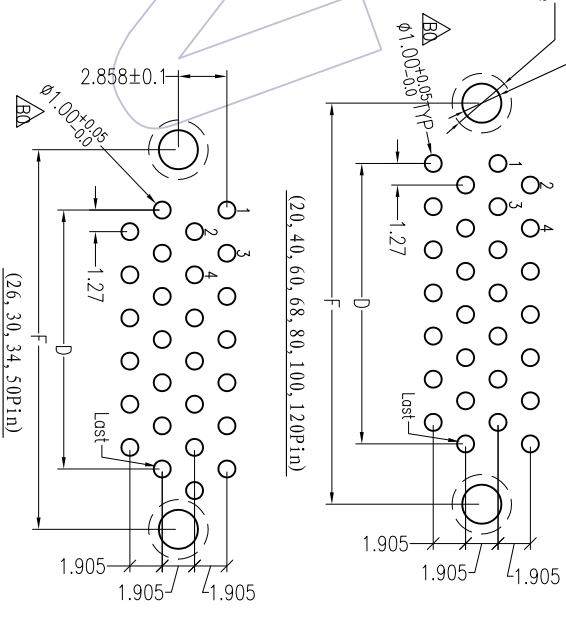
**NOTES:**

Rated Current:0.5AMP  
 Contact Resistance:35mΩ max  
 Withstand Voltage:500V AC/DC  
 Insulation Resistance:500MΩ min  
 Operation Temperature:-40°C to +125°C  
 Contact Material:Phosphor Bronze  
 Contact Plating:Au and Sn Over Ni  
 Insulator Material:PBT+30%G.F UL94V-0



2-φ2.30±0.05Hole  
 φ3.50 Land  
 Soldering Side

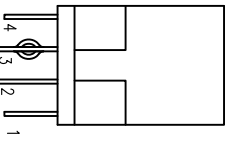
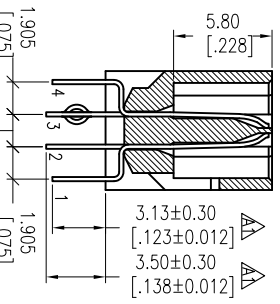
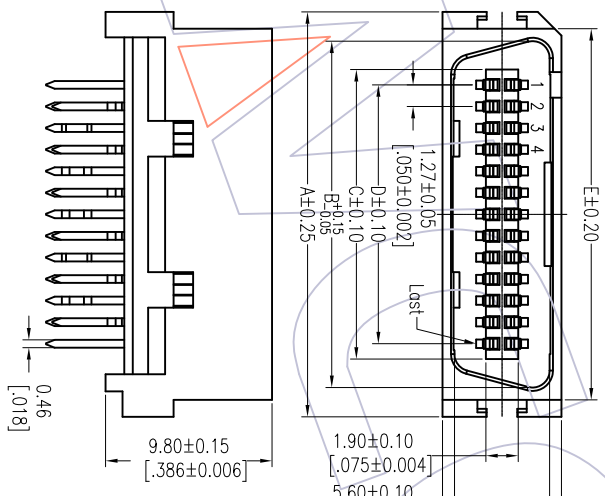
Recommended P.C.B Layout (Top Side)  
 (PCB BOARD TOLERANCE±0.05)



**Ordering Information**

6320D-XXX SD SI PX T 01

No.of Pins Contact Plating Type Packing  
 SI=3u"Gold/Tin N=Without Board Lock Pin T=Tube  
 S2=5u"Gold/Tin W=With Board Lock Pin



No. of Pins	Dimension					
	A	B	C	D	E	F
20	20.03	16.58	13.23	11.43	18.04	18.54
26	23.84	20.39	17.04	15.24	21.85	22.35
30	26.38	22.93	19.58	17.78	24.39	24.89
34	28.92	25.47	22.12	20.32	26.93	27.43
40	32.73	29.28	25.93	24.13	30.74	31.24
50	39.08	35.63	32.28	30.48	37.09	37.59
60	45.43	41.98	38.63	36.83	43.44	43.94
68	50.51	47.06	43.71	41.91	48.52	49.02
80	58.13	54.68	51.33	49.53	56.14	56.64
100	70.83	67.38	64.03	62.23	68.84	69.34
120	83.53	80.08	76.73	74.93	81.54	82.04

B0	2012/04/28	Change PCB Layout Dimension:Add3.10±0.15	OPERATION	±0.40	DRAW	Huang	DATE	2012.04.28	SCALE	FIT	PART NO.	6320D-XXXXSDSXPXT01
A5	2012/02/16	Change Plastic Structure Size	XX	±0.25	CHECK		DATE		UNIT	mm	TITLE:	
A4	2011/12/12	ADD With Board Lock Pin	XXX	±0.15					SIZE	A4	1.27mm SCSI PLUG 180°	
A0	2010/03/27	NEW	XXXX		APPROVE		DATE		SHEET	1/1	Customer NO.	
REV	DATE	MODIFICATION DESCRIPTION	CHANGE	ANGLE	APPROVE		DATE		PROJ.			



WCON-Dongguan  
 Tel: +86 769 85358920  
 Fax: +86 769 85358915  
 E-mail: sales@wcon.com

WCON-Kunshan  
 Tel: +86 512 57468408  
 Fax: +86 512 57468468  
 E-mail: Sales@wcon.com

## X-ON Electronics

Largest Supplier of Electrical and Electronic Components

*Click to view similar products for [wcon](#) manufacturer:*

Other Similar products are found below :

[2185-140SG0AYNT1](#) [1125-1206G0S155C002](#) [2263-205SG0DYNT6](#) [2185-207ZG0CYNT1](#) [2157-140SG0CYNT1](#) [1125-2212G0S280C001](#)  
[WF2543-1H03B01](#) [WF2543-1H04B01](#) [1220-1210G0M087P1](#) [WF2543-1H07B01](#) [2185DN1-205SG0CYNT1](#) [3622-S040-027G1R02](#) [2263-](#)  
[222RG0DYNT1](#) [1215-2114G0S076C002](#) [1325-1208G0Z093CT01](#) [1125-2208G0S360C001](#) [2220T-206MS0CUNT2](#) [3622-P040-038G1R02](#)  
[WF1501-WM09ER1](#) [1125-1206G0M113CR01](#) [WF2005-2H09W01](#) [6223-09FMNS0B02](#) [6212-26FHS0B01](#) [3220-20SW0BST1](#) [WF2005-](#)  
[WR02ET2](#) [2185DN2-106SG0CYNT1](#) [2185-240SG0AYNT1](#) [2111P-232SG0FYNT4](#) [3111-20MSNBK00R1](#) [1125-2205G0S210C001](#) [2185-](#)  
[208SS0CYNT1](#) [2159-213RG0CUNT1](#) [2263D-204SG0DYNT6](#) [2185-209SS1CYNT2](#) [2211-112MG0CYNR4](#) [2227T-204MG3CUNR1](#) [2185-](#)  
[210SG0CYNR1](#) [6212-26MHS0B01](#) [3610-S020-040G1R01](#) [WF3001-2WR03BA1](#) [WF1001A-WZ06ET1](#) [6321D-040SDS1PNT01](#) [2185-](#)  
[208SSNCYNT1](#) [6320D-040RDS1PNT01](#) [WF2547-2H06B01](#) [2135-207MH3CUNR3](#) [2243-211WG0CUNT2](#) [2185-104ZG0CYNR1](#) [2272-](#)  
[209RG0CUNT1](#) [WF2549-2WS10S0B01](#)