

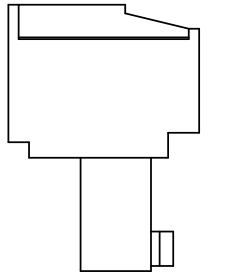
HSF

NOTES:
 Current Rating: 8A
 Voltage Rating: 300V
 Contact Resistance: 8milliohm Max
 Withstand Voltage: AC 1500V
 Insulation Resistance: 1000Megohm Min
 Screw Torque: 2 lbf.in
 Wire range: 16-30AWG
 Operation Temperature: -40°C to +105°C

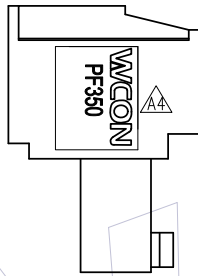
Ordering Information:

P F 350 - C XX A SM N 1 N
 F=Female Pitch 350=3.50 No. of Pins 02-20P
 Contact Plated SM=Matte Tin Blank=W/T WCON Logo N=W/O WCON Logo
 Color A=Green N=Without Two Side Screw
 Type A=Two Side Screw

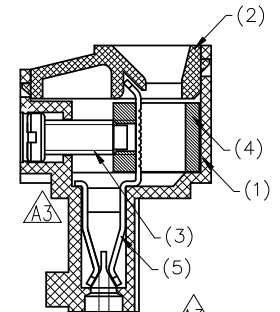
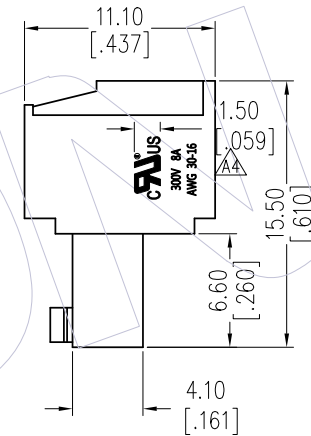
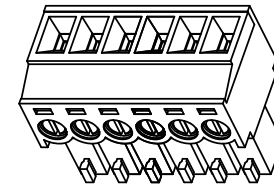
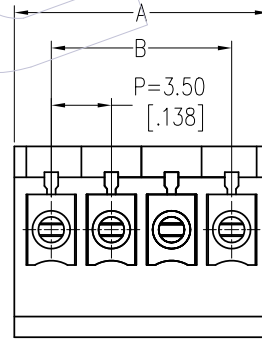
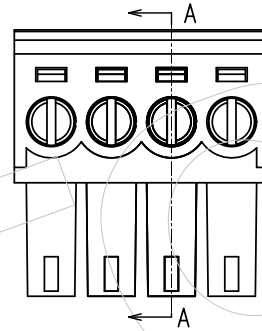
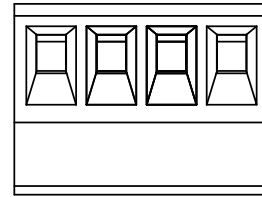
11P	39.30 ±0.30	35.00 ±0.30			
10P	35.80 ±0.30	31.50 ±0.30	20P	70.80 ±0.40	66.50 ±0.40
9P	32.30 ±0.30	28.00 ±0.30	19P	67.30 ±0.40	63.00 ±0.40
8P	28.80 ±0.20	24.50 ±0.20	18P	63.80 ±0.40	59.50 ±0.40
7P	25.30 ±0.20	21.00 ±0.20	17P	60.30 ±0.40	56.00 ±0.40
6P	21.80 ±0.20	17.50 ±0.20	16P	56.80 ±0.40	52.50 ±0.40
5P	18.30 ±0.20	14.00 ±0.20	15P	53.30 ±0.40	49.00 ±0.40
4P	14.80 ±0.20	10.50 ±0.20	14P	49.80 ±0.30	45.50 ±0.30
3P	11.30 ±0.20	7.00 ±0.20	13P	46.30 ±0.30	42.00 ±0.30
2P	7.80 ±0.20	3.50 ±0.10	12P	42.80 ±0.30	38.50 ±0.30
PINS	A	B	PINS	A	B



W/O WCON LOGO



W/T WCON LOGO



SECTION A-A

(5)	Contact	TPT031-PSM001	N	C5191R-H T=0.3mm
(4)	Pin Block	BL020-1BNI01	N	C3604
(3)	Screw	MA020-1SXX01	N	C1018
(2)	Cover	XPC350-XXB1XN1	1	PA66 UL94-V0
(1)	Housing	XPF350-XXB1XN1(N)	1	PA66 UL94-V0
ITEM	TITLE	P/N	Q'TY	Material

A4	2020/07/28	ADD LOGO; ADD W/O LOGO P/N	A4	XSR	OPERATION	DRAW	DATE	SCALE	FIT	PART NO. PF350-CXXASMN1(N)
A3	2018/04/12	Modify terminal ; ADD DIM.	A3	XSR	X.X ±0.40	XSR	2020/07/28	UNIT	mm	
A2	2015/07/15	Modify	A2		X.XX ±0.25	CHECK	DATE	SIZE	A4	
A0	2011/06/07	NEW			X.XXX ±0.15	APPROVE	DATE	SHEET	1/1	
REV	DATE	MODIFICATION DESCRIPTION	CHANGE		Angle ± 3° DIM TOL			PROJ.	Customer NO.	

WCON
 Http: www.wcon.com

WCON-Dongguan
 Tel: +86 769 85358920
 Fax: +86 769 85358915
 E-mail: sales@wcon.com

WCON-Kunshan
 Tel: +86 512 57468408
 Fax: +86 512 57468468
 E-mail: salesks@wcon.com

X-ON Electronics

Largest Supplier of Electrical and Electronic Components

Click to view similar products for [Pluggable Terminal Blocks](#) category:

Click to view products by [Wcon](#) manufacturer:

Other Similar products are found below :

[57.510.0053](#) [MC 1.5/ 6-ST-3.5 GY AU](#) [ET02015000J0G](#) [734-104](#) [734-302](#) [860505](#) [860516](#) [860810](#) [GBPACX-12](#) [93.731.4953.0](#) [PV05-5,08-K](#) [PVP03-3,50](#) [PVP04-3,50](#) [PVS02-5,00](#) [1-1986160-3](#) [1377680000](#) [1531000000](#) [1546228-5](#) [ELFP03110](#) [ELFT07250](#) [ELVD12100](#) [ELVF09400](#) [ELVP03100](#) [ELXH071G0E](#) [1700410](#) [1702246](#) [1705229](#) [1714537](#) [1717806](#) [1719600](#) [1728941](#) [1734692](#) [1734795](#) [1740291](#) [1740628](#) [1746952](#) [1750207](#) [1752865](#) [1754115](#) [1754144](#) [1756913](#) [1760051](#) [1760336](#) [1765111](#) [1776388](#) [1777701](#) [1783410](#) [1800227](#) [1801080](#) [1809474](#)