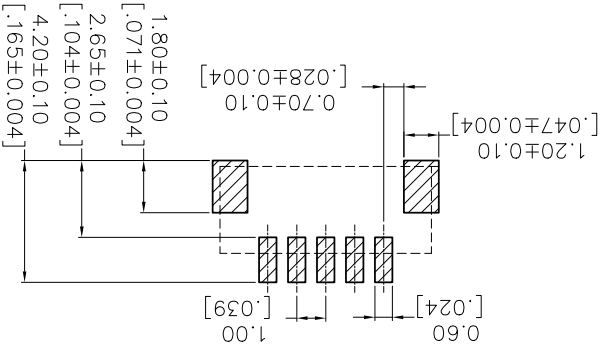
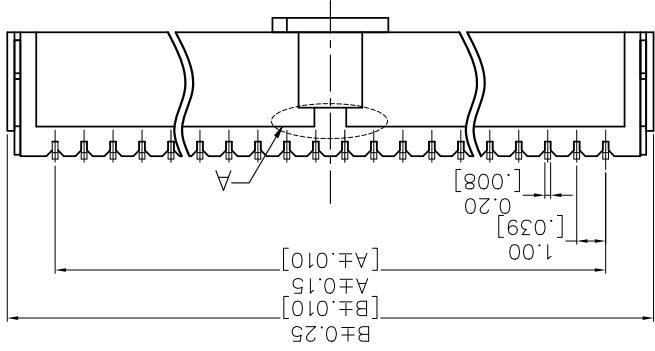


**RECOMMENDED PCB LAYOUT**  
TOLERANCE IS ±0.05



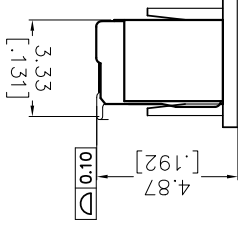
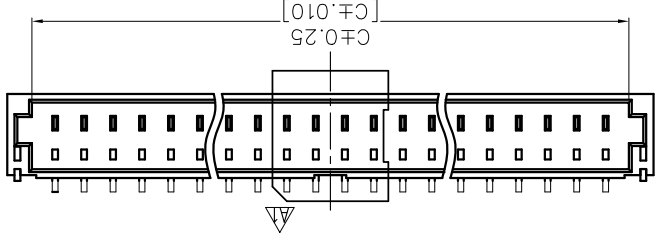
Current Rating: 1.0A AC/DC  
 Contact Resistance: 20milliohm Max  
 Insulation Resistance: 100Megohm Min  
 Withstand Voltage: 250V AC/minute  
 Operation Temperature: -25°C to +75°C  
 Housing Material: PA9T+30%GF(UL94V-0)  
 Contact Material: Copper alloy  
 Contact plating: Sn over Ni Plating  
 02-06Pin without slot "A"



**Ordering Information**

WF1001A-WMXX E R1

No. of Pins: 2P~20P  
 Insulator Color: E=Beige  
 Packing: R=Tape & Reel



REV	DATE	MODIFICATION DESCRIPTION	CHANGE	DIM TOL	APPROVE	DATE	PROJ.	CUSTOMER NO.
A0	2013/12/23	NEW	---	Angle ±.3°	APPROVE	DATE	PROJ.	Customer NO.
A1	2018/11/21	Modify the CAP	---	X.XXX ±0.15	CHECK	DATE	SHEET 1/1	WCON-Dongguan WCON-Kunshan Tel: +86 769 85358920 Fax: +86 512 57468408 E-mail: sales@wcon.com
				X.XX ±0.25	DRAW	DATE	SIZE A4	
				X.X ±0.40	Ding	2018/11/21	UNIT mm	
					SCALE	FIT	TITLE: WF1001A-WMXXERR1	

Part No.	A	B	C
WF1001A-WM02ERR1	1.00	4.30	2.60
WF1001A-WM03ERR1	2.00	5.30	3.60
WF1001A-WM04ERR1	3.00	6.30	4.60
WF1001A-WM05ERR1	4.00	7.30	5.60
WF1001A-WM06ERR1	5.00	8.30	6.60
WF1001A-WM07ERR1	6.00	9.30	7.60
WF1001A-WM08ERR1	7.00	10.30	8.60
WF1001A-WM09ERR1	8.00	11.30	9.60
WF1001A-WM10ERR1	9.00	12.30	10.60
WF1001A-WM11ERR1	10.00	13.30	11.60
WF1001A-WM12ERR1	11.00	14.30	12.60
WF1001A-WM13ERR1	12.00	15.30	13.60
WF1001A-WM14ERR1	13.00	16.30	14.60
WF1001A-WM15ERR1	14.00	17.30	15.60
WF1001A-WM16ERR1	15.00	18.30	16.60
WF1001A-WM17ERR1	16.00	19.30	17.60
WF1001A-WM18ERR1	17.00	20.30	18.60
WF1001A-WM19ERR1	18.00	21.30	19.60
WF1001A-WM20ERR1	19.00	22.30	20.60



WCON-Dongguan  
WCON-Kunshan  
Tel: +86 769 85358920 Fax: +86 512 57468408  
E-mail: sales@wcon.com

Http: www.wcon.com

## X-ON Electronics

Largest Supplier of Electrical and Electronic Components

*Click to view similar products for [Headers & Wire Housings](#) category:*

*Click to view products by [Wcon](#) manufacturer:*

Other Similar products are found below :

[95000-104TRLF](#) [10135584-644402LF](#) [DF62W-EP2022PCA](#) [95000-106TRLF](#) [DF62W-2022SCA](#) [DF62W-EP2022PC](#) [2203348](#) [DF62W-2022SC](#) [1084018](#) [1029039](#) [1084017](#) [802-10-012-10-002000](#) [1112640](#) [1112639](#) [891-007-9SS-BST1T](#) [000-34000](#) [0008550134](#) [0009482033](#) [0009507031](#) [57102-F02-18ULF](#) [57102-S06-03LF](#) [57202-S52-04LF](#) [PCN6-15S-2.5E](#) [0039019024](#) [58102-G61-06LF](#) [582553-1](#) [0009485154](#) [0009508121](#) [0022285053](#) [0050291907](#) [018731A](#) [LY20-4P-DT1-P1E-BR](#) [02.125.8002.8](#) [60101931](#) [60598-1 \(Cut Strip\)](#) [M1625-3R/100](#) [61062-3](#) [61082-181009](#) [CSU011177004](#) [636-1427](#) [638009-1](#) [641938-9](#) [641991-4](#) [644168-1](#) [644827-2](#) [647662-1](#) [65039-019ELF](#) [65692-001LF](#) [65781-018](#) [65781-047](#)