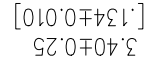
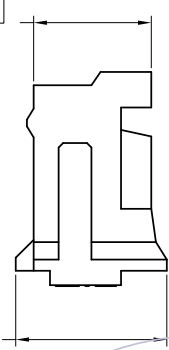
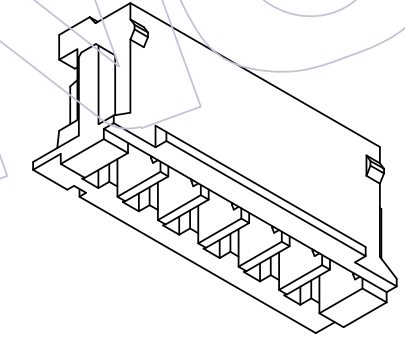
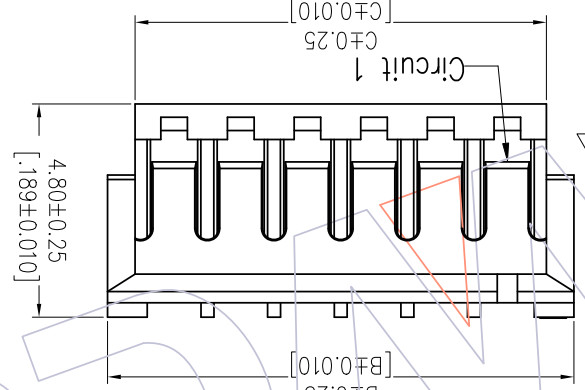
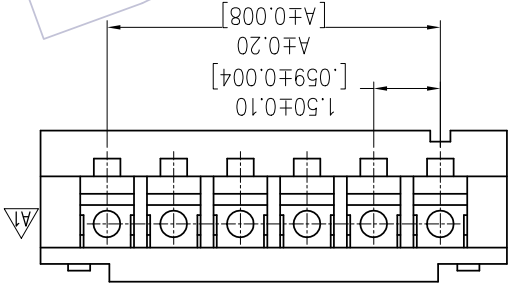


NOTES:  
 Rated Current: 1.0AMP  
 Rated Voltage: 50V AC/DC  
 Contact Resistance: 20mΩ max  
 Withstand Voltage: 500V AC/Minute  
 Insulation Resistance: 500MΩ min  
 Operation Temperature: -25℃ to +85℃  
 Insulator Material: PA66 UL94V-0

## Ordering Information

WF 1501 - H XX X 0 1

No. of pins  
 Color  
 E=Beige  
 W=White



Circuit	Part No.			Q'ty /Bag
	A	B	C	
02	WF1501-H02X01	1.50	4.50	3.30
03	WF1501-H03X01	3.00	6.00	4.80
04	WF1501-H04X01	4.50	7.50	6.30
05	WF1501-H05X01	6.00	9.00	7.80
06	WF1501-H06X01	7.50	10.50	9.30
07	WF1501-H07X01	9.00	12.00	10.80
08	WF1501-H08X01	10.50	13.50	12.30
09	WF1501-H09X01	12.00	15.00	13.80
10	WF1501-H10X01	13.50	16.50	15.30
11	WF1501-H11X01	15.00	18.00	16.80
12	WF1501-H12X01	16.50	19.50	18.30
13	WF1501-H13X01	18.00	21.00	19.80
14	WF1501-H14X01	19.50	22.50	21.30
15	WF1501-H15X01	21.00	24.00	22.80
16	WF1501-H16X01	22.50	25.50	24.30
17	WF1501-H17X01	24.00	27.00	25.80
18	WF1501-H18X01	25.50	28.50	27.30
19	WF1501-H19X01	27.00	30.00	28.80
20	WF1501-H20X01	28.50	31.50	30.30

Specification & Ordering Information:

REV	DATE	MODIFICATION DESCRIPTION	CHANGE	DIM TOL	APPROVE	DATE	PROJ.	Customer NO.	WCON-Dongguan WCON-Kunshan Tel: +86 769 85358920 Fax: +86 769 85358915 E-mail: sdies@wcon.com E-mail: sdiesks@wcon.com
A0	2012/09/03	NEW	---	Angle ± 3°	JYhuang	2014/03/25	ZH 1.50 WAFER HOUSING		
A1	2014/03/25	MODIFY THE VIEW	---	X.XXX ±0.15	CHECK	DATE	SIZE	TITLE:	
			---	X.XX ±0.25	SCALE	DATE	UNIT	SEE TAB	
			---	X.X ±0.40	FIT	DATE	SCALE	PART NO.	



Http: www.wcon.com

A B C D E F G H

10 9 8 7 6 5 4 3 2 1

## X-ON Electronics

Largest Supplier of Electrical and Electronic Components

*Click to view similar products for [Headers & Wire Housings](#) category:*

*Click to view products by [Wcon](#) manufacturer:*

Other Similar products are found below :

[95000-104TRLF](#) [10135584-644402LF](#) [DF62W-EP2022PCA](#) [95000-106TRLF](#) [DF62W-2022SCA](#) [DF62W-EP2022PC](#) [2203348](#) [DF62W-2022SC](#) [1084018](#) [1029039](#) [1084017](#) [802-10-012-10-002000](#) [1112640](#) [1112639](#) [891-007-9SS-BST1T](#) [000-34000](#) [0008550134](#) [0009482033](#) [0009507031](#) [57102-F02-18ULF](#) [57102-S06-03LF](#) [57202-S52-04LF](#) [PCN6-15S-2.5E](#) [0039019024](#) [58102-G61-06LF](#) [582553-1](#) [0009485154](#) [0009508121](#) [0022285053](#) [0050291907](#) [018731A](#) [LY20-4P-DT1-P1E-BR](#) [02.125.8002.8](#) [60101931](#) [60598-1 \(Cut Strip\)](#) [M1625-3R/100](#) [61062-3](#) [61082-181009](#) [CSU011177004](#) [636-1427](#) [638009-1](#) [641938-9](#) [641991-4](#) [644168-1](#) [644827-2](#) [647662-1](#) [65039-019ELF](#) [65692-001LF](#) [65781-018](#) [65781-047](#)