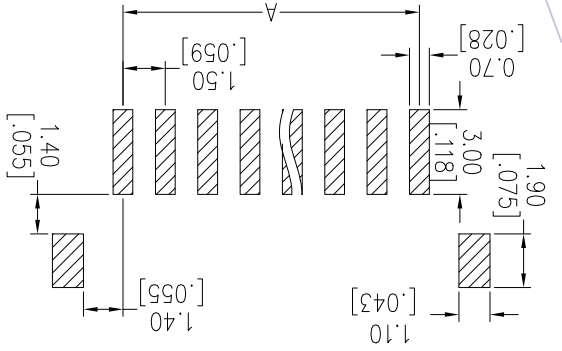
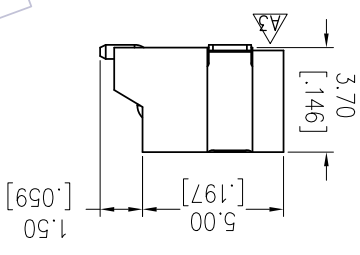
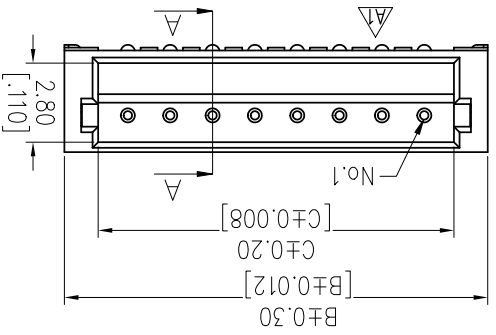


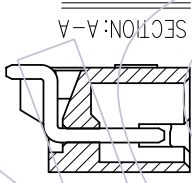
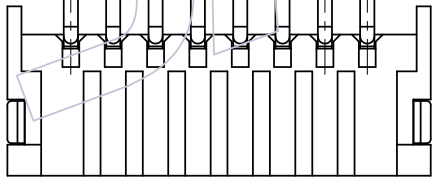
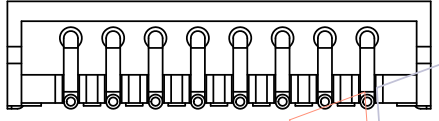
NOTES:
 Rated Current: 1.0AMP
 Rated Voltage: 50V AC/DC
 Contact Resistance: 20mΩ max
 Withstand Voltage: 500V AC/Minute
 Insulation Resistance: 500MΩ min
 Operation Temperature: -25°C to +85°C
 Insulator Material: PA6T+30%G.F UL94V-0



Recommended P.C.B Layout (PCB BOARD TOLERANCE±0.05)

Ordering Information

No.of pins
 02~15P
 S0=Gold Flash/Tin
 S3=10u"Gold/Tin
 S4=15u"Gold/Tin
 S5=30u"Gold/Tin
 G0=Gold Flash
 G3=10u"Gold
 G4=15u"Gold
 G5=30u"Gold
 Blank=Tin
 Color
 R=Black
 E=Beige
 F=Black
 K=Black
 L=Tube
 Packing
 Recel



REV	DATE	MODIFICATION DESCRIPTION	CHANGE	DIM TOL	APPROVE	DATE	PROJ.	CUSTOMER NO.
A0	2012/09/03	NEW	---	Angle ± 3°	APPROVE	DATE	PROJ.	Customer NO.
A1	2013/04/26	PA6T+30%G.F.--PA9T,MODIFY THE DRAWING	---	X.XXX ±0.15	CHECK	DATE	SHEET 1/1	WCON-Dongguan WCON-Kunshan Tel: +86 769 85358920 Fax: +86 769 85358915 E-mail: sdies@wcon.com
A2	2014/11/21	Modify	---	X.XX ±0.25	DRAW	DATE	SIZE A4	WCON-Dongguan WCON-Kunshan Tel: +86 769 85358920 Fax: +86 769 85358915 E-mail: sdies@wcon.com
A3	2019/04/18	Modify	---	X.X ±0.40	OPERATION	DATE	UNIT mm	WCON-Dongguan WCON-Kunshan Tel: +86 769 85358920 Fax: +86 769 85358915 E-mail: sdies@wcon.com
						2019/04/18	SCALE FIT	

Circuit	Part No.	Dimension		
		A	B	C
02	WF1501-WZ02XX1	1.50	6.00	3.60
03	WF1501-WZ03XX1	3.00	7.50	5.10
04	WF1501-WZ04XX1	4.50	9.00	6.60
05	WF1501-WZ05XX1	6.00	10.50	8.10
06	WF1501-WZ06XX1	7.50	12.00	9.60
07	WF1501-WZ07XX1	9.00	13.50	11.10
08	WF1501-WZ08XX1	10.50	15.00	12.60
09	WF1501-WZ09XX1	12.00	16.50	14.10
10	WF1501-WZ10XX1	13.50	18.00	15.60
11	WF1501-WZ11XX1	15.00	19.50	17.10
12	WF1501-WZ12XX1	16.50	21.00	18.60
13	WF1501-WZ13XX1	18.00	22.50	20.10



PRT NO. WF1501-WZXXXXX1
 TITLE: ZH 1.50 WAFER 90° SMT
 WCON-Dongguan
 WCON-Kunshan
 Tel: +86 769 85358920
 Fax: +86 769 85358915
 E-mail: sdies@wcon.com

X-ON Electronics

Largest Supplier of Electrical and Electronic Components

Click to view similar products for [Headers & Wire Housings](#) category:

Click to view products by [Wcon](#) manufacturer:

Other Similar products are found below :

[95000-104TRLF](#) [10135584-644402LF](#) [DF62W-EP2022PCA](#) [95000-106TRLF](#) [DF62W-2022SCA](#) [DF62W-EP2022PC](#) [2203348](#) [DF62W-2022SC](#) [1084018](#) [1029039](#) [1084017](#) [802-10-012-10-002000](#) [1112640](#) [1112639](#) [891-007-9SS-BST1T](#) [000-34000](#) [0008550134](#) [0009482033](#) [0009507031](#) [57102-F02-18ULF](#) [57102-S06-03LF](#) [57202-S52-04LF](#) [PCN6-15S-2.5E](#) [0039019024](#) [58102-G61-06LF](#) [582553-1](#) [0009485154](#) [0009508121](#) [0022285053](#) [0050291907](#) [018731A](#) [LY20-4P-DT1-P1E-BR](#) [02.125.8002.8](#) [60101931](#) [60598-1 \(Cut Strip\)](#) [M1625-3R/100](#) [61062-3](#) [61082-181009](#) [CSU011177004](#) [636-1427](#) [638009-1](#) [641938-9](#) [641991-4](#) [644168-1](#) [644827-2](#) [647662-1](#) [65039-019ELF](#) [65692-001LF](#) [65781-018](#) [65781-047](#)