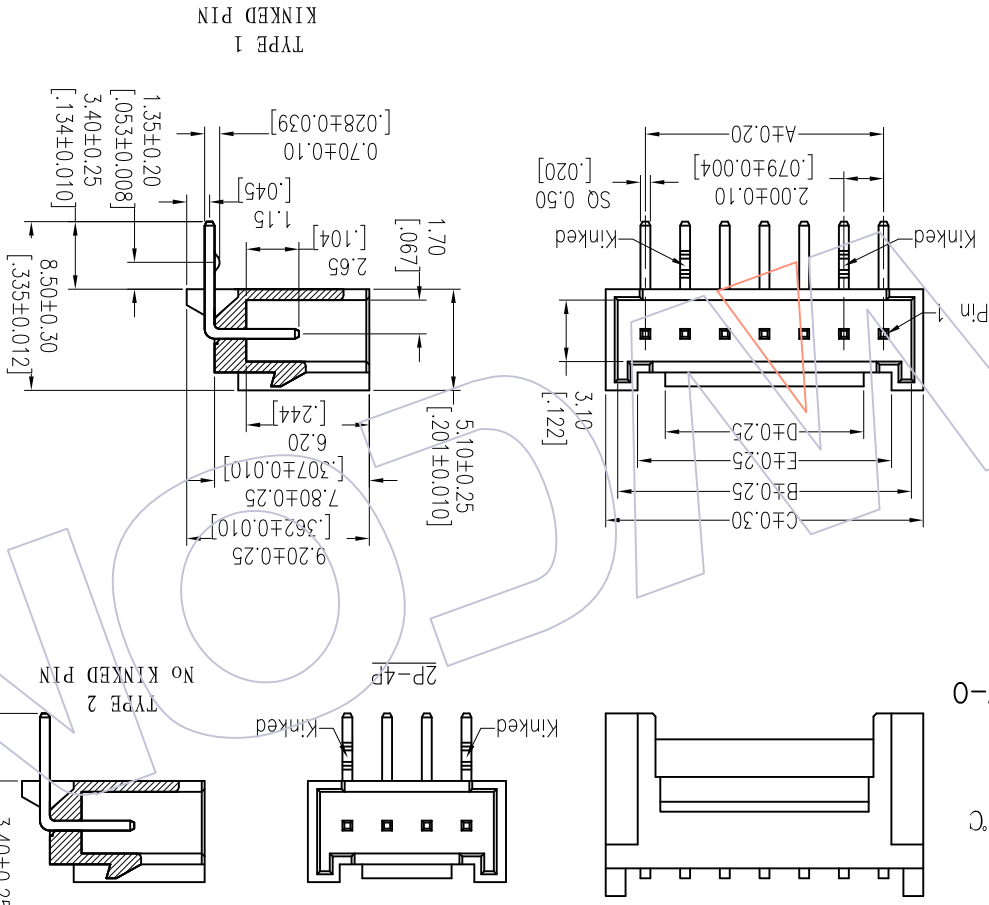


NOTES:
 Rated Current:2.0AMP
 Rated Voltage:125V AC/DC
 Contact Resistance:20mΩ max
 Withstand Voltage:250V AC/DC
 Insulation Resistance:500MΩ min
 Operation Temperature:-25℃ to +85℃
 Contact Material:Brass
 Contact plating:Au Or Sn Over Ni
 Insulator Material:PA6T+30%G.F UL94V-0
 ▲

Ordering Information

WF2005 - WR XX X T X
 No. of pins 02-16P
 SO=Gold Flash/Tin
 S=10u"Gold/Tin
 S=15u"Gold/Tin
 S=30u"Gold/Tin
 G=Gold Flash
 G=10u"Gold
 G=15u"Gold
 G=30u"Gold
 Blank=Tin
 Color B=Black
 E=Beige
 W=White
 T=Type 1
 2=Type 2
 Series No. 1=Type 1
 2=Type 2
 Packing T=Tube



REV	DATE	MODIFICATION DESCRIPTION	CHANGE	DIM TOL	APPROVE	DATE	PROJ.	CUSTOMER NO.	DATE	SCALE	OPERATION
A0	2012/09/05	NEW		± 3°	JY Huang	2014/03/13	1/1	2.00 WAFER 90° DIP	2014/03/13	1/1	
A1	2014/03/13	Modify The Material PA9T--PA6T		X.xxx ±0.15			A4				
				X.xx ±0.25			mm				
				X.X ±0.40			mm				

Circuit	Part No.	Dimension				
		A	B	C	D	E
02	WF2005-WR02XTX	2.0	4.8	6.0	3.2	3.2
03	WF2005-WR03XTX	4.0	6.8	8.0	2.0	4.8
04	WF2005-WR04XTX	6.0	8.8	10.0	4.0	6.8
05	WF2005-WR05XTX	8.0	10.8	12.0	6.0	8.8
06	WF2005-WR06XTX	10.0	12.8	14.0	8.0	10.8
07	WF2005-WR07XTX	12.0	14.8	16.0	10.0	12.8
08	WF2005-WR08XTX	14.0	16.8	18.0	12.0	14.8
09	WF2005-WR09XTX	16.0	18.8	20.0	14.0	16.8
10	WF2005-WR10XTX	18.0	20.8	22.0	16.0	18.8
11	WF2005-WR11XTX	20.0	22.8	24.0	18.0	20.8
12	WF2005-WR12XTX	22.0	24.8	26.0	20.0	22.8
13	WF2005-WR13XTX	24.0	26.8	28.0	22.0	24.8
14	WF2005-WR14XTX	26.0	28.8	30.0	24.0	26.8
15	WF2005-WR15XTX	28.0	30.8	32.0	26.0	28.8
16	WF2005-WR16XTX	30.0	32.8	34.0	28.0	30.8

Specification & Ordering Information:

TYPE 1	WF2005-WRXXX11
TYPE 2	WF2005-WRXXX12

Recommended P.C.B Layout(Top Side)
 (PCB BOARD TOLERANCE±0.05)



PART NO. SBE TAB
 TITLE: 2.00 WAFER 90° DIP

WCON-Dongguan
 WCON-Kunshan
 Http: www.wcon.com
 Tel: +86 769 85358915
 Fax: +86 512 57468468
 E-mail: sales@wcon.com

X-ON Electronics

Largest Supplier of Electrical and Electronic Components

Click to view similar products for [Headers & Wire Housings](#) category:

Click to view products by [Wcon](#) manufacturer:

Other Similar products are found below :

[95000-104TRLF](#) [10135584-644402LF](#) [DF62W-EP2022PCA](#) [95000-106TRLF](#) [DF62W-2022SCA](#) [DF62W-EP2022PC](#) [2203348](#) [DF62W-2022SC](#) [1084018](#) [1029039](#) [1084017](#) [802-10-012-10-002000](#) [1112640](#) [1112639](#) [891-007-9SS-BST1T](#) [000-34000](#) [0008550134](#) [0009482033](#) [0009507031](#) [57102-F02-18ULF](#) [57102-S06-03LF](#) [57202-S52-04LF](#) [PCN6-15S-2.5E](#) [0039019024](#) [58102-G61-06LF](#) [582553-1](#) [0009485154](#) [0009508121](#) [0022285053](#) [0050291907](#) [018731A](#) [LY20-4P-DT1-P1E-BR](#) [02.125.8002.8](#) [60101931](#) [60598-1 \(Cut Strip\)](#) [M1625-3R/100](#) [61062-3](#) [61082-181009](#) [CSU011177004](#) [636-1427](#) [638009-1](#) [641938-9](#) [641991-4](#) [644168-1](#) [644827-2](#) [647662-1](#) [65039-019ELF](#) [65692-001LF](#) [65781-018](#) [65781-047](#)