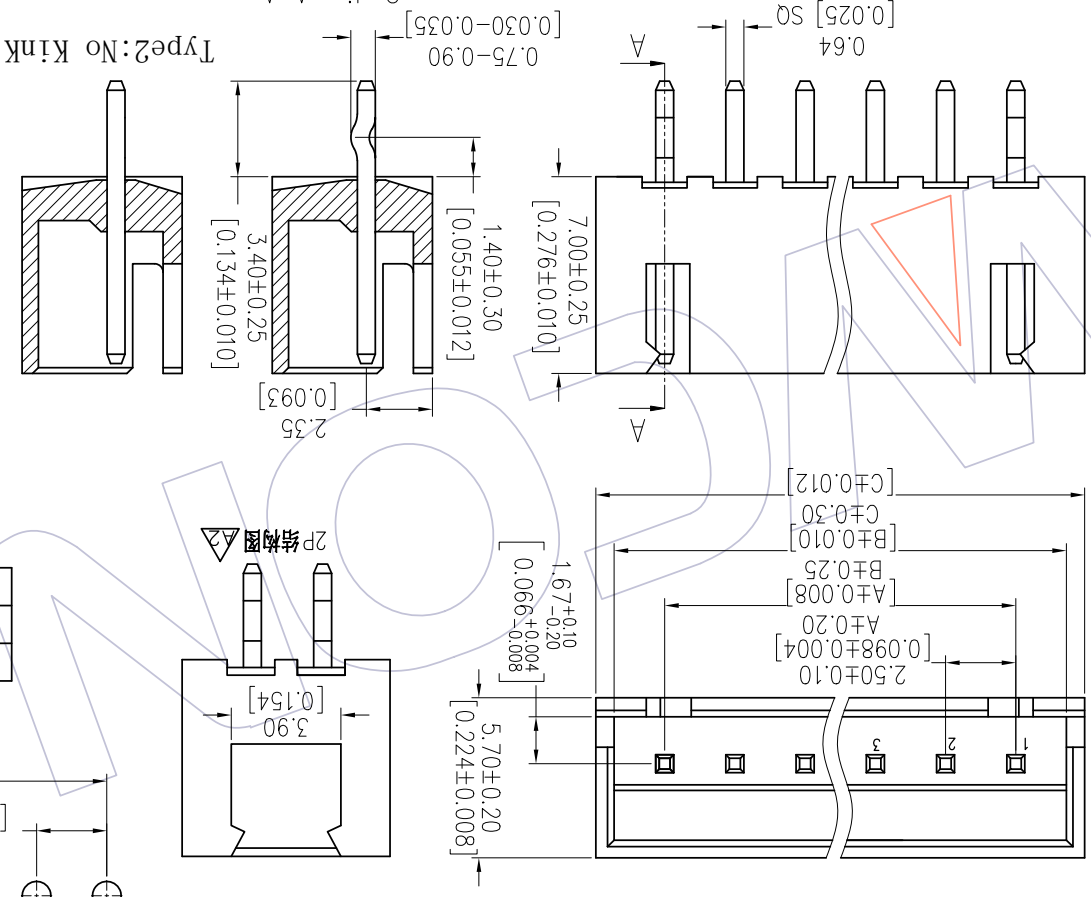
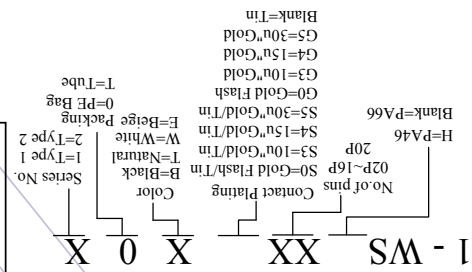


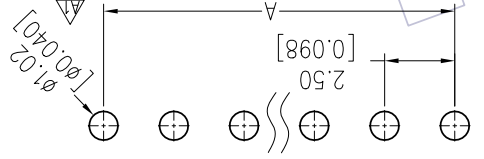
NOTES:

- Rated Current: 3.0AMP
- Rated Voltage: 250V AC/DC
- Contact Resistance: 20mΩ max
- Withstand Voltage: 800V AC/DC
- Insulation Resistance: 100MΩ min
- Operation Temperature: -25℃ to +85℃
- Contact Material: Brass
- Contact plating: Au Or Sn Over Ni
- Insulator Material: PA66 Or PA46 UL94V-0

Ordering Information



Recommended P.C.B Layout(Top Side)
(PCB BOARD TOLERANCE±0.05)



TITLE	PART NO.
TYPE 1	WF2501-WSXXX01
TYPE 2	WF2501-WSXXX02

Specification & Ordering Information:

Circuit	Part No.	Dimension		
		A	B	C
02	WF2501-WS02XX	2.50	6.1	7.4
03	WF2501-WS03XX	5.00	8.6	9.9
04	WF2501-WS04XX	7.50	11.1	12.4
05	WF2501-WS05XX	10.00	13.6	14.9
06	WF2501-WS06XX	12.50	16.1	17.4
07	WF2501-WS07XX	15.00	18.6	19.9
08	WF2501-WS08XX	17.50	21.1	22.4
09	WF2501-WS09XX	20.00	23.6	24.9
10	WF2501-WS10XX	22.50	26.1	27.4
11	WF2501-WS11XX	25.00	28.6	29.9
12	WF2501-WS12XX	27.50	31.1	32.4
13	WF2501-WS13XX	30.00	33.6	34.9
14	WF2501-WS14XX	32.50	36.1	37.4
15	WF2501-WS15XX	35.00	38.6	39.9
16	WF2501-WS16XX	37.50	41.1	42.4
20	WF2501-WS20XX	47.50	51.1	52.4

REV	DATE	MODIFICATION DESCRIPTION	CHANGE	DIM	TOL	OPERATION	DRAW	DATE	SCALE	FIT	PART NO.
A2	2017/02/13	Add 2P DRAW	△	XX	±0.40		Dwg	2017/02/13	mm		WF2501-WSXXX0X
A1	2013/10/24	MODIFY THE PCB HOLE DIM	—	XX	±0.25		CHECK				
A0	2012/09/05	NEW	—	XXX	±0.15		APPROVE				
REV	DATE	MODIFICATION DESCRIPTION	CHANGE	Angle	± 3.		PROJ.	DATE	SHEET	PROJ.	Customer NO.



WCON-Donggoun
WCON-Kunshan
Tel: +86 769 85358920
Tel: +86 769 85358915
Fax: +86 769 85358915
E-mail: sdles@wcon.com
E-mail: sdlesks@wcon.com
Http: www.wcon.com

X-ON Electronics

Largest Supplier of Electrical and Electronic Components

Click to view similar products for [Headers & Wire Housings](#) category:

Click to view products by [Wcon](#) manufacturer:

Other Similar products are found below :

[95000-104TRLF](#) [10135584-644402LF](#) [DF62W-EP2022PCA](#) [95000-106TRLF](#) [DF62W-2022SCA](#) [DF62W-EP2022PC](#) [2203348](#) [DF62W-2022SC](#) [1084018](#) [1029039](#) [1084017](#) [802-10-012-10-002000](#) [1112640](#) [1112639](#) [891-007-9SS-BST1T](#) [000-34000](#) [0008550134](#) [0009482033](#) [0009507031](#) [57102-F02-18ULF](#) [57102-S06-03LF](#) [57202-S52-04LF](#) [PCN6-15S-2.5E](#) [0039019024](#) [58102-G61-06LF](#) [582553-1](#) [0009485154](#) [0009508121](#) [0022285053](#) [0050291907](#) [018731A](#) [LY20-4P-DT1-P1E-BR](#) [02.125.8002.8](#) [60101931](#) [60598-1 \(Cut Strip\)](#) [M1625-3R/100](#) [61062-3](#) [61082-181009](#) [CSU011177004](#) [636-1427](#) [638009-1](#) [641938-9](#) [641991-4](#) [644168-1](#) [644827-2](#) [647662-1](#) [65039-019ELF](#) [65692-001LF](#) [65781-018](#) [65781-047](#)