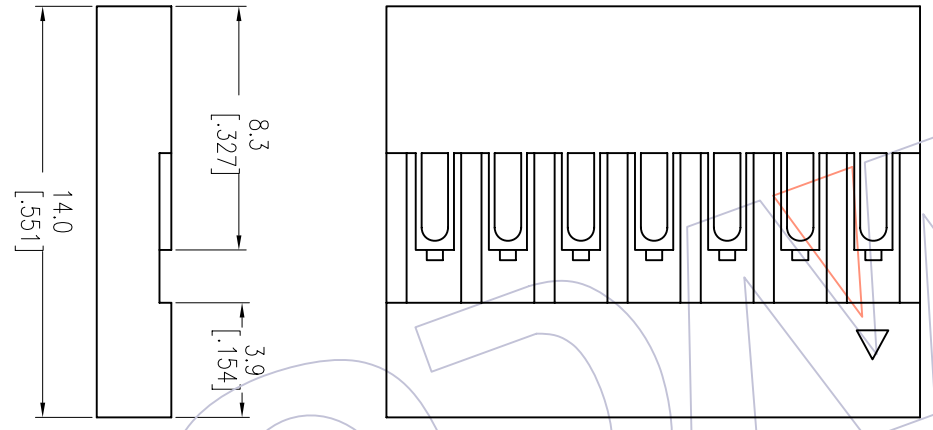
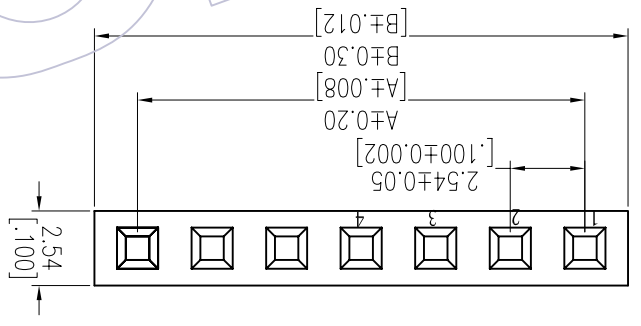


NOTES:
 Rated Current:3.0AMP
 Contact Resistance:20mΩ max
 Withstand Voltage:1000V AC/DC
 Insulation Resistance:1000MΩ min
 Operation Temperature:-25°C to +85°C
 Insulator Material:PB+30%G.F UL94V-0
 Use with:WF2543-T
 Mated with:WF2543-Water

Ordering Information
WF2543-1HXX X 01

No. of pins
 Color
 Packing
 01P-20P W=White 0=PE Bag
 B=Black



Circuit	Part No.	Dimension
1x01	WF2543-1H01X01	2.54
1x02	WF2543-1H02X01	2.54
1x03	WF2543-1H03X01	5.08
1x04	WF2543-H04X01	7.62
1x05	WF2543-1H05X01	10.16
1x06	WF2543-1H06X01	12.70
1x07	WF2543-1H07X01	15.24
1x08	WF2543-1H08X01	17.78
1x09	WF2543-1H09X01	20.32
1x10	WF2543-1H10X01	22.86
1x11	WF2543-1H11X01	25.40
1x12	WF2543-1H12X01	27.94
1x13	WF2543-1H13X01	30.48
1x14	WF2543-1H14X01	33.02
1x15	WF2543-1H15X01	35.56
1x16	WF2543-1H16X01	38.10
1x17	WF2543-1H17X01	40.64
1x18	WF2543-1H18X01	43.18
1x19	WF2543-1H19X01	45.72
1x20	WF2543-1H20X01	48.26
1x20	WF2543-1H20X01	50.80

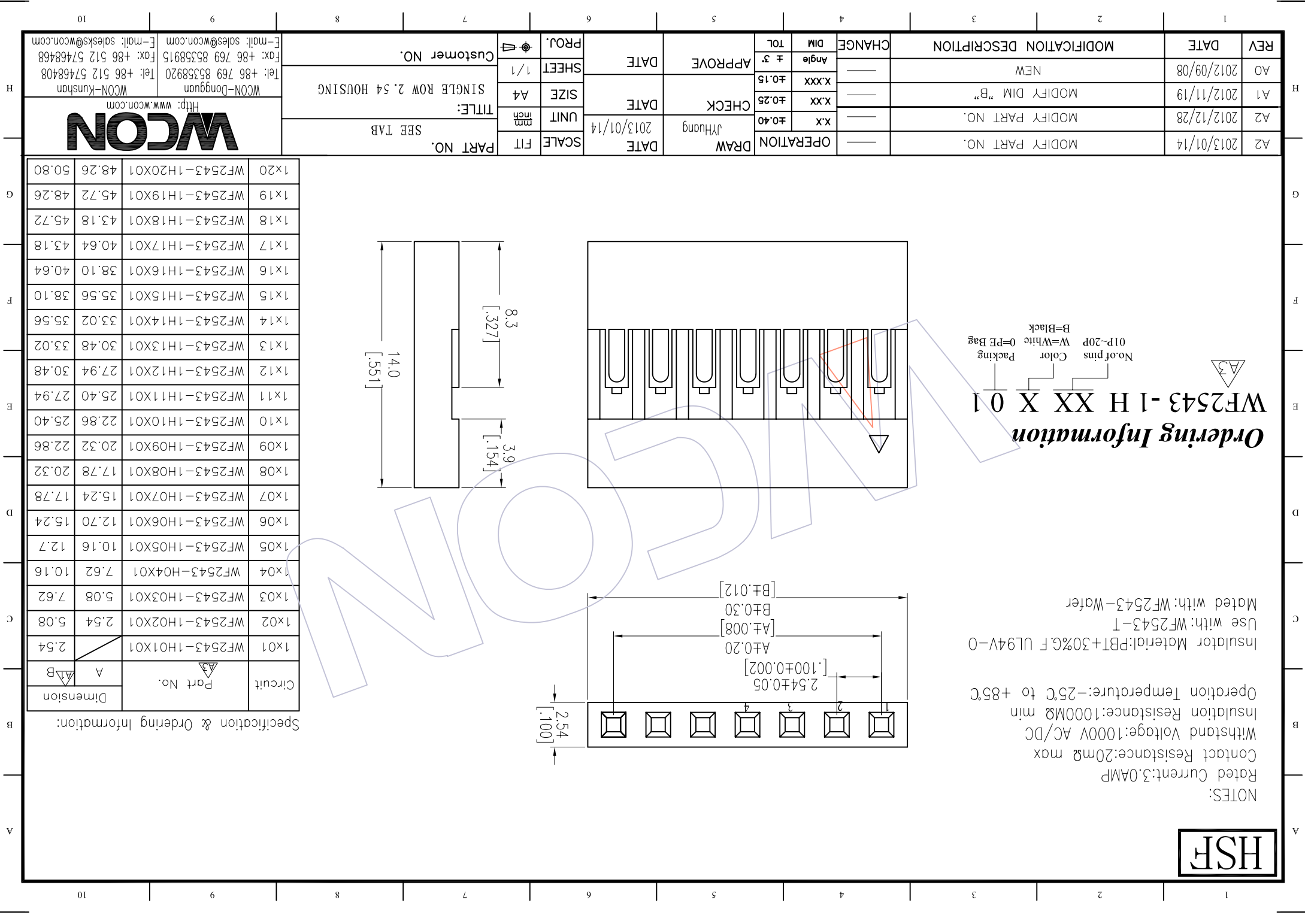
Specification & Ordering Information:

REV	DATE	MODIFICATION DESCRIPTION	CHANGE	DIM TOL	APPROVE	DATE	PROJ.	CUSTOMER NO.	CONTACT INFO
A2	2013/01/14	MODIFY PART NO.	—	OPERATION	DRAW	2013/01/14	JHuang	WCON-Kunshan	Tel: +86 769 85358920
A2	2012/12/28	MODIFY PART NO.	—	±0.40	CHECK	2013/01/14	JHuang	WCON-Dongguan	Tel: +86 769 85358920
A1	2012/11/19	MODIFY DIM "B"	—	X.XX ±0.25	APPROVE	DATE	PROJ.	SINGLE ROW 2.54 HOUSING	Fax: +86 769 85358915
A0	2012/09/08	NEW	—	X.XXX ±0.15	APPROVE	DATE	PROJ.	Customer NO.	Fax: +86 512 57468468
				Angle					E-mail: sales@wcon.com
				± 3					E-mail: sales@wcon.com



PART NO. SBE TAB

WCON-Kunshan
 WCON-Dongguan
 Http: www.wcon.com



X-ON Electronics

Largest Supplier of Electrical and Electronic Components

Click to view similar products for [Headers & Wire Housings](#) category:

Click to view products by [Wcon](#) manufacturer:

Other Similar products are found below :

[95000-104TRLF](#) [10135584-644402LF](#) [DF62W-EP2022PCA](#) [95000-106TRLF](#) [DF62W-2022SCA](#) [DF62W-EP2022PC](#) [2203348](#) [DF62W-2022SC](#) [1084018](#) [1029039](#) [1084017](#) [802-10-012-10-002000](#) [1112640](#) [1112639](#) [891-007-9SS-BST1T](#) [000-34000](#) [0008550134](#) [0009482033](#) [0009507031](#) [57102-F02-18ULF](#) [57102-S06-03LF](#) [57202-S52-04LF](#) [PCN6-15S-2.5E](#) [0039019024](#) [58102-G61-06LF](#) [582553-1](#) [0009485154](#) [0009508121](#) [0022285053](#) [0050291907](#) [018731A](#) [LY20-4P-DT1-P1E-BR](#) [02.125.8002.8](#) [60101931](#) [60598-1 \(Cut Strip\)](#) [M1625-3R/100](#) [61062-3](#) [61082-181009](#) [CSU011177004](#) [636-1427](#) [638009-1](#) [641938-9](#) [641991-4](#) [644168-1](#) [644827-2](#) [647662-1](#) [65039-019ELF](#) [65692-001LF](#) [65781-018](#) [65781-047](#)