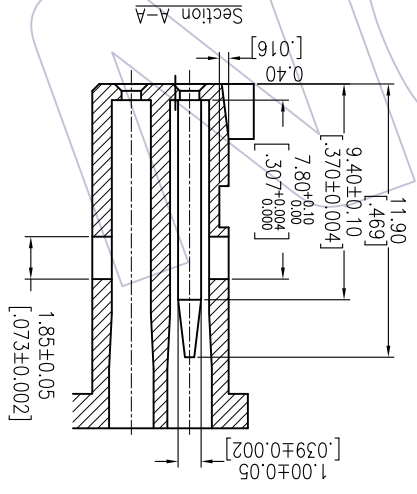
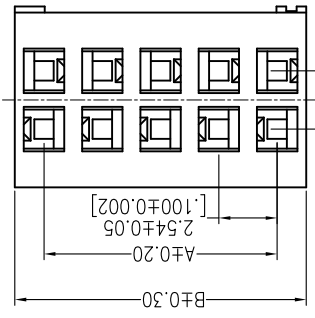
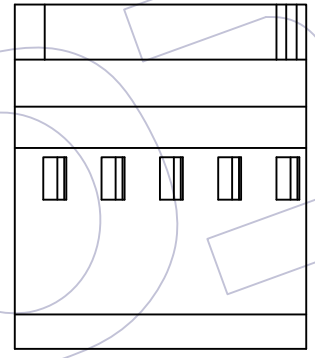
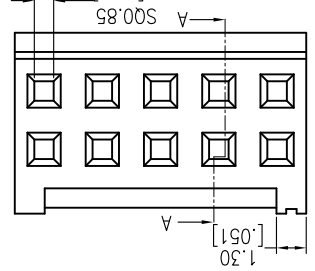
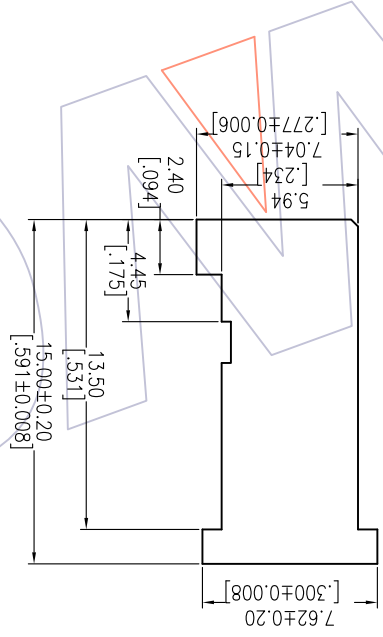


NOTES:
 Rated Current:3.0A max
 Contact Resistance:20mΩ max
 Withstand Voltage:1000V AC/Minute
 Insulation Resistance:1000MΩ min
 Operation Temperature:-25℃ to+85℃
 Insulator Material:PT+30%G.F UL94V-0
 Used with:WF2547-T
 Mated with:WF2547-Water

Ordering Information
 WF2547-2HXX X 0 1

No. of pins
 02P~20P
 Color
 E=Beige
 W=White
 B=Black
 U=Blue
 Packing
 0=PE Bag



Dimension	Part No.	Circuit
A	WF2547-2H02X01	2x02
B	WF2547-2H03X01	2x03
	WF2547-2H04X01	2x04
	WF2547-2H05X01	2x05
	WF2547-2H06X01	2x06
	WF2547-2H07X01	2x07
	WF2547-2H08X01	2x08
	WF2547-2H09X01	2x09
	WF2547-2H10X01	2x10
	WF2547-2H12X01	2x12
	WF2547-2H15X01	2x15
	WF2547-2H18X01	2x18
	WF2547-2H20X01	2x20

Dimensional & Ordering Information:

REV	DATE	MODIFICATION DESCRIPTION	CHANGE	DIM TOL	APPROVE	DATE	PROJ.	CUSTOMER NO.
A0	2012/09/28	NEW	---	Angle ± 3	APPROVE	DATE	SHEET 1/1	Customer NO.
A1	2013/11/14	Add 2X02P Information	---	X.XXX ±0.15	CHECK	DATE	SIZE A4	2.54 Housing Dual Row "T" Type
				X.XX ±0.25	DRAW	DATE	UNIT mm	WCON-Dongnan Tel: +86 769 85358920 Fax: +86 769 85358915 E-mail: sdles@wcon.com
				X.X ±0.40	JY Huang	2013/11/14	SCALE FT	WCON-Kunshan Tel: +86 512 57468408 Fax: +86 512 57468468 E-mail: sdlesks@wcon.com



PART NO. SEE TAB

TITLE: WCON-Dongnan
 Http://www.wcon.com

X-ON Electronics

Largest Supplier of Electrical and Electronic Components

Click to view similar products for [Headers & Wire Housings](#) category:

Click to view products by [Wcon](#) manufacturer:

Other Similar products are found below :

[95000-104TRLF](#) [10135584-644402LF](#) [DF62W-EP2022PCA](#) [95000-106TRLF](#) [DF62W-2022SCA](#) [DF62W-EP2022PC](#) [2203348](#) [DF62W-2022SC](#) [1084018](#) [1029039](#) [1084017](#) [802-10-012-10-002000](#) [1112640](#) [1112639](#) [891-007-9SS-BST1T](#) [000-34000](#) [0008550134](#) [0009482033](#) [0009507031](#) [57102-F02-18ULF](#) [57102-S06-03LF](#) [57202-S52-04LF](#) [PCN6-15S-2.5E](#) [0039019024](#) [58102-G61-06LF](#) [582553-1](#) [0009485154](#) [0009508121](#) [0022285053](#) [0050291907](#) [018731A](#) [LY20-4P-DT1-P1E-BR](#) [02.125.8002.8](#) [60101931](#) [60598-1 \(Cut Strip\)](#) [M1625-3R/100](#) [61062-3](#) [61082-181009](#) [CSU011177004](#) [636-1427](#) [638009-1](#) [641938-9](#) [641991-4](#) [644168-1](#) [644827-2](#) [647662-1](#) [65039-019ELF](#) [65692-001LF](#) [65781-018](#) [65781-047](#)