

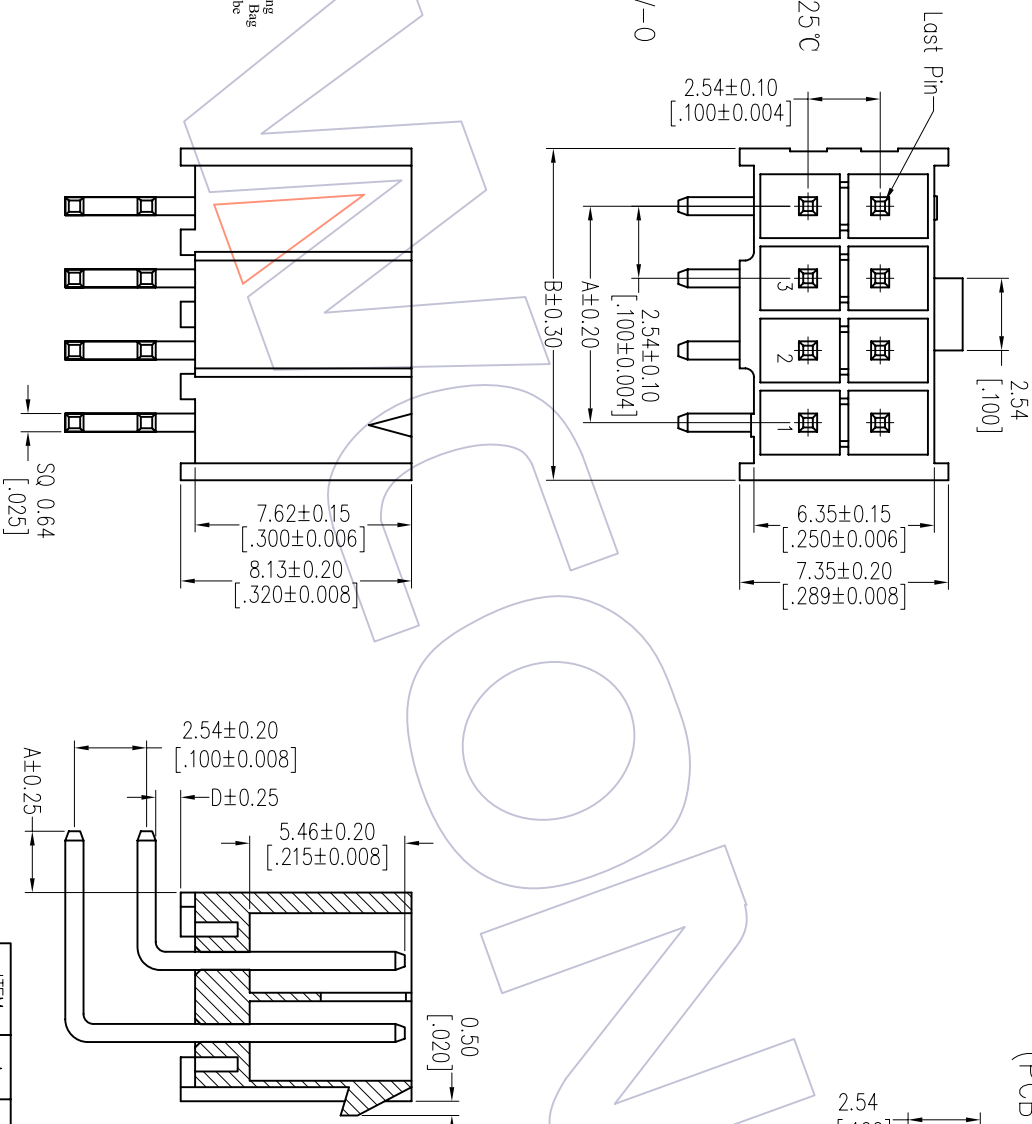
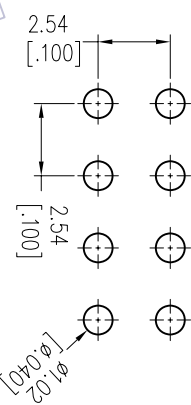
# HSP

**NOTES:**

Rated Current: 3.0AMP  
 Contact Resistance: 20mΩ max  
 Withstand Voltage: 1000V AC/DC  
 Insulation Resistance: 1000MΩ min  
 Operation Temperature: -55°C to +125°C

Contact Material: Brass  
 Contact Plating: Au or Sn Over Ni  
 Insulator Material: LCP + 30%G.F UL94V-0

Recommended P.C.B Layout (Top Side)  
 (PCB BOARD TOLERANCE ±0.05)



**Specification & Ordering Information:**

| Circuit | Part No.        | Dimension |       |
|---------|-----------------|-----------|-------|
|         |                 | A         | B     |
| 2x02    | WF2549-2WR02X01 | 2.54      | 6.60  |
| 2x03    | WF2549-2WR03X01 | 5.08      | 9.14  |
| 2x04    | WF2549-2WR04X01 | 7.62      | 11.68 |
| 2x05    | WF2549-2WR05X01 | 10.16     | 14.22 |
| 2x06    | WF2549-2WR06X01 | 12.70     | 16.76 |
| 2x07    | WF2549-2WR07X01 | 15.24     | 19.30 |
| 2x08    | WF2549-2WR08X01 | 17.78     | 21.84 |
| 2x09    | WF2549-2WR09X01 | 20.32     | 24.38 |
| 2x10    | WF2549-2WR10X01 | 22.86     | 26.92 |
| 2x11    | WF2549-2WR11X01 | 25.40     | 29.46 |
| 2x12    | WF2549-2WR12X01 | 27.94     | 32.00 |
| 2x13    | WF2549-2WR13X01 | 30.48     | 34.54 |
| 2x14    | WF2549-2WR14X01 | 33.02     | 37.08 |
| 2x15    | WF2549-2WR15X01 | 35.56     | 39.62 |
| 2x16    | WF2549-2WR16X01 | 38.10     | 42.16 |
| 2x17    | WF2549-2WR17X01 | 40.64     | 44.70 |
| 2x18    | WF2549-2WR18X01 | 43.18     | 47.24 |
| 2x19    | WF2549-2WR19X01 | 45.72     | 49.78 |
| 2x20    | WF2549-2WR20X01 | 48.26     | 52.32 |
| 2x21    | WF2549-2WR21X01 | 50.80     | 54.86 |
| 2x22    | WF2549-2WR22X01 | 53.34     | 57.40 |
| 2x23    | WF2549-2WR23X01 | 55.88     | 59.94 |
| 2x24    | WF2549-2WR24X01 | 58.42     | 62.48 |
| 2x25    | WF2549-2WR25X01 | 60.96     | 65.02 |

## Ordering Information

WF2549-2WR XX X 0 1



| ITEM      | A    | D    |
|-----------|------|------|
| Standard  | 2.16 | 0.88 |
| Alternate |      |      |

| REV | DATE       | MODIFICATION DESCRIPTION | CHANGE | OPERATION |       | DRAW    |      | SCALE |     | PART NO.                    |  |
|-----|------------|--------------------------|--------|-----------|-------|---------|------|-------|-----|-----------------------------|--|
|     |            |                          |        | XX        | ±0.40 | JYHuang | DATE | UNIT  | FIT | SEE TAB                     |  |
| AO  | 2012/09/10 | NEW                      |        | X.XX      | ±0.25 | CHECK   | DATE | A4    | 1/1 | TITLE: 2.54mm WAFER 90° DIP |  |
|     |            |                          |        | X.XXX     | ±0.15 |         |      |       |     | Customer NO.                |  |
|     |            |                          |        | Angle     | ± 3°  | APPROVE | DATE |       |     |                             |  |
|     |            |                          |        | DIM       | TOL   |         |      |       |     |                             |  |

# WCON

Http: www.wcon.com

WCON-Dongguan Tel: +86 769 85358920 Fax: +86 769 85358915 E-mail: sales@wcon.com  
 WCON-Kunshan Tel: +86 512 57468408 Fax: +86 512 57468468 E-mail: sales@wcon.com

## X-ON Electronics

Largest Supplier of Electrical and Electronic Components

*Click to view similar products for [Pluggable Terminal Blocks](#) category:*

*Click to view products by [Wcon](#) manufacturer:*

Other Similar products are found below :

[57.404.7553](#) [57.504.0053.7](#) [57.510.0053](#) [57.910.6153](#) [01.112.1453](#) [CTB932VE/6](#) [MC 1.5/ 6-ST-3.5 GY AU](#) [ET02015000J0G](#) [734-104](#) [734-302](#) [734-304](#) [8-141-P](#) [FKCT 2.5/ 3-ST KMGY](#) [860505](#) [860508](#) [860516](#) [860810](#) [861908](#) [GBPACX-12](#) [93.731.4953.0](#) [PV05-5,08-K](#) [PVP02-5,00](#) [PVP04-3,50](#) [PVS02-5,00](#) [1-1986160-3](#) [H-10](#) [1546228-5](#) [ELFH09150](#) [ELFH16150](#) [ELFP03110](#) [ELFT06250](#) [ELFT07250](#) [ELVF09400](#) [ELVP03100](#) [ELXH03100](#) [ELXH071G0E](#) [ELXP041G0](#) [ELXT046G0](#) [1700101](#) [1700410](#) [1700425](#) [1703176](#) [1705229](#) [1710175](#) [1714537](#) [1717806](#) [1719600](#) [1729386](#) [1734692](#) [1734795](#)