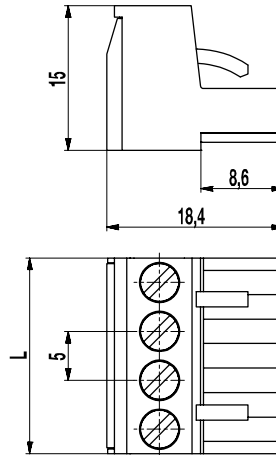
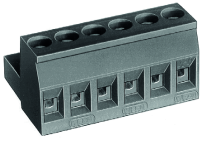


# 120-A-111

Plug connector  
Screw connection



## GENERAL INFORMATION

|              |                                |
|--------------|--------------------------------|
| Pitch        | 5 mm                           |
| No. of poles | 2 - 24                         |
| Usable with  | all pin strips of series 120-M |

## TECHNICAL DATA

|                          |   |       |       |
|--------------------------|---|-------|-------|
| Clamping Range           | <i>solid / stranded / AWG</i>                                     |       |       |
|                          | 0,2 - 4 mm <sup>2</sup> / 0,2 - 2,5 mm <sup>2</sup> / 26 - 12 AWG |       |       |
| Rated Cross Section      | 2,5 mm <sup>2</sup>   |       |       |
| Wire Stripping Length    | 7 mm ± 0,5 mm   |       |       |
| Overvoltage Category     | III   | III   | II    |
| Pollution Severity Level | 3   | 2     | 2     |
| Rated Voltage            | 250 V   | 320 V | 630 V |
| Rated Impulse Voltage    | 4 kV  | 4 kV  | 4 kV  |
| Rated Insulation Voltage | 250 V acc. to EN 60998-1  |       |       |
| Rated Current            | 12 A  |       |       |
| Torque                   | 0,5 Nm  |       |       |

## APPROVALS

|  | Current [A] | Voltage [V] | Group | AWG     | [Nm] |
|--|-------------|-------------|-------|---------|------|
|  | 15          | 300         | B     | 26 - 12 | 0,51 |
|  | 10          | 300         | D     | 26 - 12 | 0,51 |
|  | 15          | 300         | B     | 26 - 12 | 0,51 |
|  | 10          | 300         | D, E  | 26 - 12 | 0,51 |
|  |             |             |       |         |      |

## CONFIGURATIONS

| Poles | Part number  | Article number | Length (L) | Packaging | PU  |
|-------|--------------|----------------|------------|-----------|-----|
| 2     | 120-A-111/02 | 10.808.002     | 10,00 mm   | Box       | 200 |
| 3     | 120-A-111/03 | 10.808.003     | 15,00 mm   | Box       | 200 |
| 4     | 120-A-111/04 | 10.808.004     | 20,00 mm   | Box       | 100 |
| 5     | 120-A-111/05 | 10.808.005     | 25,00 mm   | Box       | 100 |
| 6     | 120-A-111/06 | 10.808.006     | 30,00 mm   | Box       | 100 |

## MATERIAL

|                            |  |
|----------------------------|--|
| Moulding                   | PA, grey, V-0                          |
| Comparative Tracking Index | CTI ≥ 600                              |
| Insulating Group           | I                                      |
| Temperature Range          | -40°C up to 100°C                      |
| Terminal body              | Nickel plated brass                    |
| Pressure clamp             | Tin plated tin bronze                  |
| Screw                      | M3; zinc plated steel, blue passivated |
| Spring                     | Tin plated tin bronze                  |

## OPTIONS / ACCESSORIES

- Consecutive numbering
- Special marking according to drawing
- Self-adhesive marking strip BST-5,00
- Pitch of 10 mm for larger clearance and creepage distances
- Coding elements 120-K
- Connectors equipped with coding elements on request
- Version with extended wire entrance
- Strain relief



## X-ON Electronics

Largest Supplier of Electrical and Electronic Components

*Click to view similar products for [Weco manufacturer](#):*

Other Similar products are found below :

[110-A-111/02](#) [110-A-111/03](#) [110-A-111/04](#) [110-A-111/05](#) [110-A-111/06](#) [110-A-111/08-BA](#) [110-M-111/02](#) [110-M-111/05](#) [110-M-111/06](#)  
[110-M-121/02](#) [110-M-121/06](#) [110-M-211/02](#) [110-M-211/03](#) [110-M-211/04](#) [110-M-211/05](#) [110-M-211/06](#) [110-M-211-SMD/02-MAG](#) [110-M-211-SMD/03-MAG](#) [110-M-211-SMD/04-MAG](#) [110-M-221/02](#) [110-M-221/03](#) [110-M-221/04](#) [110-M-221/05](#) [110-M-221/06](#) [110-P-111/16](#)  
[120-A-111/02-K](#) [120-A-111/03](#) [120-A-111/04](#) [120-A-111/05](#) [120-A-111/06](#) [120-A-111/10-333](#) [120-D-111/08](#) [120-D-121/06](#) [120-M-211/02](#)  
[120-M-211/02-K](#) [120-M-211/03](#) [120-M-221/02](#) [120-M-221/03](#) [120-M-221/04](#) [120-M-221/06](#) [120-M-222/06](#) [120-M-222/08](#) [120-M-222/10](#)  
[121-A-111/02](#) [121-A-111/03](#) [121-A-111/04](#) [121-A-111/05](#) [121-A-111/06](#) [121-D-121/05](#) [121-M-111 /02](#)