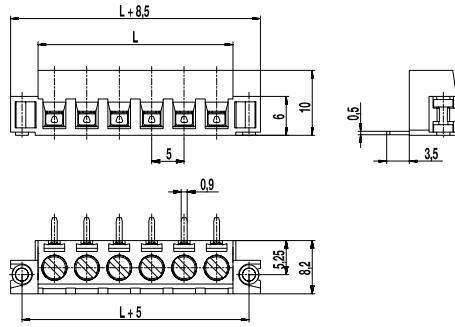
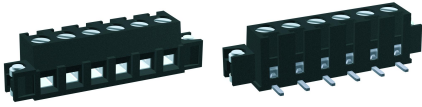
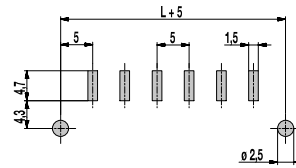


# 140-A-126-SMD

PCB connector for SMD  
Screw connection, with solder flanges



### PCB LAYOUT



Solder paste thickness:  
0,2 mm

### GENERAL INFORMATION

Pitch	5 mm
No. of poles	2 - 8
Areas of application	Systems for measurement and control

### TECHNICAL DATA

Clamping Range	solid / stranded / AWG 0,14 - 2,5 mm <sup>2</sup> / 0,14 - 1,5 mm <sup>2</sup> / 26 - 16 AWG		
Rated Cross Section	1,5 mm <sup>2</sup>		
Wire Stripping Length	6 mm ± 0,5 mm		
Overvoltage Category	III	III	II
Pollution Severity Level	3	2	2
Rated Voltage	200 V	320 V	500 V
Rated Impulse Voltage	4 kV	4 kV	4 kV
Rated Insulation Voltage	250 V acc. to EN 60998-1		
Rated Current	16 A		
Soldering process	Reflow solder		
Torque	0,5 Nm		

### APPROVALS

	Current [A]	Voltage [V]	Group	AWG	[Nm]
	10 [1]	300	B, D	30 - 14	0,51
	15	300	B	30 - 14	0,51

### MATERIAL

Moulding	PA HT, black, V-0
Comparative Tracking Index	CTI ≥ 600
Insulating Group	I
Temperature Range	-40°C up to 120°C; reflow solder temperature peak max. 255°C acc. to DIN EN 61760-1
Terminal body	Nickel plated brass
Pressure clamp	Tin plated tin bronze
Screw	M3; zinc plated steel, blue passivated
Solder pin	0,9 x 0,5 mm; tin plated tin bronze
Solder cylinder	Tin plated brass

### OPTIONS / ACCESSORIES

- Consecutive numbering
- Special marking according to drawing
- Self-adhesive marking strip BST-5,00 [2]

[1] 20 A max for factory-wiring applications only  
[2] To be fitted after reflow soldering process

### CONFIGURATIONS

Poles	Part number	Article number	Length (L)	Packaging	PU	Tape Width	Tape Height
2	140-A-126-SMD/02	20.801.632	10,00 mm	Box	784		
3	140-A-126-SMD/03	20.801.633	15,00 mm	Box	616		
4	140-A-126-SMD/04	20.801.634	20,00 mm	Box	504		
5	140-A-126-SMD/05	20.801.635	25,00 mm	Box	420		
6	140-A-126-SMD/06	20.801.636	30,00 mm	Box	364		
2	140-A-126-SMD/02-T&R	20.801.632.A00	10,00 mm	Tape-on-Reel	375	32 mm	13 mm
3	140-A-126-SMD/03-T&R	20.801.633.A00	15,00 mm	Tape-on-Reel	375	56 mm	13 mm
4	140-A-126-SMD/04-T&R	20.801.634.A00	20,00 mm	Tape-on-Reel	375	56 mm	13 mm
5	140-A-126-SMD/05-T&R	20.801.635.A00	25,00 mm	Tape-on-Reel	375	56 mm	13 mm
6	140-A-126-SMD/06-T&R	20.801.636.A00	30,00 mm	Tape-on-Reel	375	56 mm	13 mm

further number of poles on request



## X-ON Electronics

Largest Supplier of Electrical and Electronic Components

*Click to view similar products for [Fixed Terminal Blocks](#) category:*

*Click to view products by [Weco](#) manufacturer:*

Other Similar products are found below :

[MBE-1512](#) [MBE-1520](#) [MBE-154](#) [MBE-156](#) [MBES-156](#) [MH-2512](#) [MHE-132](#) [MHE-163](#) [MI-254 \(35\)](#) [MPT-275](#) [ELM10110G](#) [BA311TU](#)  
[BA411SU](#) [MV-254-D](#) [MV-255](#) [MV-493](#) [MVE-252](#) [MVE-253](#) [MVEB-153](#) [1705142](#) [1-796689-8](#) [1841320000](#) [S451](#) [29.007](#) [29.116](#) [30.204](#)  
[30.503](#) [30.756](#) [30.853](#) [9872-0-00-15-00-00-33-0](#) [996750](#) [1710052](#) [20020316-G071B01LF](#) [20020327-C061B01LF](#) [29590](#) [30.652](#) [30.710](#)  
[30.754](#) [30.757](#) [32.058](#) [37.206](#) [37.208](#) [37.507](#) [37.558](#) [38331-5812](#) [38331-8018](#) [38540-1910](#) [39.002](#) [MBE-1517](#) [MBE-153](#)