

4010-B / 4011-B

Socket terminal blocks with mounting holes



GENERAL INFORMATION

No. of poles	2 + 3
Additional Information	4010-B: one mounting hole 4011-B: two mounting holes

TECHNICAL DATA

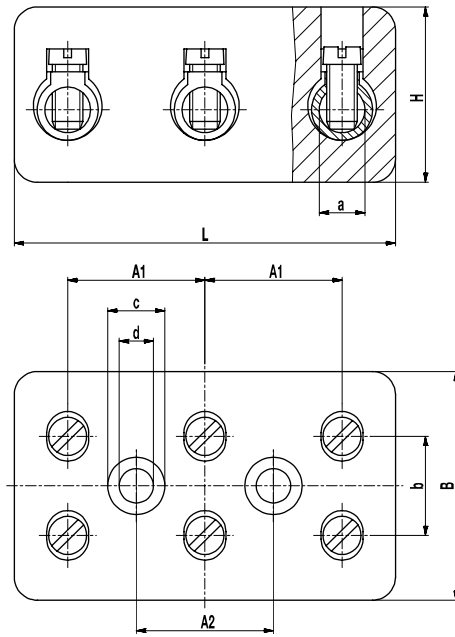
Clamping Range	<i>solid / stranded / AWG</i> 2,5 - 16 mm ² / 1,5 - 10 mm ² / 16 - 8 AWG [1]
Rated Cross Section	10 mm ²
Wire Stripping Length	8,5 mm ± 1 mm
Rated Insulation Voltage	750 V acc. to EN 60998-1
Rated Current	57 A
Torque	1,2 Nm
Base mounting	Recommendation: 4010-B: Cylinder head screw M5 4011-B: Cylinder head screw M4 both versions with matching washer; max. torque 1.5 Nm; use of an elastic & insulating substrate.
Other specifications	Terminal blocks must not be strung together without considering the clearance and creepage distances.

APPROVALS

	Current [A]	Voltage [V]	Group	AWG	[Nm]
	50	600	B, C	14 - 8	1,13
	5	600	D	14 - 8	1,13

CONFIGURATIONS

Item	Article number	PU
4010-B	10.610.010	70
4011-B	10.610.011	36



Dimensions (mm)

Type	L	B	H	A1	A2	a	b	c	d
4010-B	35	29	21	20	-	5,5	12,5	9	5,5
4011-B	51	30	23	18	18	6	13	7,5	4,5

MATERIAL

Moulding	Technical ceramics
Comparative Tracking Index	CTI ≥ 600
Insulating Group	I
Temperature Range	-40°C up to 250°C
Terminal body	Nickel plated brass
Screw	M4; Zinc plated steel, blue passivated

[1] The clamping range for flexible and AWG conductors was determined using ferrules. Use of flexible conductors without ferrules is not recommended.

X-ON Electronics

Largest Supplier of Electrical and Electronic Components

Click to view similar products for [Fixed Terminal Blocks](#) category:

Click to view products by [Weco](#) manufacturer:

Other Similar products are found below :

[MBE-1512](#) [MBE-1520](#) [MBE-154](#) [MBE-156](#) [MBES-156](#) [MH-2512](#) [MHE-132](#) [MHE-163](#) [MI-254 \(35\)](#) [MPT-275](#) [ELM10110G](#) [BA311TU](#)
[BA411SU](#) [MV-254-D](#) [MV-255](#) [MV-493](#) [MVE-252](#) [MVE-253](#) [MVEB-153](#) [1705142](#) [1-796689-8](#) [1841320000](#) [S451](#) [29.007](#) [29.116](#) [30.204](#)
[30.503](#) [30.756](#) [30.853](#) [9872-0-00-15-00-00-33-0](#) [996750](#) [1710052](#) [20020316-G071B01LF](#) [20020327-C061B01LF](#) [29590](#) [30.652](#) [30.710](#)
[30.754](#) [30.757](#) [32.058](#) [37.206](#) [37.208](#) [37.507](#) [37.558](#) [38331-5812](#) [38331-8018](#) [38540-1910](#) [39.002](#) [MBE-1517](#) [MBE-153](#)