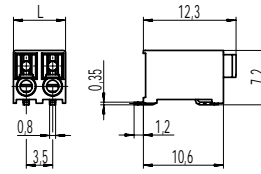
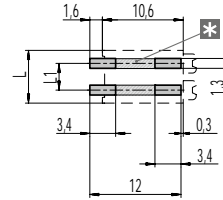


# 830-A-111-SMD

PCB connector for SMD  
Push-In connection



### PCB LAYOUT (RECOMMENDATION)



L = (No. of poles) x pitch  
L1 = (No. of poles - 1) x pitch  
Solder paste thickness:  
0,15 - 0,2 mm

\* Both solder pads of each pole can be connected together.

### GENERAL INFORMATION

|                      |                              |
|----------------------|------------------------------|
| Pitch                | 3,5 mm                       |
| No. of poles         | 2 + 3                        |
| Areas of application | Lighting technology, devices |

### TECHNICAL DATA

|                          |  |        |        |
|--------------------------|--|--------|--------|
| Clamping Range           | solid / stranded / AWG<br>0,2 - 1,0 mm <sup>2</sup> / 0,2 - 0,75 mm <sup>2</sup> / 24 - 18 AWG |        |        |
| Rated Cross Section      | 1 mm <sup>2</sup> (starr / solid) / 0,75 mm <sup>2</sup>                                       |        |        |
| Wire Stripping Length    | 7,5 mm ± 0,5 mm  |        |        |
| Overvoltage Category     | III  | III    | II     |
| Pollution Severity Level | 3  | 2      | 2      |
| Rated Voltage            | 160 V  | 160 V  | 320 V  |
| Rated Impulse Voltage    | 2,5 kV   | 2,5 kV | 2,5 kV |
| Rated Insulation Voltage | 130 V acc. to EN 60998-1   |        |        |
| Rated Current            | 13,5 A apply to 1 mm <sup>2</sup> solid<br>9 A apply to 0,75 mm <sup>2</sup>                   |        |        |
| Soldering process        | Reflow solder  |        |        |

### APPROVALS

|  | Current [A] | Voltage [V] | Group | AWG     | [Nm] |
|--|-------------|-------------|-------|---------|------|
|  | 6           | 300         | B     | 24 - 18 |      |

### MATERIAL

|                            |   |
|----------------------------|---|
| Moulding                   | PA HT, white, V-0   |
| Comparative Tracking Index | CTI ≥ 600   |
| Insulating Group           | I   |
| Temperature Range          | -40°C up to 120°C; reflow solder temperature peak max. 255°C acc. to DIN EN 61760-1 |
| Terminal body              | Tin plated copper alloy   |
| Spring                     | Stainless steel   |

### OPTIONS / ACCESSORIES

- Consecutive numbering
- Special marking according to drawing
- Black colour on request

### CONFIGURATIONS

| Poles | Part number          | Article number | Length (L) | Packaging    | PU   | Tape Width | Tape Height |
|-------|----------------------|----------------|------------|--------------|------|------------|-------------|
| 2     | 830-A-111-SMD/02     | 10.813.002     | 6,90 mm    | Box          | 3626 |            |             |
| 3     | 830-A-111-SMD/03     | 10.813.003     | 10,40 mm   | Box          | 2401 |            |             |
| 2     | 830-A-111-SMD/02-T&R | 10.813.002.A00 | 6,90 mm    | Tape-on-Reel | 550  | 24 mm      | 8,4 mm      |
| 3     | 830-A-111-SMD/03-T&R | 10.813.003.A00 | 10,40 mm   | Tape-on-Reel | 550  | 24 mm      | 8,4 mm      |



## X-ON Electronics

Largest Supplier of Electrical and Electronic Components

*Click to view similar products for [Fixed Terminal Blocks](#) category:*

*Click to view products by [Weco](#) manufacturer:*

Other Similar products are found below :

[MBE-1512](#) [MBE-1520](#) [MBE-154](#) [MBE-156](#) [MBES-156](#) [MH-2512](#) [MHE-132](#) [MHE-163](#) [MI-254 \(35\)](#) [MPT-275](#) [ELM10110G](#) [BA311TU](#)  
[BA411SU](#) [MV-254-D](#) [MV-255](#) [MV-493](#) [MVE-252](#) [MVE-253](#) [MVEB-153](#) [1705142](#) [1-796689-8](#) [1841320000](#) [S451](#) [29.007](#) [29.116](#) [30.204](#)  
[30.503](#) [30.756](#) [30.853](#) [9872-0-00-15-00-00-33-0](#) [996750](#) [1710052](#) [20020316-G071B01LF](#) [20020327-C061B01LF](#) [29590](#) [30.652](#) [30.710](#)  
[30.754](#) [30.757](#) [32.058](#) [37.206](#) [37.208](#) [37.507](#) [37.558](#) [38331-5812](#) [38331-8018](#) [38540-1910](#) [39.002](#) [MBE-1517](#) [MBE-153](#)