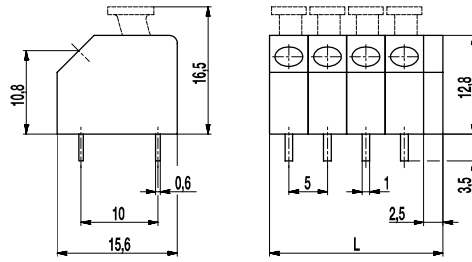
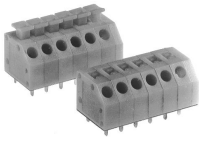


# 874(-DR)

PCB connector

Push-In connection diagonal 45° to PCB



## GENERAL INFORMATION

|              |        |
|--------------|--------|
| Pitch        | 5 mm   |
| No. of poles | 1 - 12 |

## TECHNICAL DATA

|                          |   |       |       |
|--------------------------|---|-------|-------|
| Clamping Range           | <i>solid / stranded / AWG</i>   |       |       |
|                          | 0,14 - 2,5 mm <sup>2</sup> / 0,14 - 1,5 mm <sup>2</sup> / 26 - 16 AWG |       |       |
| Rated Cross Section      | 1,5 mm <sup>2</sup>   |       |       |
| Wire Stripping Length    | 10 mm ± 0,5 mm  |       |       |
| Overvoltage Category     | III   | III   | II    |
| Pollution Severity Level | 3   | 2     | 2     |
| Rated Voltage            | 250 V   | 320 V | 630 V |
| Rated Impulse Voltage    | 4 kV  | 4 kV  | 4 kV  |
| Rated Insulation Voltage | 250 V acc. to EN 60998-1  |       |       |
| Rated Current            | 10 A  |       |       |
| Hole in PCB              | ø 1,3 mm  |       |       |

## APPROVALS

|  | Current [A] | Voltage [V] | Group   | AWG     | [Nm] |
|--|-------------|-------------|---------|---------|------|
|  | 10          | 300         | B       | 22 - 16 |      |
|  | 10          | 300         | B, D, E | 22 - 16 |      |

## MATERIAL

|                            |                                |
|----------------------------|--------------------------------|
| Moulding                   | PA, red, V-0                   |
| Comparative Tracking Index | CTI ≥ 600                      |
| Insulating Group           | I                              |
| Temperature Range          | -40°C up to 100°C              |
| Terminal body              | Tin plated brass               |
| Solder pin                 | 0,6 x 1,0 mm; tin plated brass |
| Spring                     | Stainless strip steel          |

## OPTIONS / ACCESSORIES

- Consecutive numbering
- Special marking according to drawing
- Self-adhesive marking strip BST-5,00
- Other Pitch

## CONFIGURATIONS

| Poles | Part number | Article number | Part number | Article number | Length (L) | Packaging | PU  |
|-------|-------------|----------------|-------------|----------------|------------|-----------|-----|
| 1     | 874/01      | 11.812.001     | 874-DR/01   | 41.812.001     | 7,50 mm    | Box       | 250 |
| 2     | 874/02      | 12.812.001     | 874-DR/02   | 42.812.001     | 12,50 mm   | Box       | 200 |
| 3     | 874/03      | 13.812.001     | 874-DR/03   | 43.812.001     | 17,50 mm   | Box       | 100 |
| 4     | 874/04      | 14.812.001     | 874-DR/04   | 44.812.001     | 22,50 mm   | Box       | 100 |
| 5     | 874/05      | 15.812.001     | 874-DR/05   | 45.812.001     | 27,50 mm   | Box       | 100 |
| 6     | 874/06      | 16.812.001     | 874-DR/06   | 46.812.001     | 32,50 mm   | Box       | 50  |

further number of poles on request



## X-ON Electronics

Largest Supplier of Electrical and Electronic Components

*Click to view similar products for [Weco manufacturer](#):*

Other Similar products are found below :

[110-A-111/02](#) [110-A-111/03](#) [110-A-111/04](#) [110-A-111/05](#) [110-A-111/06](#) [110-A-111/08-BA](#) [110-M-111/02](#) [110-M-111/05](#) [110-M-111/06](#)  
[110-M-121/02](#) [110-M-121/06](#) [110-M-211/02](#) [110-M-211/03](#) [110-M-211/04](#) [110-M-211/05](#) [110-M-211/06](#) [110-M-211-SMD/02-MAG](#) [110-M-211-SMD/03-MAG](#) [110-M-211-SMD/04-MAG](#) [110-M-221/02](#) [110-M-221/03](#) [110-M-221/04](#) [110-M-221/05](#) [110-M-221/06](#) [110-P-111/16](#)  
[120-A-111/02-K](#) [120-A-111/03](#) [120-A-111/04](#) [120-A-111/05](#) [120-A-111/06](#) [120-A-111/10-333](#) [120-D-111/08](#) [120-D-121/06](#) [120-M-211/02](#)  
[120-M-211/02-K](#) [120-M-211/03](#) [120-M-221/02](#) [120-M-221/03](#) [120-M-221/04](#) [120-M-221/06](#) [120-M-222/06](#) [120-M-222/08](#) [120-M-222/10](#)  
[121-A-111/02](#) [121-A-111/03](#) [121-A-111/04](#) [121-A-111/05](#) [121-A-111/06](#) [121-D-121/05](#) [121-M-111 /02](#)