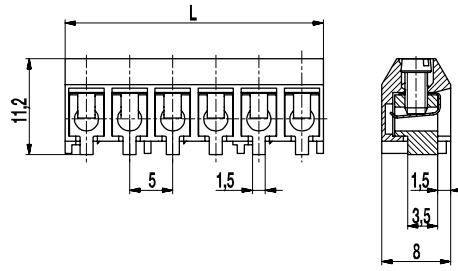
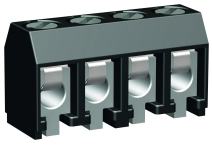
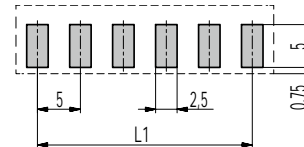


950-D-SMD-DS

PCB connector for SMD
Screw connection



PCB LAYOUT



L1 = (No. of poles - 1) x pitch
Solder paste thickness: 0,15 - 0,2 mm

GENERAL INFORMATION

Pitch	5 mm
No. of poles	2 - 12

TECHNICAL DATA

Clamping Range	solid / stranded / AWG		
with wire protector	0,34 - 2,5 mm ² / 0,34 - 2,5 mm ² / 22 - 14 AWG		
Rated Cross Section	1,5 mm ²		
Wire Stripping Length	6 mm ± 0,5 mm		
Overvoltage Category	III	III	II
Pollution Severity Level	3	2	2
Rated Voltage	160 V	160 V	320 V
Rated Impulse Voltage	2,5 kV	2,5 kV	2,5 kV
Rated Insulation Voltage	130 V acc. to EN 60998-1		
Rated Current	17,5 A		
Soldering process	Reflow solder		
Torque	0,4 Nm		

APPROVALS

	Current [A]	Voltage [V]	Group	AWG	[Nm]
	15	300	B	26 - 14	0,4
	15	300	B	26 - 14	0,4

MATERIAL

Moulding	PA HT, black, V-0
Comparative Tracking Index	CTI ≥ 600
Insulating Group	I
Temperature Range	-40°C up to 120°C; reflow solder temperature peak max. 255°C acc. to DIN EN 61760-1
Terminal body	Tin plated brass
Screw	M2,6; zinc plated steel, blue passivated
Wire protector	Tin plated tin bronze

OPTIONS / ACCESSORIES

- Consecutive numbering
- Special marking according to drawing
- Self-adhesive marking strip BST-5,00 [1]
- Special packaging on request: Tray - Bar magazine

[1] To be fitted after reflow soldering process

CONFIGURATIONS

Poles	Part number	Article number	Length (L)	Packaging	PU	Tape Width	Tape Height
2	950-D-SMD-DS/02	20.879.502	10,00 mm	Box	250		
3	950-D-SMD-DS/03	20.879.503	15,00 mm	Box	250		
4	950-D-SMD-DS/04	20.879.504	20,00 mm	Box	100		
5	950-D-SMD-DS/05	20.879.505	25,00 mm	Box	100		
6	950-D-SMD-DS/06	20.879.506	30,00 mm	Box	100		
2	950-D-SMD-DS/02-T&R	20.879.502.A00	10,00 mm	Tape-on-Reel	500	32 mm	12,3 mm
3	950-D-SMD-DS/03-T&R	20.879.503.A00	15,00 mm	Tape-on-Reel	500	44 mm	12,0 mm
4	950-D-SMD-DS/04-T&R	20.879.504.A00	20,00 mm	Tape-on-Reel	500	44 mm	12,0 mm
5	950-D-SMD-DS/05-T&R	20.879.505.A00	25,00 mm	Tape-on-Reel	500	44 mm	12,0 mm
6	950-D-SMD-DS/06-T&R	20.879.506.A00	30,00 mm	Tape-on-Reel	500	56 mm	12,0 mm



X-ON Electronics

Largest Supplier of Electrical and Electronic Components

Click to view similar products for [Weco manufacturer](#):

Other Similar products are found below :

[110-A-111/02](#) [110-A-111/03](#) [110-A-111/04](#) [110-A-111/05](#) [110-A-111/06](#) [110-A-111/08-BA](#) [110-M-111/02](#) [110-M-111/05](#) [110-M-111/06](#)
[110-M-121/02](#) [110-M-121/06](#) [110-M-211/02](#) [110-M-211/03](#) [110-M-211/04](#) [110-M-211/05](#) [110-M-211/06](#) [110-M-211-SMD/02-MAG](#) [110-M-211-SMD/03-MAG](#) [110-M-211-SMD/04-MAG](#) [110-M-221/02](#) [110-M-221/03](#) [110-M-221/04](#) [110-M-221/05](#) [110-M-221/06](#) [110-P-111/16](#)
[120-A-111/02-K](#) [120-A-111/03](#) [120-A-111/04](#) [120-A-111/05](#) [120-A-111/06](#) [120-A-111/10-333](#) [120-D-111/08](#) [120-D-121/06](#) [120-M-211/02](#)
[120-M-211/02-K](#) [120-M-211/03](#) [120-M-221/02](#) [120-M-221/03](#) [120-M-221/04](#) [120-M-221/06](#) [120-M-222/06](#) [120-M-222/08](#) [120-M-222/10](#)
[121-A-111/02](#) [121-A-111/03](#) [121-A-111/04](#) [121-A-111/05](#) [121-A-111/06](#) [121-D-121/05](#) [121-M-111 /02](#)