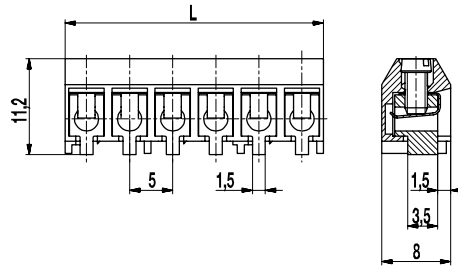
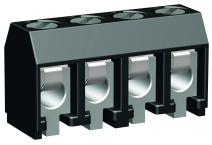
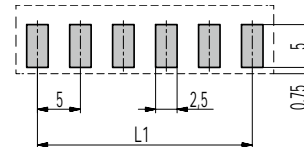


# 950-D-SMD-DS

PCB connector for SMD  
Screw connection



### PCB LAYOUT



L1 = (No. of poles - 1) x pitch  
Solder paste thickness: 0,15 - 0,2 mm

### GENERAL INFORMATION

Pitch	5 mm
No. of poles	2 - 12

### TECHNICAL DATA

Clamping Range	solid / stranded / AWG		
with wire protector	0,34 - 2,5 mm <sup>2</sup> / 0,34 - 2,5 mm <sup>2</sup> / 22 - 14 AWG		
Rated Cross Section	1,5 mm <sup>2</sup>		
Wire Stripping Length	6 mm ± 0,5 mm		
Overvoltage Category	III	III	II
Pollution Severity Level	3	2	2
Rated Voltage	160 V	160 V	320 V
Rated Impulse Voltage	2,5 kV	2,5 kV	2,5 kV
Rated Insulation Voltage	130 V acc. to EN 60998-1		
Rated Current	17,5 A		
Soldering process	Reflow solder		
Torque	0,4 Nm		

### APPROVALS

	Current [A]	Voltage [V]	Group	AWG	[Nm]
	15	300	B	26 - 14	0,4
	15	300	B	26 - 14	0,4

### MATERIAL

Moulding	PA HT, black, V-0
Comparative Tracking Index	CTI ≥ 600
Insulating Group	I
Temperature Range	-40°C up to 120°C; reflow solder temperature peak max. 255°C acc. to DIN EN 61760-1
Terminal body	Tin plated brass
Screw	M2,6; zinc plated steel, blue passivated
Wire protector	Tin plated tin bronze

### OPTIONS / ACCESSORIES

- Consecutive numbering
- Special marking according to drawing
- Self-adhesive marking strip BST-5,00 [1]
- Special packaging on request: Tray - Bar magazine

[1] To be fitted after reflow soldering process

### CONFIGURATIONS

Poles	Part number	Article number	Length (L)	Packaging	PU	Tape Width	Tape Height
2	950-D-SMD-DS/02	20.879.502	10,00 mm	Box	250		
3	950-D-SMD-DS/03	20.879.503	15,00 mm	Box	250		
4	950-D-SMD-DS/04	20.879.504	20,00 mm	Box	100		
5	950-D-SMD-DS/05	20.879.505	25,00 mm	Box	100		
6	950-D-SMD-DS/06	20.879.506	30,00 mm	Box	100		
2	950-D-SMD-DS/02-T&R	20.879.502.A00	10,00 mm	Tape-on-Reel	500	32 mm	12,3 mm
3	950-D-SMD-DS/03-T&R	20.879.503.A00	15,00 mm	Tape-on-Reel	500	44 mm	12,0 mm
4	950-D-SMD-DS/04-T&R	20.879.504.A00	20,00 mm	Tape-on-Reel	500	44 mm	12,0 mm
5	950-D-SMD-DS/05-T&R	20.879.505.A00	25,00 mm	Tape-on-Reel	500	44 mm	12,0 mm
6	950-D-SMD-DS/06-T&R	20.879.506.A00	30,00 mm	Tape-on-Reel	500	56 mm	12,0 mm



## X-ON Electronics

Largest Supplier of Electrical and Electronic Components

*Click to view similar products for [Fixed Terminal Blocks](#) category:*

*Click to view products by [Weco](#) manufacturer:*

Other Similar products are found below :

[MBE-1512](#) [MBE-1520](#) [MBE-154](#) [MBE-156](#) [MBES-156](#) [MH-2512](#) [MHE-132](#) [MHE-163](#) [MI-254 \(35\)](#) [MPT-275](#) [ELM10110G](#) [BA311TU](#)  
[BA411SU](#) [MV-254-D](#) [MV-255](#) [MV-493](#) [MVE-252](#) [MVE-253](#) [MVEB-153](#) [1705142](#) [1-796689-8](#) [1841320000](#) [S451](#) [29.007](#) [29.116](#) [30.204](#)  
[30.503](#) [30.756](#) [30.853](#) [9872-0-00-15-00-00-33-0](#) [996750](#) [1710052](#) [20020316-G071B01LF](#) [20020327-C061B01LF](#) [29590](#) [30.652](#) [30.710](#)  
[30.754](#) [30.757](#) [32.058](#) [37.206](#) [37.208](#) [37.507](#) [37.558](#) [38331-5812](#) [38331-8018](#) [38540-1910](#) [39.002](#) [MBE-1517](#) [MBE-153](#)