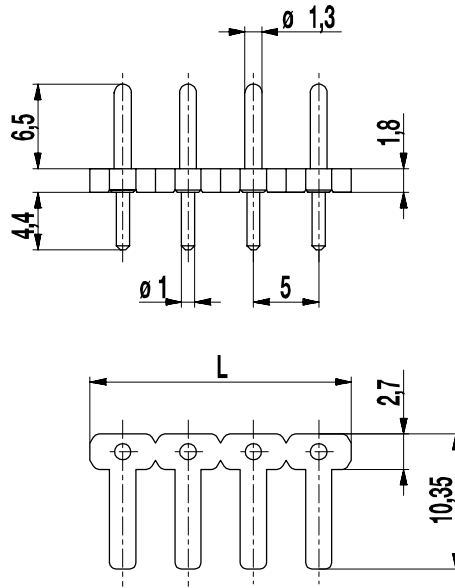
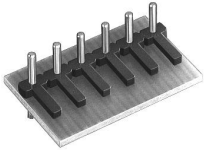


# 971-SLW

Pin strip

Soldering area  $\varnothing$  1 mm; plug-in area  $\varnothing$  1,3 mm, with long support



## GENERAL INFORMATION

Pitch	5 mm
No. of poles	2 - 24
Usable with	all sockets and plugs of series 95-FB und 97-FB, 97-FBW, 97-FBS
Additional Information	Application tip: In combination with 95-FB or 97-FB series socket connectors, printed circuit boards can be directly connected.

## TECHNICAL DATA

Overvoltage Category	III	III	II
Pollution Severity Level	3	2	2
Rated Voltage	200 V	320 V	320 V
Rated Impulse Voltage	4 kV	4 kV	4 kV
Rated Current	6 A		
Hole in PCB	$\varnothing$ 1,3 mm		

## APPROVALS

	Current [A]	Voltage [V]	Group	AWG	[Nm]
	10	300	B		
	10	300	B		
	Current [A]	Voltage [V]	mm <sup>2</sup>		
	13,5	200 [1]			

## MATERIAL

Moulding	PBTP, black , V-0
Comparative Tracking Index	CTI 175
Insulating Group	IIIa
Temperature Range	-40°C up to 100°C
Solder pin	$\varnothing$ 1,3 mm (plug-in area) / $\varnothing$ 1,0 mm (soldering area); tin plated brass

## OPTIONS / ACCESSORIES

- Pitch of 10 mm for larger clearance and creepage distances
- Other pin lengths on request
- Other solder pin surfaces on request

[1] Acc. to IEC 60947-7-4 und IEC 60947-1

## CONFIGURATIONS

Poles	Part number	Article number	Length (L)	Packaging	PU
2	971-SLW/02	12.893.603	10,00 mm	Box	1000
3	971-SLW/03	13.893.603	15,00 mm	Box	500
4	971-SLW/04	14.893.603	20,00 mm	Box	250
5	971-SLW/05	15.893.603	25,00 mm	Box	250
6	971-SLW/06	16.893.603	30,00 mm	Box	250



## X-ON Electronics

Largest Supplier of Electrical and Electronic Components

*Click to view similar products for [Headers & Wire Housings](#) category:*

*Click to view products by [Weco](#) manufacturer:*

Other Similar products are found below :

[0015917161](#) [0022155065](#) [57102-F02-18ULF](#) [58102-G61-06LF](#) [582553-1](#) [01.001.5753.1](#) [0050291907](#) [02.125.8002.8](#) [609-3404](#) [61062-3](#)  
[CSU011177004](#) [622-0430](#) [622-3653LF](#) [63453-116](#) [636-1030](#) [636-1427](#) [636-3427](#) [636-4007](#) [641938-9](#) [65495-038](#) [65692-001LF](#) [65781-018](#)  
[65781-047](#) [65817-010LF](#) [65817-015LF](#) [67095-007LF](#) [67601157](#) [68631-112](#) [68645-018](#) [699319-000](#) [70.362.1628.0](#) [70-4210](#) [70-4226B](#) [70-](#)  
[4853B](#) [71.350.2428.0](#) [733-134](#) [733-162](#) [MHR-64-VUAL](#) [80.063.4001.1](#) [800-90-001-10-001000](#) [801-43-002-10-013000](#) [801-43-006-10-](#)  
[002000](#) [803-43-024-10-001000](#) [803-93-012-10-001000](#) [8-1437020-4](#) [819-22-004-30-001101](#) [820-22-006-30-001101](#) [820-22-008-30-001101](#)  
[821-22-002-10-001101](#) [821-22-003-10-002101](#)