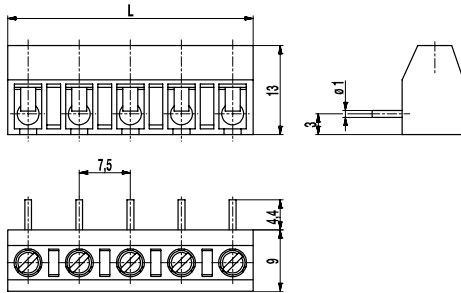
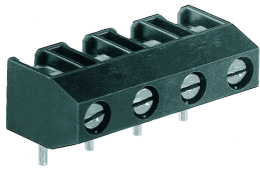


977-OPSG(-DS)

PCB connector

Screw connection, wire entrance vertical to PCB



The PCB screw connector 977-OPSG is the horizontal version of 977-OP with a pitch of 7,5 mm. It is available in 2- to 19-pole design and can be mounted side-by-side in the nominal pitch.

Due to their large clearance and creepage distances, these PCB connectors are particularly suitable for higher voltages.

Wire protection in DS-design reliably prevents damage to stranded wires by the screw.

The wire entrance is vertical to the PCB.

The screws are secured against self-loosening.

Part Numbers

No. of poles	977-OPSG	977-OPSG-DS	Length	PU
2	10.872.352	20.872.352	13,50	250
3	10.872.353	20.872.353	21,00	250
4	10.872.354	20.872.354	28,50	200
5	10.872.355	20.872.355	36,00	100
6	10.872.356	20.872.356	43,50	100
7	10.872.357	20.872.357	51,00	100
8	10.872.358	20.872.358	58,50	100
9	10.872.359	20.872.359	66,00	100
10	10.872.360	20.872.360	73,50	100
11	10.872.361	20.872.361	81,00	100
12	10.872.362	20.872.362	88,50	100
13	10.872.363	20.872.362	96,00	100
14	10.872.364	20.872.364	103,50	100
15	10.872.365	20.872.365	111,00	100
16	10.872.366	20.872.366	118,50	100
17	10.872.367	20.872.367	126,00	100
18	10.872.368	20.872.368	133,50	100
19	10.872.369	20.872.369	141,00	100

General Information

Pitch	7,5 mm
No. of poles	2 - 19




Technical Data

Clamping Range	<i>solid / flexible / AWG</i>		
<i>without wire protector</i>	1 - 6 mm ² / 1 - 2,5 mm ² / 16 - 12 AWG		
<i>with wire protector</i>	0,75 - 4 mm ² / 0,75 - 2,5 mm ² / 18 - 12 AWG		
Rated Cross Section	2,5 mm ²		
Wire Stripping Length	5,5 mm ± 0,5 mm		
Overvoltage Category	III	III	II
Pollution Severity Level	3	2	2
Rated Voltage	500 V (400 V)	630 V	1000 V (630V)
Rated Impulse Voltage	6 kV	6 kV	6 kV
Rated Current	24 A		
Hole in PCB	ø 1,3 mm		
Torque	0,5 Nm		
Other specifications	Rated voltage in brackets applies to 9-19-pole connectors, "no-flame" according to glow wire test applies to 2-8-pole connectors.		

Material

Moulding	PA, grey, V-0
Comparative Tracking Index	2-8 poles: CTI ≥ 600; 9-19 poles: CTI 250
Insulating Group	2-8 poles: I; 9-19 poles: IIIa
Temperature Range	-40°C up to 100°C
Terminal body	Tin plated brass
Screw	M3; zinc plated steel, blue passivated
Solder pin	ø 1 mm; tin plated brass
Wire protector	Tin plated tin bronze

Approvals

	Current [A]	Voltage [V]	Group	AWG	[Nm]
	15	300	B	22-12 [1]	0,51
	20	300	B	26 - 12	0,51
	10	300	D, E	26 - 12	0,51
	Current [A]	Voltage [V]	[mm ²]		
	24	450	2,5 [2]		

[1] Min No. 26 AWG for factory-wiring only

[2] Acc. to IEC 60947-7-4 und IEC 60947-1

Options / Accessories

- Consecutive numbering
- Special marking according to drawing
- Self-adhesive marking strip BST-7,50

X-ON Electronics

Largest Supplier of Electrical and Electronic Components

Click to view similar products for [Barrier Terminal Blocks](#) category:

Click to view products by [Weco](#) manufacturer:

Other Similar products are found below :

[CR151D20104](#) [670A-RZ-15-KT20](#) [6C1N03](#) [6PCR-02](#) [6PCR-02-008](#) [6PCR-05-008](#) [6PCR-08-008](#) [6PCR-09-008](#) [6PCR-13-006](#) [6PCR-15-006](#) [6PCV-06-008](#) [6PCV-06-716](#) [6PCV-09-001](#) [6PCV-15-008](#) [6PCV-17-1206](#) [6PCV-20-323](#) [6STR-06-006](#) [6STR-08-006](#) [6STR-12-008](#) [6STR-13-006](#) [6STR-14-008](#) [6STR-16-008](#) [6STR-17-008](#) [6STR-21-008](#) [6STR-25-008](#) [6STR-27-008](#) [6STV-03-008](#) [6STV-09-006](#) [6STV-10-006](#) [6WWV-11-008](#) [6WWV-12-008](#) [6WWV-16-008](#) [71502-50](#) [71507-47-50](#) [72504-C-50](#) [72506-C](#) [72507-C-50](#) [72508-56](#) [73203](#) [75505-C-50](#) [812-GP-3/4ST-09](#) [812-GPZ-03PSB](#) [8-1437402-5](#) [8-1437402-7](#) [8PCR-06-006](#) [8PCR-11-006](#) [8PCV-04-001](#) [8PCV-05-008](#) [8PCV-09-006](#) [8PCV-15-006](#)