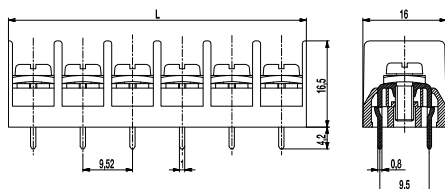
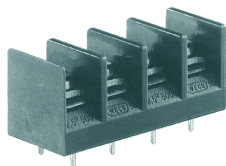


## PCB connector

### 982-D

Screw connection, 2 solder pins per pole



The PCB connector 982-D in 9.52 mm pitch is available in 2- to 26-pole design and can be mounted side-by-side in the nominal pitch. This version is equipped with two solder pins per pole.

The conductor terminal is of head contact design, whereby the screws and square washers are movably connected.

For easier connection, the non-rotably mounted square washers are automatically lifted when the screw is loosened.

### Part Numbers

No. of poles	982-D	Length	Pcs
2	20.873.702	19,00	200
3	20.873.703	28,60	250
4	20.873.704	38,10	100
5	20.873.705	47,60	50
6	20.873.706	57,10	50
7	20.873.707	66,60	50
8	20.873.708	76,20	50
9	20.873.709	85,70	50
10	20.873.710	95,20	50
11	20.873.711	104,70	50
12	20.873.712	114,30	50
13	20.873.713	123,80	50
14	20.873.714	133,30	25
15	20.873.715	142,80	25
16	20.873.716	152,30	25
17	20.873.717	161,90	25
18	20.873.718	171,40	25
19	20.873.719	180,90	25
20	20.873.720	190,40	25
21	20.873.721	199,90	25
22	20.873.722	209,50	25
23	20.873.723	219,00	25
24	20.873.724	228,50	25
25	20.873.725	238,00	20
26	20.873.726	247,60	20

### General Information

Pitch	9,52 mm
No. of poles	2 - 26

### Technical Data

Clamping Range	<i>solid / flexible / AWG</i> 0,75 - 2,5 mm <sup>2</sup> / 0,75 - 2,5 mm <sup>2</sup> / 18 - 12 AWG
Rated Cross Section	2,5 mm <sup>2</sup>
Wire Stripping Length	8,5 mm
Overvoltage Category	III
Pollution Severity Level	3
Rated Voltage	320 V
Rated Impulse Voltage	4 kV
Rated Insulation Voltage	450 V acc. to EN 60998-1
Rated Current	24 A at 30°C ambient temperature
Hole in PCB	ø 1,6 mm
Torque	0,8 Nm
Other specifications	Per pole two conductors of identical cross-section can be connected.

### Material

Moulding	PA, grey, V-0
Comparative Tracking Index	CTI ≥ 600
Insulating Group	I
Temperature Range	-40°C up to 100°C
Pressure clamp	Tin plated brass
Screw	M3,5; zinc plated steel, blue passivated
Solder pin	0,8 x 1,0 mm; tin plated brass

### Approvals

	Current	Voltage	Group	AWG	Nm
	20	300	B	20 - 12	0,79
	20	300	B	20 - 12	0,79
	10	300	D, E	20 - 12	0,79

### Options / Accessories

- Consecutive numbering
- Special marking according to drawing
- Crosshead screws
- Cover cap 982-A
- Securing pins BEF-983
- Tab connections
- 10 mm pin length

## X-ON Electronics

Largest Supplier of Electrical and Electronic Components

*Click to view similar products for [Barrier Terminal Blocks](#) category:*

*Click to view products by [Weco](#) manufacturer:*

Other Similar products are found below :

[CR151D20104](#) [670A-RZ-15-KT20](#) [6C1N03](#) [6PCR-02](#) [6PCR-02-008](#) [6PCR-05-008](#) [6PCR-08-008](#) [6PCR-09-008](#) [6PCR-13-006](#) [6PCR-15-006](#) [6PCV-06-008](#) [6PCV-06-716](#) [6PCV-09-001](#) [6PCV-15-008](#) [6PCV-17-1206](#) [6PCV-20-323](#) [6STR-06-006](#) [6STR-08-006](#) [6STR-12-008](#) [6STR-13-006](#) [6STR-14-008](#) [6STR-16-008](#) [6STR-17-008](#) [6STR-21-008](#) [6STR-25-008](#) [6STR-27-008](#) [6STV-03-008](#) [6STV-09-006](#) [6STV-10-006](#) [6WWV-11-008](#) [6WWV-12-008](#) [6WWV-16-008](#) [71502-50](#) [71507-47-50](#) [72504-C-50](#) [72506-C](#) [72507-C-50](#) [72508-56](#) [73203](#) [75505-C-50](#) [812-GP-3/4ST-09](#) [812-GPZ-03PSB](#) [8-1437402-5](#) [8-1437402-7](#) [8PCR-06-006](#) [8PCR-11-006](#) [8PCV-04-001](#) [8PCV-05-008](#) [8PCV-09-006](#) [8PCV-15-006](#)