

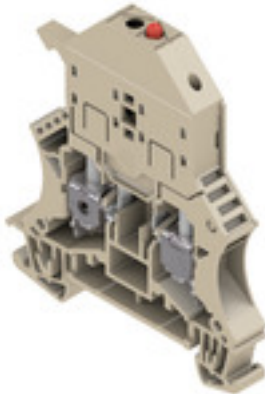
WSI 6/LD 60-150V DC/AC**Weidmüller Interface GmbH & Co. KG**

Klingenbergstraße 26

D-32758 Detmold

Germany

www.weidmueller.com

Product image**Klippon® Connect with clamping yoke Technology**

The high reliability and variety of designs of the terminal blocks with clamping yoke connections make planning easier and optimises operational safety. Klippon® Connect provides a proven response to a range of different requirements.

General ordering data

| | |
|------------|--|
| Version | W-Series, Fuse terminal, Rated cross-section: 6 mm ² , Screw connection |
| Order No. | 1012300000 |
| Type | WSI 6/LD 60-150V DC/AC |
| GTIN (EAN) | 4008 190012908 |
| Qty. | 10 pc(s). |

Creation date January 12, 2022 4:56:37 AM CET

Catalogue status 17.12.2021 / We reserve the right to make technical changes.

WSI 6/LD 60-150V DC/AC

Weidmüller Interface GmbH & Co. KG
Klingenbergstraße 26
D-32758 Detmold
Germany

www.weidmueller.com

Technical data

Dimensions and weights

| | | | |
|--------------------------|------------|----------------|------------|
| Depth | 71.5 mm | Depth (inches) | 2.815 inch |
| Depth including DIN rail | 72 mm | Height | 60 mm |
| Height (inches) | 2.362 inch | Width | 7.9 mm |
| Width (inches) | 0.311 inch | Weight | 21.5 g |
| Net weight | 19.37 g | | |

Temperatures

| | | | |
|----------------------------------|----------------|----------------------------------|--------|
| Storage temperature | -25 °C...55 °C | Continuous operating temp., min. | -50 °C |
| Continuous operating temp., max. | 120 °C | | |

Material data

| | | | |
|---------------------------|-------|--------|------------|
| Material | Wemid | Colour | dark beige |
| UL 94 flammability rating | V-0 | | |

System specifications

| | | | |
|-------------------------------------|---|-------------------------------|-----|
| Version | Screw connection, Fuse isolator, with LED, for screwable cross- connection, One end without connector | End cover plate required | Yes |
| Number of potentials | 1 | Number of levels | 1 |
| Number of clamping points per level | 2 | Number of potentials per tier | 1 |
| Levels cross-connected internally | No | PE connection | No |
| Rail | TS 35 | N-function | No |
| PE function | No | PEN function | No |

2 clampable conductors (H05V/H07V) with equal cross-section (rated connection)

| | | | |
|--|---------------------|--|---------------------|
| Wire connection cross section, finely stranded with wire-end ferrules DIN 46228/1, 2 clampable wires, max. | 2.5 mm ² | Wire connection cross section, finely stranded with wire-end ferrules DIN 46228/1, 2 clampable wires, min. | 0.5 mm ² |
| Wire connection cross section, finely stranded, two clampable wires, min. | 0.5 mm ² | Wire cross-section, finely stranded, two clampable wires, max. | 2.5 mm ² |

Additional technical data

| | | | |
|--------------------------|-------|-----------------------------|---------|
| Explosion-tested version | No | Number of similar terminals | 1 |
| Open sides | right | Type of mounting | Snap-on |

CSA rating data

| | | | |
|-------------------------------|----------------|-------------------------------|-------|
| Certificate No. (CSA) | 200039-1057876 | Wire cross section max. (CSA) | 8 AWG |
| Wire cross section min. (CSA) | 20 AWG | | |

Conductors for clamping (additional connection)

| | |
|---|-------------------|
| Conductor cross-section, flexible plus plastic collar DIN 46228/1, further connection, max. | 6 mm ² |
|---|-------------------|

Conductors for clamping (rated connection)

| | |
|------------|--------------|
| Blade size | 0.8 x 4.0 mm |
|------------|--------------|

Creation date January 12, 2022 4:56:37 AM CET

WSI 6/LD 60-150V DC/AC

Weidmüller Interface GmbH & Co. KG
 Klingenbergstraße 26
 D-32758 Detmold
 Germany

www.weidmueller.com

Technical data

| | | | | |
|--|--|-----------------------|---------------------|--------|
| Clampable conductor | Connection specification | | Screw connection | |
| | Cross-section for conductor connection | Type | solid, H05(07) V-U | |
| | | min. | 0.5 mm ² | |
| | | max. | 10 mm ² | |
| | | nominal | 6 mm ² | |
| | wire end ferrule | Stripping length | min. | 12 mm |
| | | | max. | 12 mm |
| | | | nominal | 12 mm |
| | | Tightening torque | min. | 0.8 Nm |
| | max. | | 1.6 Nm | |
| | Recommended wire-end ferrule | | | |
| | Connection specification | | Screw connection | |
| Cross-section for conductor connection | Type | stranded, H07V-R | | |
| | min. | 1.5 mm ² | | |
| | max. | 10 mm ² | | |
| | nominal | 6 mm ² | | |
| wire end ferrule | Stripping length | min. | 12 mm | |
| | | max. | 12 mm | |
| | | nominal | 12 mm | |
| | Tightening torque | min. | 0.8 Nm | |
| max. | | 1.6 Nm | | |
| Recommended wire-end ferrule | | | | |
| Connection specification | | Screw connection | | |
| Cross-section for conductor connection | Type | flexible, H05(07) V-K | | |
| | min. | 0.5 mm ² | | |
| | max. | 10 mm ² | | |
| | nominal | 6 mm ² | | |
| wire end ferrule | Stripping length | min. | 12 mm | |
| | | max. | 12 mm | |
| | | nominal | 12 mm | |
| | Tightening torque | min. | 0.8 Nm | |
| max. | | 1.6 Nm | | |
| Recommended wire-end ferrule | | | | |
| Clamping range, max. | 10 mm ² | | | |
| Clamping range, min. | 0.5 mm ² | | | |
| Clamping screw | M 3.5 | | | |
| Connection cross-section, stranded, max. | 10 mm ² | | | |
| Connection cross-section, stranded, min. | 1.5 mm ² | | | |
| Connection direction | on side | | | |
| Gauge to IEC 60947-1 | A5 | | | |
| Number of connections | 2 | | | |
| Stripping length | 12 mm | | | |
| Tightening torque, max. | 1.6 Nm | | | |
| Tightening torque, min. | 0.8 Nm | | | |
| Torque level with DMS electric screwdriver | 3 | | | |
| Type of connection | Screw connection | | | |
| Wire connection cross section AWG, max. | AWG 8 | | | |
| Wire connection cross section AWG, min. | AWG 20 | | | |
| Wire connection cross section, finely stranded, max. | 10 mm ² | | | |
| Wire connection cross section, finely stranded, min. | 0.5 mm ² | | | |

Creation date January 12, 2022 4:56:37 AM CET

WSI 6/LD 60-150V DC/AC

Weidmüller Interface GmbH & Co. KG

Klingenbergstraße 26

D-32758 Detmold

Germany

www.weidmueller.com

Technical data

| | |
|---|---------------------|
| Wire connection cross-section, finely stranded with wire-end ferrules DIN 46228/1, max. | 6 mm ² |
| Wire connection cross-section, finely stranded with wire-end ferrules DIN 46228/1, min. | 0.5 mm ² |
| Wire connection cross-section, finely stranded with wire-end ferrules DIN 46228/4, max. | 6 mm ² |
| Wire connection cross-section, finely stranded with wire-end ferrules DIN 46228/4, min. | 0.5 mm ² |
| Wire connection cross-section, solid core, max. | 10 mm ² |
| Wire connection cross-section, solid core, min. | 0.5 mm ² |

Dimensions

| | |
|--------------|-------|
| TS 35 offset | 32 mm |
|--------------|-------|

Display element

| | | | |
|-------------------------------------|-------|-------------------------------------|------|
| Operating voltage for display, max. | 150 V | Operating voltage for display, min. | 60 V |
| Type of voltage for indicator | AC/DC | | |

Fuse terminals

| | | | |
|--------------------------------|--------------|-------------------------|---------|
| Cartridge fuse | G-Si. 5 x 20 | Display | Red LED |
| Fuse holder (cartridge holder) | Pivoting | Operating voltage, max. | 150 V |
| Type of voltage for indicator | AC/DC | | |

General

| | | | |
|---|-------|---|---------------|
| Rail | TS 35 | Standards | IEC 60947-7-3 |
| Wire connection cross section AWG, max. | AWG 8 | Wire connection cross section AWG, min. | AWG 20 |

Rating data

| | | | |
|--|-------------------|---------------------------------|---------------|
| Rated cross-section | 6 mm ² | Rated voltage | 150 V |
| Rated voltage to adjoining terminal | 500 V | Rated current | 6.3 A |
| Current at maximum wires | 6.3 A | Standards | IEC 60947-7-3 |
| Volume resistance according to IEC 60947-7-x | 0.78 mΩ | Rated impulse withstand voltage | 6 kV |
| Power loss in accordance with IEC 60947-7-x | 1.31 W | Pollution severity | 3 |

UL rating data

| | | | |
|---|--------|---|-------|
| Certificate No. (UR) | E60693 | Conductor size Factory wiring max. (UR) | 8 AWG |
| Conductor size Factory wiring min. (UR) | 22 AWG | Conductor size Field wiring max. (UR) | 8 AWG |
| Conductor size Field wiring min. (UR) | 22 AWG | | |

WSI 6/LD 60-150V DC/AC

Weidmüller Interface GmbH & Co. KG
 Klingenbergstraße 26
 D-32758 Detmold
 Germany

www.weidmueller.com

Technical data

Classifications

| | | | |
|-------------|-------------|-------------|-------------|
| ETIM 6.0 | EC000899 | ETIM 7.0 | EC000899 |
| ETIM 8.0 | EC000899 | ECLASS 9.0 | 27-14-11-16 |
| ECLASS 9.1 | 27-14-11-16 | ECLASS 10.0 | 27-14-11-16 |
| ECLASS 11.0 | 27-14-11-16 | | |

Approvals

Approvals



| | |
|-----------------------|---------|
| ROHS | Conform |
| UL File Number Search | E60693 |

Downloads

| | |
|---|---|
| Approval/Certificate/Document of Conformity | CB Testreport CB Certificate CB Test certificate EAC certificate DNVGL certificate Lloyds Register Certificate MARITREG Certificate CE Declaration of Conformity CE Declaration of Conformity all terminals |
| Engineering Data | CAD data – STEP |
| Engineering Data | EPLAN, WSCAD, Zuken E3.S |
| User Documentation | StorageConditionsTerminalBlocks Marking options on WSI 6 terminal blocks |
| Catalogues | Catalogues in PDF-format |
| Brochures | |

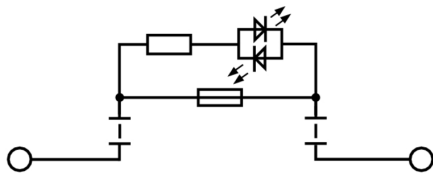
Data sheet

WSI 6/LD 60-150V DC/AC

Weidmüller Interface GmbH & Co. KG
Klingenbergstraße 26
D-32758 Detmold
Germany

www.weidmueller.com

Drawings



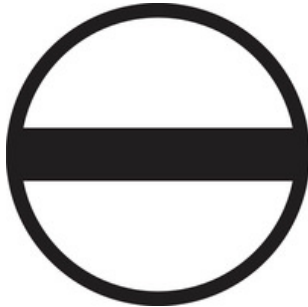
WSI 6/LD 60-150V DC/AC

Weidmüller Interface GmbH & Co. KG
 Klingenbergstraße 26
 D-32758 Detmold
 Germany

www.weidmueller.com

Accessories

Slotted screwdriver

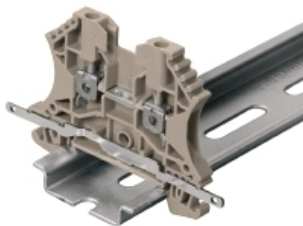


Slotted screwdriver with rounded blade SD DIN 5265, ISO 2380/2, output to DIN 5264, ISO 2380/1. ChromTop tip, SoftFinish grip

General ordering data

| | | |
|------------|----------------------------|--------------------------|
| Type | SDS 0.8X4.0X100 | Version |
| Order No. | 9008340000 | Screwdriver, Screwdriver |
| GTIN (EAN) | 4032248056293 | |
| Qty. | 1 pc(s). | |

Shielding connection



Shielding and earthing

Our protective earth conductor and shielding terminals featuring different connection technologies allow you to effectively protect both people and equipment from interference, such as electrical or magnetic fields. A comprehensive range of accessories rounds off our range.

General ordering data

| | | |
|------------|----------------------------|----------------------|
| Type | LS 2.8 WDU2.5-10 | Version |
| Order No. | 1056400000 | W-Series, Shield bus |
| GTIN (EAN) | 4008190036454 | |
| Qty. | 100 pc(s). | |

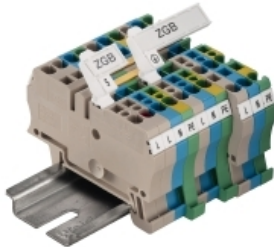
WSI 6/LD 60-150V DC/AC

Weidmüller Interface GmbH & Co. KG
 Klingenbergstraße 26
 D-32758 Detmold
 Germany

www.weidmueller.com

Accessories

ZGB pivotable group tag holder



The ZGB 15 is a hinged group tag carrier. The tag carrier can hold the dekafix 5, WS 12/5 terminal markers or the inlay tag ESO 15.

The ZGB 30 is a hinged group tag carrier. The tag carrier can hold the dekafix 5, WS 12/5 terminal markers or the inlay tag ESO 7.

Inlay tags and protective strips can be found under "Accessories".

General ordering data

| | | |
|------------|----------------------------|---|
| Type | ZGB 30 | Version |
| Order No. | 1611930000 | Terminal markers, Terminal marker, 32 x 7 mm, Pitch in mm (P): 5.00 |
| GTIN (EAN) | 4008190002251 | Weidmueller, white |
| Qty. | 20 pc(s). | |
| Type | ZGB 15 | Version |
| Order No. | 1636530000 | Terminal markers, Terminal marker, 15 x 7 mm, Pitch in mm (P): 5.00 |
| GTIN (EAN) | 4008190297053 | Weidmueller, white |
| Qty. | 20 pc(s). | |

QL mounting screws



Screwable cross-connections are easy to mount and de mount. Thanks to the big contact surface, even high currents can be transmitted with maximum contact reliability.

General ordering data

| | | |
|------------|----------------------------|--------------------------|
| Type | SS M3 D 128-A 3 | Version |
| Order No. | 0164400000 | Accessories, Lock washer |
| GTIN (EAN) | 4008190035914 | |
| Qty. | 50 pc(s). | |

WSI 6/LD 60-150V DC/AC

Weidmüller Interface GmbH & Co. KG

Klingenbergstraße 26

D-32758 Detmold

Germany

www.weidmueller.com

Accessories

Blank



WS markers are the perfect match for the W-series connectors. Thanks to their system compatibility, the WS tags can also be used with the I-series and the Z-series. The large marking surfaces do not only permit long character strings but also multi-line text. WS markers are ideal for labels with long, customised character strings. Thanks to the proven MultiCard format, printing with PrintJet CONNECT oder/or Plotter is possible.

- Can be fitted in strips or individually
- Markers in proven MultiCard format

For custom printing: Please send us a file of our labeling software M-Print PRO or M-Print PRO Online (without installation) for your labeling specifications.

General ordering data

| Type | WS 12/5 MC NE WS | Version |
|------------|----------------------------|--|
| Order No. | 1609860000 | WS, Terminal marker, 12 x 5 mm, Pitch in mm (P): 5.00 Weidmueller, |
| GTIN (EAN) | 4008190203481 | Allen-Bradley, white |
| Qty. | 720 pc(s). | |

Blank



WS markers are the perfect match for the W-series connectors. Thanks to their system compatibility, the WS tags can also be used with the I-series and the Z-series. The large marking surfaces do not only permit long character strings but also multi-line text. WS markers are ideal for labels with long, customised character strings. Thanks to the proven MultiCard format, printing with PrintJet CONNECT oder/or Plotter is possible.

- Can be fitted in strips or individually
- Markers in proven MultiCard format

For custom printing: Please send us a file of our labeling software M-Print PRO or M-Print PRO Online (without installation) for your labeling specifications.

General ordering data

| Type | WS 12/6.5 MC NE WS | Version |
|------------|----------------------------|---|
| Order No. | 1609920000 | WS, Terminal marker, 12 x 6.5 mm, Pitch in mm (P): 6.50 |
| GTIN (EAN) | 4008190203511 | Weidmueller, Allen-Bradley, white |
| Qty. | 540 pc(s). | |

WSI 6/LD 60-150V DC/AC

Weidmüller Interface GmbH & Co. KG

Klingenbergstraße 26

D-32758 Detmold

Germany

www.weidmueller.com

Accessories

WS 12/6.5



WS/ DEK

MultiMark terminal markers use an innovative composite material made from two components. The hard base contour of the marker snaps securely into the connector. The elastic surface finish makes the marker easy to mount. This specially punched material enables the strips to be stretched to accommodate the slight variations in spacing that tend to add up, especially with long terminal blocks. Another advantage: the excellent printability of the surface material guarantees durable and wear-resistant labelling. A print resolution of 300 dpi also produces a very legible script.

Your benefits with MultiMark

- Firm hold and durable printing
- Continuous strips save installation time
- Easy mounting thanks to an innovative composite material
- Large label field for optimal legibility
- High flexibility thanks to manufacturer independence

General ordering data

| | | | |
|------------|----------------------------|--|--|
| Type | WS 12/6.5 MM WS | Version | |
| Order No. | 2619930000 | WS, Terminal marker, 12 x 6.5 mm, Weidmueller, white | |
| GTIN (EAN) | 4050118626155 | | |
| Qty. | 600 pc(s). | | |

WSI 6/LD 60-150V DC/AC

Weidmüller Interface GmbH & Co. KG
 Klingenbergstraße 26
 D-32758 Detmold
 Germany

www.weidmueller.com

Accessories

WS 12/5



WS/ DEK

MultiMark terminal markers use an innovative composite material made from two components. The hard base contour of the marker snaps securely into the connector. The elastic surface finish makes the marker easy to mount. This specially punched material enables the strips to be stretched to accommodate the slight variations in spacing that tend to add up, especially with long terminal blocks. Another advantage: the excellent printability of the surface material guarantees durable and wear-resistant labelling. A print resolution of 300 dpi also produces a very legible script.

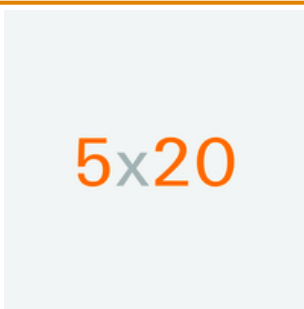
Your benefits with MultiMark

- Firm hold and durable printing
- Continuous strips save installation time
- Easy mounting thanks to an innovative composite material
- Large label field for optimal legibility
- High flexibility thanks to manufacturer independence

General ordering data

| | | |
|------------|----------------------------|--|
| Type | WS 12/5 MM WS | Version |
| Order No. | 2007190000 | WS, Terminal marker, 12 x 5 mm, Weidmueller, white |
| GTIN (EAN) | 4050118392036 | |
| Qty. | 800 pc(s). | |

5x20



For protection against overcurrent, we offer cartridge fuse with dimensions 5x20 mm in sizes from 100 mA to 6.3 A.

General ordering data

| | | |
|------------|---------------------------|-------------------------|
| Type | G 20/0.50A/F | Version |
| Order No. | 043060000 | Active components, Fuse |
| GTIN (EAN) | 4008190046835 | |
| Qty. | 10 pc(s). | |
| Type | G 20/0.25A/F | Version |
| Order No. | 043050000 | Active components, Fuse |
| GTIN (EAN) | 4008190153991 | |
| Qty. | 10 pc(s). | |

WSI 6/LD 60-150V DC/AC

Weidmüller Interface GmbH & Co. KG
Klingenbergstraße 26
D-32758 Detmold
Germany

www.weidmueller.com

Accessories

| | | |
|------------|----------------------------|-------------------------|
| Type | G 20/2.00A/F | Version |
| Order No. | 0430900000 | Active components, Fuse |
| GTIN (EAN) | 4008190123567 | |
| Qty. | 10 pc(s). | |

| | | |
|------------|----------------------------|-------------------------|
| Type | G 20/1.00A/F | Version |
| Order No. | 0430700000 | Active components, Fuse |
| GTIN (EAN) | 4008190093877 | |
| Qty. | 10 pc(s). | |

QB



Screwable cross-connections are easy to mount and de mount. Thanks to the big contact surface, even high currents can be transmitted with maximum contact reliability.

General ordering data

| | | |
|------------|----------------------------|---|
| Type | QB 58/8/15 | Version |
| Order No. | 0545400000 | SAK Series, Cross-connector, for cross-connection link, Number of |
| GTIN (EAN) | 4008190028794 | poles: 58 |
| Qty. | 10 pc(s). | |

| | | |
|------------|----------------------------|---|
| Type | QB 58/8/9/WI | Version |
| Order No. | 0545300000 | SAK Series, Cross-connector, for cross-connection link, Number of |
| GTIN (EAN) | 4008190125080 | poles: 58 |
| Qty. | 10 pc(s). | |

W-Series



Test adapters and test plugs are used for the electrical connection between terminal blocks and the test equipment. In this way, an electrical contact can be established in the wired state and measurements can be done easily.

General ordering data

| | | |
|------------|----------------------------|------------------------|
| Type | WTA 7 WSI6 | Version |
| Order No. | 1650210000 | W-Series, Test adapter |
| GTIN (EAN) | 4008190296872 | |
| Qty. | 25 pc(s). | |

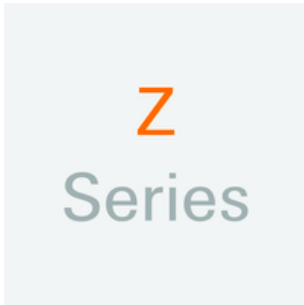
WSI 6/LD 60-150V DC/AC

Weidmüller Interface GmbH & Co. KG
 Klingenbergstraße 26
 D-32758 Detmold
 Germany

www.weidmueller.com

Accessories

Z-Series



Weidmüller's range of products includes end brackets that guarantee a permanent, reliable mounting on the terminal rail and prevent sliding. Versions with and without screws are available. The end brackets include marking options, also for group markers, and also a test plug holder.

General ordering data

| | | |
|------------|----------------------------|---------------------------------|
| Type | ZST 1 | Version |
| Order No. | 1269070000 | Accessories, Accessories holder |
| GTIN (EAN) | 4050118094091 | |
| Qty. | 25 pc(s). | |

Blank



The Dekafix (DEK) marker is the universal marker for all conductor and plug-in connectors as well as for electronic sub-assemblies. The system is ideal for short number sequences and covers a wide range of ready-printed markers.

Strips for fast installation in only one work step. The printing is easy to read, rich in contrast and available in various widths.

- Large range of ready-to-use markers
- Strips for fast installation
- Terminal markers, suitable for all Weidmüller cable connectors
- Available as blank MultiCard or with standard printing

For custom printing: Please send us a file of our labeling software M-Print PRO or M-Print PRO Online (without installation) for your labeling specifications.

General ordering data

| | | |
|------------|----------------------------|---|
| Type | DEK 5/8 MC NE WS | Version |
| Order No. | 1856740000 | Dekafix, Terminal marker, 5 x 8 mm, Pitch in mm (P): 8.00 |
| GTIN (EAN) | 4032248400850 | Weidmueller, white |
| Qty. | 800 pc(s). | |

WSI 6/LD 60-150V DC/AC

Weidmüller Interface GmbH & Co. KG
 Klingenbergstraße 26
 D-32758 Detmold
 Germany

www.weidmueller.com

Accessories

2.5-10 mm²

2.5-10
mm²

End plates are fitted to the open side of the last modular terminal before the end bracket. The use of an end plate ensures the function of the modular terminal and the specified rated voltage. It guarantees protection against contact with live parts and makes the final terminal finger-proof.

General ordering data

| | | |
|------------|----------------------------|--------------------------------------|
| Type | WAP 16+35 WTW 2.5-10 | Version |
| Order No. | 1050100000 | W-Series, End plate, Partition plate |
| GTIN (EAN) | 4008190079901 | |
| Qty. | 20 pc(s). | |
| Type | WAP 2.5-10 | Version |
| Order No. | 1050000000 | W-Series, End plate |
| GTIN (EAN) | 4008190103149 | |
| Qty. | 50 pc(s). | |

W-Series

W
Series

Weidmüller's range of products includes end brackets that guarantee a permanent, reliable mounting on the terminal rail and prevent sliding. Versions with and without screws are available. The end brackets include marking options, also for group markers, and also a test plug holder.

General ordering data

| | | |
|------------|----------------------------|-----------------------|
| Type | WEW 35/2 | Version |
| Order No. | 1061200000 | W-Series, End bracket |
| GTIN (EAN) | 4008190030230 | |
| Qty. | 50 pc(s). | |

WSI 6/LD 60-150V DC/AC

Weidmüller Interface GmbH & Co. KG
 Klingenbergstraße 26
 D-32758 Detmold
 Germany

www.weidmueller.com

Accessories

DEK 5/8



WS/ DEK

MultiMark terminal markers use an innovative composite material made from two components. The hard base contour of the marker snaps securely into the connector. The elastic surface finish makes the marker easy to mount. This specially punched material enables the strips to be stretched to accommodate the slight variations in spacing that tend to add up, especially with long terminal blocks. Another advantage: the excellent printability of the surface material guarantees durable and wear-resistant labelling. A print resolution of 300 dpi also produces a very legible script.

Your benefits with MultiMark

- Firm hold and durable printing
- Continuous strips save installation time
- Easy mounting thanks to an innovative composite material
- Large label field for optimal legibility
- High flexibility thanks to manufacturer independence

General ordering data

| | | | |
|------------|----------------------------|---------|--|
| Type | DEK 5/8 MM WS | Version | |
| Order No. | 2007130000 | | Dekafix, Terminal marker, 5 x 8 mm, Weidmueller, white |
| GTIN (EAN) | 4050118392012 | | |
| Qty. | 500 pc(s). | | |

X-ON Electronics

Largest Supplier of Electrical and Electronic Components

Click to view similar products for [DIN Rail Terminal Blocks](#) category:

Click to view products by [Weidmuller](#) manufacturer:

Other Similar products are found below :

[00110420202](#) [8WA1011-1BH23](#) [8WA1011-1EF20](#) [91.010](#) [9102100000](#) [91.040](#) [9123140000](#) [9123140001](#) [RBO 5-T-B-HEX](#) [1333564](#) [DP25-GY-ND](#) [1431306](#) [1433306](#) [HSL-TB64-DIN](#) [90.070](#) [91.020](#) [912314](#) [260-301_NR](#) [2757571](#) [280-331](#) [280-560](#) [280-564](#) [281-611/281-542](#)
[281-673/281-411](#) [281-994](#) [283-317](#) [283-607](#) [2909798](#) [264-724](#) [264-726](#) [280-530](#) [280-555](#) [280-619](#) [281-610](#) [281-622/281-417](#) [284-317](#)
[284-601](#) [2907033](#) [3048496](#) [5542152](#) [35956](#) [USK 10](#) [102510](#) [1025100000](#) [5520682](#) [5607102](#) [EMH 25-ZE30](#) [591620-2](#) [UM 45-SEFE](#)
[M.NUT BK](#) [1-591651-1](#)