

## CH20M22 S PSCSC BL 2013

**Weidmüller Interface GmbH & Co. KG**

Klingenbergstraße 26

D-32758 Detmold

Germany

[www.weidmueller.com](http://www.weidmueller.com)

### Product image



#### Superior efficiency, flexibility and design - the "standard tailor-made fit"

When selecting a housing design, flexibility is a key factor. Other important criteria are: scalability, customised design, innovative functionality and cost efficiency. You need a choice which offers the maximum performance with the minimum overhead.

The CH20M22 modular electronics housing is the standard format from amongst the different housing widths. It has the optimal width for most typical electronics applications.

The entire system is characterized by excellence: outstanding scalability and flexibility, a high security level, innovative application functionality and a variety of practical details.

- **Quicker installation** with features such as "Wire ready" the universal multi-tool screw head
- **User-friendly operations:** with clear and permanent labelling and extra marking possibilities, integrated release clip or transparent cover
- **Maximum interference immunity** with ESD-compliant construction featuring deeply overlapping module joint edges made from high-performance plastic
- **High operational reliability** with the unique Auto-Set coding system and featuring double-sided touch protection on the pin header and socket blocks

CH20M - a compact name for the most flexible system available on the market. It doesn't just stand for "Component Housing IP20 Modular".

CH20M also stands for efficiency and innovation throughout design, production and use.

#### General ordering data

|   |   |
|---|---|
| Version   | Modular housing, OMNIMATE Housing - series CH20M blue, Width: 22.5 mm |
| Order No.   | <a href="#">1070620000</a>  |
| Type  | CH20M22 S PSCSC BL 2013   |
| GTIN (EAN)  | 4032248826810   |
| Qty.  | 10 pc(s).   |
| Information regarding whole assembly, see referenced articles | <a href="#">1104450000</a>  |

Creation date January 20, 2022 6:30:19 AM CET

Catalogue status 14.01.2022 / We reserve the right to make technical changes.

## CH20M22 S PSCSC BL 2013

**Weidmüller Interface GmbH & Co. KG**

Klingenbergstraße 26

D-32758 Detmold

Germany

www.weidmueller.com

## Technical data

### Dimensions and weights

|            |          |                 |            |
|------------|----------|-----------------|------------|
| Height     | 22.83 mm | Height (inches) | 0.899 inch |
| Width      | 22.5 mm  | Width (inches)  | 0.886 inch |
| Net weight | 9.3 g    |                 |            |

### Temperatures

|                             |                  |          |   |
|-----------------------------|------------------|----------|---|
| Operating temperature range | -40 °C... 120 °C | Humidity | 5 - 93% rel. humidity, Tu = 40°C, no condensation |
|-----------------------------|------------------|----------|---|

### Component Properties

|   |    |                             |   |
|---|----|-----------------------------|---|
| Cut out as preparation for functional port integrated | No | Number of connection levels | 1 |
| Number of cooling levels                              | 2  | Number of poles, max.       | 4 |

### General data

|                      |      |                        |                         |
|----------------------|------|------------------------|-------------------------|
| Colour               | blue | Colour chart (similar) | RAL 5012                |
| Encapsulation option | No   | Protection degree      | IP20 in installed state |

### Material data

|                                  |           |                           |             |
|----------------------------------|-----------|---------------------------|-------------|
| Comparative Tracking Index (CTI) | 600 ≤ CTI | Insulating material       | PA 66 GF 30 |
| Insulating material group        | I         | UL 94 flammability rating | V-0         |

### Classifications

|             |             |             |             |
|-------------|-------------|-------------|-------------|
| ETIM 6.0    | EC001031    | ETIM 7.0    | EC001031    |
| ETIM 8.0    | EC001031    | ECLASS 9.0  | 27-18-27-90 |
| ECLASS 9.1  | 27-18-27-90 | ECLASS 10.0 | 27-18-27-92 |
| ECLASS 11.0 | 27-18-27-92 |             |             |

### Approvals

|      |         |
|------|---------|
| ROHS | Conform |
|------|---------|

### Downloads

|                  |  |
|------------------|--|
| Engineering Data | <a href="#">CAD data – STEP</a>          |
| Engineering Data | <a href="#">EPLAN</a>                    |
| Catalogues       | <a href="#">Catalogues in PDF-format</a> |

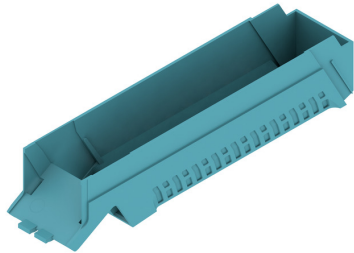
**CH20M22 S PSCSC BL 2013**

**Weidmüller Interface GmbH & Co. KG**  
Klingenbergstraße 26  
D-32758 Detmold  
Germany

[www.weidmueller.com](http://www.weidmueller.com)

**Drawings**

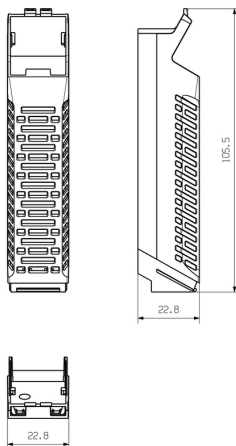
**Product image**



**Product image**



**Dimensioned drawing**



## CH20M22 S PSCSC BL 2013

**Weidmüller Interface GmbH & Co. KG**  
 Klingenbergstraße 26  
 D-32758 Detmold  
 Germany

www.weidmueller.com

## Accessories

## CH20M AD SHL 5.00/04 - Side element cover for CH20M22, CH20M45, CH20M67

**The perfect platform for function and innovation:**

Innovative function electronics require intelligent "packages" in order to integrate perfectly in the system environment.

The ongoing development and consistent expansion of the Weidmüller electronics housing portfolio provides a secure platform for future electronics applications whatever the design or intended use. CAD data for PCBs is provided for all enclosures. Screw and tension clamp terminals are available for all connections.

The consistent synergy between design, connection system and functionality lays the perfect foundation stone for electronics systems designed in line with market and application requirements.

Function, shape and manufacturing quality combine into a single logical unit that provides maximum reliability and operating comfort for the user.

**General ordering data**

|            |                             |   |
|------------|-----------------------------|---|
| Type       | CH20M AD SHL 5.00/04 LG ... | Version   |
| Order No.  | <a href="#">1432890000</a>  | Hood, OMNIMATE Housing - series CH20M Light Grey, Width: 22.5 |
| GTIN (EAN) | 4050118237641               | mm  |
| Qty.       | 50 pc(s).                   |   |
| Type       | CH20M AD SHL 5.00/04 GG ... | Version   |
| Order No.  | <a href="#">1413740000</a>  | Hood, OMNIMATE Housing - series CH20M Graphite grey, Width:   |
| GTIN (EAN) | 4050118241648               | 22.5 mm   |
| Qty.       | 50 pc(s).                   |   |
| Type       | CH20M AD SHL 5.00/04 AG ... | Version   |
| Order No.  | <a href="#">1472830000</a>  | Hood, OMNIMATE Housing - series CH20M Agate grey, Width: 22.5 |
| GTIN (EAN) | 4050118279429               | mm  |
| Qty.       | 50 pc(s).                   |   |
| Type       | CH20M AD SHL 5.00/04 BK ... | Version   |
| Order No.  | <a href="#">1221310000</a>  | Hood, OMNIMATE Housing - series CH20M black, Width: 22.5 mm   |
| GTIN (EAN) | 4050118004830               |   |
| Qty.       | 50 pc(s).                   |   |

## X-ON Electronics

Largest Supplier of Electrical and Electronic Components

*Click to view similar products for [Pluggable Terminal Blocks](#) category:*

*Click to view products by [Weidmuller](#) manufacturer:*

Other Similar products are found below :

[57.510.0053](#) [MC 1.5/ 6-ST-3.5 GY AU](#) [734-104](#) [734-302](#) [8-141-P](#) [8426620000](#) [860505](#) [860516](#) [860810](#) [GBPACX-12](#) [93.731.4953.0](#) [PV05-5,08-K](#) [PVP02-5,00](#) [PVP03-3,50](#) [PVP04-3,50](#) [PVS02-5,00](#) [1-1986160-3](#) [1377680000](#) [1531000000](#) [1546228-5](#) [ELFH16150](#) [ELFP03110](#) [ELFP10210](#) [ELFT06250](#) [ELVP03100](#) [1700101](#) [1700410](#) [1700425](#) [1702246](#) [1705229](#) [1710175](#) [1714537](#) [1717806](#) [1719600](#) [1728941](#) [1734692](#) [1734795](#) [1736036](#) [1740194](#) [1740291](#) [1740628](#) [1740990](#) [1746952](#) [1750207](#) [1752441](#) [1752865](#) [1754115](#) [1754144](#) [1756913](#) [1760051](#)