

P-series PRV 8 SW 35X15 WS/RT

Weidmüller Interface GmbH & Co. KG
 Klingenbergstraße 26
 D-32758 Detmold
 Germany
 Fon: +49 5231 14-0
 Fax: +49 5231 14-292083
 www.weidmueller.com

Product image



Save space by connecting with these multi-tier terminals with PUSH IN connection technology.

The product line includes the four-channel, eight-channel and also the innovative sixteen-channel feed-through terminal blocks. The four-channel and eight-channel terminals are also available as potential distribution terminals.

The benefits:

- More than 1700 signals per metre can be distributed with the 16-channel terminal block.
- Red and white actuators make it easier to assign wires to their terminal points.
- The PUSH IN connections make wiring quick and convenient.

General ordering data

Type	PRV 8 SW 35X15 WS/RT
Order No.	1173780000
Version	P-series, Patch distributor, Rated cross-section: 1.5 mm ² , Number of levels: 8, Number of connections: 32, Colour: Black, Colour of operational elements: white-red, TS 35 x 15
GTIN (EAN)	4032248966318
Qty.	20 pc(s).

**P-series
PRV 8 SW 35X15 WS/RT**

Weidmüller Interface GmbH & Co. KG
 Klingenbergstraße 26
 D-32758 Detmold
 Germany
 Fon: +49 5231 14-0
 Fax: +49 5231 14-292083
 www.weidmueller.com

Technical data**Dimensions and weights**

Width	9.2 mm	Width (inches)	0.362 inch
Height	120 mm	Height (inches)	4.724 inch
Depth	73 mm	Depth (inches)	2.874 inch
Net weight	47.1 g		

Temperatures

Storage temperature, max.	70 °C	Storage temperature, min.	-25 °C
Storage temperature	-25 °C...70 °C	Temperature range, installation, min.	-10 °C
Continuous operating temp., min.	-50 °C	Continuous operating temp., max.	130 °C
Temperature range, installation, max.	40 °C		

Material data

Material	Polycarbonate	Material of operational elements	PBT
Colour	Black	Colour of operational elements	white-red
UL 94 flammability rating	V-0		

System specifications

Version	PUSH IN connection, One end without connector	End cover plate required	Yes
Number of levels	8	Number of clamping points per level	4
Number of potentials per tier	8	Levels cross-connected internally	No
PE connection	No	Rail	TS 35 x 15

Additional technical data

Type of mounting	Snap-on
------------------	---------

CSA rating data

Certificate No. (CSA)	200039-2406089	Current size B (CSA)	10 A
Current size D (CSA)	10 A	Voltage size B (CSA)	300 V
Voltage size D (CSA)	300 V	Wire cross section max. (CSA)	16 AWG
Wire cross section min. (CSA)	26 AWG		

**P-series
PRV 8 SW 35X15 WS/RT**

Weidmüller Interface GmbH & Co. KG
 Klingenbergstraße 26
 D-32758 Detmold
 Germany
 Fon: +49 5231 14-0
 Fax: +49 5231 14-292083
 www.weidmueller.com

Technical data**Conductors for clamping (rated connection)**

Blade size	0.6 x 3.5 mm	Clamping range, max.	1.5 mm ²
Clamping range, min.	0.13 mm ²	Connection cross-section, stranded, max.	1.5 mm ²
Connection cross-section, stranded, min.	0.5 mm ²	Connection direction	Inclined / angled
Number of connections	32	Stripping length	10 mm
Type of connection	PUSH IN	Wire connection cross section AWG, max.	AWG 16
Wire connection cross section AWG, min.	AWG 24	Wire connection cross section, finely stranded, max.	1.5 mm ²
Wire connection cross-section, finely stranded with wire-end ferrules DIN 46228/1, max.	1.5 mm ²	Wire connection cross-section, finely stranded with wire-end ferrules DIN 46228/1, min.	0.5 mm ²
Wire connection cross-section, finely stranded with wire-end ferrules DIN 46228/4, max.	1.5 mm ²	Wire connection cross-section, finely stranded with wire-end ferrules DIN 46228/4, min.	0.5 mm ²
Wire connection cross-section, finely stranded, min.	0.5 mm ²	Wire connection cross-section, solid core, max.	1.5 mm ²
Wire connection cross-section, solid core, min.	0.5 mm ²		

Rating data

Rated cross-section	1.5 mm ²	Rated voltage	250 V
Rated current	8 A	Current at maximum wires	10 A
Standards	IEC 60947-7-1	Volume resistance according to IEC 60947-7-x	1.83 mΩ
Power loss in accordance with IEC 60947-7-x	0.56 W	Rated impulse withstand voltage	4 kV
Pollution severity	3	Surge voltage category	III

UL rating data

Certificate No. (cURus)	E60693	Current size B (cURus)	10 A
Current size D (cURus)	10 A	Voltage size B (cURus)	300 V
Voltage size D (cURus)	300 V	Wire cross section max. (cURus)	16 AWG
Wire cross section min. (cURus)	26 AWG		

Classifications

ETIM 6.0	EC000897	ETIM 7.0	EC000897
eClass 9.0	27-14-11-20	eClass 9.1	27-14-11-20
eClass 10.0	27-14-11-20		

Approvals

Approvals



ROHS

Conform

Data sheet**P-series
PRV 8 SW 35X15 WS/RT**

Weidmüller Interface GmbH & Co. KG
Klingenbergstraße 26
D-32758 Detmold
Germany
Fon: +49 5231 14-0
Fax: +49 5231 14-292083
www.weidmueller.com

Technical data**Downloads**

Approval/Certificate/Document of Conformity	DE_PT1441_20160418_326_ISSUE01.pdf
Brochure/Catalogue	CAT 1 TERM 16/17 EN
Engineering Data	WSCAD, Zuken E3.S
Engineering Data	STEP
User Documentation	Beipackzettel_PRV_PPV.pdf StorageConditionsTerminalBlocks

Safety note

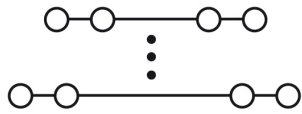
Safety notice	Safety Information
---------------	------------------------------------

Data sheet

P-series
PRV 8 SW 35X15 WS/RT

Weidmüller Interface GmbH & Co. KG
Klingenbergstraße 26
D-32758 Detmold
Germany
Fon: +49 5231 14-0
Fax: +49 5231 14-292083
www.weidmueller.com

Drawings



**P-series
PRV 8 SW 35X15 WS/RT**

Weidmüller Interface GmbH & Co. KG
 Klingenbergstraße 26
 D-32758 Detmold
 Germany
 Fon: +49 5231 14-0
 Fax: +49 5231 14-292083
 www.weidmueller.com

Accessories

Screwdrivers



Always the right tools:

Weidmüller screwdrivers are the result of a consistent grip concept which takes into account both the human hand and the different requirements when working. The right blade for every screw - with four different handle sizes

The advantages are obvious:

- User-friendly: ergonomic handle arrangement for effortless working progress
- Optimised connections: compatible blade and perfect handle size for maximum torque
- Reliable: even easier operation for even quicker wiring

The result: efficient, professional working progress.

General ordering data

Type	SDS 0.6X3.5X100	Version
Order No.	9008330000	Screwdriver, Blade width (B): 3.5 mm, Blade length: 100 mm, Blade thickness (A): 0.6 mm
GTIN (EAN)	4032248056286	
Qty.	1 pc(s).	

Blank



WS markers are the perfect match for the W-series connectors. Thanks to their system compatibility, the WS tags can also be used with the I-series and the Z-series. The large marking surfaces do not only permit long character strings but also multi-line text. WS markers are ideal for labels with long, customised character strings. Thanks to the proven MultiCard format, printing with laser printer, PrintJet ADVANCED, plotter or MC-Mobilo is possible.

- Can be fitted in strips or individually
- Markers in proven MultiCard format

For custom printing: Please send us a file of our labeling software M-Print PRO or M-Print PRO Online (without installation) for your labeling specifications.

General ordering data

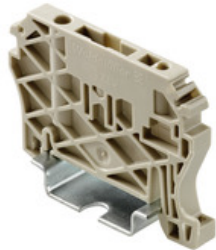
Type	WS 7.8/9.2 PLUS MC NE GR	Version
Order No.	1208970000	WS, Terminal marker, 7.8 x 9.2 mm, Pitch in mm (P): 9.20
GTIN (EAN)	4032248990092	Weidmueller, grey
Qty.	360 pc(s).	

P-series PRV 8 SW 35X15 WS/RT

Weidmüller Interface GmbH & Co. KG
 Klingenbergstraße 26
 D-32758 Detmold
 Germany
 Fon: +49 5231 14-0
 Fax: +49 5231 14-292083
 www.weidmueller.com

Accessories

End brackets



Spring connection with tension clamp Technology

Tension clamp technology is a universal contact system for all common conductor connection types. Its fantastic level of flexibility makes the tension clamp a profitable alternative connection.

General ordering data

Type	ZEW 35/2 SW	Version
Order No.	1162610000	Z-series, End bracket
GTIN (EAN)	4032248962716	
Qty.	20 pc(s).	

Partition plates



DCS marshalling

Our innovative PRV terminal blocks for DCS marshalling featuring a PUSH IN connection and our multifunctional DCS marshalling terminals featuring a screw connection (WMF) not only save space in the panel; they also guarantee more effective signal transmission in process control systems.

General ordering data

Type	TW PRV8 0-7	Version
Order No.	1230090000	P-series, Separation plate, grey, 2 mm, Printed 0-7, horizontally
GTIN (EAN)	4050118013917	
Qty.	10 pc(s).	
Type	TW PRV8	Version
Order No.	1173670000	P-series, Separation plate, grey, 2 mm, Unprinted
GTIN (EAN)	4032248966141	
Qty.	10 pc(s).	
Type	TW PRV8 1-8	Version
Order No.	1230080000	P-series, Separation plate, grey, 2 mm, Printed 1-8, horizontally
GTIN (EAN)	4050118013740	
Qty.	10 pc(s).	
Type	TW PRV8 A-H	Version
Order No.	1230110000	P-series, Separation plate, grey, 2 mm, Printed A-H, horizontally
GTIN (EAN)	4050118013900	
Qty.	10 pc(s).	

**P-series
PRV 8 SW 35X15 WS/RT**

Weidmüller Interface GmbH & Co. KG
 Klingenbergstraße 26
 D-32758 Detmold
 Germany
 Fon: +49 5231 14-0
 Fax: +49 5231 14-292083
 www.weidmueller.com

Accessories
Cross-connection for base with PUSH IN connection


Weidmüller RIDERSERIES relays guarantee a noise-free, decoupled signal transmission in industrial automation concepts.

The are compact, quickly installed and can be fitted in the tightest of spaces.

- 1 or 2 CO contacts
- optionally: AC or DC coils
- Relay optionally with integrated status display and/or free-wheel diode and optionally combined with a test button
- pluggable LED modules with protective functions
- Metal and plastic retaining clips
- Base with screw / PUSH IN connection

General ordering data

Type	SRC-I QV P	Version
Order No.	8870840000	RIDERSERIES RCI, Cross-connector
GTIN (EAN)	4032248631681	
Qty.	10 pc(s).	

End plates

DCS marshalling

Our innovative PRV terminal blocks for DCS marshalling featuring a PUSH IN connection and our multifunctional DCS marshalling terminals featuring a screw connection (WMF) not only save space in the panel; they also guarantee more effective signal transmission in process control systems.

General ordering data

Type	PAP PRV/PPV8 BL	Version
Order No.	1268000000	P-series, End plate, blue, 3 mm
GTIN (EAN)	4032248113040	
Qty.	10 pc(s).	
Type	PAP PRV/PPV8 SW	Version
Order No.	1173720000	P-series, End plate, Black, 3 mm
GTIN (EAN)	4032248966158	
Qty.	10 pc(s).	
Type	PAP PRV/PPV8 GR	Version
Order No.	1211460000	P-series, End plate, grey, 3 mm
GTIN (EAN)	4032248113446	
Qty.	10 pc(s).	

Data sheet

**P-series
PRV 8 SW 35X15 WS/RT**

Weidmüller Interface GmbH & Co. KG
 Klingenbergstraße 26
 D-32758 Detmold
 Germany
 Fon: +49 5231 14-0
 Fax: +49 5231 14-292083
 www.weidmueller.com

Accessories

Marking holder



DCS marshalling

Our innovative PRV terminal blocks for DCS marshalling featuring a PUSH IN connection and our multifunctional DCS marshalling terminals featuring a screw connection (WMF) not only save space in the panel; they also guarantee more effective signal transmission in process control systems.

General ordering data

Type	BZT PRV8 SW 35X15	Version
Order No.	1173570000	P-series, Marker holder, Black, Number of levels: 8, TS 35 x 15
GTIN (EAN)	4032248966004	
Qty.	20 pc(s).	
Type	BZT PRV8 BL 35X15	Version
Order No.	1267950000	P-series, Marker holder, blue, Number of levels: 8, TS 35 x 15
GTIN (EAN)	4032248113200	
Qty.	20 pc(s).	

X-ON Electronics

Largest Supplier of Electrical and Electronic Components

Click to view similar products for [DIN Rail Terminal Blocks](#) category:

Click to view products by [Weidmuller](#) manufacturer:

Other Similar products are found below :

[1045932](#) [00110420202](#) [00110430402](#) [5724.2/L](#) [592808-3](#) [CTS25U/BL](#) [CTS2.5U-N/Y](#) [91.010](#) [91.040](#) [DP25-GY-ND](#) [15288](#) [90.070](#) [90.905](#)
[91.001](#) [91.020](#) [91.201](#) [91.340](#) [2713793](#) [2757571](#) [280-331](#) [283-317](#) [283-607](#) [2909044](#) [2909798](#) [29-2052](#) [SRT2-OD08CL-1](#)
[CDL4U\(E\)MOV](#) [2757801](#) [2794660](#) [284-317](#) [2890975](#) [2907033](#) [3048496](#) [CTS2.5U-N/O](#) [5542152](#) [5602077](#) [0709880](#) [5520682](#) [5605444](#)
[5607102](#) [EPUSC](#) [SRT2-OD16P](#) [2901288](#) [591620-2](#) [1-591651-1](#) [NRA37-1/2](#) [592814-1](#) [592814-3](#) [SRT2-ID16P](#) [NRA37-12](#)