

HDC 24B SDLU 2PG21G

Weidmüller Interface GmbH & Co. KG

Klingenbergstraße 26

D-32758 Detmold

Germany

www.weidmueller.com



The special die-cast alloy and the multi-layered surface sealing provide complete protection for the HDC housings.

The cleverly designed interlock system is manufactured from stainless steel. This guarantees a long lifespan with high resistance to corrosion and impact.

The housing interlock system provides integrated safety. Our unique, patented spring system provides the housing interlock with a secure grip and prevents accidental opening.

The laser marking allows for easy and quick identification. Each housing is permanently labelled with a laser marking so that each product can be quickly designated and positioned.

Weidmüller RockStar® IP 65 / NEMA Type 4X housings - your first choice for industrial housings with IP 65 protection.

General ordering data

| | |
|------------|--|
| Version | HDC enclosures, Size: 8, Protection degree: IP65 (in plugged condition), Base housing, End-locking clamp, lower side, Standard, with cover, Size of cable entries: PG 21 |
| Order No. | 1214500000 |
| Type | HDC 24B SDLU 2PG21G |
| GTIN (EAN) | 4008190153021 |
| Qty. | 1 pc(s). |

HDC 24B SDLU 2PG21G

Weidmüller Interface GmbH & Co. KG

Klingenbergstraße 26

D-32758 Detmold

Germany

www.weidmueller.com

Technical data

Dimensions and weights

| | | | |
|-----------------------------|---------|----------------------------|------------|
| Height | 86 mm | Height (inches) | 3.386 inch |
| Width | 98.8 mm | Width (inches) | 3.89 inch |
| Mounting dimension - height | 45 mm | Mounting dimension - width | 132 mm |
| Net weight | 513 g | | |

Temperatures

| | |
|-------------------|-------------------|
| Limit temperature | -40 °C ... 125 °C |
|-------------------|-------------------|

Environmental Product Compliance

| | |
|------------|--|
| REACH SVHC | Lead 7439-92-1, Potassium perfluorobutane sulfonate 29420-49-3 |
| SCIP | e98b2b24-ba23-41bf-8d19-0dda3647412f |

| | | |
|---------------------|---------------------|-------------------------|
| Chemical resistance | Substance | Acetone |
| | Chemical resistance | Conditionally resistant |
| | Substance | Drilling oil |
| | Chemical resistance | Resistant |
| | Substance | Diesel |
| | Chemical resistance | Resistant |
| | Substance | Ethyl alcohol |
| | Chemical resistance | Resistant |
| | Substance | Transmission oil |
| | Chemical resistance | Resistant |
| | Substance | Hydraulic oil |
| | Chemical resistance | Resistant |
| | Substance | Coolant |
| | Chemical resistance | Resistant |
| | Substance | Petroleum benzine |
| | Chemical resistance | Resistant |
| | Substance | Sweat |
| | Chemical resistance | Resistant |
| | Substance | Premium gasoline |
| | Chemical resistance | Conditionally resistant |
| Substance | Water | |
| Chemical resistance | Resistant | |
| Substance | UV | |
| Chemical resistance | Unstable | |
| Substance | Ozone | |
| Chemical resistance | Unstable | |

Dimensions

| | | | |
|----------------------|-----------|----------------------|---------|
| Cable entry | w. thread | Height of base B1 | 5 mm |
| Height of housing B | 64 mm | Hole pitch length A2 | 132 mm |
| Total length housing | 120 mm | Width base C1 | 57.5 mm |
| Width housing C | 43 mm | | |

General data

| | | | |
|-----------------------------|-----------------------------|-----------------------|--|
| EMC housings | No | Housing main material | diecast aluminium |
| Material of locking element | Stainless steel, rust-proof | Protection class note | Protection class with secured cover: IP 65 |
| Protection degree | IP65 (in plugged condition) | Surface finish | Powder coating |

Creation date September 16, 2022 2:02:01 AM CEST

HDC 24B SDLU 2PG21G

Weidmüller Interface GmbH & Co. KG

Klingenbergstraße 26

D-32758 Detmold

Germany

www.weidmueller.com

Technical data

Version

| | | | |
|------------------------------|-------------------------------|--------------------------------|--------------|
| BG | 8 | Cable entry | w. thread |
| Clamp version | End-locking clamp | Colour (RAL) | RAL 7035 |
| Cover | with cover | Design | Standard |
| Design of cover | with cover | Design of housing | Base housing |
| Design of locking system | End-locking clamp, lower side | Internal thread | PG 21 |
| Number of cable entry on top | 0 | Number of cable entry sideways | 2 |
| Sealing | NBR | Size | 8 |
| Size of cable entries | PG 21 | Suitable for ModuPlug® | No |
| Top part/bottom part/lid | lower part | Type | Base housing |

Classifications

| | | | |
|-------------|-------------|-------------|-------------|
| ETIM 6.0 | EC000437 | ETIM 7.0 | EC000437 |
| ETIM 8.0 | EC000437 | ECLASS 9.0 | 27-44-02-02 |
| ECLASS 9.1 | 27-44-02-02 | ECLASS 10.0 | 27-44-02-02 |
| ECLASS 11.0 | 27-44-02-02 | ECLASS 12.0 | 27-44-02-02 |

Approvals

Approvals



| | |
|-------------------------|------------|
| ROHS | Conform |
| UL File Number Search | UL Website |
| Certificate No. (cURus) | E92202 |

Downloads

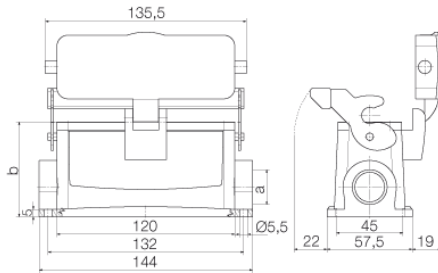
| | |
|---|--|
| Approval/Certificate/Document of Conformity | Manufacturer's declaration |
| Engineering Data | CAD data – STEP |
| Engineering Data | EPLAN, WSCAD |
| Product Change Notification | 20220214 Technical change to HDC housings 20220214 Technische Änderung bei HDC-Gehäusen |
| Technical Documentation | 1214500000_HDC_24B_SDLU_2PG21G_STP_Blatt_1.pdf |
| Catalogues | Catalogues in PDF-format |
| Brochures | FL FIELDWIRING EN FL FIELDWIRING EN |

HDC 24B SDLU 2PG21G

Weidmüller Interface GmbH & Co. KG
Klingenbergstraße 26
D-32758 Detmold
Germany

www.weidmueller.com

Drawings



X-ON Electronics

Largest Supplier of Electrical and Electronic Components

Click to view similar products for [Heavy Duty Power Connectors](#) category:

Click to view products by [Weidmuller](#) manufacturer:

Other Similar products are found below :

[6646058-2](#) [6646137-1](#) [6646138-1](#) [6646940-1](#) [6651091-1](#) [6651525-1](#) [6651529-1](#) [696475-1](#) [702-32-01109](#) [73080255059](#) [73080965046](#)
[7310205040001](#) [765-16-0080B](#) [765-18-0080D](#) [902-77-02113](#) [PS00/A0620/6300](#) [AN0024023](#) [154-42B7WM250](#) [MS3117-14AC](#) [1643543-1](#)
[1766966-1](#) [1791340000](#) [NLDFT-3-BL-L-S120-M40A](#) [NLDFT-N-W-L-C240-M40B](#) [1926015-1](#) [NLS-3-BL-C240-M40B](#) [NLS-N-W-C240-](#)
[M40B](#) [NPS-3-BL-T6](#) [2-1589900-8](#) [9300480317](#) [294-0091-01100](#) [296-0040-01100](#) [1-6609148-0](#) [A32595-0049](#) [1766249-1](#) [19000005132](#)
[1926016-1](#) [1-966831-8](#) [AN0024202](#) [AN0264023](#) [279-0841-10100A](#) [281-0334-00100A](#) [RMSB4](#) [419-2083-301](#) [LCDX4/0-14B-X](#) [075-8519-](#)
[001](#) [078238-1613](#) [07.470.3256.0](#) [09000005288](#) [09140240311](#)