

HDC enclosures HDC 06B SDLU 1PG16G

Weidmüller Interface GmbH & Co. KG
Klingenbergstraße 26
D-32758 Detmold
Germany
Fon: +49 5231 14-0
Fax: +49 5231 14-292083
www.weidmueller.com



The special die-cast alloy and the multi-layered surface sealing provide complete protection for the HDC housings.

The cleverly designed interlock system is manufactured from stainless steel. This guarantees a long lifespan with high resistance to corrosion and impact.

The housing interlock system provides integrated safety. Our unique, patented spring system provides the housing interlock with a secure grip and prevents accidental opening.

The laser marking allows for easy and quick identification. Each housing is permanently labelled with a laser marking so that each product can be quickly designated and positioned.

Weidmüller RockStar® IP 65 / NEMA Type 4X housings - your first choice for industrial housings with IP 65 protection.

General ordering data

Type	HDC 06B SDLU 1PG16G
Order No.	1652980000
Version	HDC enclosures, Size: 3, Protection degree: IP65, Closed base, End-locking clamp, lower side, Standard, with cover, Size of cable entries: PG 16
GTIN (EAN)	4008190403058
Qty.	1 pc(s).

**HDC enclosures
HDC 06B SDLU 1PG16G**

Weidmüller Interface GmbH & Co. KG
 Klingenbergstraße 26
 D-32758 Detmold
 Germany
 Fon: +49 5231 14-0
 Fax: +49 5231 14-292083
 www.weidmueller.com

Technical data**Dimensions and weights**

Width	92.5 mm	Width (inches)	3.642 inch
Height	72 mm	Height (inches)	2.835 inch
Mounting dimension - width	70 mm	Mounting dimension - height	40 mm
Net weight	295 g		

Temperatures

Limit temperature -40 °C ... 125 °C

Environmental Product Compliance

REACH SVHC Lead 7439-92-1, DIBP 84-69-5

Dimensions

Cable entry	w. threading	Height of base B1	5 mm
Height of housing B	54 mm	Hole pitch length A2	70 mm
Total length housing	60 mm	Width base C1	54.5 mm
Width housing C	43 mm		

General data

EMC housings	No	Housing main material	diecast aluminium
Material of locking element	Stainless steel, rust-proof	Protection class note	Protection class with secured cover: IP 65
Protection degree	IP65	Surface finish	Powder coating
Tightening torque	1.2 Nm		

Version

Cable entry	w. threading	Clamp version	End-locking clamp
Cover	with cover	Design	Standard
Design of cover	with cover	Design of housing	Closed base
Design of locking system	End-locking clamp, lower side	Internal thread	PG 16
Number of cable entry on top	0	Number of cable entry sideways	1
Sealing	NBR	Size	3
Size of cable entries	PG 16	Suitable for ModuPlug®	No
Tightening torque	1.2 Nm	Top part/bottom part/lid	lower part
Type	Base housing		

Classifications

ETIM 6.0	EC000437	ETIM 7.0	EC000437
eClass 9.0	27-44-02-02	eClass 9.1	27-44-02-02
eClass 10.0	27-44-02-02	UNSPSC	30-21-18-01

Approvals

Approvals



Data sheet**HDC enclosures
HDC 06B SDLU 1PG16G**

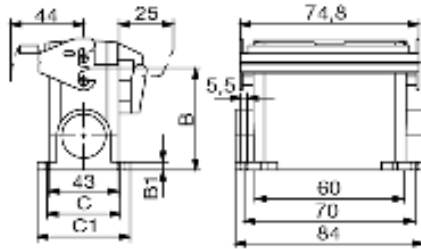
Weidmüller Interface GmbH & Co. KG
Klingenbergstraße 26
D-32758 Detmold
Germany
Fon: +49 5231 14-0
Fax: +49 5231 14-292083
www.weidmueller.com

Technical data**Downloads**

Brochure/Catalogue	CAT 3 HDC 17/18 EN FL FIELDWIRING EN
Engineering Data	EPLAN, WSCAD
Engineering Data	STEP
Technical Documentation	1652980000_HDC_06B_SDLU_1PG16G_STP_Blatt_1.pdf

Data sheet**HDC enclosures
HDC 06B SDLU 1PG16G**

Weidmüller Interface GmbH & Co. KG
Klingenbergstraße 26
D-32758 Detmold
Germany
Fon: +49 5231 14-0
Fax: +49 5231 14-292083
www.weidmueller.com

Drawings

X-ON Electronics

Largest Supplier of Electrical and Electronic Components

Click to view similar products for [Pluggable Terminal Blocks](#) category:

Click to view products by [Weidmuller](#) manufacturer:

Other Similar products are found below :

[57.404.7553](#) [57.504.0053.7](#) [57.510.0053](#) [57.910.6153](#) [01.112.1453](#) [CTB932VE/6](#) [MC 1.5/ 6-ST-3.5 GY AU](#) [ET02015000J0G](#) [734-104](#) [734-302](#) [734-304](#) [8-141-P](#) [FKCT 2.5/ 3-ST KMGY](#) [860505](#) [860508](#) [860516](#) [860810](#) [861908](#) [GBPACX-12](#) [93.731.4953.0](#) [PV05-5,08-K](#) [PVP02-5,00](#) [PVP04-3,50](#) [PVS02-5,00](#) [1-1986160-3](#) [H-10](#) [1546228-5](#) [ELFH09150](#) [ELFH16150](#) [ELFP03110](#) [ELFT06250](#) [ELFT07250](#) [ELVF09400](#) [ELVP03100](#) [ELXH03100](#) [ELXH071G0E](#) [ELXP041G0](#) [ELXT046G0](#) [1700101](#) [1700410](#) [1700425](#) [1703176](#) [1705229](#) [1710175](#) [1714537](#) [1717806](#) [1719600](#) [1729386](#) [1734692](#) [1734795](#)