

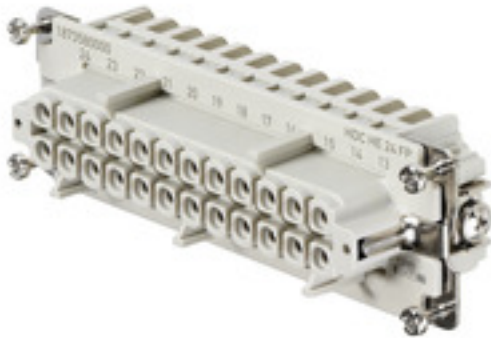
**HDC HE 24 FP****Weidmüller Interface GmbH & Co. KG**

Klingenbergstraße 26

D-32758 Detmold

Germany

www.weidmueller.com



The PUSH IN connection is a direct-insert method of connection. The preprocessed wire can be inserted directly into the wire connection without the need for any tools.

Number of poles: **24**Rated current: **16 A**Rated voltage: **500 V**Nominal voltage acc. to UL/CSA: **600 V AC/DC**

PUSH IN technology

**General ordering data**

|            |  |
|------------|--|
| Version    | HDC insert, Female, 500 V, 16 A, Number of poles: 24, PUSH IN, Size: 8 |
| Order No.  | <a href="#">1873580000</a>   |
| Type       | HDC HE 24 FP   |
| GTIN (EAN) | 4032248458196  |
| Qty.       | 1 pc(s).   |

Creation date September 16, 2022 8:18:57 PM CEST

Catalogue status 09.09.2022 / We reserve the right to make technical changes.

## HDC HE 24 FP

Weidmüller Interface GmbH &amp; Co. KG

Klingenbergstraße 26

D-32758 Detmold

Germany

www.weidmueller.com

## Technical data

## Dimensions and weights

|            |         |                 |            |
|------------|---------|-----------------|------------|
| Depth      | 111 mm  | Depth (inches)  | 4.37 inch  |
| Height     | 33.8 mm | Height (inches) | 1.331 inch |
| Width      | 34 mm   | Width (inches)  | 1.339 inch |
| Net weight | 113 g   |                 |            |

## Temperatures

|                   |                   |
|-------------------|-------------------|
| Limit temperature | -40 °C ... 125 °C |
|-------------------|-------------------|

## Environmental Product Compliance

|            |  |
|------------|--|
| REACH SVHC | Lead 7439-92-1, Potassium perfluorobutane sulfonate 29420-49-3 |
| SCIP       | b67daa31-7dca-434d-8290-da7fb52f83a2                           |

|                     |                          |                           |
|---------------------|--------------------------|---------------------------|
| Chemical resistance | Substance                | Acetone                   |
|                     | Chemical resistance      | Resistant                 |
|                     | Substance                | Ammonia, watery           |
|                     | Chemical resistance      | Conditionally resistant   |
|                     | Substance                | Petrol                    |
|                     | Chemical resistance      | Resistant                 |
|                     | Substance                | Benzene                   |
|                     | Chemical resistance      | Resistant                 |
|                     | Substance                | Diesel oil                |
|                     | Chemical resistance      | Conditionally resistant   |
|                     | Substance                | Acetic acid, concentrated |
|                     | Chemical resistance      | Resistant                 |
|                     | Substance                | Potassium hydroxide       |
|                     | Chemical resistance      | Conditionally resistant   |
|                     | Substance                | Methanol                  |
|                     | Chemical resistance      | Conditionally resistant   |
|                     | Substance                | Motor oil                 |
| Chemical resistance | Conditionally resistant  |                           |
| Substance           | Lye, diluted             |                           |
| Chemical resistance | Resistant                |                           |
| Substance           | Hydrochlorofluorocarbons |                           |
| Chemical resistance | Conditionally resistant  |                           |
| Substance           | Outdoor use              |                           |
| Chemical resistance | Conditionally resistant  |                           |

## Dimensions

|                  |         |                   |        |
|------------------|---------|-------------------|--------|
| Height of socket | 33.8 mm | Total length base | 111 mm |
| Width            | 34 mm   |                   |        |

## HDC HE 24 FP

Weidmüller Interface GmbH &amp; Co. KG

Klingenbergstraße 26

D-32758 Detmold

Germany

www.weidmueller.com

## Technical data

## General data

|                              |                   |                                      |   |
|------------------------------|-------------------|--------------------------------------|---|
| BG                           | 8                 | Insulating material                  | PC glass-fibre reinforced (UL-listed and railway-certified) |
| Insulating material group    | IIIa              | Insulation strength                  | 10 <sup>10</sup> Ω  |
| Material                     | Copper alloy      | Number of poles                      | 24  |
| Plugging cycles, silver      | ≥ 500             | Pollution severity                   | 3   |
| Rated current (DIN EN 61984) | 16 A              | Rated impulse voltage (DIN EN 61984) | 6 kV  |
| Rated voltage (DIN EN 61984) | 500 V             | Rated voltage according to UL/CSA    | 600 V AC/DC   |
| Series                       | HE                | Size                                 | 8   |
| Surface finish               | Silver passivated | Type                                 | Female  |
| UL 94 flammability rating    | V-0               | Volume resistance                    | ≤2 mΩ   |

## Connection data PE

|                                       |                   |                                       |              |
|---------------------------------------|-------------------|---------------------------------------|--------------|
| Blade size, crosshead                 | size PH1          | Blade size, slotted (PE connection)   | SD 0.8 x 4.0 |
| Connection type PE                    | Screw connection  | Fixing screw                          | M 4          |
| Rated cross-section                   | 4 mm <sup>2</sup> | Stripping length PE connection        | 10 mm        |
| Tightening torque, max. PE connection | 1.5 Nm            | Tightening torque, min. PE connection | 1.2 Nm       |
| Wire cross section, AWG (PE), max.    | AWG 12            | Wire cross section, AWG (PE), min.    | AWG 20       |

## Version

|   |                     |   |                     |
|---|---------------------|---|---------------------|
| BG  | 8                   | Blade size, slotted (screw connection)  | SD 0.5 x 3.0        |
| Conductor cross-section, max.   | 2.5 mm <sup>2</sup> | Conductor cross-section, min.   | 0.5 mm <sup>2</sup> |
| Material  | Copper alloy        | Size  | 8                   |
| Stripping length, rated connection  | 10 mm               | Surface finish  | Silver passivated   |
| Type of connection  | PUSH IN             | Volume resistance   | ≤2 mΩ               |
| Wire connection cross section, finely stranded, max.                                    | 2.5 mm <sup>2</sup> | Wire connection cross section, finely stranded, min.                                    | 0.5 mm <sup>2</sup> |
| Wire connection cross-section, finely stranded with wire-end ferrules DIN 46228/1, max. | 2.5 mm <sup>2</sup> | Wire connection cross-section, finely stranded with wire-end ferrules DIN 46228/1, min. | 0.5 mm <sup>2</sup> |
| Wire connection cross-section, finely stranded with wire-end ferrules DIN 46228/4, max. | 1.5 mm <sup>2</sup> | Wire connection cross-section, finely stranded with wire-end ferrules DIN 46228/4, min. | 0.5 mm <sup>2</sup> |
| Wire cross-section, solid, max.   | 1.5 mm <sup>2</sup> | Wire cross-section, solid, min.   | 0.5 mm <sup>2</sup> |

## Classifications

|             |             |             |             |
|-------------|-------------|-------------|-------------|
| ETIM 6.0    | EC000438    | ETIM 7.0    | EC000438    |
| ETIM 8.0    | EC000438    | ECLASS 9.0  | 27-44-02-05 |
| ECLASS 9.1  | 27-44-02-05 | ECLASS 10.0 | 27-44-02-05 |
| ECLASS 11.0 | 27-44-02-05 | ECLASS 12.0 | 27-44-02-05 |

## Approvals

Approvals



|                         |            |
|-------------------------|------------|
| ROHS                    | Conform    |
| UL File Number Search   | UL Website |
| Certificate No. (cURus) | E310075    |

Creation date September 16, 2022 8:18:57 PM CEST

Catalogue status 09.09.2022 / We reserve the right to make technical changes.

3

**HDC HE 24 FP**

**Weidmüller Interface GmbH & Co. KG**  
Klingenbergstraße 26  
D-32758 Detmold  
Germany

[www.weidmueller.com](http://www.weidmueller.com)

**Technical data****Downloads**

---

|                         |  |
|-------------------------|--|
| Engineering Data        | <a href="#">CAD data – STEP</a>  |
| Engineering Data        | <a href="#">EPLAN, WSCAD, Zuken E3.S</a>                               |
| Technical Documentation | <a href="#">1873580000 HDC HE 24 FP STP Blatt_1.pdf</a>                |
| Catalogues              | <a href="#">Catalogues in PDF-format</a>                               |
| Brochures               | <a href="#">FL FIELDWIRING EN</a><br><a href="#">FL FIELDWIRING EN</a> |

---

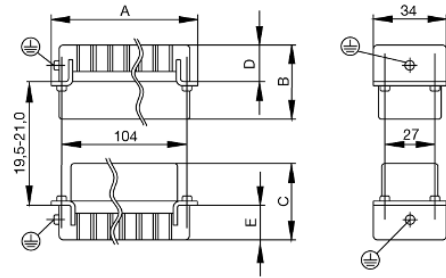
**Data sheet**

**HDC HE 24 FP**

**Weidmüller Interface GmbH & Co. KG**  
Klingenbergstraße 26  
D-32758 Detmold  
Germany

[www.weidmueller.com](http://www.weidmueller.com)

**Drawings**



# Tightening torques and screwing tools

| Screw size                     | Connector type                                       | Dia. tightening torque in Nm  | Recommended blade inserts and AF size for hexagon socket |                                   |
|--------------------------------|--|---|--|-----------------------------------|
| <b>M 2.5</b>                   | <b>Signal contacts</b>                               |   |  |                                   |
|                                | S 6/6  | 0.5 - 0.55  | SD 0.6 x 3.5 mm or PZ0                                   |                                   |
|                                | S 6/12   | 0.5 - 0.55  | SD 0.6 x 3.5 mm or PZ0                                   |                                   |
| <b>M 2.9 x 0.5</b>             | <b>Fastening screws</b>                              |   |  |                                   |
|                                | HQ 4/2   | 0.8 (plastic) / 1.1 (metal)   | SD 0.6 x 3.5 mm or PH0                                   |                                   |
|                                | HQ 8   | 0.8 (plastic) / 1.1 (metal)   | SD 0.6 x 3.5 mm or PH0                                   |                                   |
|                                | HQ 17  | 0.8 (plastic) / 1.1 (metal)   | SD 0.6 x 3.5 mm or PH0                                   |                                   |
| <b>M 3</b>                     | <b>Contact screws</b>                                |   |  |                                   |
|                                | HA 3   | 0.5 - 0.55  | SD 0.5 x 3.0 mm  |                                   |
|                                | HA 4   | 0.5 - 0.55  | SD 0.5 x 3.0 mm  |                                   |
|                                | HA 10 bis HA 48                                      | 0.5 - 0.55  | SD 0.6 x 3.5 mm or PH0                                   |                                   |
|                                | HE   | 0.5 - 0.55  | SD 0.6 x 3.5 mm or PZ0                                   |                                   |
|                                | HVE  | 0.5 - 0.55  | SD 0.6 x 3.5 mm or PZ0                                   |                                   |
|                                | <b>Signal contacts:</b>                              |   |  |                                   |
|                                | S 4/2  | 0.5 - 0.55  | SD 0.6 x 3.5 mm or PZ0                                   |                                   |
|                                | S 4/8  | 0.5 - 0.55  | SD 0.6 x 3.5 mm or PZ0                                   |                                   |
|                                | <b>PE connection via female contact</b>              |   |  |                                   |
|                                | S 4  | 0.5 - 0.8   | SD 0.6 x 3.5 mm  |                                   |
|                                | ConCept modular frame, metal                         | 0.5 - 0.55  | SD 0.6 x 3.5 mm  |                                   |
|                                | <b>PE terminal</b>                                   |   |  |                                   |
|                                | HQ 5   | 0.5 - 0.55  | SD 0.6 x 3.5 or 0.8 x 4 mm                               |                                   |
|                                | HQ 7   | 0.5 - 0.55  | SD 0.6 x 3.5 or 0.8 x 4 mm                               |                                   |
|                                | <b>Fastening screws</b>                              | 0.5 - 0.55  | SD 0.6 x 3.5 mm or PZ0                                   |                                   |
|                                | <b>Guide pin</b>                                     | 0.5 - 0.55  | SD 0.6 x 3.5 mm or PZ0                                   |                                   |
|                                | <b>Guide bush</b>                                    | 0.5 - 0.55  | SD 0.6 x 3.5 mm or PZ0                                   |                                   |
|                                | <b>Coding pins</b>                                   | 0.5 - 0.55  | SD 0.6 x 3.5 mm or PZ0                                   |                                   |
|                                | <b>M 4</b>   | <b>Contact screws</b>   |  |                                   |
|                                |  | HSB   | 1.2 - 1.5  | SD 0.6 x 3.5 or 0.8 x 4 mm or PZ1 |
|                                |  | <b>PE connection via male contact</b>   |  |                                   |
| S 4                            |  | 0.5 - 0.8   | SD 0.6 x 3.5 mm  |                                   |
| ConCept modular frame, metal   |  | 1.2 - 1.5   | SD 0.6 x 3.5 mm  |                                   |
| <b>PE terminal</b>             |  |   |  |                                   |
| HA                             |  | 1.2 - 1.5   | SD 0.6 x 3.5 or 0.8 x 4 mm or PH1                        |                                   |
| HE                             |  | 1.2 - 1.5   | SD 0.6 x 3.5 or 0.8 x 4 mm or PH1                        |                                   |
| HEE                            |  | 1.2 - 1.5   | SD 0.6 x 3.5 or 0.8 x 4 mm or PH1                        |                                   |
| HVE                            |  | 1.2 - 1.5   | SD 0.6 x 3.5 or 0.8 x 4 mm or PH1                        |                                   |
| HD                             |  | 1.2 - 1.5   | SD 0.6 x 3.5 or 0.8 x 4 mm or PZ1                        |                                   |
| HDD                            |  | 1.2 - 1.5   | SD 0.6 x 3.5 or 0.8 x 4 mm or PZ1                        |                                   |
| S 6/6 (for signal contacts)    |  | 1.2 - 1.5   | 0.8 x 4 mm or PZ1  |                                   |
| ConCept modular frame, plastic |  | 1.2 - 1.5   | 0.8 x 4 mm or PZ1  |                                   |
| <b>M 5</b>                     |  | <b>PE terminal</b>  |  |                                   |
|                                |  | HSB   | 2 - 2.5  | SD 1 x 5.5 mm or PZ2              |
|                                |  | S 4/0 (Screw connection)  | 2 - 2.5  | SD 1.2 x 6.5 mm or PH2            |
|                                | S 4/0 (Axial screw connection)                       | 2 - 2.5   | SD 0.8 x 4 mm or PZ 2                                    |                                   |
|                                | S 4/2  | 2 - 2.5   | SD 1.2 x 6.5 mm or PH2                                   |                                   |
|                                | S 4/8  | 2 - 2.5   | SD 1.2 x 6.5 mm or PH2                                   |                                   |
|                                | S 6/12   | 2 - 2.5   | SD 0.8 x 4 mm or PZ 2                                    |                                   |
|                                | S 6/36   | 2 - 2.5   | SD 1.2 x 6.5 mm or PH2                                   |                                   |
|                                | S 8/24   | 2 - 2.5   | SD 1.2 x 6.5 mm or PH2                                   |                                   |
|                                | S 12/2   | 2 - 2.5   | SD 1.2 x 6.5 mm or PH2                                   |                                   |
|                                | <b>M 6</b>   | <b>Power contacts</b>   |  |                                   |
| S 4/0 (Screw connection)       |  | 1.2 (1.5 mm <sup>2</sup> ) / 2 (2.5 mm <sup>2</sup> ) / 3 (4-16 mm <sup>2</sup> ) | SD 0.8 x 4 mm  |                                   |
| S 4/2                          |  | 1.2 (1.5 mm <sup>2</sup> ) / 2 (2.5 mm <sup>2</sup> ) / 3 (4-16 mm <sup>2</sup> ) | SD 0.8 x 4 mm  |                                   |
| S 4/8                          |  | 1.2 (1.5 mm <sup>2</sup> ) / 2 (2.5 mm <sup>2</sup> ) / 3 (4-16 mm <sup>2</sup> ) | SD 0.8 x 4 mm  |                                   |
| <b>M 7 x 0.75</b>              | <b>Power contacts</b>                                |   |  |                                   |
|                                | S 4  | 1.1 - 1.7   | SW 2   |                                   |
| S 6/6 (+ PE)                   | 6 - 8  | SW 4  |  |                                   |
| <b>M 8 x 0.75</b>              | <b>Power contacts</b>                                |   |  |                                   |
|                                | S 6/12   | 1.1 - 1.7   | SW 2   |                                   |
| S 8/0 (+ PE)                   | 6 (10-16 mm <sup>2</sup> ) - 7 (25 mm <sup>2</sup> ) | SW 4  |  |                                   |
| <b>M10 x 1</b>                 | <b>Power contacts</b>                                |   |  |                                   |
|                                | S 4/0 (Axial connection)                             | 2 - 3   | SW 3   |                                   |

Increasing the tightening torque does not improve the contact resistance. The stated torque settings offer optimal mechanical, thermal and electrical conditions. Exceeding the recommended values may even damage the conductor and terminal.

## X-ON Electronics

Largest Supplier of Electrical and Electronic Components

*Click to view similar products for [Heavy Duty Power Connectors](#) category:*

*Click to view products by [Weidmuller](#) manufacturer:*

Other Similar products are found below :

[647757-1](#) [6643411-1](#) [6646058-2](#) [6646137-1](#) [6646138-1](#) [6646608-1](#) [6646786-1](#) [6646940-1](#) [6651091-1](#) [6651525-1](#) [6651529-1](#) [6651788-1](#)  
[696475-1](#) [702-32-01109](#) [703-25-02205](#) [73000005059](#) [73000005642](#) [73080254296](#) [73080255059](#) [73080965046](#) [765-15-0080A](#)  
[765-16-0080B](#) [765-18-0080D](#) [902-77-02113](#) [PS00/A0620/6300](#) [129-1J](#) [1409400](#) [E6374G1](#) [e6389g2](#) [157-43GW8](#) [MS3117-14AC](#) [1643543-1](#)  
[1650540-1](#) [1651811-2](#) [1766260-1](#) [1766282-1](#) [1766966-1](#) [1791340000](#) [NLDFT-3-BL-L-S120-M40A](#) [NLDFT-N-W-L-C240-M40B](#) [1926015-](#)  
[1](#) [NLS-N-W-C240-M40B](#) [2-1589900-8](#) [2199314-1](#) [KA8102](#) [9300480317](#) [29131](#) [294-0091-01100](#) [296-0040-01100](#) [1646905-1](#)