

## HDC 16D SDLU 1M25G

**Weidmüller Interface GmbH & Co. KG**

Klingenbergstraße 26

D-32758 Detmold

Germany

[www.weidmueller.com](http://www.weidmueller.com)



The special die-cast alloy and the multi-layered surface sealing provide complete protection for the HDC housings.

The cleverly designed interlock system is manufactured from stainless steel. This guarantees a long lifespan with high resistance to corrosion and impact.

The housing interlock system provides integrated safety. Our unique, patented spring system provides the housing interlock with a secure grip and prevents accidental opening.

The laser marking allows for easy and quick identification. Each housing is permanently labelled with a laser marking so that each product can be quickly designated and positioned.

Weidmüller RockStar® IP 65 / NEMA Type 4X housings - your first choice for industrial housings with IP 65 protection.

### General ordering data

|            |   |
|------------|---|
| Version    | HDC enclosures, Size: 3, Protection degree: IP65 (in plugged condition), Base housing, End-locking clamp, lower side, high, with cover, Size of cable entries: M 25 |
| Order No.  | <a href="#">1900820000</a>  |
| Type       | HDC 16D SDLU 1M25G  |
| GTIN (EAN) | 4032248521098   |
| Qty.       | 1 pc(s).  |

## HDC 16D SDLU 1M25G

**Weidmüller Interface GmbH & Co. KG**

Klingenbergstraße 26

D-32758 Detmold

Germany

www.weidmueller.com

## Technical data

### Dimensions and weights

|                             |         |                            |            |
|-----------------------------|---------|----------------------------|------------|
| Height                      | 92 mm   | Height (inches)            | 3.622 inch |
| Width                       | 92.5 mm | Width (inches)             | 3.642 inch |
| Mounting dimension - height | 45 mm   | Mounting dimension - width | 70 mm      |
| Net weight                  | 374 g   |                            |            |

### Temperatures

|                   |                   |
|-------------------|-------------------|
| Limit temperature | -40 °C ... 125 °C |
|-------------------|-------------------|

### Environmental Product Compliance

|            |  |
|------------|--|
| REACH SVHC | Lead 7439-92-1, Potassium perfluorobutane sulfonate 29420-49-3 |
| SCIP       | e98b2b24-ba23-41bf-8d19-0dda3647412f                           |

|                     |                     |                         |
|---------------------|---------------------|-------------------------|
| Chemical resistance | Substance           | Acetone                 |
|                     | Chemical resistance | Conditionally resistant |
|                     | Substance           | Drilling oil            |
|                     | Chemical resistance | Resistant               |
|                     | Substance           | Diesel                  |
|                     | Chemical resistance | Resistant               |
|                     | Substance           | Ethyl alcohol           |
|                     | Chemical resistance | Resistant               |
|                     | Substance           | Transmission oil        |
|                     | Chemical resistance | Resistant               |
|                     | Substance           | Hydraulic oil           |
|                     | Chemical resistance | Resistant               |
|                     | Substance           | Coolant                 |
|                     | Chemical resistance | Resistant               |
|                     | Substance           | Petroleum benzine       |
|                     | Chemical resistance | Resistant               |
|                     | Substance           | Sweat                   |
|                     | Chemical resistance | Resistant               |
|                     | Substance           | Premium gasoline        |
|                     | Chemical resistance | Conditionally resistant |
| Substance           | Water               |                         |
| Chemical resistance | Resistant           |                         |
| Substance           | UV                  |                         |
| Chemical resistance | Unstable            |                         |
| Substance           | Ozone               |                         |
| Chemical resistance | Unstable            |                         |

### Dimensions

|                      |           |                      |         |
|----------------------|-----------|----------------------|---------|
| Cable entry          | w. thread | Height of base B1    | 5 mm    |
| Height of housing B  | 74 mm     | Hole pitch length A2 | 70 mm   |
| Total length housing | 60 mm     | Width base C1        | 54.5 mm |
| Width housing C      | 43 mm     |                      |         |

### General data

|                             |                             |                             |  |
|-----------------------------|-----------------------------|-----------------------------|--|
| EMC housings                | No                          | Housing main material       | diecast aluminium                          |
| Material of locking element | Stainless steel, rust-proof | Protection class note       | Protection class with secured cover: IP 65 |
| Protection degree           |                             | IP65 (in plugged condition) | Surface finish                             |
| Tightening torque           | 1.2 Nm                      |                             |  |

Creation date September 16, 2022 9:28:32 PM CEST

## HDC 16D SDLU 1M25G

**Weidmüller Interface GmbH & Co. KG**

Klingenbergstraße 26

D-32758 Detmold

Germany

www.weidmueller.com

## Technical data

### Version

|                              |                               |                                |              |
|------------------------------|-------------------------------|--------------------------------|--------------|
| BG                           | 3                             | Cable entry                    | w. thread    |
| Clamp version                | End-locking clamp             | Colour (RAL)                   | RAL 7035     |
| Cover                        | with cover                    | Design                         | high         |
| Design of cover              | with cover                    | Design of housing              | Base housing |
| Design of locking system     | End-locking clamp, lower side | Internal thread                | M 25         |
| Number of cable entry on top | 0                             | Number of cable entry sideways | 1            |
| Sealing                      | NBR                           | Size                           | 3            |
| Size of cable entries        | M 25                          | Suitable for ModuPlug®         | Yes          |
| Tightening torque            | 1.2 Nm                        | Top part/bottom part/lid       | lower part   |
| Type                         | Base housing                  |                                |              |

### Classifications

|             |             |             |             |
|-------------|-------------|-------------|-------------|
| ETIM 6.0    | EC000437    | ETIM 7.0    | EC000437    |
| ETIM 8.0    | EC000437    | ECLASS 9.0  | 27-44-02-02 |
| ECLASS 9.1  | 27-44-02-02 | ECLASS 10.0 | 27-44-02-02 |
| ECLASS 11.0 | 27-44-02-02 | ECLASS 12.0 | 27-44-02-02 |

### Approvals

Approvals



|                         |            |
|-------------------------|------------|
| ROHS                    | Conform    |
| UL File Number Search   | UL Website |
| Certificate No. (cURus) | E92202     |

### Downloads

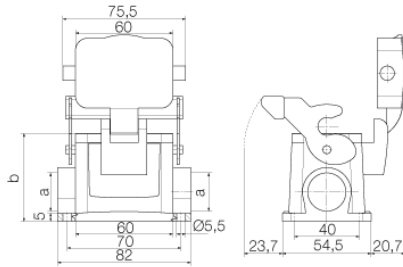
|                             |  |
|-----------------------------|--|
| Engineering Data            | <a href="#">CAD data – STEP</a>  |
| Engineering Data            | <a href="#">EPLAN, WSCAD</a>   |
| Product Change Notification | <a href="#">20220214 Technical change to HDC housings</a><br><a href="#">20220214 Technische Änderung bei HDC-Gehäusen</a> |
| Catalogues                  | <a href="#">Catalogues in PDF-format</a>   |
| Brochures                   | <a href="#">FL FIELDWIRING EN</a><br><a href="#">FL FIELDWIRING EN</a>   |

**HDC 16D SDLU 1M25G**

**Weidmüller Interface GmbH & Co. KG**  
Klingenbergstraße 26  
D-32758 Detmold  
Germany

[www.weidmueller.com](http://www.weidmueller.com)

**Drawings**



## X-ON Electronics

Largest Supplier of Electrical and Electronic Components

*Click to view similar products for [Heavy Duty Power Connectors](#) category:*

*Click to view products by [Weidmuller](#) manufacturer:*

Other Similar products are found below :

[6646058-2](#) [6646137-1](#) [6646138-1](#) [6646940-1](#) [6651091-1](#) [6651525-1](#) [6651529-1](#) [696475-1](#) [702-32-01109](#) [73080255059](#) [73080965046](#)  
[7310205040001](#) [765-16-0080B](#) [765-18-0080D](#) [902-77-02113](#) [PS00/A0620/6300](#) [AN0024023](#) [154-42B7WM250](#) [MS3117-14AC](#) [1643543-1](#)  
[1766966-1](#) [1791340000](#) [NLDFT-3-BL-L-S120-M40A](#) [NLDFT-N-W-L-C240-M40B](#) [1926015-1](#) [NLS-3-BL-C240-M40B](#) [NLS-N-W-C240-](#)  
[M40B](#) [NPS-3-BL-T6](#) [2-1589900-8](#) [9300480317](#) [294-0091-01100](#) [296-0040-01100](#) [1-6609148-0](#) [A32595-0049](#) [1766249-1](#) [19000005132](#)  
[1926016-1](#) [1-966831-8](#) [AN0024202](#) [AN0264023](#) [279-0841-10100A](#) [281-0334-00100A](#) [RMSB4](#) [419-2083-301](#) [LCDX4/0-14B-X](#) [075-8519-](#)  
[001](#) [078238-1613](#) [07.470.3256.0](#) [09000005288](#) [09140240311](#)