

CABTITE LNS M25 BK

Weidmüller Interface GmbH & Co. KG

Klingenbergstraße 26

D-32758 Detmold

Germany

www.weidmueller.com

Similar to illustration



For metric M20 to M63 through-holes, the Cabtite cable entry system offers separable cable glands for cables with and without plugs. In case of maintenance or changes in the system, pre-assembled cables with diameters of 2 to 35 mm can be inserted quickly and safely in panels or enclosures. Reliable sealing of IP66 in accordance with DIN EN 60529 and an absolutely secure fitting (strain relief based on DIN EN 62444) is ensured by placing slotted sealing elements with a wave cut around the cable before being inserted into one of the two halves of the cable gland. The separable system ensures easy and fast installation. After inserting the sealing element, the two halves of the cable gland are simply snapped together. A locknut, which is also separable, on the inside of the panel ensures a reliable and secure hold.

General ordering data

Version	separable locknut, Cabtite (cable entry system), Polyamide, glass fibre-reinforced, Deep black, Height: 33 mm, Width: 33 mm, Depth: 7 mm, -40 °C... 120 °C
Order No.	2584090000
Type	CABTITE LNS M25 BK
GTIN (EAN)	4050118616316
Qty.	10 pc(s).

CABTITE LNS M25 BK**Weidmüller Interface GmbH & Co. KG**

Klingenbergstraße 26

D-32758 Detmold

Germany

www.weidmueller.com

Technical data**Dimensions and weights**

Depth	7 mm	Depth (inches)	0.276 inch
Height	33 mm	Height (inches)	1.299 inch
Width	33 mm	Width (inches)	1.299 inch
Diameter	36 mm	Net weight	3.3 g

Temperatures

Operating temperature	-40 °C...120 °C
-----------------------	-----------------

General information

AF size 1	33 mm	AF size 2	36 mm
External thread	M 25	Halogen	No
Material	Polyamide, glass fibre-reinforced	Pitch of thread	1.5 mm
Silicone	No	UL 94 flammability rating	V-0

Classifications

ETIM 6.0	EC000940	ETIM 7.0	EC000940
ETIM 8.0	EC000940	ECLASS 9.0	27-14-44-24
ECLASS 9.1	27-14-44-24	ECLASS 10.0	27-14-44-24
ECLASS 11.0	27-14-44-24	ECLASS 12.0	27-14-08-07

Approvals

ROHS	Conform
------	---------

Downloads

Engineering Data	CAD data – STEP
Engineering Data	EPLAN
User Documentation	Installation Instructions
Catalogues	Catalogues in PDF-format

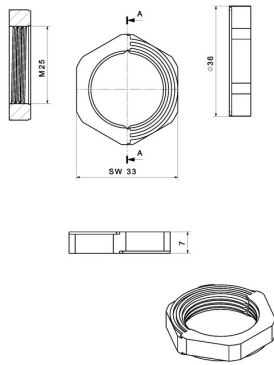
CABTITE LNS M25 BK

Weidmüller Interface GmbH & Co. KG
Klingenbergstraße 26
D-32758 Detmold
Germany

www.weidmueller.com

Drawings

Dimensioned drawing



X-ON Electronics

Largest Supplier of Electrical and Electronic Components

Click to view similar products for [Grommets & Bushings](#) category:

Click to view products by [Weidmuller](#) manufacturer:

Other Similar products are found below :

[205339-4](#) [3-1991136-0](#) [561-FGUP0850B](#) [561-MP13716](#) [561-FGUP0400N](#) [SRB-R-6](#) [1398081-1](#) [1301800320](#) [M10-113814-005](#) [2298](#) [HSS-M80-TPE-V0](#) [205339-2](#) [4014B](#) [2407](#) [2141-P](#) [2417-P](#) [2917-P](#) [3108-P](#) [2871-P](#) [1342664](#) [23MP04N40](#) [51409](#) [HSS-M25-TPE RAL9005](#) [HTT-29](#) [BDE 16](#) [HSS-M60-TPE RAL9005](#) [HSS-M80-TPE RAL9005](#) [HTT-48](#) [633-01010](#) [CRQ 16](#) [MET-M16 RAL9005](#) [107292](#) [1251349](#) [100187](#) [100188](#) [100200](#) [100216](#) [100223](#) [100236](#) [10806](#) [12312](#) [12462](#) [12463](#) [12464](#) [12468](#) [1251347](#) [1251348](#) [52001970](#) [52001980](#) [52002000](#)