

HDC MHE 4X FP**Weidmüller Interface GmbH & Co. KG**

Klingenbergstraße 26

D-32758 Detmold

Germany

www.weidmueller.com

Product image**Flexible**

The four module sizes make for individual plug solutions that save a huge amount of space. The smaller pitch translates into an optimised design too.

General ordering data

| | |
|------------|----------------------------|
| Version | Signal module |
| Order No. | 2636060000 |
| Type | HDC MHE 4X FP |
| GTIN (EAN) | 4050118692808 |
| Qty. | 1 pc(s). |

Creation date September 18, 2022 1:09:07 AM CEST

Catalogue status 09.09.2022 / We reserve the right to make technical changes.

HDC MHE 4X FP**Weidmüller Interface GmbH & Co. KG**

Klingenbergstraße 26

D-32758 Detmold

Germany

www.weidmueller.com

Technical data**Dimensions and weights**

| | | | |
|------------|---------|-----------------|------------|
| Depth | 70.5 mm | Depth (inches) | 2.776 inch |
| Height | 63 mm | Height (inches) | 2.48 inch |
| Width | 7.15 mm | Width (inches) | 0.281 inch |
| Net weight | 28 g | | |

Temperatures

| | |
|-------------------|-------------------|
| Limit temperature | -40 °C ... 125 °C |
|-------------------|-------------------|

Environmental Product Compliance

| | | | |
|------------|--|------|--|
| REACH SVHC | Lead 7439-92-1, Potassium perfluorobutane sulfonate 29420-49-3 | SCIP | 9ed66ce7-2fe8-4987- bb46-06cab3f02292 |
|------------|--|------|--|

General data

| | | | |
|------------------------------|------------------|--------------------------------------|---------------------------------------|
| Insulation strength | $10^{12} \Omega$ | Material | Polycarbonate, glass fibre reinforced |
| Number of poles | 4 | Number of potentials | 4 |
| Plugging cycles | ≥ 500 | Pollution severity | 3 |
| Rated current (DIN EN 61984) | 16 A | Rated impulse voltage (DIN EN 61984) | 4 kV |
| Rated voltage (DIN EN 61984) | 250 V | Rated voltage according to UL/CSA | 600 V |
| Required plug-in slots | 0.5 | Series | ModuPlug |
| Surge voltage category | III | Type | Female |
| UL 94 flammability rating | V-0 | | |

PE connection data

| | |
|--------------------|--------------------------------------|
| Connection type PE | Screw connection via module frame |
|--------------------|--------------------------------------|

Version

| | | | |
|--|---------------------|--|-----------------------|
| Conductor cross-section, max. | 2.5 mm ² | Conductor cross-section, min. | 0.5 mm ² |
| Stripping length, rated connection | 10 mm | Type of connection | PUSH IN with actuator |
| Wire connection cross section AWG, max. | AWG 14 | Wire connection cross section AWG, min. | AWG 20 |

Classifications

| | | | |
|-------------|-------------|-------------|-------------|
| ETIM 6.0 | EC002312 | ETIM 7.0 | EC002312 |
| ETIM 8.0 | EC002312 | ECLASS 9.0 | 27-44-02-92 |
| ECLASS 9.1 | 27-44-02-18 | ECLASS 10.0 | 27-44-02-92 |
| ECLASS 11.0 | 27-44-02-92 | ECLASS 12.0 | 27-44-02-92 |

Important note

Product information

Data sheet**HDC MHE 4X FP**

Weidmüller Interface GmbH & Co. KG
Klingenbergstraße 26
D-32758 Detmold
Germany

www.weidmueller.com

Technical data**Approvals**

Approvals



| | |
|-------------------------|------------|
| UL File Number Search | UL Website |
| Certificate No. (cURus) | E92202 |

Downloads

| | |
|---|--|
| Approval/Certificate/Document of Conformity | Manufacturer's declaration |
| Engineering Data | CAD data – STEP |
| Product Change Notification | Technical change - EN Technical change - DE |
| Catalogues | Catalogues in PDF-format |

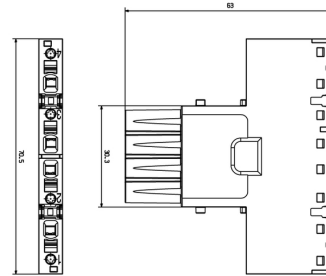
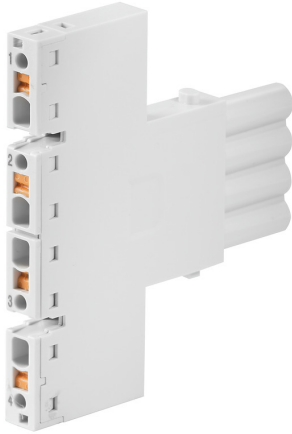
HDC MHE 4X FP

Weidmüller Interface GmbH & Co. KG
 Klingenbergstraße 26
 D-32758 Detmold
 Germany

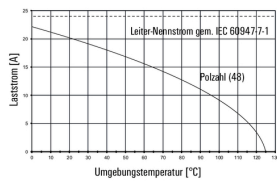
www.weidmueller.com

Drawings

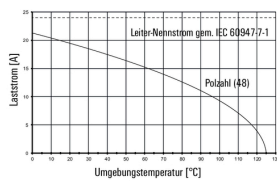
Product image



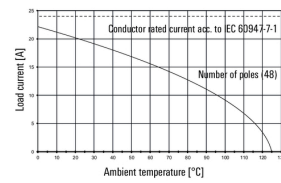
HDC MHE 4X MQT mit HDC MHE 4FQT / H07V-K2,5



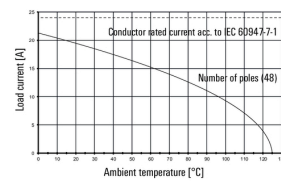
HDC MHE 4X FQT mit HDC MHE 4MQT / H07V-K2,5



HDC MHE 4X MQT with HDC MHE 4FQT / H07V-K2.5



HDC MHE 4X FQT with HDC MHE 4MQT / H07V-K2.5



X-ON Electronics

Largest Supplier of Electrical and Electronic Components

Click to view similar products for [Heavy Duty Power Connectors](#) category:

Click to view products by [Weidmuller](#) manufacturer:

Other Similar products are found below :

[6646058-2](#) [6646137-1](#) [6646138-1](#) [6646940-1](#) [6651091-1](#) [6651525-1](#) [6651529-1](#) [696475-1](#) [702-32-01109](#) [73080255059](#) [73080965046](#)
[7310205040001](#) [765-16-0080B](#) [765-18-0080D](#) [902-77-02113](#) [PS00/A0620/6300](#) [AN0024023](#) [154-42B7WM250](#) [MS3117-14AC](#) [1643543-1](#)
[1766966-1](#) [1791340000](#) [NLDFT-3-BL-L-S120-M40A](#) [NLDFT-N-W-L-C240-M40B](#) [1926015-1](#) [NLS-3-BL-C240-M40B](#) [NLS-N-W-C240-](#)
[M40B](#) [NPS-3-BL-T6](#) [2-1589900-8](#) [9300480317](#) [294-0091-01100](#) [296-0040-01100](#) [1-6609148-0](#) [A32595-0049](#) [1766249-1](#) [19000005132](#)
[1926016-1](#) [1-966831-8](#) [AN0024202](#) [AN0264023](#) [279-0841-10100A](#) [281-0334-00100A](#) [RMSB4](#) [419-2083-301](#) [LCDX4/0-14B-X](#) [075-8519-](#)
[001](#) [078238-1613](#) [07.470.3256.0](#) [09000005288](#) [09140240311](#)