

Weidmüller HB - Series Miniature Circuit Breakers

Datasheet



Single Pole OFF



Double Pole OFF



Triple Pole ON

Features:

- AC/DC UL 489 Branch Circuit Breaker
- Ultra compact - 13 mm wide module
- Hydraulic-Magnetic technology
- Can be switched on immediately after tripping
- DIN mount, 57 mm escutcheon (Black)
- ON and OFF indication
- Suitable for electrical isolation
- 100% Rating capability independent of ambient temperature
- One, two, three pole
- RoHS compliance
- Box type main terminals

Application:

- AC branch circuit protection
- Telecom / datacom equipment
- Lighting control
- UPS Equipment
- Alternative energy equipment
- Mobile power-generation equipment
- Railway signaling equipment
- Residential equipment
- Industrial equipment

Approvals:



LISTED (UL 489)



IEC / EN 60947-2



Pending

Pending

Technical Data

Technical Data

Product Type	Circuit Breaker			
	Approvals			
Number of Poles		1	2	3
Operating Voltages & AIC	IEC / EN 60947-2	240 Vac @ 6 kA	415 Vac @ 6 kA	415 Vac @ 6 kA
	UL 489	240Vac/ 80VDC @ 10 kA	120/240Vac/ 80Vdc @ 10 kA	240Vac 80Vdc @ 10 kA
IC = 5 kA				
Minimum Current Ratings		0.5 A	0.5 A	0.5 A
Maximum Current Ratings		32 A	32 A	32 A

Product Type	Circuit Breaker
Ambient Operating Temperature	-40 °C to +85 °C
Mounting Options	DIN rail mount
Time Delay Curves	Instantaneous, Short, Medium, Long
Endurance	10000 operations; 1500 with current, 8500 without current (IEC 60947 - 2 Clause 7.2.4.2)*
Dielectric Strength	1000 - 2000 Vac for one minute (IEC 60947 - 2 Clause 8.3.3.3)*
Rated Impulse Withstand Voltage	4 kV (IEC 60947 - 2 Clause 8.3.3.2)*
Weight	110 g per pole
Altitude	Certification tests conducted at altitude ≈ 2000 meters. Will operate at higher altitudes.
Shock	10 G (IEC 60068-2-27) Test: Fc (Edition 4.0:2008-02)
Vibration	5 G (IEC 60068-2-6) Test: Fc (Edition 7:2007-12) (sinusoidal wave)
Flammability	I3 - ignition does not persist at 850 °C after glow wire is withdrawn with an oxygen index of ≥ 28
Toxicity	F1 - Smoke index of ≤ 20 which determines the fume class
Pollution Degree	PD2 - Normally only non-conductive pollution occurs. Temporary conductivity caused by condensation is to be expected.

* Refer to the standard for details

Circuit Breaker	Wire Size mm ² (IEC)	Wire Gauge (UL)	Torque (IEC)	Torque(UL)	Comments
Main Terminals	.75 mm ² to 16 mm ²	18 - 6 - AWG	3.5 Nm	30 in-lb	Pozidriv #2 Combi head

Datasheet

HB Series Miniature Circuit Breakers

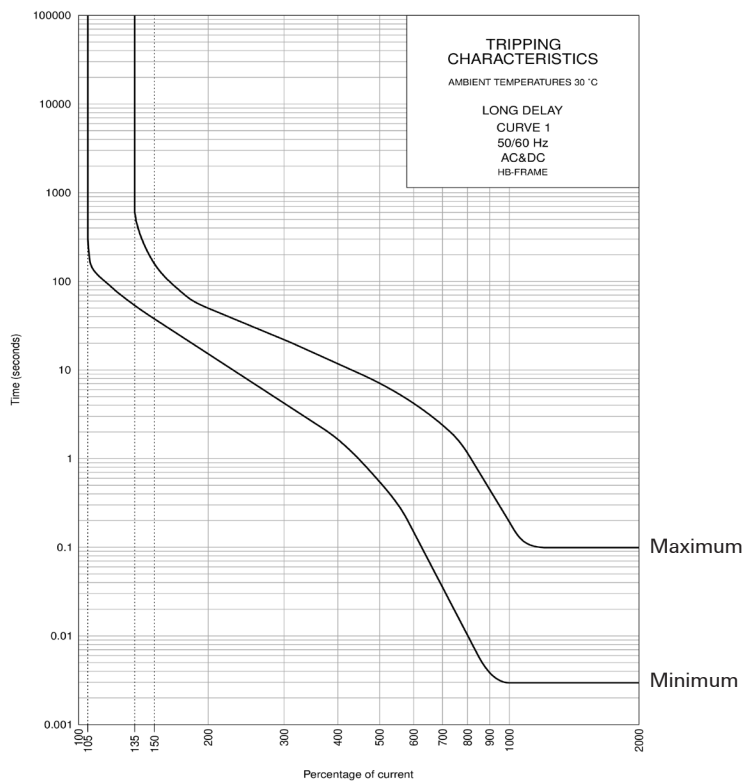
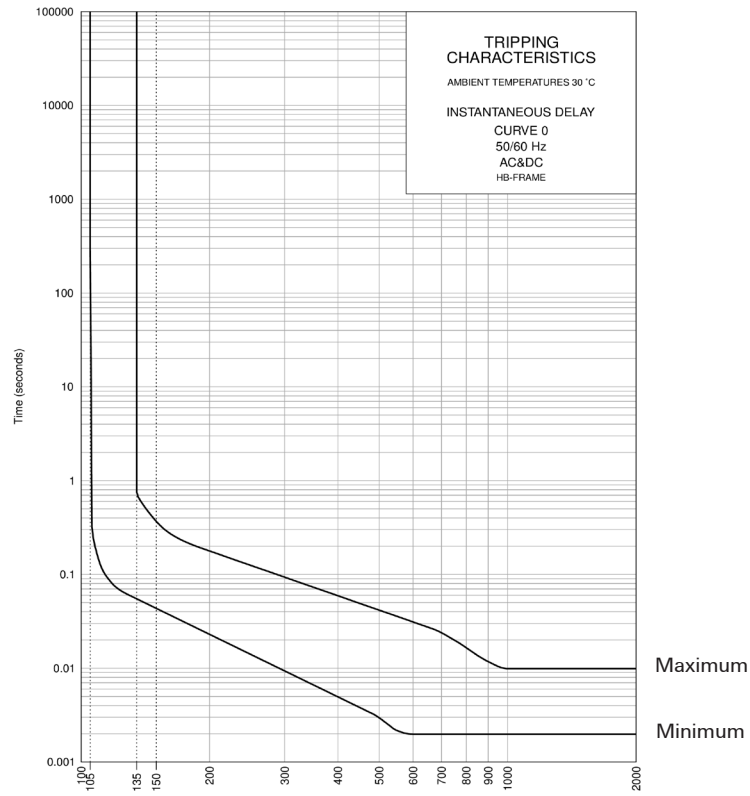
Long Code

Example Code: HB1201UC

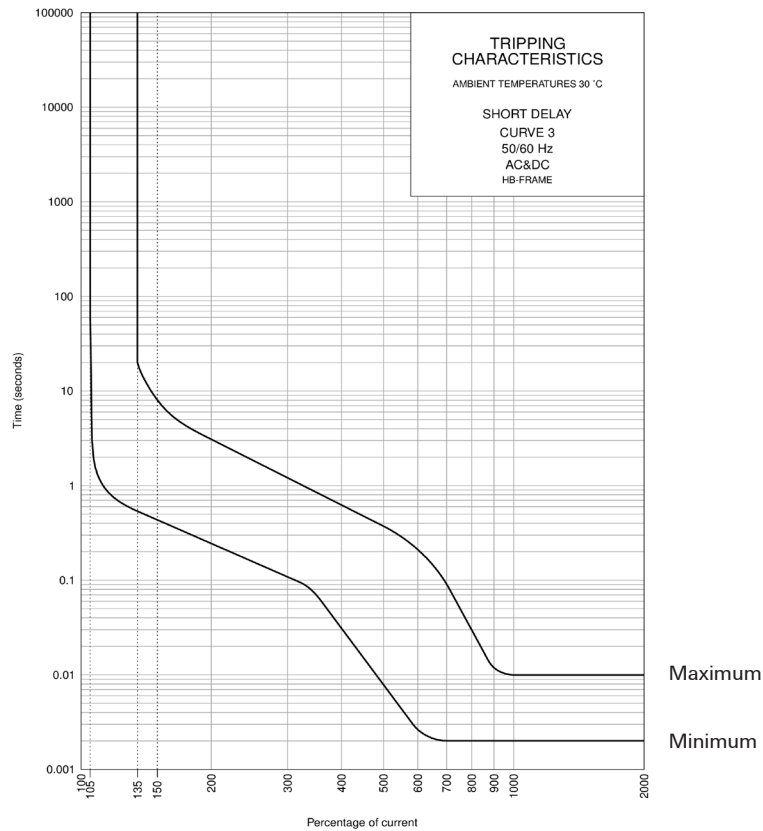
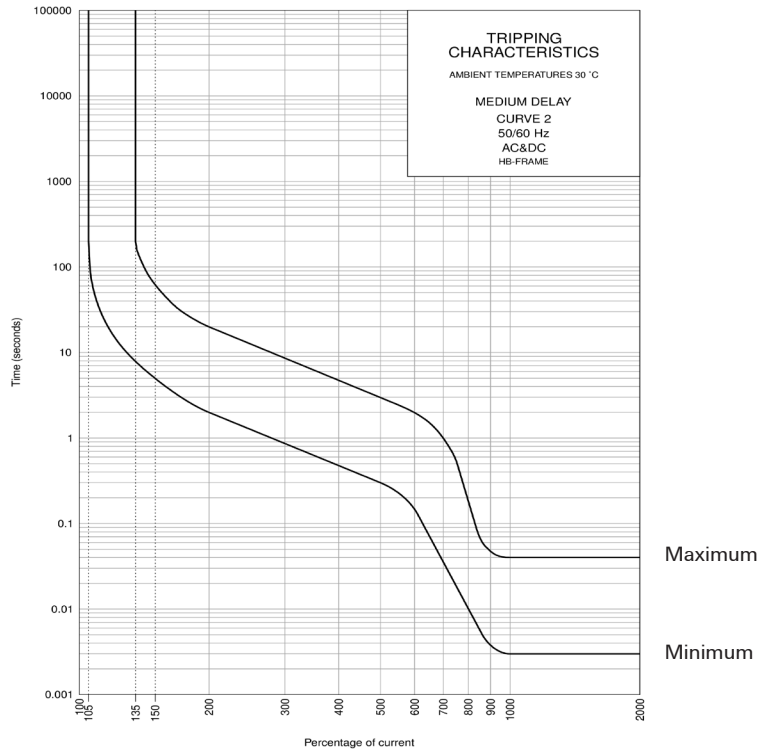
Group	1	3	5	6	7
Requirement	HB Frame	Number of poles	Time delay curve	Current rating (A) Ex: 1 Amp	Voltage rating (AC/DC)
Long Code	HB	1	2	01	UC

Group 1: Frame Type	Code	Description	Comments
	HB	Frame (13 mm circuit breaker DIN mounting 57 mm escutcheon)	Black shell
Group 2: Number of poles	Code	Description	Comments
	1	One pole	
	2	Two pole	
	3	Three pole	
Group 3: Time Delay	Code	Description	Comments
	0	Instantaneous delay	
	3	Short delay	
	2	Medium delay	
	1	Long delay	
Group 4: Current Rating	Code	Description	Comments
		0.5, 1, 2, 3, 4, 5, 6, 8, 10, 12, 15, 16, 20, 25, 30, 32	
Group 5: Voltage Rating	Code	Description	Comments
	UC	1 & 3 Pole 240Vac/80Vdc 2 Pole 120/240Vac/80Vdc	

Time Delay Curves



Standard Time Delay Curves



One pole - (240 Vac / 80 Vdc) - 13 mm total width			
Order Number	Material Number	Trip Curve	Description
2823440000	HB100.5UC	Instantaneous Delay - Curve 0	HYDRAULIC MCB UL489 240Vac/80Vdc 1P Curve 0 0.5A AC/DC
2823450000	HB1001UC	Instantaneous Delay - Curve 0	HYDRAULIC MCB UL489 240Vac/80Vdc 1P Curve 0 1.0A AC/DC
2823460000	HB1002UC	Instantaneous Delay - Curve 0	HYDRAULIC MCB UL489 240Vac/80Vdc 1P Curve 0 2.0A AC/DC
2823470000	HB1003UC	Instantaneous Delay - Curve 0	HYDRAULIC MCB UL489 240Vac/80Vdc 1P Curve 0 3.0A AC/DC
2823480000	HB1004UC	Instantaneous Delay - Curve 0	HYDRAULIC MCB UL489 240Vac/80Vdc 1P Curve 0 4.0A AC/DC
2823490000	HB1005UC	Instantaneous Delay - Curve 0	HYDRAULIC MCB UL489 240Vac/80Vdc 1P Curve 0 5.0A AC/DC
2823500000	HB1006UC	Instantaneous Delay - Curve 0	HYDRAULIC MCB UL489 240Vac/80Vdc 1P Curve 0 6.0A AC/DC
2823510000	HB1008UC	Instantaneous Delay - Curve 0	HYDRAULIC MCB UL489 240Vac/80Vdc 1P Curve 0 8.0A AC/DC
2823520000	HB1010UC	Instantaneous Delay - Curve 0	HYDRAULIC MCB UL489 240Vac/80Vdc 1P Curve 0 10.0A AC/DC
2823530000	HB1012UC	Instantaneous Delay - Curve 0	HYDRAULIC MCB UL489 240Vac/80Vdc 1P Curve 0 12.0A AC/DC
2823540000	HB1015UC	Instantaneous Delay - Curve 0	HYDRAULIC MCB UL489 240Vac/80Vdc 1P Curve 0 15.0A AC/DC
2823550000	HB1016UC	Instantaneous Delay - Curve 0	HYDRAULIC MCB UL489 240Vac/80Vdc 1P Curve 0 16.0A AC/DC
2823560000	HB1020UC	Instantaneous Delay - Curve 0	HYDRAULIC MCB UL489 240Vac/80Vdc 1P Curve 0 20.0A AC/DC
2823570000	HB1025UC	Instantaneous Delay - Curve 0	HYDRAULIC MCB UL489 240Vac/80Vdc 1P Curve 0 25.0A AC/DC
2823580000	HB1030UC	Instantaneous Delay - Curve 0	HYDRAULIC MCB UL489 240Vac/80Vdc 1P Curve 0 30.0A AC/DC
2823590000	HB1032UC	Instantaneous Delay - Curve 0	HYDRAULIC MCB UL489 240Vac/80Vdc 1P Curve 0 32.0A AC/DC
2822480000	HB110.5UC	Long Delay - Curve 1	HYDRAULIC MCB UL489 240Vac/80Vdc 1P Curve 1 0.5A AC/DC
2822490000	HB1101UC	Long Delay - Curve 1	HYDRAULIC MCB UL489 240Vac/80Vdc 1P Curve 1 1.0A AC/DC
2822500000	HB1102UC	Long Delay - Curve 1	HYDRAULIC MCB UL489 240Vac/80Vdc 1P Curve 1 2.0A AC/DC
2822510000	HB1103UC	Long Delay - Curve 1	HYDRAULIC MCB UL489 240Vac/80Vdc 1P Curve 1 3.0A AC/DC
2822520000	HB1104UC	Long Delay - Curve 1	HYDRAULIC MCB UL489 240Vac/80Vdc 1P Curve 1 4.0A AC/DC
2822530000	HB1105UC	Long Delay - Curve 1	HYDRAULIC MCB UL489 240Vac/80Vdc 1P Curve 1 5.0A AC/DC
2822540000	HB1106UC	Long Delay - Curve 1	HYDRAULIC MCB UL489 240Vac/80Vdc 1P Curve 1 6.0A AC/DC
2822550000	HB1108UC	Long Delay - Curve 1	HYDRAULIC MCB UL489 240Vac/80Vdc 1P Curve 1 8.0A AC/DC
2822560000	HB1110UC	Long Delay - Curve 1	HYDRAULIC MCB UL489 240Vac/80Vdc 1P Curve 1 10.0A AC/DC
2822570000	HB1112UC	Long Delay - Curve 1	HYDRAULIC MCB UL489 240Vac/80Vdc 1P Curve 1 12.0A AC/DC
2822580000	HB1115UC	Long Delay - Curve 1	HYDRAULIC MCB UL489 240Vac/80Vdc 1P Curve 1 15.0A AC/DC
2822590000	HB1116UC	Long Delay - Curve 1	HYDRAULIC MCB UL489 240Vac/80Vdc 1P Curve 1 16.0A AC/DC
2822600000	HB1120UC	Long Delay - Curve 1	HYDRAULIC MCB UL489 240Vac/80Vdc 1P Curve 1 20.0A AC/DC
2822610000	HB1125UC	Long Delay - Curve 1	HYDRAULIC MCB UL489 240Vac/80Vdc 1P Curve 1 25.0A AC/DC
2822620000	HB1130UC	Long Delay - Curve 1	HYDRAULIC MCB UL489 240Vac/80Vdc 1P Curve 1 30.0A AC/DC
2822630000	HB1132UC	Long Delay - Curve 1	HYDRAULIC MCB UL489 240Vac/80Vdc 1P Curve 1 32.0A AC/DC
2822000000	HB120.5UC	Medium Delay - Curve 2	HYDRAULIC MCB UL489 240Vac/80Vdc 1P Curve 2 0.5A AC/DC
2822010000	HB1201UC	Medium Delay - Curve 2	HYDRAULIC MCB UL489 240Vac/80Vdc 1P Curve 2 1.0A AC/DC
2822020000	HB1202UC	Medium Delay - Curve 2	HYDRAULIC MCB UL489 240Vac/80Vdc 1P Curve 2 2.0A AC/DC
2822030000	HB1203UC	Medium Delay - Curve 2	HYDRAULIC MCB UL489 240Vac/80Vdc 1P Curve 2 3.0A AC/DC
2822040000	HB1204UC	Medium Delay - Curve 2	HYDRAULIC MCB UL489 240Vac/80Vdc 1P Curve 2 4.0A AC/DC
2822050000	HB1205UC	Medium Delay - Curve 2	HYDRAULIC MCB UL489 240Vac/80Vdc 1P Curve 2 5.0A AC/DC
2822060000	HB1206UC	Medium Delay - Curve 2	HYDRAULIC MCB UL489 240Vac/80Vdc 1P Curve 2 6.0A AC/DC
2822070000	HB1208UC	Medium Delay - Curve 2	HYDRAULIC MCB UL489 240Vac/80Vdc 1P Curve 2 8.0A AC/DC

Datasheet

HB Series Miniature Circuit Breakers

2822080000	HB1210UC	Medium Delay - Curve 2	HYDRAULIC MCB UL489 240Vac/80Vdc 1P Curve 2 10.0A AC/DC
2822090000	HB1212UC	Medium Delay - Curve 2	HYDRAULIC MCB UL489 240Vac/80Vdc 1P Curve 2 12.0A AC/DC
2822100000	HB1215UC	Medium Delay - Curve 2	HYDRAULIC MCB UL489 240Vac/80Vdc 1P Curve 2 15.0A AC/DC
2822110000	HB1216UC	Medium Delay - Curve 2	HYDRAULIC MCB UL489 240Vac/80Vdc 1P Curve 2 16.0A AC/DC
2822120000	HB1220UC	Medium Delay - Curve 2	HYDRAULIC MCB UL489 240Vac/80Vdc 1P Curve 2 20.0A AC/DC
2822130000	HB1225UC	Medium Delay - Curve 2	HYDRAULIC MCB UL489 240Vac/80Vdc 1P Curve 2 25.0A AC/DC
2822140000	HB1230UC	Medium Delay - Curve 2	HYDRAULIC MCB UL489 240Vac/80Vdc 1P Curve 2 30.0A AC/DC
2822150000	HB1232UC	Medium Delay - Curve 2	HYDRAULIC MCB UL489 240Vac/80Vdc 1P Curve 2 32.0A AC/DC
2822960000	HB130.5UC	Short Delay - Curve 3	HYDRAULIC MCB UL489 240Vac/80Vdc 1P Curve 3 0.5A AC/DC
2822970000	HB1301UC	Short Delay - Curve 3	HYDRAULIC MCB UL489 240Vac/80Vdc 1P Curve 3 1.0A AC/DC
2822980000	HB1302UC	Short Delay - Curve 3	HYDRAULIC MCB UL489 240Vac/80Vdc 1P Curve 3 2.0A AC/DC
2822990000	HB1303UC	Short Delay - Curve 3	HYDRAULIC MCB UL489 240Vac/80Vdc 1P Curve 3 3.0A AC/DC
2823000000	HB1304UC	Short Delay - Curve 3	HYDRAULIC MCB UL489 240Vac/80Vdc 1P Curve 3 4.0A AC/DC
2823010000	HB1305UC	Short Delay - Curve 3	HYDRAULIC MCB UL489 240Vac/80Vdc 1P Curve 3 5.0A AC/DC
2823020000	HB1306UC	Short Delay - Curve 3	HYDRAULIC MCB UL489 240Vac/80Vdc 1P Curve 3 6.0A AC/DC
2823030000	HB1308UC	Short Delay - Curve 3	HYDRAULIC MCB UL489 240Vac/80Vdc 1P Curve 3 8.0A AC/DC
2823040000	HB1310UC	Short Delay - Curve 3	HYDRAULIC MCB UL489 240Vac/80Vdc 1P Curve 3 10.0A AC/DC
2823050000	HB1312UC	Short Delay - Curve 3	HYDRAULIC MCB UL489 240Vac/80Vdc 1P Curve 3 12.0A AC/DC
2823060000	HB1315UC	Short Delay - Curve 3	HYDRAULIC MCB UL489 240Vac/80Vdc 1P Curve 3 15.0A AC/DC
2823070000	HB1316UC	Short Delay - Curve 3	HYDRAULIC MCB UL489 240Vac/80Vdc 1P Curve 3 16.0A AC/DC
2823080000	HB1320UC	Short Delay - Curve 3	HYDRAULIC MCB UL489 240Vac/80Vdc 1P Curve 3 20.0A AC/DC
2823090000	HB1325UC	Short Delay - Curve 3	HYDRAULIC MCB UL489 240Vac/80Vdc 1P Curve 3 25.0A AC/DC
2823100000	HB1330UC	Short Delay - Curve 3	HYDRAULIC MCB UL489 240Vac/80Vdc 1P Curve 3 30.0A AC/DC
2823110000	HB1332UC	Short Delay - Curve 3	HYDRAULIC MCB UL489 240Vac/80Vdc 1P Curve 3 32.0A AC/DC

Two pole - (120/240 Vac / 80 Vdc) - 26 mm total width			
Order Number	Material Number	Trip Curve	Description
2823600000	HB200.5UC	Instantaneous Delay - Curve 0	HYDRAULIC MCB UL489 120/240Vac/80Vdc 2P Curve 0 0.5A AC/DC
2823610000	HB2001UC	Instantaneous Delay - Curve 0	HYDRAULIC MCB UL489 120/240Vac/80Vdc 2P Curve 0 1.0A AC/DC
2823620000	HB2002UC	Instantaneous Delay - Curve 0	HYDRAULIC MCB UL489 120/240Vac/80Vdc 2P Curve 0 2.0A AC/DC
2823630000	HB2003UC	Instantaneous Delay - Curve 0	HYDRAULIC MCB UL489 120/240Vac/80Vdc 2P Curve 0 3.0A AC/DC
2823640000	HB2004UC	Instantaneous Delay - Curve 0	HYDRAULIC MCB UL489 120/240Vac/80Vdc 2P Curve 0 4.0A AC/DC
2823650000	HB2005UC	Instantaneous Delay - Curve 0	HYDRAULIC MCB UL489 120/240Vac/80Vdc 2P Curve 0 5.0A AC/DC
2823660000	HB2006UC	Instantaneous Delay - Curve 0	HYDRAULIC MCB UL489 120/240Vac/80Vdc 2P Curve 0 6.0A AC/DC
2823670000	HB2008UC	Instantaneous Delay - Curve 0	HYDRAULIC MCB UL489 120/240Vac/80Vdc 2P Curve 0 8.0A AC/DC
2823680000	HB2010UC	Instantaneous Delay - Curve 0	HYDRAULIC MCB UL489 120/240Vac/80Vdc 2P Curve 0 10.0A AC/DC
2823690000	HB2012UC	Instantaneous Delay - Curve 0	HYDRAULIC MCB UL489 120/240Vac/80Vdc 2P Curve 0 12.0A AC/DC
2823700000	HB2015UC	Instantaneous Delay - Curve 0	HYDRAULIC MCB UL489 120/240Vac/80Vdc 2P Curve 0 15.0A AC/DC
2823710000	HB2016UC	Instantaneous Delay - Curve 0	HYDRAULIC MCB UL489 120/240Vac/80Vdc 2P Curve 0 16.0A AC/DC
2823720000	HB2020UC	Instantaneous Delay - Curve 0	HYDRAULIC MCB UL489 120/240Vac/80Vdc 2P Curve 0 20.0A AC/DC
2823730000	HB2025UC	Instantaneous Delay - Curve 0	HYDRAULIC MCB UL489 120/240Vac/80Vdc 2P Curve 0 25.0A AC/DC
2823740000	HB2030UC	Instantaneous Delay - Curve 0	HYDRAULIC MCB UL489 120/240Vac/80Vdc 2P Curve 0 30.0A AC/DC
2823750000	HB2032UC	Instantaneous Delay - Curve 0	HYDRAULIC MCB UL489 120/240Vac/80Vdc 2P Curve 0 32.0A AC/DC
2822640000	HB210.5UC	Long Delay - Curve 1	HYDRAULIC MCB UL489 120/240Vac/80Vdc 2P Curve 1 0.5A AC/DC
2822650000	HB2101UC	Long Delay - Curve 1	HYDRAULIC MCB UL489 120/240Vac/80Vdc 2P Curve 1 1.0A AC/DC
2822660000	HB2102UC	Long Delay - Curve 1	HYDRAULIC MCB UL489 120/240Vac/80Vdc 2P Curve 1 2.0A AC/DC
2822670000	HB2103UC	Long Delay - Curve 1	HYDRAULIC MCB UL489 120/240Vac/80Vdc 2P Curve 1 3.0A AC/DC
2822680000	HB2104UC	Long Delay - Curve 1	HYDRAULIC MCB UL489 120/240Vac/80Vdc 2P Curve 1 4.0A AC/DC
2822690000	HB2105UC	Long Delay - Curve 1	HYDRAULIC MCB UL489 120/240Vac/80Vdc 2P Curve 1 5.0A AC/DC
2822700000	HB2106UC	Long Delay - Curve 1	HYDRAULIC MCB UL489 120/240Vac/80Vdc 2P Curve 1 6.0A AC/DC
2822710000	HB2108UC	Long Delay - Curve 1	HYDRAULIC MCB UL489 120/240Vac/80Vdc 2P Curve 1 8.0A AC/DC
2822720000	HB2110UC	Long Delay - Curve 1	HYDRAULIC MCB UL489 120/240Vac/80Vdc 2P Curve 1 10.0A AC/DC
2822730000	HB2112UC	Long Delay - Curve 1	HYDRAULIC MCB UL489 120/240Vac/80Vdc 2P Curve 1 12.0A AC/DC
2822740000	HB2115UC	Long Delay - Curve 1	HYDRAULIC MCB UL489 120/240Vac/80Vdc 2P Curve 1 15.0A AC/DC
2822750000	HB2116UC	Long Delay - Curve 1	HYDRAULIC MCB UL489 120/240Vac/80Vdc 2P Curve 1 16.0A AC/DC
2822760000	HB2120UC	Long Delay - Curve 1	HYDRAULIC MCB UL489 120/240Vac/80Vdc 2P Curve 1 20.0A AC/DC
2822770000	HB2125UC	Long Delay - Curve 1	HYDRAULIC MCB UL489 120/240Vac/80Vdc 2P Curve 1 25.0A AC/DC
2822780000	HB2130UC	Long Delay - Curve 1	HYDRAULIC MCB UL489 120/240Vac/80Vdc 2P Curve 1 30.0A AC/DC
2822790000	HB2132UC	Long Delay - Curve 1	HYDRAULIC MCB UL489 120/240Vac/80Vdc 2P Curve 1 32.0A AC/DC
2822160000	HB220.5UC	Medium Delay - Curve 2	HYDRAULIC MCB UL489 120/240Vac/80Vdc 2P Curve 2 0.5A AC/DC
2822170000	HB2201UC	Medium Delay - Curve 2	HYDRAULIC MCB UL489 120/240Vac/80Vdc 2P Curve 2 1.0A AC/DC
2822180000	HB2202UC	Medium Delay - Curve 2	HYDRAULIC MCB UL489 120/240Vac/80Vdc 2P Curve 2 2.0A AC/DC
2822190000	HB2203UC	Medium Delay - Curve 2	HYDRAULIC MCB UL489 120/240Vac/80Vdc 2P Curve 2 3.0A AC/DC
2822200000	HB2204UC	Medium Delay - Curve 2	HYDRAULIC MCB UL489 120/240Vac/80Vdc 2P Curve 2 4.0A AC/DC
2822210000	HB2205UC	Medium Delay - Curve 2	HYDRAULIC MCB UL489 120/240Vac/80Vdc 2P Curve 2 5.0A AC/DC
2822220000	HB2206UC	Medium Delay - Curve 2	HYDRAULIC MCB UL489 120/240Vac/80Vdc 2P Curve 2 6.0A AC/DC
2822230000	HB2208UC	Medium Delay - Curve 2	HYDRAULIC MCB UL489 120/240Vac/80Vdc 2P Curve 2 8.0A AC/DC
2822240000	HB2210UC	Medium Delay - Curve 2	HYDRAULIC MCB UL489 120/240Vac/80Vdc 2P Curve 2 10.0A AC/DC

Datasheet

HB Series Miniature Circuit Breakers

2822250000	HB2212UC	Medium Delay - Curve 2	HYDRAULIC MCB UL489 120/240Vac/80Vdc 2P Curve 2 12.0A AC/DC
2822260000	HB2215UC	Medium Delay - Curve 2	HYDRAULIC MCB UL489 120/240Vac/80Vdc 2P Curve 2 15.0A AC/DC
2822270000	HB2216UC	Medium Delay - Curve 2	HYDRAULIC MCB UL489 120/240Vac/80Vdc 2P Curve 2 16.0A AC/DC
2822280000	HB2220UC	Medium Delay - Curve 2	HYDRAULIC MCB UL489 120/240Vac/80Vdc 2P Curve 2 20.0A AC/DC
2822290000	HB2225UC	Medium Delay - Curve 2	HYDRAULIC MCB UL489 120/240Vac/80Vdc 2P Curve 2 25.0A AC/DC
2822300000	HB2230UC	Medium Delay - Curve 2	HYDRAULIC MCB UL489 120/240Vac/80Vdc 2P Curve 2 30.0A AC/DC
2822310000	HB2232UC	Medium Delay - Curve 2	HYDRAULIC MCB UL489 120/240Vac/80Vdc 2P Curve 2 32.0A AC/DC
2823120000	HB230.5UC	Short Delay - Curve 3	HYDRAULIC MCB UL489 120/240Vac/80Vdc 2P Curve 3 0.5A AC/DC
2823130000	HB2301UC	Short Delay - Curve 3	HYDRAULIC MCB UL489 120/240Vac/80Vdc 2P Curve 3 1.0A AC/DC
2823140000	HB2302UC	Short Delay - Curve 3	HYDRAULIC MCB UL489 120/240Vac/80Vdc 2P Curve 3 2.0A AC/DC
2823150000	HB2303UC	Short Delay - Curve 3	HYDRAULIC MCB UL489 120/240Vac/80Vdc 2P Curve 3 3.0A AC/DC
2823160000	HB2304UC	Short Delay - Curve 3	HYDRAULIC MCB UL489 120/240Vac/80Vdc 2P Curve 3 4.0A AC/DC
2823170000	HB2305UC	Short Delay - Curve 3	HYDRAULIC MCB UL489 120/240Vac/80Vdc 2P Curve 3 5.0A AC/DC
2823180000	HB2306UC	Short Delay - Curve 3	HYDRAULIC MCB UL489 120/240Vac/80Vdc 2P Curve 3 6.0A AC/DC
2823190000	HB2308UC	Short Delay - Curve 3	HYDRAULIC MCB UL489 120/240Vac/80Vdc 2P Curve 3 8.0A AC/DC
2823200000	HB2310UC	Short Delay - Curve 3	HYDRAULIC MCB UL489 120/240Vac/80Vdc 2P Curve 3 10.0A AC/DC
2823210000	HB2312UC	Short Delay - Curve 3	HYDRAULIC MCB UL489 120/240Vac/80Vdc 2P Curve 3 12.0A AC/DC
2823220000	HB2315UC	Short Delay - Curve 3	HYDRAULIC MCB UL489 120/240Vac/80Vdc 2P Curve 3 15.0A AC/DC
2823230000	HB2316UC	Short Delay - Curve 3	HYDRAULIC MCB UL489 120/240Vac/80Vdc 2P Curve 3 16.0A AC/DC
2823240000	HB2320UC	Short Delay - Curve 3	HYDRAULIC MCB UL489 120/240Vac/80Vdc 2P Curve 3 20.0A AC/DC
2823250000	HB2325UC	Short Delay - Curve 3	HYDRAULIC MCB UL489 120/240Vac/80Vdc 2P Curve 3 25.0A AC/DC
2823200000	HB2310UC	Short Delay - Curve 3	HYDRAULIC MCB UL489 120/240Vac/80Vdc 2P Curve 3 10.0A AC/DC
2823210000	HB2312UC	Short Delay - Curve 3	HYDRAULIC MCB UL489 120/240Vac/80Vdc 2P Curve 3 12.0A AC/DC
2823220000	HB2315UC	Short Delay - Curve 3	HYDRAULIC MCB UL489 120/240Vac/80Vdc 2P Curve 3 15.0A AC/DC
2823230000	HB2316UC	Short Delay - Curve 3	HYDRAULIC MCB UL489 120/240Vac/80Vdc 2P Curve 3 16.0A AC/DC
2823240000	HB2320UC	Short Delay - Curve 3	HYDRAULIC MCB UL489 120/240Vac/80Vdc 2P Curve 3 20.0A AC/DC
2823250000	HB2325UC	Short Delay - Curve 3	HYDRAULIC MCB UL489 120/240Vac/80Vdc 2P Curve 3 25.0A AC/DC
2823260000	HB2330UC	Short Delay - Curve 3	HYDRAULIC MCB UL489 120/240Vac/80Vdc 2P Curve 3 30.0A AC/DC
2823270000	HB2332UC	Short Delay - Curve 3	HYDRAULIC MCB UL489 120/240Vac/80Vdc 2P Curve 3 32.0A AC/DC

Three pole - (240 Vac / 80 Vdc) - 39 mm total width			
Order Number	Material Number	Trip Curve	Description
2823760000	HB300.5UC	Instantaneous Delay - Curve 0	HYDRAULIC MCB UL489 240Vac/80Vdc 3P Curve 0 0.5A AC/DC
2823770000	HB3001UC	Instantaneous Delay - Curve 0	HYDRAULIC MCB UL489 240Vac/80Vdc 3P Curve 0 1.0A AC/DC
2823780000	HB3002UC	Instantaneous Delay - Curve 0	HYDRAULIC MCB UL489 240Vac/80Vdc 3P Curve 0 2.0A AC/DC
2823790000	HB3004UC	Instantaneous Delay - Curve 0	HYDRAULIC MCB UL489 240Vac/80Vdc 3P Curve 0 4.0A AC/DC
2823800000	HB3005UC	Instantaneous Delay - Curve 0	HYDRAULIC MCB UL489 240Vac/80Vdc 3P Curve 0 5.0A AC/DC
2823810000	HB3006UC	Instantaneous Delay - Curve 0	HYDRAULIC MCB UL489 240Vac/80Vdc 3P Curve 0 6.0A AC/DC
2823820000	HB3008UC	Instantaneous Delay - Curve 0	HYDRAULIC MCB UL489 240Vac/80Vdc 3P Curve 0 8.0A AC/DC
2823830000	HB3010UC	Instantaneous Delay - Curve 0	HYDRAULIC MCB UL489 240Vac/80Vdc 3P Curve 0 10.0A AC/DC
2823840000	HB3012UC	Instantaneous Delay - Curve 0	HYDRAULIC MCB UL489 240Vac/80Vdc 3P Curve 0 12.0A AC/DC
2823850000	HB3015UC	Instantaneous Delay - Curve 0	HYDRAULIC MCB UL489 240Vac/80Vdc 3P Curve 0 15.0A AC/DC
2823860000	HB3016UC	Instantaneous Delay - Curve 0	HYDRAULIC MCB UL489 240Vac/80Vdc 3P Curve 0 16.0A AC/DC
2823870000	HB3020UC	Instantaneous Delay - Curve 0	HYDRAULIC MCB UL489 240Vac/80Vdc 3P Curve 0 20.0A AC/DC
2823880000	HB3025UC	Instantaneous Delay - Curve 0	HYDRAULIC MCB UL489 240Vac/80Vdc 3P Curve 0 25.0A AC/DC
2823890000	HB3030UC	Instantaneous Delay - Curve 0	HYDRAULIC MCB UL489 240Vac/80Vdc 3P Curve 0 30.0A AC/DC
2823900000	HB3032UC	Instantaneous Delay - Curve 0	HYDRAULIC MCB UL489 240Vac/80Vdc 3P Curve 0 32.0A AC/DC
2822800000	HB310.5UC	Long Delay - Curve 1	HYDRAULIC MCB UL489 240Vac/80Vdc 3P Curve 1 0.5A AC/DC
2822810000	HB3101UC	Long Delay - Curve 1	HYDRAULIC MCB UL489 240Vac/80Vdc 3P Curve 1 1.0A AC/DC
2822820000	HB3102UC	Long Delay - Curve 1	HYDRAULIC MCB UL489 240Vac/80Vdc 3P Curve 1 2.0A AC/DC
2822830000	HB3103UC	Long Delay - Curve 1	HYDRAULIC MCB UL489 240Vac/80Vdc 3P Curve 1 3.0A AC/DC
2822840000	HB3104UC	Long Delay - Curve 1	HYDRAULIC MCB UL489 240Vac/80Vdc 3P Curve 1 4.0A AC/DC
2822850000	HB3105UC	Long Delay - Curve 1	HYDRAULIC MCB UL489 240Vac/80Vdc 3P Curve 1 5.0A AC/DC
2822860000	HB3106UC	Long Delay - Curve 1	HYDRAULIC MCB UL489 240Vac/80Vdc 3P Curve 1 6.0A AC/DC
2822870000	HB3108UC	Long Delay - Curve 1	HYDRAULIC MCB UL489 240Vac/80Vdc 3P Curve 1 8.0A AC/DC
2822880000	HB3110UC	Long Delay - Curve 1	HYDRAULIC MCB UL489 240Vac/80Vdc 3P Curve 1 10.0A AC/DC
2822890000	HB3112UC	Long Delay - Curve 1	HYDRAULIC MCB UL489 240Vac/80Vdc 3P Curve 1 12.0A AC/DC
2822900000	HB3115UC	Long Delay - Curve 1	HYDRAULIC MCB UL489 240Vac/80Vdc 3P Curve 1 15.0A AC/DC
2822910000	HB3116UC	Long Delay - Curve 1	HYDRAULIC MCB UL489 240Vac/80Vdc 3P Curve 1 16.0A AC/DC
2822920000	HB3120UC	Long Delay - Curve 1	HYDRAULIC MCB UL489 240Vac/80Vdc 3P Curve 1 20.0A AC/DC
2822930000	HB3125UC	Long Delay - Curve 1	HYDRAULIC MCB UL489 240Vac/80Vdc 3P Curve 1 25.0A AC/DC
2822940000	HB3130UC	Long Delay - Curve 1	HYDRAULIC MCB UL489 240Vac/80Vdc 3P Curve 1 30.0A AC/DC
2822950000	HB3132UC	Long Delay - Curve 1	HYDRAULIC MCB UL489 240Vac/80Vdc 3P Curve 1 32.0A AC/DC
2822320000	HB320.5UC	Medium Delay - Curve 2	HYDRAULIC MCB UL489 240Vac/80Vdc 3P Curve 2 0.5A AC/DC
2822330000	HB3201UC	Medium Delay - Curve 2	HYDRAULIC MCB UL489 240Vac/80Vdc 3P Curve 2 1.0A AC/DC
2822340000	HB3202UC	Medium Delay - Curve 2	HYDRAULIC MCB UL489 240Vac/80Vdc 3P Curve 2 2.0A AC/DC
2822350000	HB3203UC	Medium Delay - Curve 2	HYDRAULIC MCB UL489 240Vac/80Vdc 3P Curve 2 3.0A AC/DC
2822360000	HB3204UC	Medium Delay - Curve 2	HYDRAULIC MCB UL489 240Vac/80Vdc 3P Curve 2 4.0A AC/DC

Datasheet

HB Series Miniature Circuit Breakers

2822370000	HB3205UC	Medium Delay - Curve 2	HYDRAULIC MCB UL489 240Vac/80Vdc 3P Curve 2 5.0A AC/DC
2822380000	HB3206UC	Medium Delay - Curve 2	HYDRAULIC MCB UL489 240Vac/80Vdc 3P Curve 2 6.0A AC/DC
2822390000	HB3208UC	Medium Delay - Curve 2	HYDRAULIC MCB UL489 240Vac/80Vdc 3P Curve 2 8.0A AC/DC
2822400000	HB3210UC	Medium Delay - Curve 2	HYDRAULIC MCB UL489 240Vac/80Vdc 3P Curve 2 10.0A AC/DC
2822410000	HB3212UC	Medium Delay - Curve 2	HYDRAULIC MCB UL489 240Vac/80Vdc 3P Curve 2 12.0A AC/DC
2822420000	HB3215UC	Medium Delay - Curve 2	HYDRAULIC MCB UL489 240Vac/80Vdc 3P Curve 2 15.0A AC/DC
2822430000	HB3216UC	Medium Delay - Curve 2	HYDRAULIC MCB UL489 240Vac/80Vdc 3P Curve 2 16.0A AC/DC
2822440000	HB3220UC	Medium Delay - Curve 2	HYDRAULIC MCB UL489 240Vac/80Vdc 3P Curve 2 20.0A AC/DC
2822450000	HB3225UC	Medium Delay - Curve 2	HYDRAULIC MCB UL489 240Vac/80Vdc 3P Curve 2 25.0A AC/DC
2822460000	HB3230UC	Medium Delay - Curve 2	HYDRAULIC MCB UL489 240Vac/80Vdc 3P Curve 2 30.0A AC/DC
2822470000	HB3232UC	Medium Delay - Curve 2	HYDRAULIC MCB UL489 240Vac/80Vdc 3P Curve 2 32.0A AC/DC
2823280000	HB330.5UC	Short Delay - Curve 3	HYDRAULIC MCB UL489 240Vac/80Vdc 3P Curve 3 0.5A AC/DC
2823290000	HB3301UC	Short Delay - Curve 3	HYDRAULIC MCB UL489 240Vac/80Vdc 3P Curve 3 1.0A AC/DC
2823300000	HB3302UC	Short Delay - Curve 3	HYDRAULIC MCB UL489 240Vac/80Vdc 3P Curve 3 2.0A AC/DC
2823310000	HB3303UC	Short Delay - Curve 3	HYDRAULIC MCB UL489 240Vac/80Vdc 3P Curve 3 3.0A AC/DC
2823320000	HB3304UC	Short Delay - Curve 3	HYDRAULIC MCB UL489 240Vac/80Vdc 3P Curve 3 4.0A AC/DC
2823330000	HB3305UC	Short Delay - Curve 3	HYDRAULIC MCB UL489 240Vac/80Vdc 3P Curve 3 5.0A AC/DC
2823340000	HB3306UC	Short Delay - Curve 3	HYDRAULIC MCB UL489 240Vac/80Vdc 3P Curve 3 6.0A AC/DC
2823350000	HB3308UC	Short Delay - Curve 3	HYDRAULIC MCB UL489 240Vac/80Vdc 3P Curve 3 8.0A AC/DC
2823360000	HB3310UC	Short Delay - Curve 3	HYDRAULIC MCB UL489 240Vac/80Vdc 3P Curve 3 10.0A AC/DC
2823370000	HB3312UC	Short Delay - Curve 3	HYDRAULIC MCB UL489 240Vac/80Vdc 3P Curve 3 12.0A AC/DC
2823380000	HB3315UC	Short Delay - Curve 3	HYDRAULIC MCB UL489 240Vac/80Vdc 3P Curve 3 15.0A AC/DC
2823390000	HB3316UC	Short Delay - Curve 3	HYDRAULIC MCB UL489 240Vac/80Vdc 3P Curve 3 16.0A AC/DC
2823400000	HB3320UC	Short Delay - Curve 3	HYDRAULIC MCB UL489 240Vac/80Vdc 3P Curve 3 20.0A AC/DC
2823410000	HB3325UC	Short Delay - Curve 3	HYDRAULIC MCB UL489 240Vac/80Vdc 3P Curve 3 25A AC/DC
2823420000	HB3330UC	Short Delay - Curve 3	HYDRAULIC MCB UL489 240Vac/80Vdc 3P Curve 3 30A AC/DC
2823430000	HB3332UC	Short Delay - Curve 3	HYDRAULIC MCB UL489 240Vac/80Vdc 3P Curve 3 32A AC/DC

Mounting Options

If the product is not vertically mounted in the normal DIN-rail mounting orientation, a rating factor must be applied. Figure below shows a diagram of the rating factor to apply. The published curves for these circuit breaker products are produced with the circuit breaker in the vertical mounting position. The rating factor only applies to the must hold and must trip points of the curve as the other parts (instantaneous trip point) stay largely unaffected.

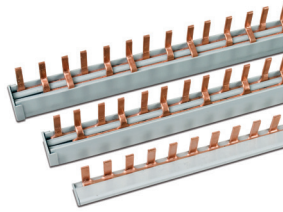
It is important to note that in environments that are exposed to a high degree of vibration, the cables that connect to the circuit breaker must be securely held in place, as the breaker is not designed to carry the weight of the cables. A maximum of 35N can be applied to the terminal area, in a direction perpendicular to the mounting axis.

Optional Accessories:

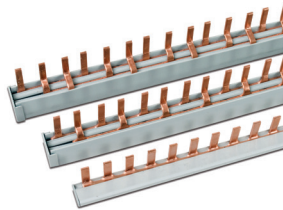
- Handle Lock
- Busbar
- Power Lugs

Accessories

Type	Order #
Bus - bar (1 pole, insulated, 1 Meter Length)	7940099731
Bus bar end cap, 1 pole	7940099740



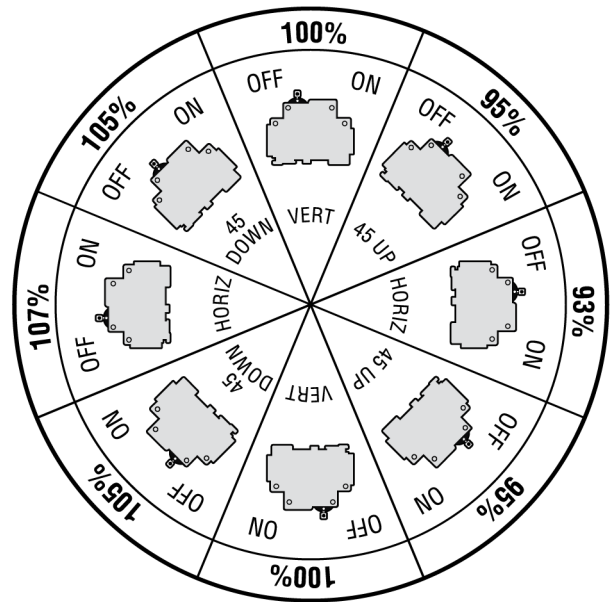
Type	Order #
Bus - bar (2 pole, insulated, 1 Meter Length)	7940099739
Bus - bar (3 pole, insulated, 1 Meter Length)	7940099738
Bus - bar end cap, 2/3 pole	7940099741



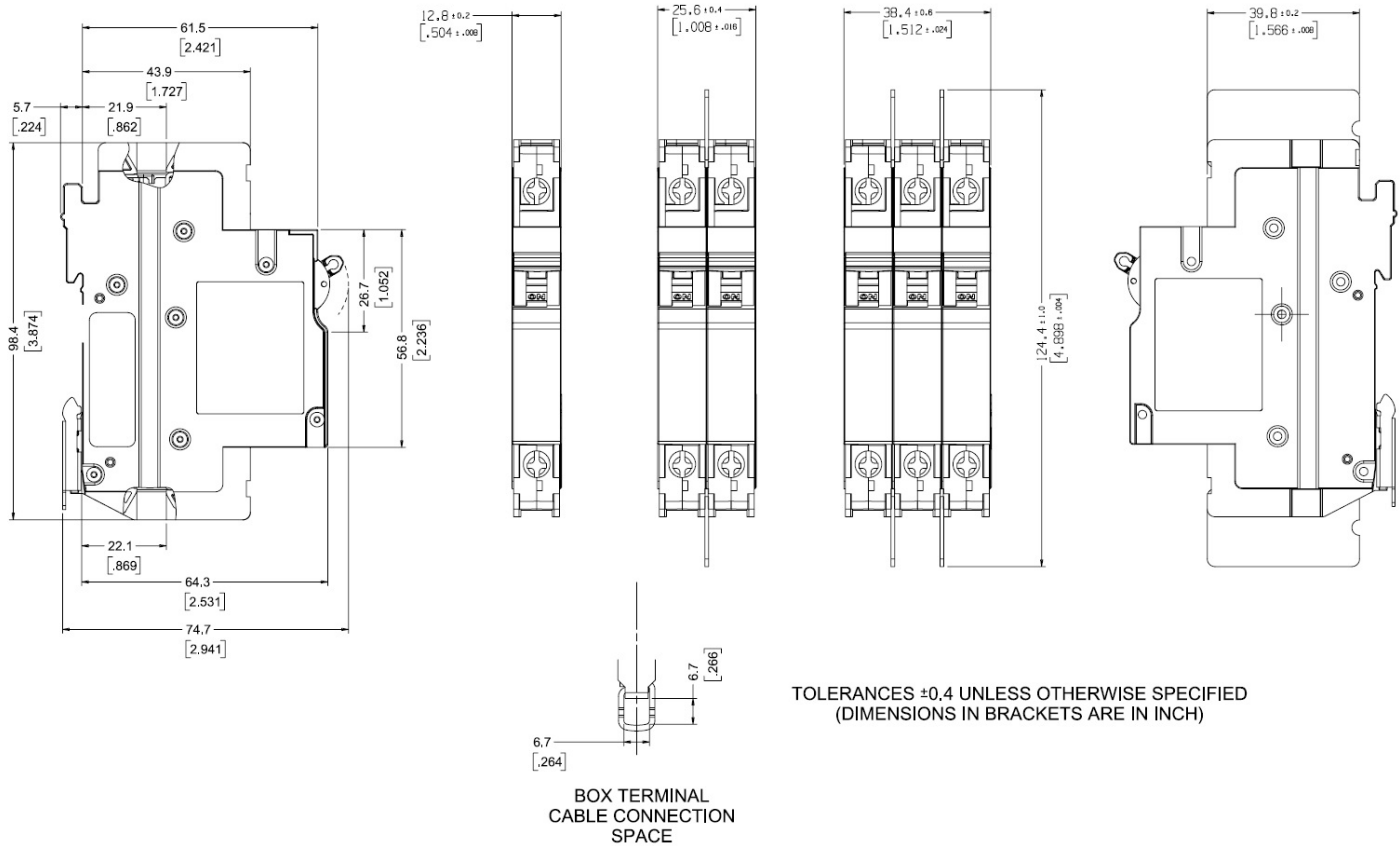
Type	Order #
Power lug, straight (14 mm)	7940099736
Power lug, 90° (14mm)	7940099737
Power lug, straight (32 mm)	7940099746
Power lug, 90 (32mm)	7940115090



Type	Order #
Lock-out handle	7940099734



Outline Dimensions: DIN mount



TOLERANCES ±0.4 UNLESS OTHERWISE SPECIFIED
(DIMENSIONS IN BRACKETS ARE IN INCH)

Weidmuller, Ltd
10 Spy Court
Markham, Ontario L3R 5H6
Telephone: (800) 268-4080
Email: orders_can@weidmuller.com
Website: www.weidmuller.ca

Weidmuller, SA de CV
Bldv. Hermanos Serdán 698,
Col. San Rafael Oriente
Puebla, Puebla, Mexico C.P. 72029
Telephone: 01 222 2686267
Email: clientes@weidmuller.com
Website: www.weidmuller.com.mx

Weidmuller, Inc
821 Southlake Blvd.
Richmond, Virginia 23236
Telephone: (800) 849-9343
Email: info@weidmuller.com
Website: www.weidmuller.com

2/22 LIT1988

X-ON Electronics

Largest Supplier of Electrical and Electronic Components

Click to view similar products for [Circuit Breakers](#) category:

Click to view products by [Weidmuller](#) manufacturer:

Other Similar products are found below :

[LUGZX66-1-61-20.0-44](#) [M39019/01-221](#) [M39019/01-323](#) [M39019/01-336](#) [M39019/02-248](#) [M39019/02-311](#) [M39019/02-316](#) [M39019/04-249S](#) [M39019/05-246S](#) [M39019/06-254S](#) [M55629/1-016](#) [M55629/1-018](#) [M55629/1-021](#) [M55629/1-033](#) [M55629/1-036](#) [M55629/1-046](#) [M55629/1-048](#) [M55629/1-058](#) [M55629/1-067](#) [M55629/1-070](#) [M55629/1-079](#) [M55629/1-084](#) [M55629/1-085](#) [M55629/1-101](#) [M55629/1-109](#) [M55629/11-102](#) [M55629/1-120](#) [M55629/12-045](#) [M55629/12-046](#) [M55629/1-330](#) [M55629/1-366](#) [M55629/1-387](#) [M55629/1-401](#) [M55629/2-022](#) [M55629/2-030](#) [M55629/2-072](#) [M55629/2-082](#) [M55629/2-099](#) [M55629/2-101](#) [M55629/2-102](#) [M55629/21-BM-BM](#) [M55629/21-HM-HM](#) [M55629/21-NS-NS](#) [M55629/22-NR-NR-NR](#) [M55629/22-RS-RS-RS](#) [M55629/2-347](#) [M55629/2-401](#) [M55629/2-413](#) [M55629/3-030](#) [M55629/3-050](#)