

AC Outlet DIN-Rail Mountable Receptacles



DIN-rail receptacles, 5A, 15A and 20A power outlets, provide a convenient power source for portable computers or test devices for in-the-panel troubleshooting. They mount on standard 35mm DIN-rail. The terminations accept slotted or Phillips screwdrivers. The mounting foot includes a latching lock - slide it open, mount the module on the DIN-rail and slide the lock closed.

- Easily snaps onto 35mm DIN-rail
- Panel mountable, model dependent
- 5A, 15A or 20A versions
- Easy to wire
- Available with ground fault current interrupt (GFCI) or standard outlets
- Optional power-on indication with GFCI*
- NEMA rated enclosure with UL94 VO flammability rating
- UL508A, cULus, and cURus and CSA* approved
- Latching mounting foot makes installation and removal from DIN-rail easy

*Applies to part number 6720005430

Weidmüller, Canada

10 Spy Court
Markham, Ontario L3R 5H6
Telephone: (800) 268-4080
Facsimile: (877) 300-5635
Email: info1@weidmuller.ca
Website: www.weidmuller.ca

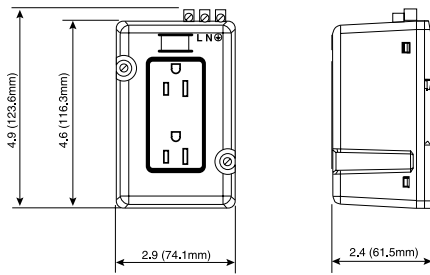
Weidmüller, Mexico

Bldv. Hermanos Serdán 698
Col. San Rafael Oriente
Puebla, Puebla, Mexico
C.P. 72029
Telephone: 01 222 2686267
Facsimile: 01 222 2686219
Email: clientes@weidmuller.com.mx
Website: www.weidmuller.com.mx

Weidmüller, United States

821 Southlake Blvd.
Richmond, Virginia 23236
Telephone: (800) 849-9343
Facsimile: (804) 379-2593
Email: info@weidmuller.com
Website: www.weidmuller.com

Dimensional Drawing



15 Amp Duplex



15 Amp GFCI



Technical data

Voltage	120 VAC nominal, 125 VAC max.
Current	15A max.
Operating Frequency	50 - 60 Hz
Dielectric Voltage	Withstands 2000V per UL498
Short-Circuit Current Rating (SCCR)	10 kA
Current Interrupting	2 kA
Trip Level	N/A
Termination Wire Size	20 - 10 AWG (solid or stranded, copper only)
Terminal Torque	0.79Nm/7 lb.-in.
Terminations	Screw terminals, slotted
Temperature:	
Operating	-25°C to 60°C
Storage	-35°C to 80°C
Material Listing	
Enclosure Cover, Flammibility	PBT/polycarbonate blend, UL94 rating V0 @ .63mm
Enclosure Base, Flammibility	Polyamide 6/6 30% GF, UL94 rating V0 @ .63mm
Spring	Stainless Steel
Mounting	TS35 DIN-Rail or direct panel mount
Width	74.1mm/2.9 in.
Length	123.6mm/4.9 in.
Height	61.5mm/2.4 in.

Voltage	120 VAC nominal, 125 VAC max.
Current	15A max.
Operating Frequency	50 - 60 Hz
Dielectric Voltage	Withstands 2000V per UL498
Short-Circuit Current Rating (SCCR)	10 kA
Current Interrupting	2 kA
Trip Level	N/A
Termination Wire Size	20 - 10 AWG (solid or stranded, copper only)
Terminal Torque	0.79Nm/7 lb.-in.
Terminations	Screw terminals, slotted
Temperature:	
Operating	-25°C to 60°C
Storage	-35°C to 80°C
Material Listing	
Enclosure Cover, Flammibility	PBT/polycarbonate blend, UL94 rating V0 @ .63mm
Enclosure Base, Flammibility	Polyamide 6/6 30% GF, UL94 rating V0 @ .63mm
Spring	Stainless Steel
Mounting	TS35 DIN-Rail or direct panel mount
Width	74.1mm/2.9 in.
Length	123.6mm/4.9 in.
Height	61.5mm/2.4 in.

Voltage	120 VAC nominal, 125 VAC max.
Current	15A max.
Operating Frequency	50 - 60 Hz
Dielectric Voltage	Withstands 1500V per UL498
Short-Circuit Current Rating (SCCR)	10 kA
Current Interrupting	10 kA
Trip Level	5mA ±1mA
Termination Wire Size	20 - 10 AWG (solid or stranded, copper only)
Terminal Torque	0.79Nm/7 lb.-in.
Terminations	Screw terminals, slotted
Temperature:	
Operating	-25°C to 60°C
Storage	-35°C to 80°C
Material Listing	
Enclosure Cover, Flammibility	PBT/polycarbonate blend, UL94 rating V0 @ .63mm
Enclosure Base, Flammibility	Polyamide 6/6 30% GF, UL94 rating V0 @ .63mm
Spring	Stainless Steel
Mounting	TS35 DIN-Rail or direct panel mount
Width	74.1mm/2.9 in.
Length	123.6mm/4.9 in.
Height	61.5mm/2.4 in.

Approvals/Certifications

Enclosure Type	NEMA WD6, 5-15R
----------------	-----------------

Description

• cULus Listed to UL508A and C22.2 No. 14 File E223801
NEMA WD6, 5-15R

Description

• cULus Listed to UL508A and C22.2 No. 14 File E223801
NEMA WD6, 5-15R

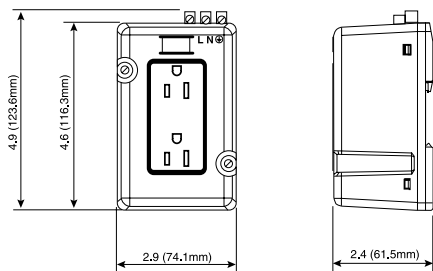
Ordering data

--	--

Type	Part No.
DRAC DP 15	6720005421

Type	Part No.
DRAC GF 15	6720005422

Dimensional Drawing



20 Amp Duplex



20 Amp GFCI



Technical data

Voltage	120 VAC nominal, 125 VAC max.
Current	20A max.
Operating Frequency	50 - 60 Hz
Dielectric Voltage	Withstands 2000V per UL498
Short-Circuit Current Rating (SCCR)	10 kA
Current Interrupting	2 kA
Trip Level	N/A
Termination Wire Size	20 - 10 AWG (solid or stranded, copper only)
Terminal Torque	0.79Nm/7 lb.-in.
Terminations	Screw terminals, slotted
Temperature:	
Operating	-25°C to 60°C
Storage	-35°C to 80°C
Material Listing	
Enclosure Cover, Flammibility	PBT/polycarbonate blend, UL94 rating V0 @ .63mm
Enclosure Base, Flammibility	Polyamide 6/6 30% GF, UL94 rating V0 @ .63mm
Spring	Stainless Steel
Mounting	TS35 DIN-Rail or direct panel mount
Width	74.1mm/2.9 in.
Length	123.6mm/4.9 in.
Height	61.5mm/2.4 in.

Voltage	120 VAC nominal, 125 VAC max.
Current	20A max.
Operating Frequency	50 - 60 Hz
Dielectric Voltage	Withstands 2000V per UL498
Short-Circuit Current Rating (SCCR)	10 kA
Current Interrupting	2 kA
Trip Level	N/A
Termination Wire Size	20 - 10 AWG (solid or stranded, copper only)
Terminal Torque	0.79Nm/7 lb.-in.
Terminations	Screw terminals, slotted
Temperature:	
Operating	-25°C to 60°C
Storage	-35°C to 80°C
Material Listing	
Enclosure Cover, Flammibility	PBT/polycarbonate blend, UL94 rating V0 @ .63mm
Enclosure Base, Flammibility	Polyamide 6/6 30% GF, UL94 rating V0 @ .63mm
Spring	Stainless Steel
Mounting	TS35 DIN-Rail or direct panel mount
Width	74.1mm/2.9 in.
Length	123.6mm/4.9 in.
Height	61.5mm/2.4 in.

Voltage	120 VAC nominal, 125 VAC max.
Current	20A max.
Operating Frequency	50 - 60 Hz
Dielectric Voltage	Withstands 1500V per UL498
Short-Circuit Current Rating (SCCR)	10 kA
Current Interrupting	10 kA
Trip Level	5mA ±1mA
Termination Wire Size	20 - 10 AWG (solid or stranded, copper only)
Terminal Torque	0.79Nm/7 lb.-in.
Terminations	Screw terminals, slotted
Temperature:	
Operating	-25°C to 60°C
Storage	-35°C to 80°C
Material Listing	
Enclosure Cover, Flammibility	PBT/polycarbonate blend, UL94 rating V0 @ .63mm
Enclosure Base, Flammibility	Polyamide 6/6 30% GF, UL94 rating V0 @ .63mm
Spring	Stainless Steel
Mounting	TS35 DIN-Rail or direct panel mount
Width	74.1mm/2.9 in.
Length	123.6mm/4.9 in.
Height	61.5mm/2.4 in.

Approvals/Certifications

Enclosure Type

Description

Ⓢ cULus Listed to UL508A and C22.2 No. 14 File E223801

NEMA WD6, 5-20R

Description

Ⓢ cULus Listed to UL508A and C22.2 No. 14 File E223801

NEMA WD6, 5-20R

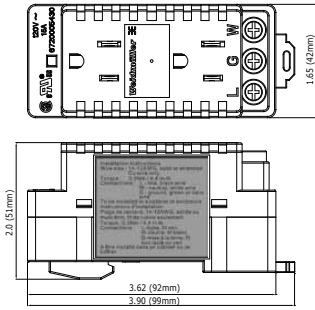
Ordering data

--	--

Type	Part No.
DRAC DP 20	6720005420

Type	Part No.
DRAC GF 20	6720005423

Dimensional Drawing



15 Amp Duplex w/LED



This new DIN-rail mountable duplex receptacle makes adding a 120V maintenance AC outlet to control cabinets quick and easy. It mounts on standard 35mm DIN-rail and requires just 42mm of rail space. An LED indicates that 120V is applied to the module. The terminations accept slotted or Phillips screwdrivers. The mounting foot includes a latching lock – slide it open, mount the module on the DIN-rail and slide the lock closed.


- requires just 42mm of DIN-rail
- includes power status LED
- latching mounting foot makes installation and removal from DIN-rail easy
- CSA certified and cURus recognized


Technical data

Voltage	120 VAC nominal
Current	15A max.
Wire Size (AWG)	14-12 AWG (Solid or stranded, copper only)
Stripping Length mm/in.	8.8-11 / 0.347-0.433
Terminations	Screw terminals, slotted or Phillips
	"L":line "W":neutral "G":ground
Terminal Torque	0.5Nm/4.4 in-lb
Mounting	TS35 DIN-Rail
Width	42mm/1.65 in.
Length	99mm/3.90 in.
Height	51mm/2.01 in.

Approvals/Certifications

Description

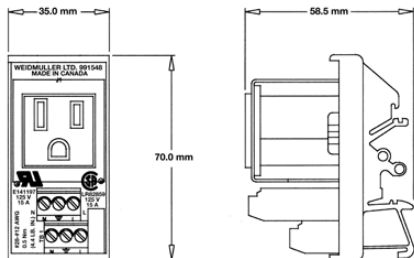
 CSA certified, file 251163, Project 2345434, according to C22.2 No. 42

 cURus recognized, file E340886, according to UL498 and C22.2 No. 182.3

Ordering data

Type	Part No.
DUPLEX 120VAC OUTLET W/LED	6720005430

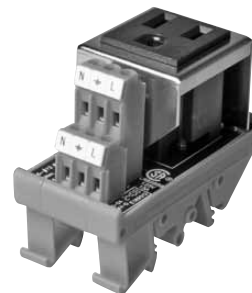
Dimensional Drawing



5 Amp Simplex w/Circuit Breaker



15 Amp Simplex w/o Circuit Breaker



Technical data

Voltage
Current
Wire Size (AWG)
Stripping Length mm/in.
Terminal Torque
Mounting
Width
Length
Height

120 VAC
5A max.
26 - 12 AWG (0.14 - 4.0mm ²)
6mm
0.5-0.6 Nm
TS32 or TS35 DIN-Rail
35mm/1.38 in.
70mm/2.76 in.
58.5mm/2.30 in.

120 VAC
15A max.
26 - 12 AWG (0.14 - 4.0mm ²)
6mm
0.5-0.6 Nm
TS32 or TS35 DIN-Rail
35mm/1.38 in.
70mm/2.76 in.
58.5mm/2.30 in.

Approvals/Certifications

--

Description

UL LR-229352, UL E252394

Description

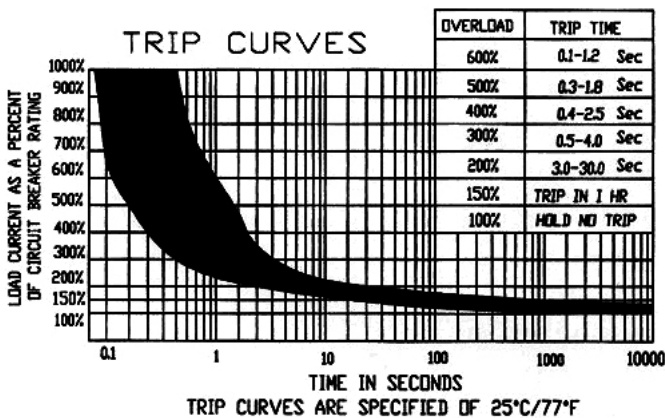
UL LR-229352, UL E252394

Ordering data

--

Type	Part No.
Single outlet with circuit breaker (supplemental protector with manual reset via push button)	9915480001

Type	Part No.
Single outlet without circuit breaker	9915480000



X-ON Electronics

Largest Supplier of Electrical and Electronic Components

Click to view similar products for [AC Power Entry Modules](#) category:

Click to view products by [Weidmuller](#) manufacturer:

Other Similar products are found below :

[0098.0050](#) [6167.0002](#) [6609100-2](#) [7-6609955-2](#) [FKI2-50-6/M5](#) [FN361-6-06](#) [FN389-4-22](#) [FN9226B-6-02](#) [FN9233S1-10-06](#) [FN9233S1-8-06](#)
[FN9233S1B-8-06](#) [FN9233S1R-1-06](#) [FN9233S1R-12-06](#) [FN9233SB-1-06](#) [FN9233SB-12-06](#) [FN9233SB-8-06](#) [FN9233SR-10-06](#) [FN9244B-15-06HI](#) [FN9244EB-3-06](#) [FN9244EB-8-06](#) [FN9244ER-15-06](#) [FN9244ER-8-06](#) [FN9244ES1-8-06](#) [FN9244ESB-8-06](#) [FN9244R-12-06](#)
[FN9244S1-12-06](#) [FN9244S1R-3-06](#) [FN9244SB-8-06](#) [FN9244SR-6-06](#) [FN9244U-3-06](#) [FN9244U-8-06](#) [8-6609940-2](#) [PE00SSSXB](#) [Fuse-H-EUR-1](#) [Fuse-H-USA-1](#) [PM00XD000](#) [A-0701-HT-H](#) [15EJMS8](#) [1-6609941-2](#) [200JM6-2](#) [CA121003-6](#) [SK-1015\(F1-5\)](#) [161-R3015-E](#) [1-6609153-2](#) [FN323-1-05](#) [FN9233B-8-06](#) [FN9233EB-1-06](#) [FN9233ES1R-10-06](#) [FN9233R-12-06](#) [FN9233S-10-06](#)