

WAS6 TTA

Weidmüller Interface GmbH & Co. KG

Klingenbergstraße 26

D-32758 Detmold

Germany

www.weidmueller.com



Circuit symbol

WAS/WAZ6 TTA is a universal signal converter and trip amplifier that can be configured on the PC. Combines the functions of isolation, transmission, linearisation and trip amplification in a single module.

These exceptional characteristics and outstanding configurability combine to make the TTA truly unique. The TTA functions with stability and precision under a wide range of voltages and ambient temperatures. It is compatible with all standard sensor types.

- Universal input signals: temperature signals such as resistance thermometer, thermocouple, potentiometer, frequency transmitter, DC voltage signals and current signals
- Loop-powered or passive input
- Wide-range power supply: 18 – 264 V AC/DC
- User-defined linearization
- Inputs and outputs can be configured on PC
- Combined analogue and relay output
- Ambient temperature range: -40 °C ...70 °C

The CBX200 USB interface is used to connect to the PC. The WAS/WAZ6 TTA is also offered as an option with ATEX Zone 2 and UL C1D2 approvals.

General ordering data

Version	Input : universal U, I, R,9, Output : I/U universal, 2 x relays
Order No.	8939670000
Type	WAS6 TTA
GTIN (EAN)	4032248721078
Qty.	1 pc(s).

WAS6 TTA

Weidmüller Interface GmbH & Co. KG

Klingenbergstraße 26

D-32758 Detmold

Germany

www.weidmueller.com

Technical data

Dimensions and weights

Depth	112.4 mm	Depth (inches)	4.425 inch
Width	45 mm	Width (inches)	1.772 inch
Length	100 mm	Length (inches)	3.937 inch
Weight	215 g	Net weight	256.1 g

Temperatures

Storage temperature	-40 °C...85 °C	Operating temperature	-40 °C...70 °C
Humidity	5...95 %, no condensation		

Probability of failure

MTTF	138 Jahre
------	-----------

Environmental Product Compliance

REACH SVHC	Lead 7439-92-1
------------	----------------

Input

Input current	-20...+50 mA (min. interval 0.4 mA)	Input frequency	adjustable, 2 Hz...100 kHz
Input voltage	-200...500 mV (min. 4 mV span), -20...50 V DC (min. 0.5 V span)	Number of inputs	1
Potentiometer	10...50 Ω, 50...100 Ω, 100...200 Ω, 200...400 Ω, 400...800 Ω, 800 Ω...2 kΩ, 2...6.5 kΩ, 6.5...100 Ω	Resistance	10 Ω...5 kΩ
Sensor	Thermocouples: B, E, J, K, L, N, R, S, T (IEC 60584), PT100, PT1000, (EN 60571) Ni100, Ni1000, (JIS 1604), Cu10, Cu25, Cu50, Cu100 (DIN 43760) 2-/3-/4-wire	Sensor supply	24 V DC / 22 mA
Temperature input range	Configurable, B: +100...+1820 °C, E: -270...+1000 °C, J: -270...+1200 °C, K: -150...+1372 °C, L: +100...+900 °C, N: -180...+1300 °C, R: -50...+1768 °C, S: -50...+1768 °C, T: -270...+400 °C, U: -200...+600 °C, User defined		

WAS6 TTA

Weidmüller Interface GmbH & Co. KG

Klingenbergstraße 26

D-32758 Detmold

Germany

www.weidmueller.com

Technical data

Output (digital)

Alarm function	Top and bottom limit values, window range, Over-temperature, Alarm mode: delay, switch on or switch on/off, Holding function can be activated, Delayed 0...4200 s	Continuous current	2 A
Max. switching voltage, AC	250 V	Number of digital outputs	2
Type	2 x 1 CO contact (hard gold-plated), Process alarms (4x) with hysteresis, with alarm delay (configurable) 0...180 s		

Output (analogue)

Load resistance current	< 700 Ω	Load resistance voltage	> 10 k Ω @ 0...10 V / > 20 k Ω @ -10...+10 V
Number of analogue outputs	1	Output current	adjustable between 0 and 20 mA (min. span of 5 mA)
Output voltage	adjustable between -10...+10 V (min. span 2.5 V)	Signal output	direct or inverted
Transmit function	Linear, $x^{1/2}$, $x^{3/2}$, $x^{5/2}$ or user-defined curve (101 points)		

General data

Accuracy	< 0.1 % span (DC, RTD); 0.2 % span (or 1 °C) + CJ failure	Configuration	Using free Windows software, TTA Set Software
Power consumption	< 3.5 W	Step response time	50 ms...1 sec (RTD, mV inputs), 110 ms...1 sec (V, mA inputs)
Temperature coefficient	< 0.1 % / K (DC, RTD); < 0.1 % FSR / K + CJ error 0.07 °C/K (thermocouples)	Type of connection	Screw connection
Voltage supply	18...264 V AC/DC		

Insulation coordination

Clearance & creepage distances	≥ 5.5 mm (1 mm input/output)	EMC standards	EN 55011, EN 61000-6
Impulse withstand voltage	6 kV	Insulation voltage	2.5 kV
Pollution severity	2	Rated voltage	300 V
Surge voltage category	III		

Connection data

Type of connection	Screw connection	Stripping length, rated connection	7 mm
Tightening torque, min.	0.4 Nm	Tightening torque, max.	0.5 Nm
Clamping range, rated connection	2.5 mm ²	Clamping range, min.	0.5 mm ²
Clamping range, max.	2.5 mm ²		

WAS6 TTA

Weidmüller Interface GmbH & Co. KG
 Klingenbergstraße 26
 D-32758 Detmold
 Germany

www.weidmueller.com

Technical data

Classifications

ETIM 6.0	EC002653	ETIM 7.0	EC002653
ETIM 8.0	EC002653	ECLASS 9.0	27-21-01-20
ECLASS 9.1	27-21-01-90	ECLASS 10.0	27-21-01-20
ECLASS 11.0	27-21-01-20		

Tender specification sheets

Long specification	Short specification	<p>Universal measurement isolating converters and trip amplifiers; can be configured with PC</p> <p>Universal measurement isolating converters and trip amplifiers in 45 mm width with external supply for voltage and sensors, for transmitting and isolating analogue DC current</p> <p>-20 to 50 mA, voltages -200 to 500 mV/ -20 to 50 V, 2-/3-/4-wire RTD, resistors, thermocouples according to IEC 584 and frequencies up to 100 kHz(2- / 3-wire sensors).</p> <p>Two switching outputs (CO contact) for alarms, analogue DC voltages (-10 to +10 V) and current outputs (0 to 20 mA) are available on the output side.</p> <p>The component can be configured with a PC using the proprietary TTA-Set software.</p>
--------------------	---------------------	---

WAS6 TTA

Weidmüller Interface GmbH & Co. KG
 Klingenbergstraße 26
 D-32758 Detmold
 Germany

www.weidmueller.com

Technical data

Important note

Product information

WAS/WAZ6 TTA is a universal signal converter and trip amplifier that can be configured on the PC. Combines the functions of isolation, transmission, linearisation and trip amplification in a single module. These exceptional characteristics and outstanding configurability combine to make the TTA truly unique. The TTA functions with stability and precision under a wide range of voltages and ambient temperatures. It is compatible with all standard sensor types.

- Universal input signals: temperature signals such as resistance thermometer, thermocouple, potentiometer, frequency transmitter, DC voltage signals and current signals
- Loop-powered or passive input
- Wide-range power supply: 18 – 264 V AC/DC
- User-defined linearization
- Inputs and outputs can be configured on PC
- Combined analogue and relay output
- Ambient temperature range: -40 °C ...70 °C

The CBX200 USB interface is used to connect to the PC.
 The WAS/WAZ6 TTA is also offered as an option with ATEX Zone 2 and UL C1D2 approvals.

Approvals

Approvals



ROHS	Conform
UL File Number Search	E141197

Downloads

Approval/Certificate/Document of Conformity	ATEX certification DNV GL Certificate Declaration of Conformity
Engineering Data	STEP
Engineering Data	EPLAN, WSCAD
Software	Install_TTASet_V107.zip
User Documentation	Manual english, deutsch, france Instruction sheet
Catalogues	Catalogues in PDF-format
Brochures	

WAS6 TTA

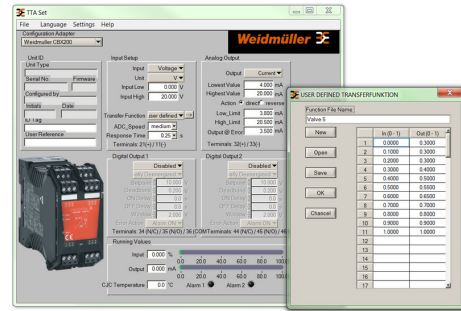
Weidmüller Interface GmbH & Co. KG
 Klingenbergstraße 26
 D-32758 Detmold
 Germany

Drawings

www.weidmueller.com



Screenshot of TTA Set Software

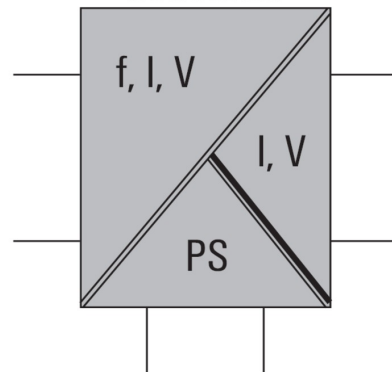


example of user defined transfer function for assigning customized output values

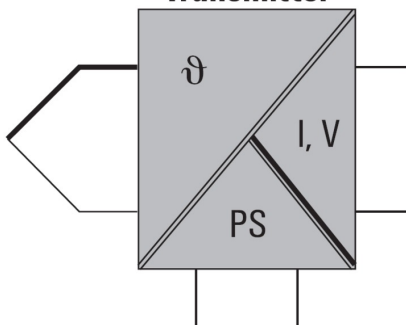


connection to your PC

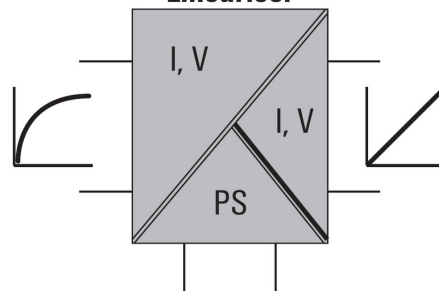
Converter



Transmitter



Lineariser



WAS6 TTA

Weidmüller Interface GmbH & Co. KG
Klingenbergstraße 26
D-32758 Detmold
Germany

www.weidmueller.com

Accessories

Configuration interfaces



General ordering data

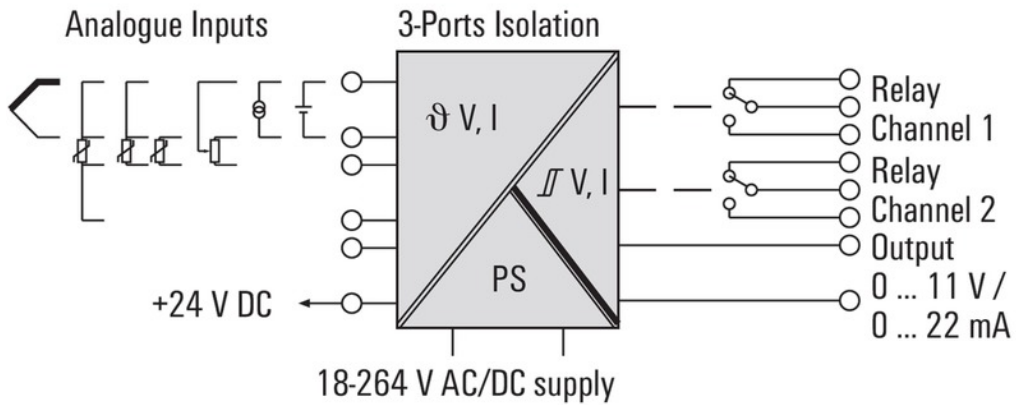
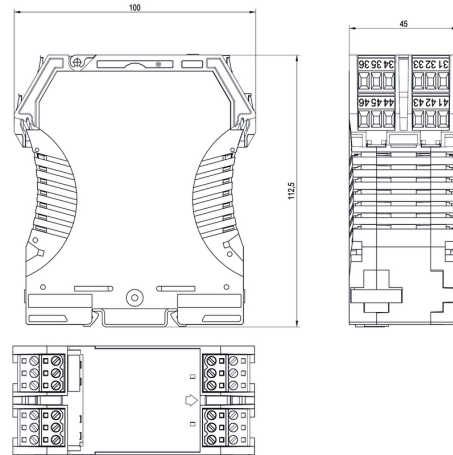
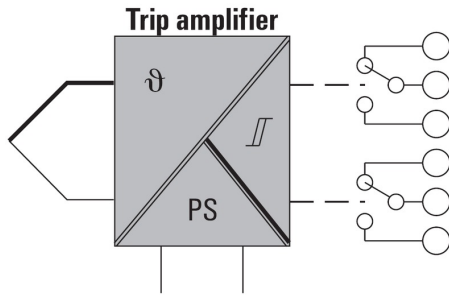
Type	CBX200 USB
Order No.	8978580000
GTIN (EAN)	4032248813759
Qty.	1 pc(s).

WAS6 TTA

Weidmüller Interface GmbH & Co. KG
 Klingenbergstraße 26
 D-32758 Detmold
 Germany

www.weidmueller.com

Drawings



X-ON Electronics

Largest Supplier of Electrical and Electronic Components

Click to view similar products for [Terminal Block Interface Modules](#) category:

Click to view products by [Weidmuller](#) manufacturer:

Other Similar products are found below :

[73-551-6002I](#) [GCN1MX25B](#) [DIN-50P-01](#) [DIN-68H-01](#) [DIN-96DI-01](#) [2291901](#) [2295185](#) [2907794](#) [2M10FCL](#) [FLKM-2I/O](#) [FLKM-4I/O](#)
[2281759](#) [2906251](#) [2907808](#) [5601749](#) [5541962](#) [1776613-1](#) [GCN1-004A](#) [ADAM-3920R-AE](#) [060-6827-06](#) [2311030](#) [2287708](#) [XW2C-20G6-](#)
[IO16](#) [GCN1-T](#) [MACX](#) [MCR-VAC](#) [5775235](#) [ADAM-3956-BE](#) [XW6T-COM2.5X20YL](#) [XW6T-COM1.5X8BL](#) [XW6T-COM1.5X16BL](#)
[XW6T-COM1.5X20YL](#) [XW6T-COM1.5X16YL](#) [XW6T-COM1.5X20RD](#) [XW6T-COM1.5X20BL](#) [XW6T-COM2.5X8BL](#) [1976610000](#) [UM](#)
[45-D50SUB/B/ZFKDS](#) [5541234](#) [410-261](#) [2906243](#) [2906915](#) [2907706](#) [ADAM-3909-AE](#) [ADAM-3920-AE](#) [ADAM-3925-AE](#) [ADAM-3937-](#)
[BE](#) [ADAM-3950-AE](#) [ADAM-3951-BE](#) [ADAM-3968-AE](#) [ADAM-3968/50-AE](#)