

ACT20X-2SAI-2HAO-S

Weidmüller Interface GmbH & Co. KG
 Klingenbergstraße 26
 D-32758 Detmold
 Germany

www.weidmueller.com

Product image, Similar to illustration



The ACT20X-SAI-HAO/2SAI-2HAO current output isolators are suitable for controlling field devices in Ex areas, up to Zone 0.

The input/output-side HART protocol transparent signal connection is implemented using 4 to 20 mA current loops.

Integrated alarm contacts issue an alert in the event of a malfunction; this makes troubleshooting easier and increases system availability.

The rail-mounted current output isolators are optionally available in one- or two-channel versions.

With 11 mm width per channel, the devices need little space in the electrical cabinet.

General ordering data

Version	EX signal isolating converter, Safe-input: 4-20mA, Ex output: 4 - 20 mA, 2-channel
Order No.	8965460000
Type	ACT20X-2SAI-2HAO-S
GTIN (EAN)	4032248785070
Qty.	1 pc(s).

Creation date January 30, 2022 11:06:29 AM CET

Catalogue status 14.01.2022 / We reserve the right to make technical changes.

ACT20X-2SAI-2HAO-S

Weidmüller Interface GmbH & Co. KG

Klingenbergstraße 26

D-32758 Detmold

Germany

www.weidmueller.com

Technical data

Dimensions and weights

Depth	113.6 mm	Depth (inches)	4.472 inch
Height	119.2 mm	Height (inches)	4.693 inch
Width	22.5 mm	Width (inches)	0.886 inch
Net weight	212 g		

Temperatures

Storage temperature	-20 °C...85 °C	Operating temperature	-20 °C...60 °C
Humidity	0...95 % (no condensation)		

Probability of failure

SIL PAPER	SIL certificate	MTBF	135 Years
-----------	-----------------	------	-----------

Environmental Product Compliance

REACH SVHC	Lead 7439-92-1
------------	----------------

Input

Input current	4...20mA	Input frequency	0.5...2.5 kHz @ 3.5...23 mA bi-directional HART [®] signal
Number of inputs	2	Voltage drop	< 2 V

Output

2-wire supply	> 14.5 V @ 20 mA	Cut-off frequency (-3 dB)	0.5...2.5 kHz @ 3.5...23 mA bi-directional HART [®] signal
Influence of load resistance	≤ 0.01% of span / 100 Ω	Load impedance current	≤ 725 Ω
Output current	4...20 mA (max. 23 mA)	Output signal limit	< 28 mA
Residual ripple (current loop)	< 7.5 mV _{eff}	Type	intrinsically safe circuit

Alarm output

Alarm function	Signal limit exceeded, Line interruption at the input, No supply voltage, Device error	Continuous current	≤ 0.5 A AC / 0.3 A DC (safe zone), ≤ 0.5 A AC / 1 A DC (zone 2)
Hysteresis	0.1 mA (switching threshold)	Nominal switching voltage	≤ 125 V AC / 110 V DC (safe area) ≤ 32 V AC / 32 V DC (zone 2)
Power rating	≤ 62.5 VA / 32 W (safe area) ≤ 16 VA / 32 W (Zone 2)	Switching thresholds	0...29.9 mA (programmable)
Type	Status relay, 1 NC (voltage-free)		

General specifications

Accuracy	< 0.1% span	Configuration	With FDT/DTM software
Humidity	0...95 % (no condensation)	Power consumption	≤ 1.8 W
Protection degree	IP20	Step response time	≤ 5 ms
Type of connection	Screw connection	Voltage supply	19.2...31.2 V DC

Creation date January 30, 2022 11:06:29 AM CET

ACT20X-2SAI-2HAO-S

Weidmüller Interface GmbH & Co. KG

Klingenbergstraße 26

D-32758 Detmold

Germany

www.weidmueller.com

Technical data

Insulation coordination

EMC standards	DIN EN 61326, NE 21	Insulation voltage	2.6 kV (input / output)
Rated voltage	300 V		

Data for Ex applications (ATEX)

Current I_0	93 mA	Installation location	Device installed in safe area, zone 2
Marking	II (1) G [Ex ia Ga] IIC/IIB/IIA, II (1) D [Ex ia Da] IIIC, I (M1) [Ex ia Ma] I	Power P_0	< 650 mW
Voltage U_0	28 V DC		

Safety-related basic specifications

Description of the "safe state"	analogue Output ≤ 3.6 mA or output ≥ 21 mA	Device type	A
T_{proof}	5 Years	Total failure rate for safe detected failures (λ_{SD})	0 FIT
Hardware fault tolerance (HFT)	0	Safety category	SIL 2
Safe Failure Fraction (SFF)	85 %	Mean Time To Repair (MTTR)	24 h
Total failure rate for safe undetected failures (λ_{SU})	164 FIT	Total failure rate for dangerous detected failures (λ_{DD})	127 FIT
Total failure rate for dangerous undetected failures (λ_{DU})	48 FIT	Probability of outage PFH	$4.8 \times 10^{-8} \text{ h}^{-1}$
Demand mode	High		

Safety-related specifications Low demand mode

Average Probability of Failure on Demand (PFD_{avg})	2.29×10^{-4} ($T_{proof} = 1$ year), 4.37×10^{-4} ($T_{proof} = 2$ years), 1.06×10^{-4} ($T_{proof} = 5$ year)
--	--

Connection data

Type of connection	Screw connection	Tightening torque, min.	0.4 Nm
Tightening torque, max.	0.6 Nm	Clamping range, rated connection	2.5 mm ²
Clamping range, min.	0.25 mm ²	Clamping range, max.	2.5 mm ²
Wire connection cross section AWG, min.	AWG 26	Wire connection cross section AWG, max.	AWG 12

Classifications

ETIM 6.0	EC002653	ETIM 7.0	EC002653
ETIM 8.0	EC002653	ECLASS 9.0	27-21-01-20
ECLASS 9.1	27-21-01-20	ECLASS 10.0	27-21-01-20
ECLASS 11.0	27-21-01-20		

ACT20X-2SAI-2HAO-S

Weidmüller Interface GmbH & Co. KG

Klingenbergstraße 26

D-32758 Detmold

Germany

www.weidmueller.com

Technical data

Tender specification sheets

Long specification

Short specification

Ex output isolation amplifier for standard DC current signals, 2-channel, HART transparent 2-channel output isolation amplifier in 22.5 mm width with external power supply, for transmitting and isolating standard signals 4 to 20 mA from the safe zone to Ex zones 0,1,2.

Status-/ error messages are available via a relay contact (NO).

The component can be configured using standard FDT/DTM software.

Add-on housing for TS35 rail mounting

Dimensions: L/W/H

119.2/ 22.5/ 113.6

Screw connection/

Nominal cross-section

2.5 mm²

Protection degree: IP

20

Input 2 x

4...20 mA

Output

x 4...20 mA

Load <

600 Ohm Kanal

Accuracy < 0,1

% v.E

Temperature

coefficient < 0,01%

v.E./°C (Tu)

Alarm output relay 1

NO contact

250

V AC / 30 V DC @ 2A

safe zone

32 V

AC @ 0.5 A/ 32 VDC @ 1

A Zone 2

Auxiliary

power

19...31.2 V DC

Power loss approx. 3 W

Ambient

temperature range -20

°C...+60 °C

Secure

isolation EN

61010, 3-way isolation

up to 2.6 kV AC/DC of

all circuits against each

other

Working

voltage

300 V AC/DC at

100% relative humidity Category II

and pollution degree 2

Approvals cULus, ATEX

CE, Ex, FM

ATEX marking II 3 G

Ex A, Ex C, Ex E

Ex output isolation amplifier for standard DC current signals, 2-channel, HART transparent 2-channel output isolation amplifier in 22.5 mm width with external power supply,

Creation date January 30, 2022 10:00 AM CEST

Catalogue status 14.01.2022 / Weidmüller reserves the right to make technical changes.

ACT20X-2SAI-2HAO-S

Weidmüller Interface GmbH & Co. KG
 Klingenbergstraße 26
 D-32758 Detmold
 Germany

www.weidmueller.com

Technical data

Approvals

Approvals



Approvals	DNVGL;
ROHS	Conform
UL File Number Search	E337701

Downloads

Approval/Certificate/Document of Conformity	Certification SIL Certification DNV GL Certification ATEX Certification IECEX Certification UL Declaration of Conformity
Engineering Data	CAD data – STEP
Engineering Data	EPLAN, WSCAD
Software	Software unit – WI-Manager, DTM-Library for online installation V.1.2.3 Release notes for Weidmueller FDT-DTM Software version 1.2.3.
User Documentation	Instruction sheet Safety Manual for SIL application Handbuch ACT20X- Serie, deutsch Manual ACT20X- series, english 20210120 Security Advisory WI-Manager affected by MM Software fdtCONTAINER vulnerability
Catalogues	Catalogues in PDF-format
Brochures	

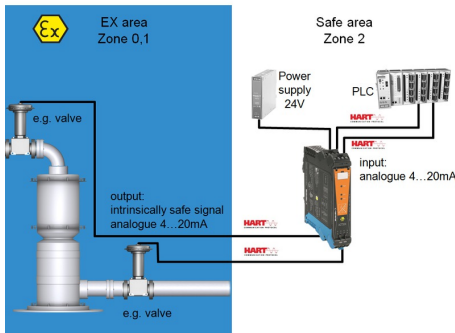
ACT20X-2SAI-2HAO-S

Weidmüller Interface GmbH & Co. KG
 Klingenbergstraße 26
 D-32758 Detmold
 Germany

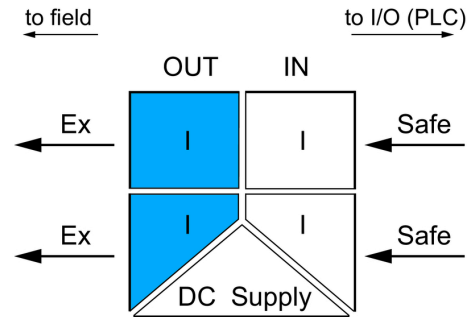
www.weidmueller.com

Drawings

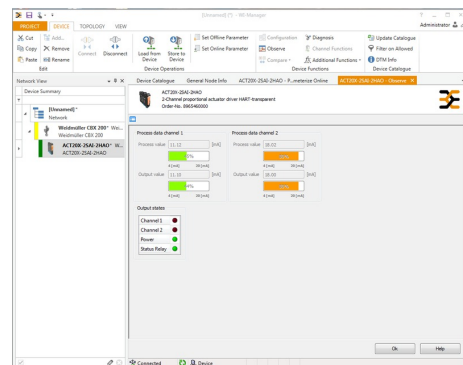
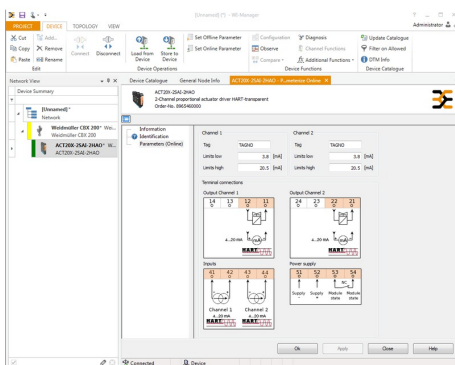
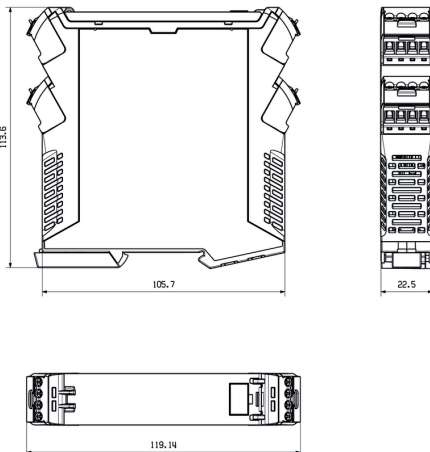
Application



Block diagram



Dimensioned drawing



screenshot of configuration with FDT2 / DTM software

screenshot of "observe" with FDT2 / DTM software

ACT20X-2SAI-2HAO-S

Weidmüller Interface GmbH & Co. KG
 Klingenbergstraße 26
 D-32758 Detmold
 Germany

www.weidmueller.com

Accessories**Configuration interfaces****General ordering data**

Type	CBX200 USB
Order No.	8978580000
GTIN (EAN)	4032248813759
Qty.	1 pc(s).

Blank

ESG is the tried-and-tested marker in MultiCard format for use on many well-known electrical devices. The result is high-quality device marking with a high-contrast appearance.

Various types are available for devices from manufacturers like Siemens, ABB, Beckhoff etc. Advantages at a glance:

- Tags for universal usage, self-adhesive or clip-on tags, depending on type
- For aligned equipment, e.g. circuit breakers, we supply ESG markers for clipping onto tag rails
- Individual laser-quality printing according to specifications

For custom printing: Please send us a file of our labeling software M-Print PRO or M-Print PRO Online (without installation) for your labeling specifications.

General ordering data

Type	ESG 6.6/20 BHZ 5.00/04	Version	
Order No.	1082540000	ESG, Device markers x 20 mm, PA 66, Colour: white	
GTIN (EAN)	4032248845439		
Qty.	200 pc(s).		

ACT20X-2SAI-2HAO-S

Weidmüller Interface GmbH & Co. KG
 Klingenbergstraße 26
 D-32758 Detmold
 Germany

www.weidmueller.com

Accessories

Blank



ESG is the tried-and-tested marker in MultiCard format for use on many well-known electrical devices. The result is high-quality device marking with a high-contrast appearance.

Various types are available for devices from manufacturers like Siemens, ABB, Beckhoff etc. Advantages at a glance:

- Tags for universal usage, self-adhesive or clip-on tags, depending on type
- For aligned equipment, e.g. circuit breakers, we supply ESG markers for clipping onto tag rails
- Individual laser-quality printing according to specifications

For custom printing: Please send us a file of our labeling software M-Print PRO or M-Print PRO Online (without installation) for your labeling specifications.

General ordering data

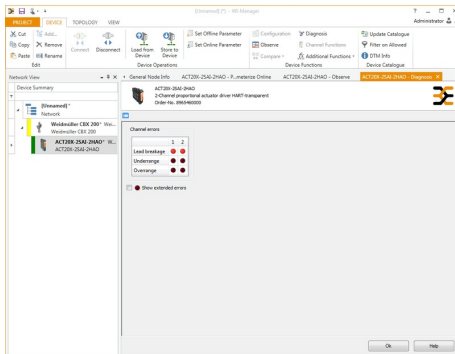
Type	ESG 8/13.5/43.3 SAI AU	Version
Order No.	1912130000	ESG, Device markers x 13.5 mm, PA 66, Colour: Transparent
GTIN (EAN)	4032248541164	
Qty.	5 pc(s).	

ACT20X-2SAI-2HAO-S

Weidmüller Interface GmbH & Co. KG
 Klingenbergstraße 26
 D-32758 Detmold
 Germany

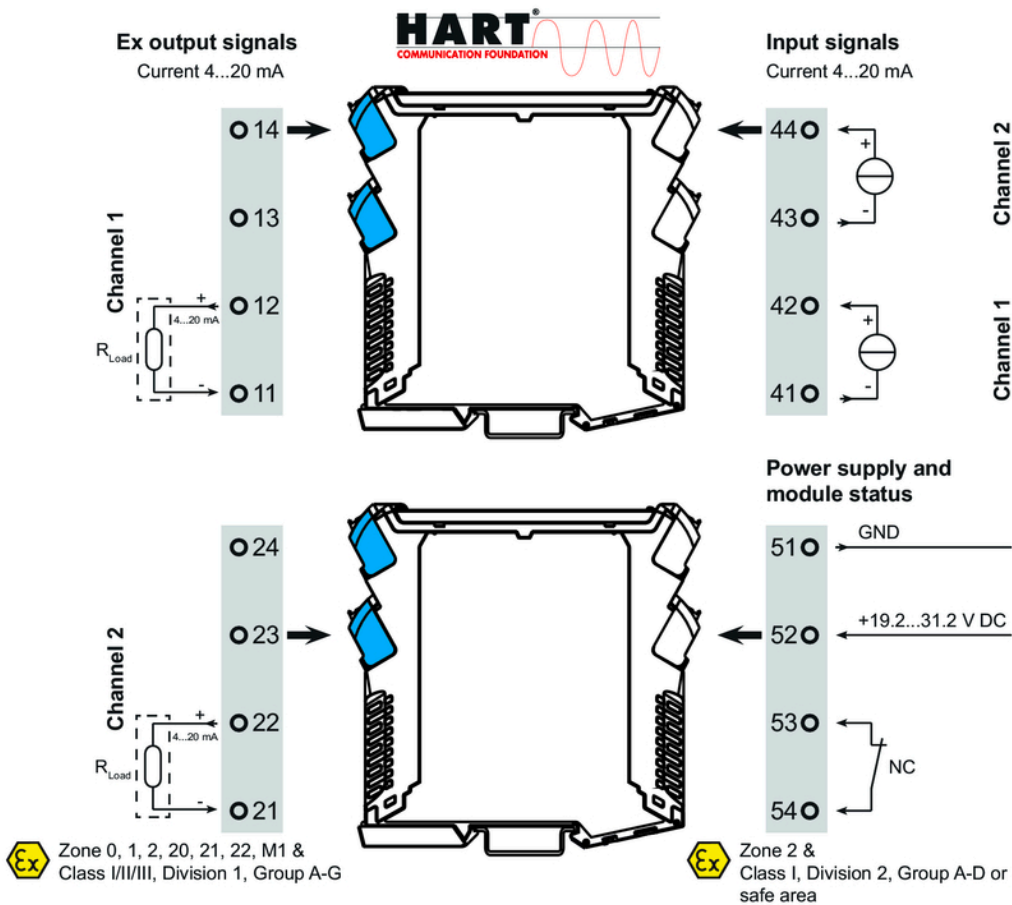
www.weidmueller.com

Drawings



screenshot of "diagnosis" with FDT2 / DTM software

Connection diagram



X-ON Electronics

Largest Supplier of Electrical and Electronic Components

Click to view similar products for [Terminal Block Interface Modules](#) category:

Click to view products by [Weidmuller](#) manufacturer:

Other Similar products are found below :

[73-551-6002I](#) [GCN1MX25B](#) [DIN-50P-01](#) [DIN-68H-01](#) [DIN-96DI-01](#) [2291901](#) [2295185](#) [2907794](#) [2M10FCL](#) [FLKM-2I/O](#) [FLKM-4I/O](#)
[2281759](#) [2906251](#) [2907808](#) [5601749](#) [5541962](#) [1776613-1](#) [GCN1-004A](#) [ADAM-3920R-AE](#) [060-6827-06](#) [2311030](#) [2287708](#) [XW2C-20G6-](#)
[IO16](#) [GCN1-T](#) [MACX](#) [MCR-VAC](#) [5775235](#) [ADAM-3956-BE](#) [XW6T-COM2.5X20YL](#) [XW6T-COM1.5X8BL](#) [XW6T-COM1.5X16BL](#)
[XW6T-COM1.5X20YL](#) [XW6T-COM1.5X16YL](#) [XW6T-COM1.5X20RD](#) [XW6T-COM1.5X20BL](#) [XW6T-COM2.5X8BL](#) [1976610000](#) [UM](#)
[45-D50SUB/B/ZFKDS](#) [5541234](#) [410-261](#) [2906243](#) [2906915](#) [2907706](#) [ADAM-3909-AE](#) [ADAM-3920-AE](#) [ADAM-3925-AE](#) [ADAM-3937-](#)
[BE](#) [ADAM-3950-AE](#) [ADAM-3951-BE](#) [ADAM-3968-AE](#) [ADAM-3968/50-AE](#)