

ACT20P ACT20P-VMR-3PH-ILP-H

Weidmüller Interface GmbH & Co. KG
 Klingenbergstraße 16
 D-32758 Detmold
 Germany
 Fon: +49 5231 14-0
 Fax: +49 5231 14-292083
 www.weidmueller.com

Product image



ACT20P: The flexible solution

- Precise and highly functional signal converters
- Simple configuration via display (Pro DCDC II), FDT/DTM software or DIP switch
- Release levers simplify handling
- More space in the control cabinet, from 12.5 mm wide for two channels

General ordering data

Type	ACT20P-VMR-3PH-ILP-H
Order No.	7760054165
Version	Limit value monitoring, Input: 3-phase voltage, Relay output
GTIN (EAN)	6944 169689086
Qty.	1 pc(s).

ACT20P
ACT20P-VMR-3PH-ILP-H

Weidmüller Interface GmbH & Co. KG
 Klingenbergstraße 16
 D-32758 Detmold
 Germany
 Fon: +49 5231 14-0
 Fax: +49 5231 14-292083
 www.weidmueller.com

Technical data**Dimensions and weights**

Width	22.5 mm	Width (inches)	0.886 inch
Height	117 mm	Height (inches)	4.606 inch
Depth	114.3 mm	Depth (inches)	4.5 inch
Net weight	233 g		

Temperatures

Humidity	5...85 % rel. humidity, no condensation	Operating temperature, max.	60 °C
Operating temperature, min.	-25 °C	Storage temperature, max.	85 °C
Storage temperature, min.	-40 °C	Operating temperature	-25 °C...60 °C
Storage temperature	-40 °C...85 °C		

Environmental Product Compliance

REACH SVHC Lead 7439-92-1

Input

Number of inputs	1	Type	Voltage input, 1-channel
Input voltage	180...500 VAC	Input resistance, voltage	≥1,8MΩ
Input measurement range	200...480 VAC	Input frequency	40...60 Hz

General data

Accuracy	3% *U _{rated} voltage	Configuration	DIP switch and potentiometer
Galvanic isolation	2-way isolator, between input/output	Measurement calibration	max: 70...120% *U _{rated} voltage, min: 50...100% *U _{rated} voltage
Power consumption	≤ 3VA	Rail	TS 35
Repeat accuracy	2% *U _{rated} voltage	Step response time	≤ 100 ms
Temperature coefficient	350 ppm/K	Unbalanced	Hysteresis: 5%, Phase imbalance in range of adjustment: 5...25%, OFF
Voltage supply	supplied from voltage measurement inputs		

Insulation coordination

EMC standards	EN 61326-1	Galvanic isolation	2-way isolator, between input/output
Impulse withstand voltage	6 kV (input - output), 4 kV (output 1 - output 2), 1.2/50 μs	Insulation voltage	2.5 kV (input / output)
Pollution severity	2	Rated voltage	600 VAC (input - output), 300 VAC (output 1 - output 2)
Surge voltage category	III	Test voltage	0.5 kV

ACT20P
ACT20P-VMR-3PH-ILP-H

Weidmüller Interface GmbH & Co. KG
 Klingenbergstraße 16
 D-32758 Detmold
 Germany
 Fon: +49 5231 14-0
 Fax: +49 5231 14-292083
 www.weidmueller.com

Technical data**Output (digital)**

Alarm function	Top and bottom limit values, window range, Holding function can be activated, Phase error, Phase sequence, Asymmetry, Alarm delay: 0...10 s	Number of digital outputs	2
Type	2 x 1 - or 1 x 2 changeover contact relay	Max. switching voltage, DC	30 V
Max. switching voltage, AC	250 V	Rated switching current	5 A

Connection data

Type of connection	Screw connection	Tightening torque, min.	0.4 Nm
Tightening torque, max.	0.6 Nm	Clamping range, rated connection	1.5 mm ²
Clamping range, min.	0.5 mm ²	Clamping range, max.	2.5 mm ²
Wire connection cross section AWG, min.	AWG 30	Wire connection cross section AWG, max.	AWG 14

Classifications

ETIM 6.0	EC002654	eClass 6.2	27-37-18-01
eClass 9.0	27-21-01-22	eClass 9.1	27-21-01-22

Product information

Product information	<p>ACT20P-VMR-3PH-ILP-H is a three-phase voltage setpoint limit monitor relay (3-phase or 3-phase plus zero conductor). The device is powered by the input measuring circuit. The device incorporates two separate relay outputs which trigger an alarm upon phase asymmetry, phase loss, phase sequence errors and phase angle errors and when exceeding or falling below preset voltage limit values. The alarm can also be set to trigger after an adjustable time delay.</p> <p>Features</p> <ul style="list-style-type: none"> • Supply from the input measuring circuit • Manual front-sided configuration via DIP switch, potentiometer and rotary switch • Various alarm functions: phase asymmetry, phase loss, phase sequence errors, phase angle errors, alarm delay, upper/lower limit value alarm, window alarm • Front LEDs indicates operation status and malfunction. • 3-way galvanic isolation between input, output 1 and output 2.
---------------------	---

Approvals

Approvals



ROHS

Conform

Downloads

Approval/Certificate/Document of Conformity	Declaration of Conformity
Engineering Data	STEP
Software	DIP switch configuration tool
User Documentation	IS ACT20P-VMR-3PH-ILP-H

Creation date February 28, 2019 3:40:57 PM CET

Catalogue status 15.02.2019 / We reserve the right to make technical changes.

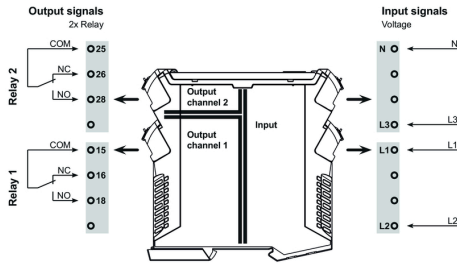
3

**ACT20P
ACT20P-VMR-3PH-ILP-H**

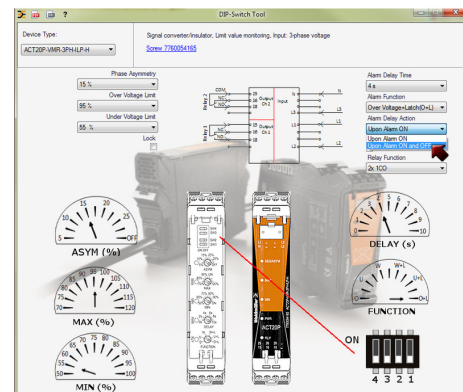
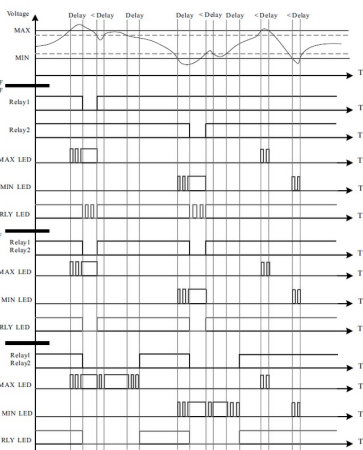
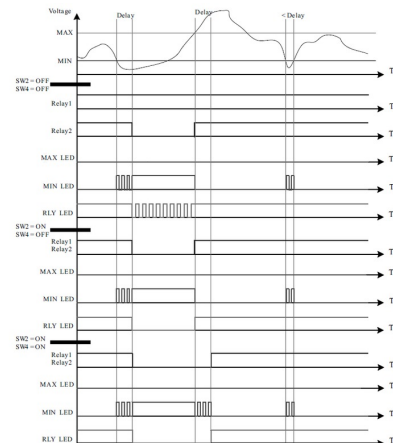
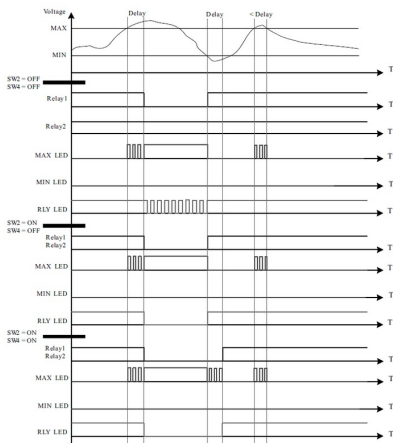
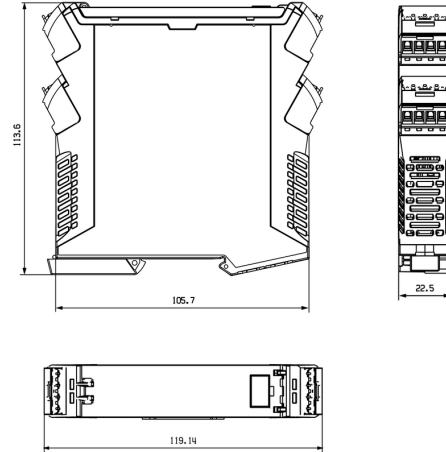
Weidmüller Interface GmbH & Co. KG
Klingenbergstraße 16
D-32758 Detmold
Germany
Fon: +49 5231 14-0
Fax: +49 5231 14-292083
www.weidmueller.com

Drawings

Connection diagram



Dimensioned drawing



example for DIP switch setting (with ACT20 tool)

X-ON Electronics

Largest Supplier of Electrical and Electronic Components

Click to view similar products for [General Purpose Relays category](#):

Click to view products by [Weidmuller manufacturer](#):

Other Similar products are found below :

[APF30318](#) [JVN1AF-4.5V-F](#) [PCN-105D3MHZ](#) [5JO-10000S-SIL](#) [5JO-1000CD-SIL](#) [5JO-400CD-SIL](#) [LY2S-AC220/240](#) [LYQ20DC12](#)
[6031007G](#) [6131406HQ](#) [6-1393099-3](#) [6-1393099-8](#) [6-1393122-4](#) [6-1393123-2](#) [6-1393767-1](#) [6-1393843-7](#) [6-1415012-1](#) [6-1419102-2](#) [6-](#)
[1423698-4](#) [6-1608051-6](#) [6-1608067-0](#) [6-1616170-6](#) [6-1616248-2](#) [6-1616282-3](#) [6-1616348-2](#) [6-1616350-1](#) [6-1616350-8](#) [6-1616358-7](#) [6-](#)
[1616359-9](#) [6-1616360-9](#) [6-1616931-6](#) [6-1617039-1](#) [6-1617052-1](#) [6-1617090-2](#) [6-1617090-5](#) [6-1617347-5](#) [6-1617353-3](#) [6-1617801-8](#) [6-](#)
[1617802-2](#) [6-1618107-9](#) [6-1618248-4](#) [M83536/1-027M](#) [CX-4014](#) [MAHC-5494](#) [MAVCD-5419-6](#) [703XCX-120A](#) [7-1393100-5](#) [7-1393111-7](#)
[7-1393144-5](#) [7-1393767-8](#)