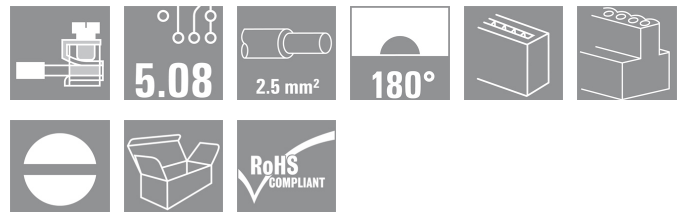
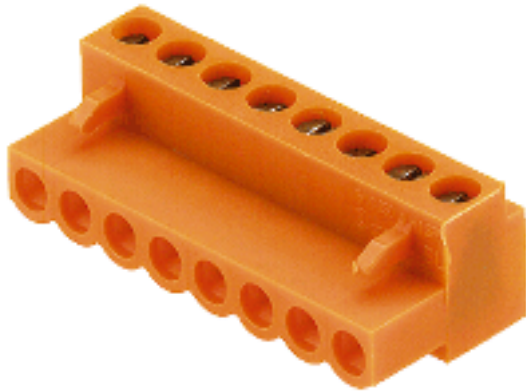


**BL/SL 5.08 series**  
**BL 5.08/12/180 SN OR BX**

**Weidmüller Interface GmbH & Co. KG**  
 Klingenbergstraße 16  
 D-32758 Detmold  
 Germany  
 Fon: +49 5231 14-0  
 Fax: +49 5231 14-292083  
 www.weidmueller.com



Female plugs with leaf-spring wire connection system.

The female plugs provide space for labelling.

- 0.2 - 1.5 mm<sup>2</sup> (IEC) / 26 - 14 AWG (UL)
- 400 V (IEC) / 300 V (UL)
- 11 A (IEC) / 10 A (UL)

**General ordering data**

|              |  |
|--------------|--|
| Order No.    | <a href="#">1716420000</a>   |
| Type         | BL 5.08/12/180 SN OR BX  |
| Version      | PCB plug-in connector, female plug, 5.08 mm, No. of poles: 12, 180°, Pressure clamp connection, Clamping range, rated connection, max.: 2.08 mm <sup>2</sup> , Box |
| GTIN (EAN)   | 4008190376468  |
| Qty.         | 50 pc(s).  |
| Product data | IEC: 400 V / 14 A / 0.2 - 1.5 mm <sup>2</sup><br>UL: 300 V / 10 A / AWG 26 - AWG 14  |
| Packaging    | Box  |

Creation date December 17, 2012 9:23:27 AM CET

**BL/SL 5.08 series**  
**BL 5.08/12/180 SN OR BX**

**Weidmüller Interface GmbH & Co. KG**  
 Klingenbergstraße 16  
 D-32758 Detmold  
 Germany  
 Fon: +49 5231 14-0  
 Fax: +49 5231 14-292083  
 www.weidmueller.com

**Technical data****Dimensions and weights**

|            |         |
|------------|---------|
| Net weight | 16.23 g |
|------------|---------|

**System parameters**

|                                 |                   |  |                           |
|---------------------------------|-------------------|--|---------------------------|
| Product family                  | BL/SL 5.08 series | Conductor connection system                | Pressure clamp connection |
| Outgoing direction of conductor | 180°              | Pitch in mm (P)                            | 5.08 mm                   |
| Pitch in inches (P)             | 0.2 inch          | No. of poles                               | 12                        |
| Number of rows                  | 1                 | Screwdriver blade                          | 0.6 x 3.5                 |
| Screwdriver blade standard      | DIN 5264          | Tightening torque, min.                    | 0.4 Nm                    |
| Tightening torque, max.         | 0.5 Nm            | Clamping screw                             | M 2.5                     |
| Stripping length                | 6 mm              | L1 in mm                                   | 55.88 mm                  |
| L1 in inches                    | 2.2 inch          | Touch-safe protection acc. to DIN VDE 0470 | IP 00                     |

**Material data**

|                                  |          |                                  |        |
|----------------------------------|----------|----------------------------------|--------|
| Insulating material              | PA       | Colour                           | Orange |
| Colour chart (similar)           | RAL 2000 | UL 94 flammability rating        | V-2    |
| CTI                              | ≥ 600    | Contact material                 | CuSn   |
| Contact surface                  | tinned   | Continuous operating temp., min. | -25 °C |
| Continuous operating temp., max. | 100 °C   |                                  |        |

**Connectable conductors**

|   |                      |   |                      |
|---|----------------------|---|----------------------|
| Clamping range, rated connection, min.          | 0.13 mm <sup>2</sup> | Clamping range, rated connection, max.          | 2.08 mm <sup>2</sup> |
| Wire connection cross section AWG, min.         | AWG 26               | Wire connection cross section AWG, max.         | AWG 14               |
| Solid, min. H05(07) V-U                         | 0.2 mm <sup>2</sup>  | Solid, max. H05(07) V-U                         | 1.5 mm <sup>2</sup>  |
| Flexible, min. H05(07) V-K                      | 0.2 mm <sup>2</sup>  | Flexible, max. H05(07) V-K                      | 1.5 mm <sup>2</sup>  |
| w. wire end ferrule, DIN 46228 pt 1, min.       | 0.2 mm <sup>2</sup>  | w. wire end ferrule, DIN 46228 pt 1, max.       | 1.5 mm <sup>2</sup>  |
| w. plastic collar ferrule, DIN 46228 pt 4, min. | 0.2 mm <sup>2</sup>  | w. plastic collar ferrule, DIN 46228 pt 4, max. | 1 mm <sup>2</sup>    |
| Plug gauge acc. to EN 60999 a x b; Ø            | 2.4 mm x 1.5 mm      |   |                      |

**DIN IEC rating data**

|   |       |   |       |
|---|-------|---|-------|
| Rated current, min. no. of poles (Tu=20°C)                            | 14 A  | Rated current, max. no. of poles (Tu=20°C)                                | 12 A  |
| Rated current, number of poles (Tu=40°C), min                         | 12 A  | Rated current, number of poles (Tu=40°C), max.                            | 10 A  |
| Rated voltage for surge voltage class / pollution degree II/2         | 400 V | Rated voltage for surge voltage class / pollution degree III/2            | 320 V |
| Rated voltage for surge voltage class / pollution degree III/3        | 250 V | Rated impulse voltage for surge voltage class/ pollution degree II/2      | 4 kV  |
| Rated impulse voltage for surge voltage class/ pollution degree III/2 | 4 kV  | Rated impulse voltage for surge voltage class/ contamination degree III/3 | 4 kV  |

**Data sheet...**

**BL/SL 5.08 series  
BL 5.08/12/180 SN OR BX**

**Weidmüller Interface GmbH & Co. KG**  
Klingenbergstraße 16  
D-32758 Detmold  
Germany  
Fon: +49 5231 14-0  
Fax: +49 5231 14-292083  
www.weidmueller.com

**Technical data**

**CSA rating data**

Institute (CSA)



Rated voltage (Use group B)

300 V

|                               |        |
|-------------------------------|--------|
| Rated current (use group B)   | 10 A   |
| Rated current (use group D)   | 10 A   |
| Wire cross-section, AWG, max. | AWG 14 |

|                               |        |
|-------------------------------|--------|
| Rated voltage (use group D)   | 300 V  |
| Wire cross-section, AWG, min. | AWG 26 |

**UL 1059 rating data**

Institute (UR)



Rated voltage (use group B)

300 V

|                               |        |
|-------------------------------|--------|
| Rated current (use group B)   | 10 A   |
| Rated current (use group D)   | 10 A   |
| Wire cross-section, AWG, max. | AWG 14 |

|                               |        |
|-------------------------------|--------|
| Rated voltage (use group D)   | 300 V  |
| Wire cross-section, AWG, min. | AWG 26 |

**Classifications**

|            |             |            |             |
|------------|-------------|------------|-------------|
| ETIM 3.0   | EC001284    | UNSPSC     | 30-21-18-10 |
| eClass 4.1 | 27-26-07-01 | eClass 5.1 | 27-26-07-04 |
| eClass 6.0 | 27-26-07-04 | eClass 7.0 | 27-44-04-02 |

**Notes**

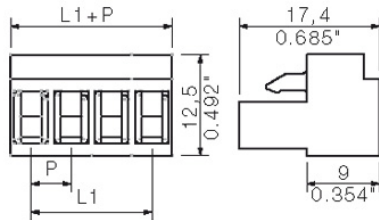
Notes

- Additional colours on request
- Gold-plated contact surfaces on request
- Rated current related to rated cross-section and min. No. of poles.
- Wire end ferrule without plastic collar to DIN 46228/1
- Wire end ferrule with plastic collar to DIN 46228/4
- Specifications of diagram P = pitch
- Do not tighten screws in inserted condition
- Rated data refer only to the component itself. Clearance and creepage distances to other components are to be designed in accordance with the relevant application standards.

**Approvals**

Approvals



**Data sheet...****BL/SL 5.08 series**  
**BL 5.08/12/180 SN OR BX****Weidmüller Interface GmbH & Co. KG**  
Klingenbergstraße 16  
D-32758 Detmold  
Germany  
Fon: +49 5231 14-0  
Fax: +49 5231 14-292083  
[www.weidmueller.com](http://www.weidmueller.com)**Drawings**



## X-ON Electronics

Largest Supplier of Electrical and Electronic Components

*Click to view similar products for [weidmuller](#) manufacturer:*

Other Similar products are found below :

[8924550000](#) [56956](#) [0133660000](#) [6720000227](#) [6720005111](#) [68676](#) [69718](#) [EXO24CH](#) [7760056106](#) [7940000218](#) [8005181001](#) [8008180000](#)  
[8432240000](#) [8463580000](#) [8545830000](#) [8689870000](#) [8705640000](#) [9001080000](#) [9003720000](#) [9004250000](#) [9004780000](#) [9013260000](#)  
[9014100000](#) [9019040000](#) [9026010000](#) [9028630000](#) [903708](#) [9037350000](#) [9046290000](#) [9129643500](#) [913155](#) [9159530000](#) [919656](#) [919764](#)  
[9202230000](#) [9202850000](#) [9456750000](#) [9457913000](#) [980811](#) [980826](#) [9912800003](#) [9916080000](#) [9916280012](#) [9918380000](#) [9919371205](#)  
[9919371224](#) [9925710000](#) [9926252005](#) [9927480024](#) [1166660000](#)