

Klippon STB (Small Terminal Box) KLIPPON STB 1.1 SS

Weidmüller Interface GmbH & Co. KG
Klingenbergstraße 16
D-32758 Detmold
Germany
Fon: +49 5231 14-0
Fax: +49 5231 14-292083
www.weidmueller.com

Product image



Ideally suited for the energy, process and transportation industries, the Klippon® STB enclosure series is the perfect complement to our existing Klippon enclosure portfolio. Enclosures in this series are approved according to international standards such as e.g. EN62208 and EN60079-0/7 (ATEX).

- Mirror-polished or electropolished stainless steel 1.4404 (316L), 1.5 mm
- High-temperature-resistant seal as standard - extended temperature range of -60°C to +100°C (+120°C on request)
- Approved according to ATEX, IECEx, cULus, Lloyds Register, Germanischer Lloyd, GOST and INMETRO
- Flexible options for fastening the internal mounting rail
- IP66 protection
- Secure, permanent function of the seal is ensured by seal compression protection
- Earthing stud in the cover and base of the enclosure
- Laser cut weld seams for increased quality
- Already welded-on mounting feet guarantee optimum enclosure installation

Weidmüller can manufacture and supply this enclosure - according to customer specifications - fitted with all necessary terminals and cable glands.

General ordering data

| | |
|------------|---|
| Type | KLIPPON STB 1.1 SS |
| Order No. | 1002750000 |
| Version | Klippon STB (Small Terminal Box), Empty enclosure, stainless steel enclosure, Height: 150 mm, Width: 120 mm, Depth: 80 mm, Material: Stainless steel 1.4404 (316L), Mirror polished, silver |
| GTIN (EAN) | 4032248695683 |
| Qty. | 1 pc(s). |

Klippon STB (Small Terminal Box) KLIPPON STB 1.1 SS

Weidmüller Interface GmbH & Co. KG
Klingenbergstraße 16
D-32758 Detmold
Germany
Fon: +49 5231 14-0
Fax: +49 5231 14-292083
www.weidmueller.com

Technical data

Dimensions and weights

| | | | |
|----------------------------|---------|-----------------|------------|
| Width | 120 mm | Width (inches) | 4.724 inch |
| Height | 150 mm | Height (inches) | 5.905 inch |
| Depth | 80 mm | Depth (inches) | 3.15 inch |
| Mounting dimension - width | 145 mm | Weight | 1.38 kg |
| Net weight | 1,451 g | | |

Cable glands, left

| | | | |
|-----|----|-----|---|
| M12 | 10 | M16 | 6 |
| M20 | 6 | M25 | 2 |
| M32 | 2 | M40 | 1 |

Cable glands, right

| | | | |
|-----|----|-----|---|
| M12 | 10 | M16 | 6 |
| M20 | 6 | M25 | 2 |
| M32 | 2 | M40 | 1 |

Cable glands, top/bottom

| | | | |
|-----|----|-----|---|
| M12 | 10 | M16 | 6 |
| M20 | 6 | M25 | 3 |
| M32 | 2 | M40 | 2 |

Certificate numbers enclosure

| | | | |
|---|----------------------|--|----------------------|
| Certificate no. assembled enclosure (ATEX) | IBExU07ATEX1148 | Certificate no. empty enclosure (ATEX) | IBExU 07ATEX1147U |
| Certificate no. assembled enclosure (IECEX) | IECEX IBE 09.0019 | Certificate no. empty enclosure (IECEX) | IECEX IBE 09.0018U |
| Certificate no., assembled enclosure (EAC) | RU C-DE.ГБ08.B.01328 | Certificate no., empty enclosure (EAC) | RU C-DE.ГБ08.B.00472 |
| Certificate no. assembled enclosure (INMETRO) | IEx 13.0003 | Certificate no. empty enclosure (INMETRO) | IEx 13.0002U |
| Certificate no. assembled enclosure (AEx) | E223792 | Certificate no., assembled enclosure (KOSHA) | 16-AV4BO-0247X |
| Certificate No. (GERMILLOYD) | 59358-08 | Certificate No. (MARITREG) | 15.40041.250 |
| Certificate no. (cULus) | E197061 | | |

General information

| | | | |
|---------------------------------|---|-----------------------------|---|
| Areas of use | Explosive risk zone, Packaging industry, Transportation, Process industry, Marine engineering | Material thickness | 1.5 mm |
| Material thickness of enclosure | 1.5 mm | Material | Stainless steel 1.4404 (316L) |
| Seal material | Silicone | Surface finish | Mirror polished |
| Operating temperature, min. | -60 °C | Operating temperature, max. | 100 °C |
| Impact resistance | 10 J version standard, 7 J ATEX version | Protection degree | IP66 |
| Enclosure attachment | Welded-on mounting foot with 8-mm holes | Lid attachment | M5 hexagonal screw with slot and 10mm distance across flats |
| Integral fixing | TAS 20 rail welded to floor | | |

Creation date April 18, 2019 11:27:39 AM CEST

Klippon STB (Small Terminal Box)
KLIPPON STB 1.1 SS

Weidmüller Interface GmbH & Co. KG
 Klingenbergstraße 16
 D-32758 Detmold
 Germany
 Fon: +49 5231 14-0
 Fax: +49 5231 14-292083
 www.weidmueller.com

Technical data**vertical assembly**

| | | | |
|-----------------------------|------|-----------------|------|
| WDU 10 / ZDU 10 | 1x11 | WDU 16 / ZDU 16 | 1x9 |
| WDU 2,5 / ZDU 2,5 / IDU 2,5 | 1x23 | WDU 4 / ZDU 4 | 1x19 |
| WDU 6 / ZDU 6 | 1x14 | | |

Classifications

| | | | |
|------------|-------------|------------|-------------|
| ETIM 4.0 | EC002600 | ETIM 5.0 | EC002600 |
| ETIM 6.0 | EC002503 | eClass 6.2 | 27-14-91-07 |
| eClass 7.1 | 27-14-91-07 | eClass 8.1 | 27-14-91-07 |
| eClass 9.0 | 27-18-05-02 | eClass 9.1 | 27-18-05-02 |

Product information

Product information the ambient temperature for the assembly will be reduced to +60°C and the surface temperature to +100°C.

Approvals

Approvals



ROHS Conform

Downloads

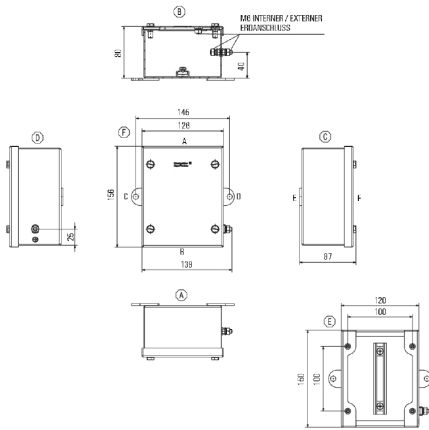
| | |
|---|--|
| Approval/Certificate/Document of Conformity | Attestation of Conformity - Klippon STB Empty Enclosures - AoC DE PS2620 160308 001ISS01 EU Declaration of Conformity - Klippon STB Empty Enclosures Ex - DoC DE PS2620 160412 001ISS01 |
| Brochure/Catalogue | MB OVERV. PROCESS WD DE MB KLIPPON ENCL.TECN EN MB PROCESS EN CAT 5 ENCL 17/18 EN FL KLIPPON STB EN FL SHIPBUILDING 2016 EN |
| Engineering Data | EPLAN.WSCAD |
| Engineering Data | STEP |
| Tender specification | Klippon STB 1.1 SS_1002750000_DE Klippon STB 1.1 SS_1002750000_EN |
| User Documentation | MB KLIPPON ENCL.TECN DE Assembly guidelines - empty enclosures |

**Klippon STB (Small Terminal Box)
KLIPPON STB 1.1 SS**

Weidmüller Interface GmbH & Co. KG
 Klingenbergstraße 16
 D-32758 Detmold
 Germany
 Fon: +49 5231 14-0
 Fax: +49 5231 14-292083
 www.weidmueller.com

Drawings

Dimensioned drawing



X-ON Electronics

Largest Supplier of Electrical and Electronic Components

Click to view similar products for [Enclosures, Boxes, & Cases](#) *category:*

Click to view products by [Weidmuller](#) *manufacturer:*

Other Similar products are found below :

[CR-425 PAINTED](#) [585-R-WH-PK](#) [M-10-PLATED](#) [60221-01](#) [60566-01-000](#) [HPL-9VB BATT DOOR](#) [M-16-LID-PLATED](#) [M18-PLTD](#) [M-21-LID-PLATED](#) [M-21-PLATED](#) [M-23-PLATED](#) [CU-281-MB](#) [6711GSKT](#) [71884-29-028](#) [LH45-100 Black](#) [7200B](#) [72868-510-000](#) [CNS-0000 Black](#) [72883-510-000](#) [CNS-0101 Black](#) [72906-510-000](#) [CNS-0407 Black](#) [73091-510-000](#) [CNM-0000-BLACK Kit](#) [73092-510-000](#) [CNM-0101 Black](#) [73108-510-000](#) [CNL-0303 Black](#) [73395-510-039](#) [CNS-0006 Bone](#) [74257-510-000](#) [CNL-0004](#) [MDC-1183-PLAIN-ALUM](#) [MDC-1183-PTD](#) [MDC-13104-PLAIN-ALUM](#) [MDC-211 - PAINTED IVORY/BEIGE](#) [MDC-321-PTD](#) [MDC-432-PLAIN-ALUM](#) [MDC-973-PTD](#) [76](#) [77153-01-028](#) [FLX6030](#) [83535-01-508](#) [PS-11296-G](#) [PS-11298-B](#) [116-508](#) [120-407](#) [120-412](#) [120-909](#) [120-455](#) [R272-100-000](#) [120-910](#) [R501-001-010](#) [R508-080-000](#) [R508-160-000](#) [R530-120-000](#) [R530-122-000](#) [R530-200-000](#) [R531-160-000](#) [R531-200-000](#) [R582-080-100](#)