

## TM-I 12/18 MC NE RT

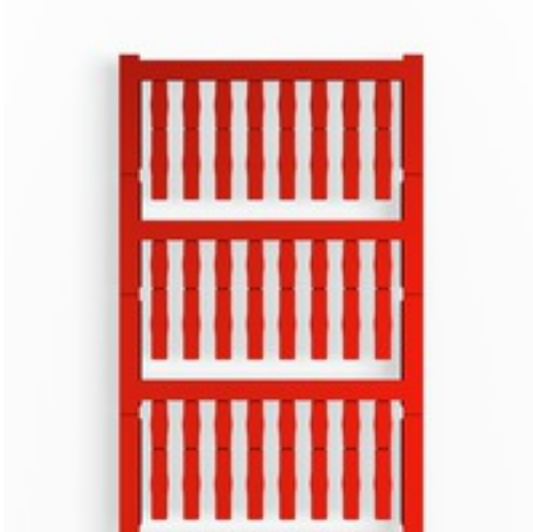
**Weidmüller Interface GmbH & Co. KG**

Klingenbergstraße 26

D-32758 Detmold

Germany

[www.weidmueller.com](http://www.weidmueller.com)



TM-I is an acknowledged and accredited marker type for traffic engineering applications. There are various different tag lengths available for individual labelling with long character strings. Easy handling of separation and installation thanks to the project marker field. Pre-attachment of sleeves and retrofitting of tags offer excellent versatility

The special contour of TM-I allows easy assembly and secures firm positioning. They are compatible with a number of commercially available sleeves. Thanks to the MultiCard format, the tags can be printed quickly and conveniently with the PrintJet CONNECT, plotter or the STI pen.

- Easy handling of separation and installation thanks to the project marker field.
- Acknowledged and accredited marker for traffic engineering applications
- Pre-attachment of sleeves and retrofitting of tags offer excellent versatility
- Not suited for labelling with P-Ink or STI pen in connection with CLI T sleeves

**For custom printing:** Please send us a file of our labeling software M-Print PRO or M-Print PRO Online (without installation) for your labeling specifications.

### General ordering data

Version	TM-I, Insert markers, 30 x 4 mm, red
Order No.	<a href="#">1421170000</a>
Type	TM-I 12/18 MC NE RT
GTIN (EAN)	4050118224931
Qty.	240 pc(s).
compatible printer	<a href="#">2438520000</a> <a href="#">2438510000</a>

## TM-I 12/18 MC NE RT

**Weidmüller Interface GmbH & Co. KG**

Klingenbergstraße 26

D-32758 Detmold

Germany

[www.weidmueller.com](http://www.weidmueller.com)

## Technical data

### Dimensions and weights

Height	30 mm	Height (inches)	1.181 inch
Net weight	0.31 g	Width	4 mm
Width (inches)	0.157 inch		

### Temperatures

Operating temperature range	-40...100 °C
-----------------------------	--------------

### General data

Colour	red	Halogen	No
Material	Polyamide 66	Number of markers per combination	1 MultiCard = Insert markers
Operating temperature range	-40...100 °C	Operating temperature range, max.	100 °C
Operating temperature range, min.	-40 °C	Recommended industries	Transportation, Machinery
UL 94 flammability rating	V-2	Width	4 mm

### Conductor and cable markers

Halogen	No
---------	----

### Classifications

ETIM 6.0	EC001530	ETIM 7.0	EC001530
ECLASS 9.0	27-40-04-01	ECLASS 9.1	27-40-04-01
ECLASS 10.0	27-40-04-01	ECLASS 11.0	27-28-11-02

### Approvals

ROHS	Conform
------	---------

### Downloads

Engineering Data	<a href="#">EPLAN, WSCAD</a>
Product Change Notification	<a href="#">Technical change - DE</a> <a href="#">Technical change - EN</a>

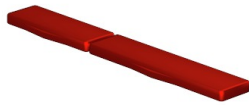
**Data sheet**

**TM-I 12/18 MC NE RT**

**Weidmüller Interface GmbH & Co. KG**  
Klingenbergstraße 26  
D-32758 Detmold  
Germany

[www.weidmueller.com](http://www.weidmueller.com)

**Drawings**



## X-ON Electronics

Largest Supplier of Electrical and Electronic Components

*Click to view similar products for [Wire Labels & Markers](#) category:*

*Click to view products by [Weidmuller](#) manufacturer:*

Other Similar products are found below :

[89078GBEST](#) [89082GBESR](#) [89082GBEST](#) [PCL025-4](#) [5761-2SF](#) [58400](#) [586R734H02](#) [M1.040.0000.6](#) [CRS-CM5M](#) [CRS-M18M](#) [CS1836-000](#) [CS8626-000](#) [CU6337-000](#) [CU6342-000](#) [CU6343-000](#) [CWD01-0](#) [CWD012-0](#) [CWD012-7](#) [CWD015-3](#) [CWD015-7](#) [CWD02-0](#) [CWD02-3](#) [CWD02-4](#) [CWD02-6](#) [CWD02-8](#) [CWD02-A](#) [CWD02-D](#) [CWD02-H](#) [CWD02-K](#) [CWD02-L](#) [CWD02-M](#) [CWD02-P](#) [CWD02-Q](#) [CWD02-R](#) [CWD02-U](#) [CWD02-W](#) [CWD02-Y](#) [CWD03-+](#) [CWD03-0](#) [CWD03-P](#) [CWD06-0](#) [CWD06-8](#) [CWD06-9](#) [CWD06-L](#) [CWD06-N](#) [CWD09-0](#) [CWD09-5](#) [CWD09-7](#) [6806810001](#) [CZ2857-000](#)