

VT SF 3/12 MC NE GE V0

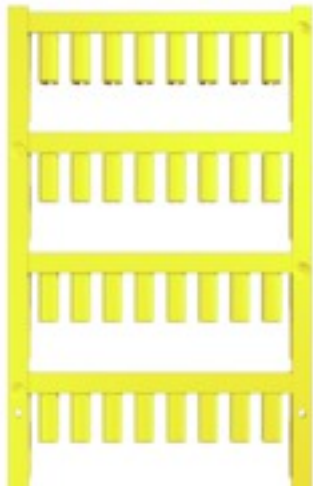
Weidmüller Interface GmbH & Co. KG

Klingenbergstraße 26

D-32758 Detmold

Germany

www.weidmueller.com



Similar to illustration



SlimFix are conductor and cable markers with a space-saving design. The markers can be fitted even after the conductor has been installed. They consist of halogen-free material and comply with flammability rating V0/V2. SlimFix is an acknowledged and accredited marker type for traffic engineering applications. The SF tool allows easy installation, even in case of small markers.

Advantages:

- Halogen-free material
- Flammability rating V0/V2
- Approved and accredited markers for traffic engineering applications, etc.
- Has to be fixed with cable ties if the conductor cross-section is larger than 16.0 mm²
- Markers in proven MultiCard format

General ordering data

Version	SlimFix, Conductor and cable markers, 3 - 3.7 mm, 12 x 4.6 mm, yellow
Order No.	1718490004
Type	VT SF 3/12 MC NE GE V0
GTIN (EAN)	4008190349639
Qty.	640 pc(s).
compatible printer	2438520000 2438510000

VT SF 3/12 MC NE GE V0
Weidmüller Interface GmbH & Co. KG

Klingenbergstraße 26

D-32758 Detmold

Germany

www.weidmueller.com

Technical data
Dimensions and weights

Depth	4.8 mm	Depth (inches)	0.189 inch
Height	12 mm	Height (inches)	0.472 inch
Net weight	0.213 g	Width	4.6 mm
Width (inches)	0.181 inch		

Temperatures

Operating temperature range	-50...120 °C
-----------------------------	--------------

General data

Colour	yellow	Halogen	No
Material	Polyamide 66	Material colour according to resistance code	4
Number of markers per combination	1 MultiCard = Conductor and cable markers	Operating temperature range	-50...120 °C
Operating temperature range, max.	120 °C	Operating temperature range, min.	-50 °C
Recommended industries	Transportation, Machinery	Size of labelling field	12 x 4.6 mm
Type of printing	neutral	UL 94 flammability rating	V-0
Width	4.6 mm		

Conductor and cable markers

Conductor O.D.	3 - 3.7 mm	Conductor O.D., max.	3.7 mm
Conductor O.D., min.	3 mm	Conductor cross-section, max.	2.5 mm ²
Conductor cross-section, min.	1.5 mm ²	Cross-section for connected wire	1.5 - 2.5 mm ²
Halogen	No		

Classifications

ETIM 6.0	EC001530	ETIM 7.0	EC001530
ECLASS 9.0	27-40-04-01	ECLASS 9.1	27-40-04-01
ECLASS 10.0	27-40-04-01	ECLASS 11.0	27-28-11-02

Approvals

ROHS	Conform
------	---------

Downloads

Engineering Data	STEP
Engineering Data	EPLAN, WSCAD, Zuken E3.S

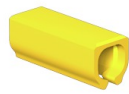
Data sheet

VT SF 3/12 MC NE GE V0

Weidmüller Interface GmbH & Co. KG
Klingenbergstraße 26
D-32758 Detmold
Germany

www.weidmueller.com

Drawings



X-ON Electronics

Largest Supplier of Electrical and Electronic Components

Click to view similar products for [Wire Labels & Markers](#) category:

Click to view products by [Weidmuller](#) manufacturer:

Other Similar products are found below :

[89078GBEST](#) [89082GBESR](#) [89082GBEST](#) [PCL025-4](#) [5761-2SF](#) [58400](#) [586R734H02](#) [M1.040.0000.6](#) [CRS-CM5M](#) [CRS-M18M](#) [CS1836-000](#) [CS8626-000](#) [CU6337-000](#) [CU6342-000](#) [CU6343-000](#) [CWD01-0](#) [CWD012-0](#) [CWD012-7](#) [CWD015-3](#) [CWD015-7](#) [CWD02-0](#) [CWD02-3](#) [CWD02-4](#) [CWD02-6](#) [CWD02-8](#) [CWD02-A](#) [CWD02-D](#) [CWD02-H](#) [CWD02-K](#) [CWD02-L](#) [CWD02-M](#) [CWD02-P](#) [CWD02-Q](#) [CWD02-R](#) [CWD02-U](#) [CWD02-W](#) [CWD02-Y](#) [CWD03-+](#) [CWD03-0](#) [CWD03-P](#) [CWD06-0](#) [CWD06-8](#) [CWD06-9](#) [CWD06-L](#) [CWD06-N](#) [CWD09-0](#) [CWD09-5](#) [CWD09-7](#) [6806810001](#) [CZ2857-000](#)