

VT SF 4.5/21 MC NE RT V0

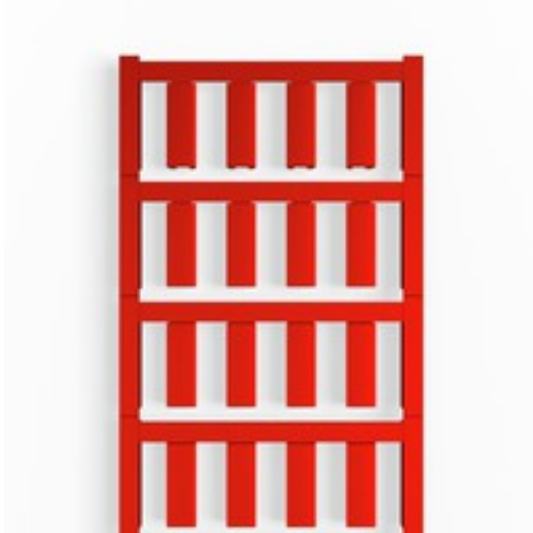
Weidmüller Interface GmbH & Co. KG

Klingenbergstraße 26

D-32758 Detmold

Germany

www.weidmueller.com



Similar to illustration

SlimFix are conductor and cable markers with a space-saving design. The markers can be fitted even after the conductor has been installed. They consist of halogen-free material and comply with flammability rating V0/V2. SlimFix is an acknowledged and accredited marker type for traffic engineering applications. The SF tool allows easy installation, even in case of small markers.

Advantages:

- Halogen-free material
- Flammability rating V0/V2
- Approved and accredited markers for traffic engineering applications, etc.
- Has to be fixed with cable ties if the conductor cross-section is larger than 16.0 mm²
- Markers in proven MultiCard format



General ordering data

Version	SlimFix, Conductor and cable markers, 4.1 - 4.9 mm, 21 x 7.4 mm, red
Order No.	1730570003
Type	VT SF 4.5/21 MC NE RT V0
GTIN (EAN)	400819095458 1
Qty.	192 pc(s).
compatible printer	2438520000 2438510000
Alternative product	1918990000

VT SF 4.5/21 MC NE RT V0
Weidmüller Interface GmbH & Co. KG

Klingenbergstraße 26

D-32758 Detmold

Germany

www.weidmueller.com

Technical data
Dimensions and weights

Depth	6.5 mm	Depth (inches)	0.256 inch
Height	21 mm	Height (inches)	0.827 inch
Net weight	0.818 g	Width	7.4 mm
Width (inches)	0.291 inch		

Temperatures

Operating temperature range	-50...120 °C
-----------------------------	--------------

General data

Colour	red	Halogen	No
Material	Polyamide 66	Number of markers per combination	1 MultiCard = Conductor and cable markers
Operating temperature range	-50...120 °C	Operating temperature range, max.	120 °C
Operating temperature range, min.	-50 °C	Recommended industries	Transportation, Machinery
Size of labelling field	21 x 7.4 mm	Type of printing	neutral
UL 94 flammability rating	V-0	Width	7.4 mm

Conductor and cable markers

Conductor O.D.	4.1 - 4.9 mm	Conductor O.D., max.	4.9 mm
Conductor O.D., min.	4.1 mm	Conductor cross-section, max.	6 mm ²
Conductor cross-section, min.	4 mm ²	Cross-section for connected wire	4 - 6 mm ²
Halogen	No		

Classifications

ETIM 6.0	EC001530	ETIM 7.0	EC001530
ECLASS 9.0	27-40-04-01	ECLASS 9.1	27-40-04-01
ECLASS 10.0	27-40-04-01	ECLASS 11.0	27-28-11-02

Approvals

ROHS	Conform
------	---------

Downloads

Engineering Data	STEP
Engineering Data	EPLAN, WSCAD, Zuken E3.S

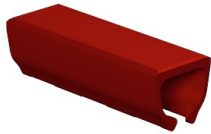
Data sheet

VT SF 4.5/21 MC NE RT V0

Weidmüller Interface GmbH & Co. KG
Klingenbergstraße 26
D-32758 Detmold
Germany

www.weidmueller.com

Drawings



X-ON Electronics

Largest Supplier of Electrical and Electronic Components

Click to view similar products for [Wire Labels & Markers](#) category:

Click to view products by [Weidmuller](#) manufacturer:

Other Similar products are found below :

[89078GBEST](#) [89082GBESR](#) [89082GBEST](#) [PCL025-4](#) [5761-2SF](#) [58400](#) [586R734H02](#) [M1.040.0000.6](#) [CRS-CM5M](#) [CRS-M18M](#) [CS1836-000](#) [CS8626-000](#) [CU6337-000](#) [CU6342-000](#) [CU6343-000](#) [CWD01-0](#) [CWD012-0](#) [CWD012-7](#) [CWD015-3](#) [CWD015-7](#) [CWD02-0](#) [CWD02-3](#) [CWD02-4](#) [CWD02-6](#) [CWD02-8](#) [CWD02-A](#) [CWD02-D](#) [CWD02-H](#) [CWD02-K](#) [CWD02-L](#) [CWD02-M](#) [CWD02-P](#) [CWD02-Q](#) [CWD02-R](#) [CWD02-U](#) [CWD02-W](#) [CWD02-Y](#) [CWD03-+](#) [CWD03-0](#) [CWD03-P](#) [CWD06-0](#) [CWD06-8](#) [CWD06-9](#) [CWD06-L](#) [CWD06-N](#) [CWD09-0](#) [CWD09-5](#) [CWD09-7](#) [6806810001](#) [CZ2857-000](#)