

VT SFX 9/24 MC NE BL V0

Weidmüller Interface GmbH & Co. KG

Klingenbergstraße 26

D-32758 Detmold

Germany

www.weidmueller.com



Similar to illustration

SlimFix X are halogen-free conductor and cable markers with a space-saving design. The markers can be fitted even after the conductor has been installed. SlimFix is an acknowledged and approved marker type in traffic engineering. The SF tool allows easy installation even in case of small markers.

- Halogen-free material
- Approved and accredited markers for traffic engineering applications, etc.
- Has to be fixed with cable ties if the conductor cross-section is larger than 16.0 mm²
- Markers in proven MultiCard format

For custom printing: Please send us a file of our labeling software M-Print PRO or M-Print PRO Online (without installation) for your labeling specifications.



General ordering data

Version	SlimFix X, Conductor and cable markers, 7 - 40 mm, 24 x 15 mm, blue
Order No.	1727740002
Type	VT SFX 9/24 MC NE BL V0
GTIN (EAN)	4008190382421
Qty.	320 pc(s).
compatible printer	2438520000 2438510000

VT SFX 9/24 MC NE BL V0
Weidmüller Interface GmbH & Co. KG

Klingenbergstraße 26

D-32758 Detmold

Germany

www.weidmueller.com

Technical data
Dimensions and weights

Depth	0.5 mm	Depth (inches)	0.02 inch
Height	24 mm	Height (inches)	0.945 inch
Net weight	0.473 g	Width	15 mm
Width (inches)	0.591 inch		

Temperatures

Operating temperature range	-50...120 °C
-----------------------------	--------------

General data

Colour	blue	Halogen	No
Material	Polyamide 66	Material colour according to resistance code	6
Number of markers per combination	1 MultiCard = Conductor and cable markers	Operating temperature range	-50...120 °C
Operating temperature range, max.	120 °C	Operating temperature range, min.	-50 °C
Recommended industries	Transportation, Machinery	Size of labelling field	23.9 x 9 mm
Type of printing	neutral	UL 94 flammability rating	V-0
Version	Installation with cable ties	Width	15 mm

Conductor and cable markers

Conductor O.D.	7 - 40 mm	Conductor O.D., max.	40 mm
Conductor O.D., min.	7 mm	Conductor cross-section, max.	500 mm ²
Conductor cross-section, min.	16 mm ²	Cross-section for connected wire	16 - 500 mm ²
Halogen	No		

Classifications

ETIM 6.0	EC001530	ETIM 7.0	EC001530
ECLASS 9.0	27-40-04-01	ECLASS 9.1	27-40-04-01
ECLASS 10.0	27-40-04-01	ECLASS 11.0	27-28-11-02

Approvals

ROHS	Conform
------	---------

Downloads

Engineering Data	STEP
Engineering Data	EPLAN, WSCAD

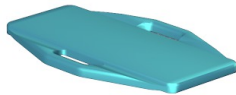
Data sheet

VT SFX 9/24 MC NE BL V0

Weidmüller Interface GmbH & Co. KG
Klingenbergstraße 26
D-32758 Detmold
Germany

www.weidmueller.com

Drawings



X-ON Electronics

Largest Supplier of Electrical and Electronic Components

Click to view similar products for [Wire Labels & Markers](#) category:

Click to view products by [Weidmuller](#) manufacturer:

Other Similar products are found below :

[89078GBEST](#) [89082GBESR](#) [89082GBEST](#) [PCL025-4](#) [5761-2SF](#) [58400](#) [586R734H02](#) [M1.040.0000.6](#) [CRS-CM5M](#) [CRS-M18M](#) [CS1836-000](#) [CS8626-000](#) [CU6337-000](#) [CU6342-000](#) [CU6343-000](#) [CWD01-0](#) [CWD012-0](#) [CWD012-7](#) [CWD015-3](#) [CWD015-7](#) [CWD02-0](#) [CWD02-3](#) [CWD02-4](#) [CWD02-6](#) [CWD02-8](#) [CWD02-A](#) [CWD02-D](#) [CWD02-H](#) [CWD02-K](#) [CWD02-L](#) [CWD02-M](#) [CWD02-P](#) [CWD02-Q](#) [CWD02-R](#) [CWD02-U](#) [CWD02-W](#) [CWD02-Y](#) [CWD03-+](#) [CWD03-0](#) [CWD03-P](#) [CWD06-0](#) [CWD06-8](#) [CWD06-9](#) [CWD06-L](#) [CWD06-N](#) [CWD09-0](#) [CWD09-5](#) [CWD09-7](#) [6806810001](#) [CZ2857-000](#)