

SF12 Series IP67

**SF
12**

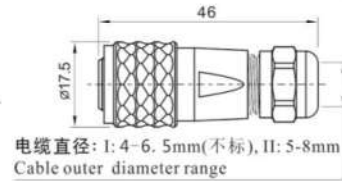


SF1210/P — SF1210/S
插针 Male contact

电缆插头
与SF1211, SF1212, SF1213相配

Cable connector
Mate with SF1211, SF1212, SF1213

电缆外径 Cable outer diameter
I: 4-6.5mm(不标), II: 5-8mm
芯数 Number of contact
插孔 Fmale contact



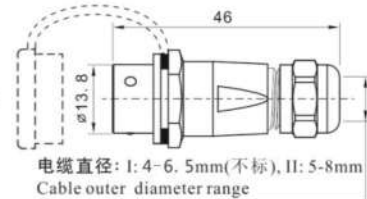
电缆直径: I: 4-6.5mm(不标), II: 5-8mm
Cable outer diameter range



SF1211/P — SF1211/S

电缆对接插座
与SF1210相配

In-line cable connector
Mate with SF1210



电缆直径: I: 4-6.5mm(不标), II: 5-8mm
Cable outer diameter range

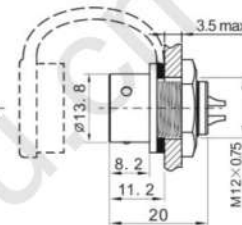


SF1212/P — SF1212/S

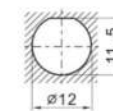
后螺母插座
与SF1210相配

Rear-nut mount
Mate with SF1210

芯数 Number of contact



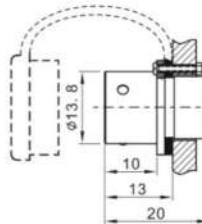
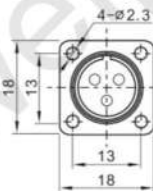
开孔尺寸
Panel cutout



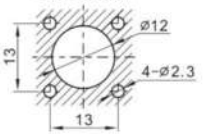
SF1213/P — SF1213/S

方方法兰插座
与SF1210相配

Square flange
Mate with SF1210



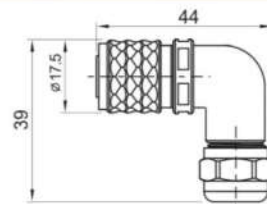
开孔尺寸
Panel cutout



SF1214/P — II SF1214/S — II

弯式电缆插头
与SF1211, SF1212, SF1213相配

Angled cable connector
Mate with SF1211, SF1212, SF1213



电缆直径: 5-8mm
Cable outer diameter range

焊接芯件参数 Solder contact spec

| 芯数 Number of contact | 2 | 3 | 4 | 5 | 6 | 7 | 9 |
|--|--------|--------|----------|----------|----------|----------|---------|
| 公端绝缘体正面图 Male contact face view | | | | | | | |
| 额定电流(A) Rated current (A) | 13 | 13 | 5 | 5 | 5 | 5 | 3 |
| 接触件直径(mm) Contact diameter(mm) | ∅1.6X2 | ∅1.6X3 | ∅1X4 | ∅1X5 | ∅1X6 | ∅1X7 | ∅0.7X9 |
| 工作电压(AC.V) Rated voltage (AC.V) | 250 | 250 | 200 | 180 | 125 | 125 | 125 |
| 耐压(AC.V) 1 min Test voltage(AC.V) 1 min | 1500 | 1500 | 1500 | 1000 | 1000 | 1000 | 1000 |
| 接触电阻(mΩ) Contact resistance (mΩ) | 2.5 | 2.5 | 5 | 5 | 5 | 5 | 10 |
| 线规(mm²/AWG) Wire size(mm²/AWG) | ≤2/14 | ≤2/14 | ≤0.75/18 | ≤0.75/18 | ≤0.75/18 | ≤0.75/18 | ≤0.5/20 |

X-ON Electronics

Largest Supplier of Electrical and Electronic Components

Click to view similar products for [Standard Circular Connector](#) category:

Click to view products by [Weipu](#) manufacturer:

Other Similar products are found below :

[C015 10F006 001 1](#) [5M2530B10P](#) [600247N007](#) [600259N006](#) [600273N007](#) [600432N009](#) [6280-2PG-519](#) [6280-3PG-311](#) [6280-3SG-311](#)
[6280-7SG-3DC](#) [6280-7SG-522](#) [6282-5PG-311](#) [6282-6PG-519](#) [6282-8SG-311](#) [6283-11](#) [6283-15](#) [6290](#) [6293](#) [6382-2PG-311](#) [6382-2PG-3DC](#)
[6382-2SG-321](#) [6382-2SG-3DC](#) [6382-4SG-516](#) [67-03E20-37P](#) [681-PMG](#) [CXS3102A14S2P](#) [CXS3102A181S](#) [CXS3106A14S6S](#)
[D38999/20FC8SA L/C](#) [MB12P-1](#) [MB12R-6](#) [7251-2PG-300](#) [7251-2SG-300](#) [7251-4PG-300](#) [7251-4SG-300](#) [7251-5PG-300](#) [7251-5SG-300](#)
[7251-6SG-300](#) [7251-7PG-300](#) [7251-8PG-300](#) [7271-6SG-300](#) [7282-3PG-300-CH3](#) [73000005663](#) [75-190011-03P](#) [75-190216-08S](#) [75-190218-](#)
[10P](#) [75-214636-52P](#) [75-474118-10P](#) [75-474211-03P](#) [75-474218-19S](#)