

SF12 Series IP67

**SF
12**

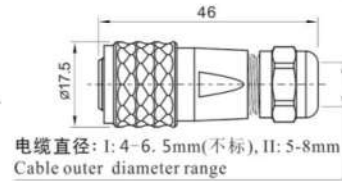


SF1210/P — SF1210/S
插针 Male contact

电缆插头
与SF1211, SF1212, SF1213相配

Cable connector
Mate with SF1211, SF1212, SF1213

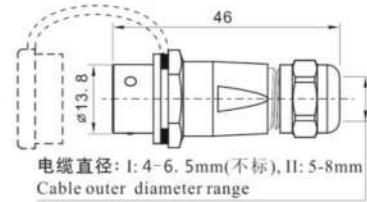
电缆外径 Cable outer diameter
I: 4-6.5mm(不标), II: 5-8mm
芯数 Number of contact
插孔 Fmale contact



SF1211/P — SF1211/S

电缆对接插座
与SF1210相配

In-line cable connector
Mate with SF1210

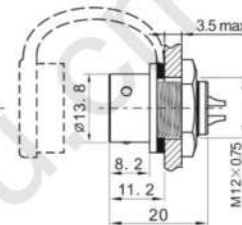


SF1212/P — SF1212/S

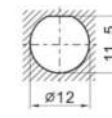
后螺母插座
与SF1210相配

Rear-nut mount
Mate with SF1210

芯数 Number of contact



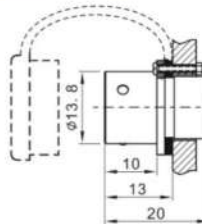
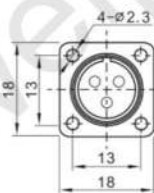
开孔尺寸
Panel cutout



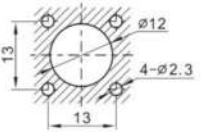
SF1213/P — SF1213/S

方方法兰插座
与SF1210相配

Square flange
Mate with SF1210



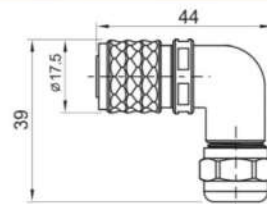
开孔尺寸
Panel cutout



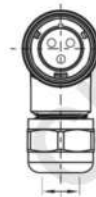
SF1214/P — II SF1214/S — II

弯式电缆插头
与SF1211, SF1212, SF1213相配

Angled cable connector
Mate with SF1211, SF1212, SF1213



电缆直径: 5-8mm
Cable outer diameter range



焊接芯件参数 Solder contact spec

芯数 Number of contact	2	3	4	5	6	7	9
公端绝缘体正面图 Male contact face view							
额定电流(A) Rated current (A)	13	13	5	5	5	5	3
接触件直径(mm) Contact diameter(mm)	∅1.6X2	∅1.6X3	∅1X4	∅1X5	∅1X6	∅1X7	∅0.7X9
工作电压(AC.V) Rated voltage (AC.V)	250	250	200	180	125	125	125
耐压(AC.V) 1 min Test voltage(AC.V) 1 min	1500	1500	1500	1000	1000	1000	1000
接触电阻(mΩ) Contact resistance (mΩ)	2.5	2.5	5	5	5	5	10
线规(mm²/AWG) Wire size(mm²/AWG)	≤2/14	≤2/14	≤0.75/18	≤0.75/18	≤0.75/18	≤0.75/18	≤0.5/20

X-ON Electronics

Largest Supplier of Electrical and Electronic Components

Click to view similar products for [weipu manufacturer](#):

Other Similar products are found below :

[SP1310/P4I](#) [SP1310/S7I](#) [SP2110/P4II](#) [SP2110/S2 I 1N](#) [WS16K2/ZQ](#) [WS24K2/ZM](#) [WS24K9/ZM](#) [WS24K12/ZM](#) [WS24K2/ZQ](#) [WS24K3/ZQ](#)
[WS24K4/ZQ](#) [WS24K9/ZQ](#) [WS24K10/ZQ](#) [WS24K12/ZQ](#) [WS24K19/ZQ](#) [WS28J26/TQ](#) [WS28K2/ZM](#) [WS28K7/ZM](#) [WS28K8/ZM](#)
[WS28K9/ZM](#) [WS28K10/ZM](#) [WS28K12/ZM](#) [WS28K16/ZM](#) [WS28K17/ZM](#) [WS28K24/ZM](#) [WS28K26/ZM](#) [WS28K2/ZQ](#) [WS28K16/ZQ](#)
[WS28K17/ZQ](#) [WS28K20/ZQ](#) [WS28K24/ZQ](#) [WS20K7/ZM](#) [WS20K5/ZQ](#) [WS20K7/ZQ](#) [WS20K12/ZQ](#) [WS20K15/ZQ](#) [WS28K3/ZQ](#)
[WS28K4/ZQ](#) [WS28K7/ZQ](#) [WS28K8/ZQ](#) [WS28K9/ZQ](#) [WS28K10/ZQ](#) [WS28K12/ZQ](#) [SP2113/P4/2N](#) [SP1712/S7](#) [WS16J5/TQ](#) [WS24K10/Z](#)
[WS20K2/ZM](#) [SF1212/S2](#) [WS28J10/TQ](#)