

## SF12 Series IP67

**SF  
12**

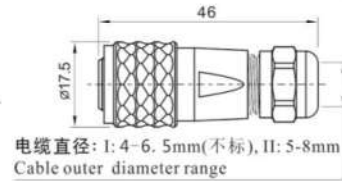


SF1210/P — SF1210/S  
插针 Male contact

电缆插头  
与SF1211, SF1212, SF1213相配

Cable connector  
Mate with SF1211, SF1212, SF1213

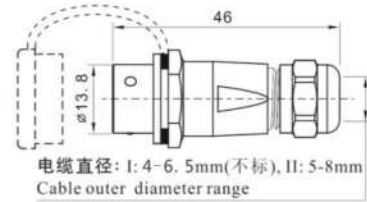
电缆外径 Cable outer diameter  
I: 4-6.5mm(不标), II: 5-8mm  
芯数 Number of contact  
插孔 Fmale contact



SF1211/P — SF1211/S

电缆对接插座  
与SF1210相配

In-line cable connector  
Mate with SF1210

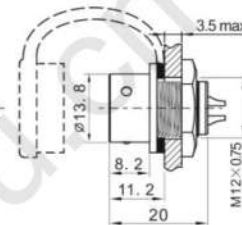


SF1212/P — SF1212/S

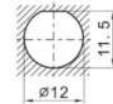
后螺母插座  
与SF1210相配

Rear-nut mount  
Mate with SF1210

芯数 Number of contact



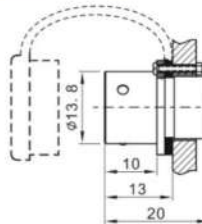
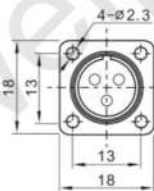
开孔尺寸  
Panel cutout



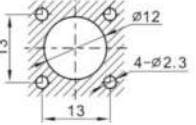
SF1213/P — SF1213/S

方方法兰插座  
与SF1210相配

Square flange  
Mate with SF1210



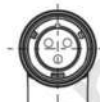
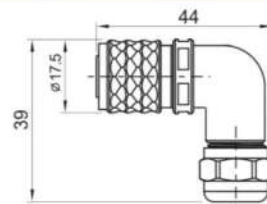
开孔尺寸  
Panel cutout



SF1214/P — II SF1214/S — II

弯式电缆插头  
与SF1211, SF1212, SF1213相配

Angled cable connector  
Mate with SF1211, SF1212, SF1213



电缆直径: 5-8mm  
Cable outer diameter range

### 焊接芯件参数 Solder contact spec

芯数 Number of contact	2	3	4	5	6	7	9
公端绝缘体正面图 Male contact face view							
额定电流(A) Rated current (A)	13	13	5	5	5	5	3
接触件直径(mm) Contact diameter(mm)	∅1.6X2	∅1.6X3	∅1X4	∅1X5	∅1X6	∅1X7	∅0.7X9
工作电压(AC.V) Rated voltage (AC.V)	250	250	200	180	125	125	125
耐压(AC.V) 1 min Test voltage(AC.V) 1 min	1500	1500	1500	1000	1000	1000	1000
接触电阻(mΩ) Contact resistance (mΩ)	2.5	2.5	5	5	5	5	10
线规(mm <sup>2</sup> /AWG) Wire size(mm <sup>2</sup> /AWG)	≤2/14	≤2/14	≤0.75/18	≤0.75/18	≤0.75/18	≤0.75/18	≤0.5/20

## X-ON Electronics

Largest Supplier of Electrical and Electronic Components

*Click to view similar products for [Standard Circular Connector](#) category:*

*Click to view products by [Weipu](#) manufacturer:*

Other Similar products are found below :

[C015](#) [10F006](#) [001](#) [1](#) [5M2530B10P](#) [600247N007](#) [600259N006](#) [600273N007](#) [600432N009](#) [6280-2PG-519](#) [6280-3PG-311](#) [6280-3SG-311](#)  
[6280-7SG-3DC](#) [6280-7SG-522](#) [6282-5PG-311](#) [6282-6PG-519](#) [6282-8SG-311](#) [6283-11](#) [6283-15](#) [6290](#) [6293](#) [6382-2PG-311](#) [6382-2PG-3DC](#)  
[6382-2SG-321](#) [6382-2SG-3DC](#) [6382-4SG-516](#) [67-03E20-37P](#) [681-PMG](#) [CXS3102A14S2P](#) [CXS3102A181S](#) [CXS3106A14S6S](#)  
[D38999/20FC8SA L/C](#) [MB12P-1](#) [MB12R-6](#) [7251-2PG-300](#) [7251-2SG-300](#) [7251-4PG-300](#) [7251-4SG-300](#) [7251-5PG-300](#) [7251-5SG-300](#)  
[7251-6SG-300](#) [7251-7PG-300](#) [7251-8PG-300](#) [7271-6SG-300](#) [7282-3PG-300-CH3](#) [73000005663](#) [75-190011-03P](#) [75-190216-08S](#) [75-190218-](#)  
[10P](#) [75-214636-52P](#) [75-474118-10P](#) [75-474211-03P](#) [75-474218-19S](#)