

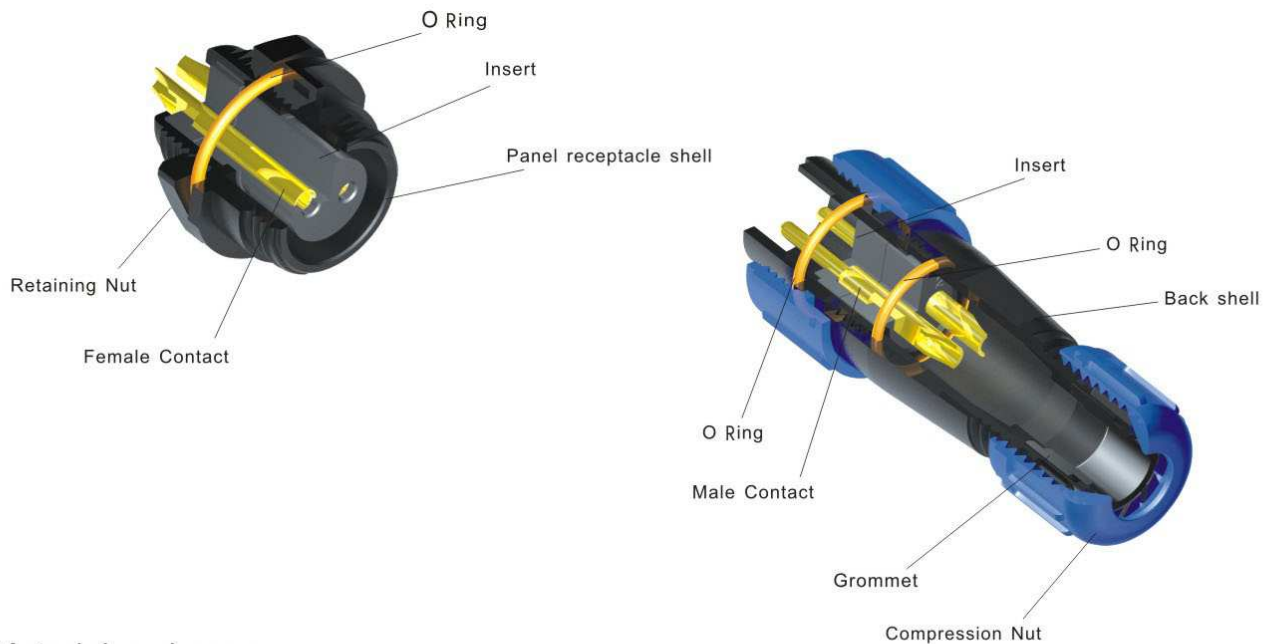
CIRCULAR CONNECTORS SERIES

SP
13、21



IP68 Plastic Connectors with threaded coupling

SP series circular connector meets the requirements of IP68, it works reliably indoor, outdoor and under water harsh environment applications. Patent pending



Material and spec

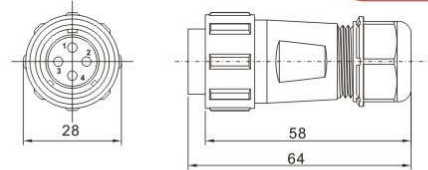
Back shell	V-0 Fire resistance V-0
Insert material	Temperature range 260°C
Contact material	brass
Contact plating	gold over nickel
Contact termination style	solder
Cable OD range	SP13 Type I 3-6.5mm SP13 Type II 4-8mm SP21 6-12mm
IP rating	IP68
Mating cycle	> minimum 500 times
Temperature range	-40+85°C
Humidity	+40°C 95±3%
Vibration	10~500Hz 100m/S
Shock	40~80/min 250m/S

SP21 Series

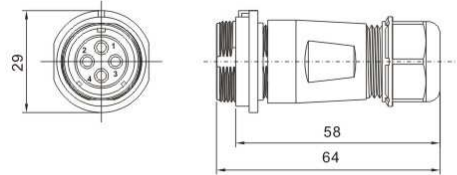
**SP
21**



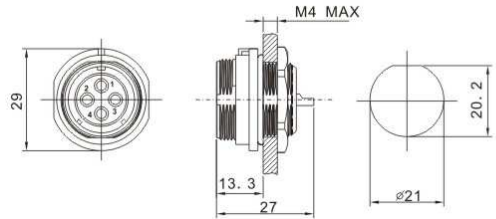
This item mates with
SP2111, SP2112, SP2113
Threaded coupling
Solder termination



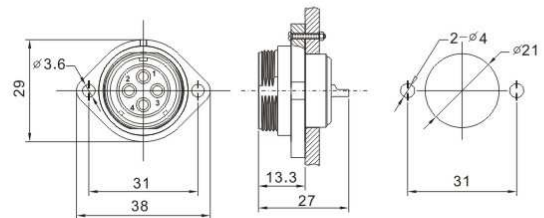
This item mates with
SP2110
Threaded coupling
Solder termination



This item mates with
SP2110,
"D" hole with a nut on
the back
Solder termination



This item mates with
SP2110,
Install by screws
Solder termination



Insert configuration, face view of female

Pin Number	2	3	4	5	7	9	12
Insert configuration							
	2pole	3pole	4pole	5pole	7pole	9pole	12pole
Rated current A	30A	30A	30A	15A	15A	5A	5A
Size and No. of contact	∅ 3X2	∅ 3X3	∅ 3X4	∅ 2X5	∅ 2X7	∅ 1X9	∅ 1X12
Rated voltage (A.C. V. rms)	500V	500V	500V	500V	500V	500V	400V
Test voltage (A.C. V) 1min	1500V	1500V	1500V	1500V	1500V	1500V	1200V
Contact resistance mΩ	1	1	1	2.5	2.5	5	5
Insulation resistance mΩ	2000	2000	2000	2000	2000	2000	2000
Wire size mm ² /AWG	≤4.17/11	≤4.17/11	≤4.17/11	≤2/14	≤2/14	≤0.785/18	≤0.785/18

X-ON Electronics

Largest Supplier of Electrical and Electronic Components

Click to view similar products for [Circular Metric Connectors](#) category:

Click to view products by [Weipu](#) manufacturer:

Other Similar products are found below :

[600X518037X](#) [MA1EAF1200](#) [6STD09SAM99B70X](#) [8R4A00A18M020](#) [1300140094](#) [130203-0054](#) [1300150099](#) [1-3637-600-5205](#) [1A4000-348](#) [8R4006A16M010](#) [8R5006A18A120](#) [1R3006A20M005](#) [RF-12P1N8A80DU](#) [RF-12P1N8A90DU](#) [41-01016](#) [41-40010](#) [41-40011](#) [41-40017](#) [42-01015](#) [4-22279-4](#) [4-22281-1](#) [4-22284-9](#) [43-10041](#) [41-40005](#) [41-40016](#) [43-00132](#) [XS3P-M421-2](#) [600X518050X](#) [SACC-DSI-FS-5P-PG9-L180 SC](#) [8R4000A16M010](#) [1R3004A20A1201](#) [N03FA03144](#) [1300140077](#) [41-01117](#) [XS2RD4265](#) [RSC 4/9](#) [XS2R-D426-1](#) [XS8A-0441](#) [859RD04-103R004](#) [860RD04-113R004](#) [860-X08-213R004](#) [1-213245-2](#) [2273142-2](#) [LC20-02PMFS-SW8001](#) [1604360](#) [21031121405](#) [MSAS-12PMMP-SF8001](#) [8P-04BFFB-SL7001](#) [21038122406](#) [41-50000](#)