

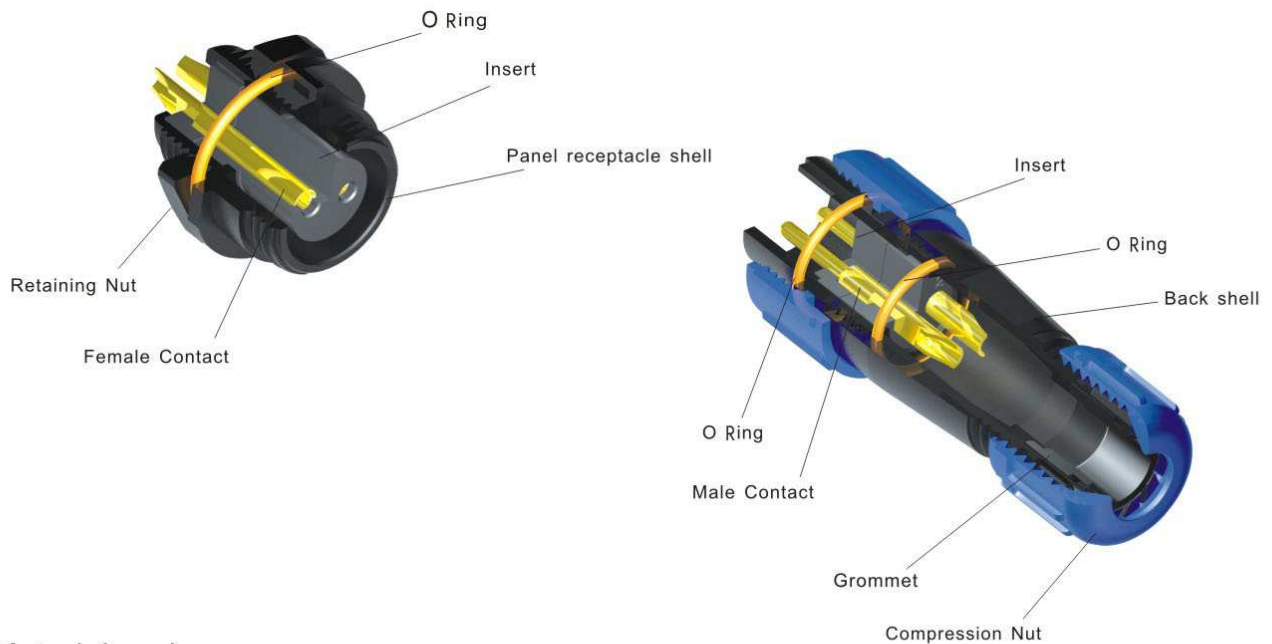
## CIRCULAR CONNECTORS SERIES

**SP**  
13、21



### IP68 Plastic Connectors with threaded coupling

SP series circular connector meets the requirements of IP68, it works reliably indoor, outdoor and under water harsh environment applications. Patent pending



### Material and spec

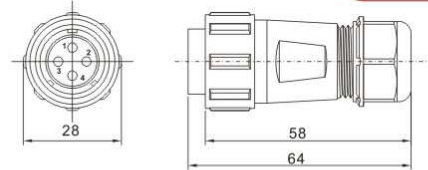
|                           |  |
|---------------------------|--|
| Back shell                | V-0 Fire resistance V-0                                  |
| Insert material           | Temperature range 260°C                                  |
| Contact material          | brass  |
| Contact plating           | gold over nickel   |
| Contact termination style | solder   |
| Cable OD range            | SP13 Type I 3-6.5mm    SP13 Type II 4-8mm    SP21 6-12mm |
| IP rating                 | IP68   |
| Mating cycle              | > minimum 500 times                                      |
| Temperature range         | -40+85°C   |
| Humidity                  | +40°C 95±3%  |
| Vibration                 | 10~500Hz    100m/S                                       |
| Shock                     | 40~80/min    250m/S                                      |

## SP21 Series

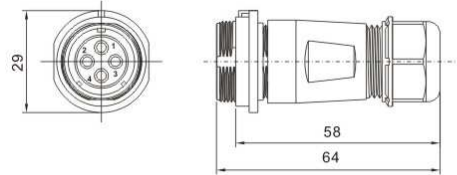
**SP  
21**



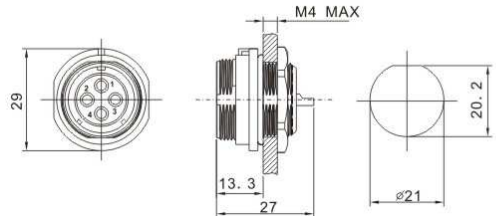
This item mates with  
SP2111, SP2112, SP2113  
Threaded coupling  
Solder termination



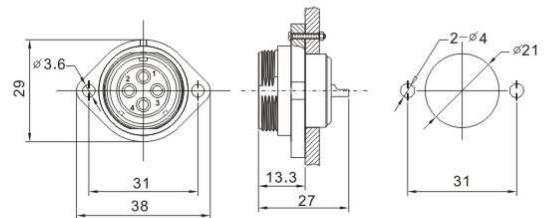
This item mates with  
SP2110  
Threaded coupling  
Solder termination



This item mates with  
SP2110,  
"D" hole with a nut on  
the back  
Solder termination



This item mates with  
SP2110,  
Install by screws  
Solder termination



### Insert configuration, face view of female

| Pin Number                     | 2        | 3        | 4        | 5     | 7     | 9         | 12        |
|--------------------------------|----------|----------|----------|-------|-------|-----------|-----------|
| Insert configuration           |          |          |          |       |       |           |           |
|                                | 2pole    | 3pole    | 4pole    | 5pole | 7pole | 9pole     | 12pole    |
| Rated current A                | 30A      | 30A      | 30A      | 15A   | 15A   | 5A        | 5A        |
| Size and No. of contact        | ∅ 3X2    | ∅ 3X3    | ∅ 3X4    | ∅ 2X5 | ∅ 2X7 | ∅ 1X9     | ∅ 1X12    |
| Rated voltage (A.C. V. rms)    | 500V     | 500V     | 500V     | 500V  | 500V  | 500V      | 400V      |
| Test voltage (A.C. V) 1min     | 1500V    | 1500V    | 1500V    | 1500V | 1500V | 1500V     | 1200V     |
| Contact resistance mΩ          | 1        | 1        | 1        | 2.5   | 2.5   | 5         | 5         |
| Insulation resistance mΩ       | 2000     | 2000     | 2000     | 2000  | 2000  | 2000      | 2000      |
| Wire size mm <sup>2</sup> /AWG | ≤4.17/11 | ≤4.17/11 | ≤4.17/11 | ≤2/14 | ≤2/14 | ≤0.785/18 | ≤0.785/18 |

## X-ON Electronics

Largest Supplier of Electrical and Electronic Components

*Click to view similar products for [Circular Push Pull Connectors](#) category:*

*Click to view products by [Weipu](#) manufacturer:*

Other Similar products are found below :

[6407-249V-11273P](#) [6408-201V-13273](#) [6408-202V-17343](#) [FAG.2B.319.CYC](#) [FLS.01.250.DLAE24](#) [ABF.1S.250.NTA](#) [1332M107MS](#)  
[1589430-2](#) [ERA.01.250.DLL](#) [HVP.03.250.CLLPV](#) [CAJ.M34.SLL.C72GZ](#) [FLC.00.250.CTAC27](#) [FLC.00.250.CTAC31](#) [FPG.0B.305.CLAD52](#)  
[PXG.M0.8GG.NG](#) [BRR.3S.200.PZVG](#) [ECG.00.304.CLL](#) [ECP.0S.304.CLN](#) [EGA.00.303.CLL](#) [6408-201V-11273](#) [6408-201V-11343](#) [6408-](#)  
[202V-25273](#) [PAC.M0.4NL.AC52J](#) [980-0009-471](#) [NCG044SC2DC006](#) [GMA.4B.013.DN](#) [1331E103MZ](#) [1332EV212FZ](#)  
[FPG.00.304.CLAD35Z](#) [PKG.220.UJ](#) [342491](#) [331294](#) [ERA.4S.434.CJL](#) [342372](#) [330210](#) [330224](#) [PKG.M0.6NL.LZ](#) [PCA.1S.303.ZLLT](#)  
[FHG.00.305.CLAD35](#) [FGU.1M.308.XLCT](#) [CNB.M19.GLLV](#) [39050630713002](#) [QPD C 4PE6 0 2X12-20 BK](#) [1331-P-103-MZ](#) [1332E319FZ](#)  
[308829](#) [POB.186.GN](#) [FFM.00.131.LC](#) [342379](#) [320847](#)