

Feature -

Multiple keys and poles
interlock and individual lock

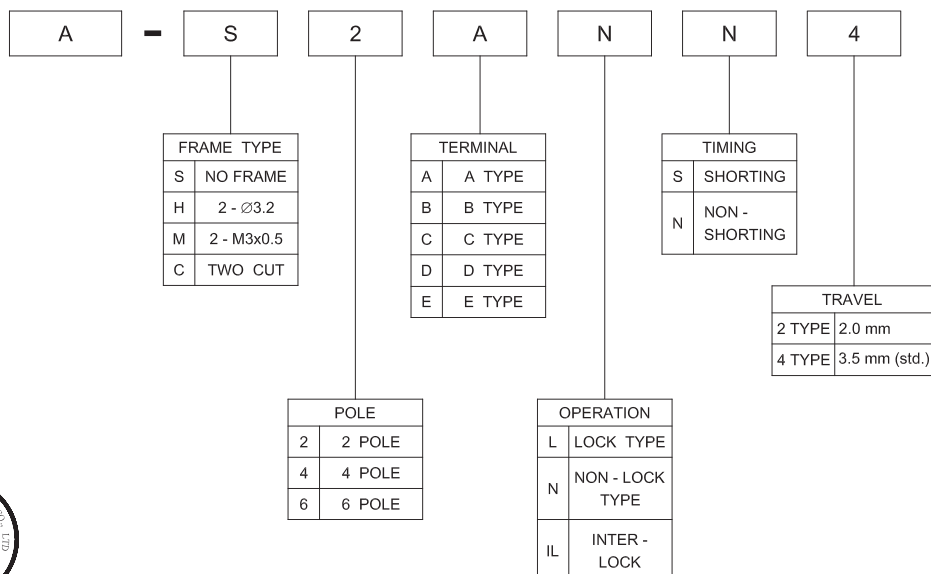
Application -

various switching purpose
in all home electronic equipments
and industrial electronic equipments

► SPECIFICATIONS

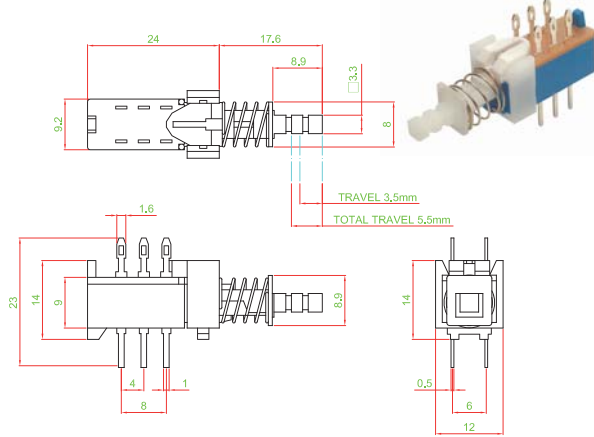
SWITCH SPECIFICATIONS	
POLE - POSITION	2P2T , 4P2T , Momentary and Lock Type are Available
CONTACT RATING	100 V AC , 0.5 A ; 250 V AC , 0.2 A ; 25 V D , 1A
CONTACT RESISTANCE	40 mΩ MAX. 1.5 V DC ; 100 mA , by Method of Voltage DROP
INSULATION RESISTANCE	100 MΩ MIN. 500 V DC
DIELECTRIC STRENGTH	Breakdown is not Allowable ; 500 V AC for 1 Minute
OPERATING FORCE	2P2T - 250 ± 100gf 4P2T - 350 ± 100gf
OPERATING LIFE	10,000 cycles
OPERATING TEMPERATURE RANGE	-20°C ~ 70°C
TOTAL TRAVEL	5.5 (or 3.5) ± 0.3 mm

► HOW TO ORDER

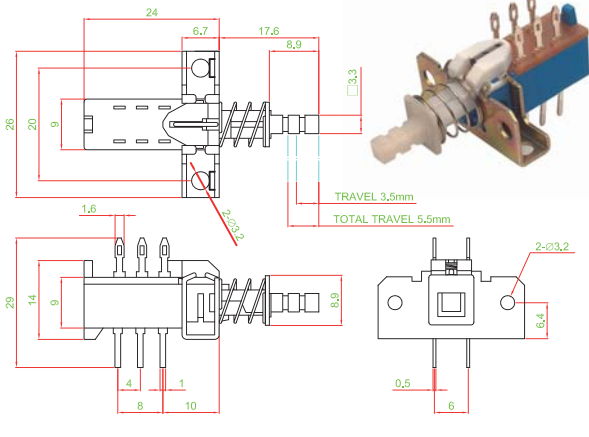


► DIMENSION

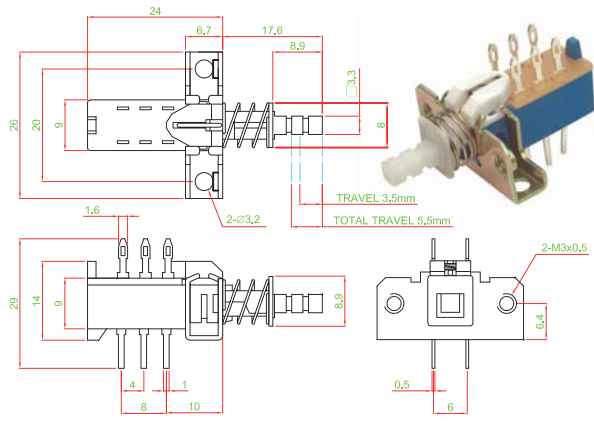
A - S2ANN4



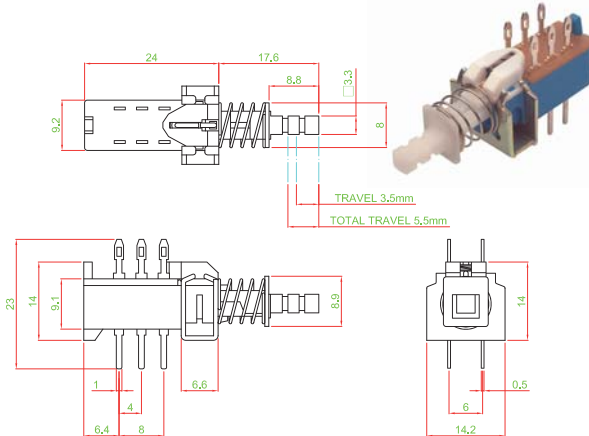
A - H2ALN4



A - M2ALN4

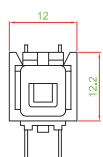


A - C2ALN4

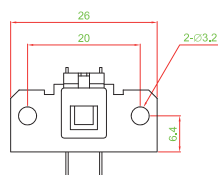


► FRAME TYPE

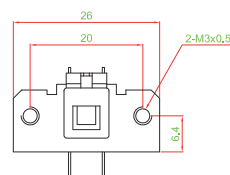
S TYPE



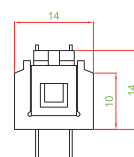
H TYPE



M TYPE

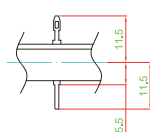


C TYPE

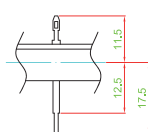


► FRAME TYPE

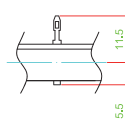
A



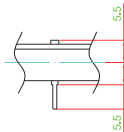
B



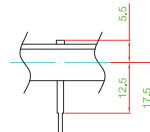
C



D

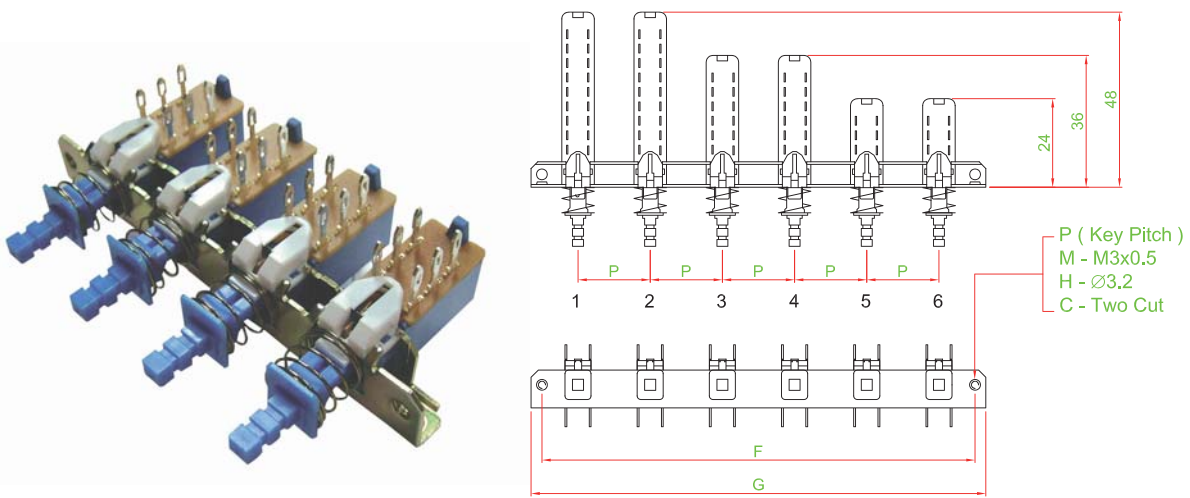


E



▶ P.C.B LAYOUT	▶ SCHEMATIC	▶ POLE & LENGTH								
		<table border="1" style="margin-left: auto; margin-right: auto;"> <tr> <th>POLE</th> <th>2</th> <th>4</th> <th>6</th> </tr> <tr> <th>L(mm)</th> <td>24</td> <td>36</td> <td>48</td> </tr> </table> <p>▶ MATERIAL</p> <ul style="list-style-type: none"> ■ ACTUATOR : POM ■ TERMINAL : BRASS SILVER PLATING ■ BASE FRAME : PA + GF ■ SPRING : STAINLESS STEEL 	POLE	2	4	6	L(mm)	24	36	48
POLE	2	4	6							
L(mm)	24	36	48							

▶ INTER-LOCK & LENGTH



SIZE PITCH	1		3		5		7		9		10	
	G	F	G	F	G	F	G	F	G	F	G	F
10	26	20	46	40	66	60	86	80	106	100		
12.5	24	18	51	45	76	70	101	95	126	120		
15			56	50	86	80	116	110	146	140		
17.5	F		F	61	55	F	96	90	F	131	125	F
20				66	60		106	100		146	140	
10	36	30	56	50	76	70	96	90	116	110		
12.5	38.5	32.5	63.5	57.5	88.5	82.5	113.5	107.5	138.5	132.5		
15	41	35	71	65	101	95	131	125	161	155		
17.5	F	43.5	F	78.5	72.5	F	113.5	107.5	F	148.5	142.5	F
20		46		86	80		126	120		166	160	

▶ MULTI - KEY TYPE AND INTER-LOCK TYPE

FRAME TYPE M M3x0.5 H Ø3.2 C TWO CUT

KEY	1	2	3	4	5	6	7	8	9	10	11	12	13	14	15	16
OPTION / 選項																
POLE / 回路數																
TERMINAL TYPE / 端子																
OPERATING / 動作																
TIMING N / S																
TRAVEL / 行程																
KNOB																
PITCH / 間距	<input type="checkbox"/> 10mm <input type="checkbox"/> 12.5mm <input type="checkbox"/> 15mm <input type="checkbox"/> 17.5mm <input type="checkbox"/> 20mm <input type="checkbox"/> 25mm <input type="checkbox"/> 30mm															

X-ON Electronics

Largest Supplier of Electrical and Electronic Components

Click to view similar products for [Pushbutton Switches](#) category:

Click to view products by [Well Buying](#) manufacturer:

Other Similar products are found below :

[8940K2012](#) [LW1L-M1C10V-A](#) [LW1L-M1C70-A](#) [LW2L-A1C20M-GD](#) [LW2L-M1C20M-A](#) [60324L](#) [M22-D-R-GB0/K11](#) [M7E-HRN2](#)
[67021K512](#) [67081K512X](#) [701PB580](#) [7199K101](#) [810K12910](#) [810KSV30B](#) [MML21EA2ADK](#) [MML21KA3ABK](#) [MML23KA3AC05K-001](#)
[MML23KW3AA01W](#) [8418K2](#) [8442K3](#) [8450K1](#) [860K11911T01A](#) [861901](#) [861K11911T01A07](#) [861K13810T00A14](#) [861K13911](#)
[8646AB6X718UL](#) [8646ABUL](#) [9001KXRK](#) [907AYY100](#) [PMHD155A1](#) [9533CD4+U574+U4922](#) [95-414.000](#) [99-450.837](#) [99-453.837](#)
[PV3H2B0NN-341](#) [1203MRA](#) [A22NZBGANGA](#) [A22NZBNANGA](#) [A22NZMPATRA](#) [A2PMA1X03EC56](#) [A3A-5123-02](#) [A3A-7140](#) [A3A-7310](#) [A3A-7340](#) [A3U-TMW-A2C-5M](#) [A595](#) [12037A2ULCSA](#) [ABD122N-B](#) [1211390004](#)