



TACT
SWITCH

PUSH
BUTTON
SWITCH

LED TOUCH
SENSOR
SWITCH

5 DIRECTION
NAVIGATION
SWITCH
WITH LED

MEMBRANE
SWITCH

LED LIGHT
BAR

SLIDE
SWITCH

ROTARY
SWITCH

ROCKER
SWITCH

DETECT
SWITCH

ENCODER

INTERRUPTER

MINIATURE
MICRO
SWITCH

TELEPHONE
HOOK
SWITCH

DOOR
SWITCH

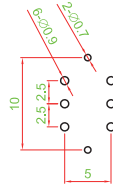
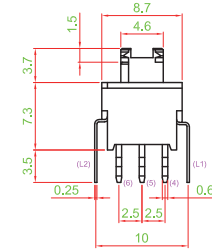
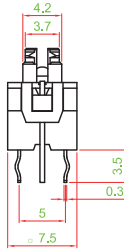
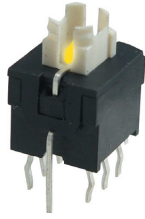
MINI SIZE
SOCKET

KNOB

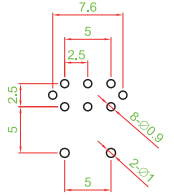
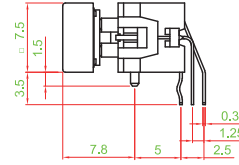
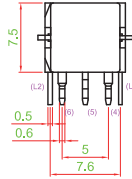
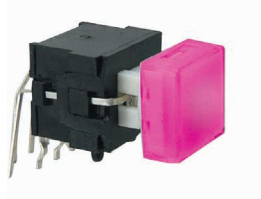
CAP
SYMBOL

▶ **TERMINAL TYPE**

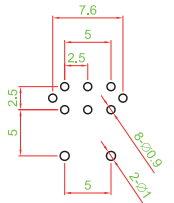
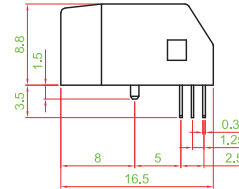
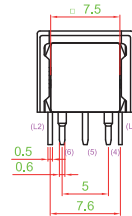
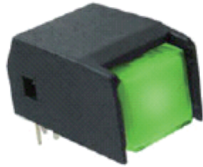
PS004-L22NPXXX □□□□



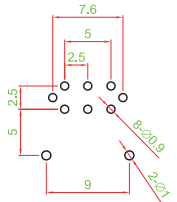
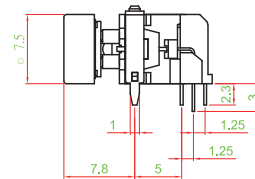
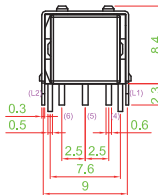
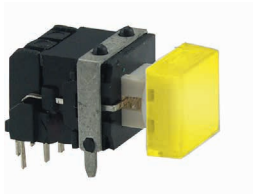
PS004-N22NRS1XT □□□□



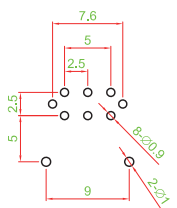
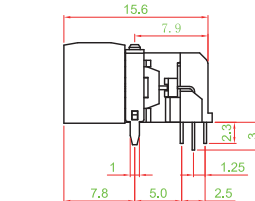
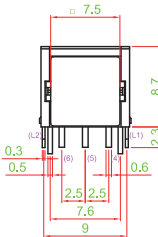
PS004-N22NRS1KT □□□□



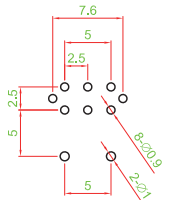
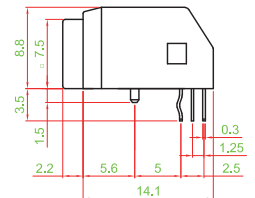
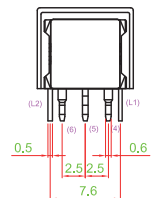
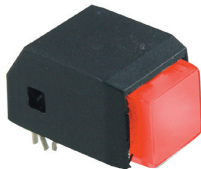
PS004-N22NR1S1XT □□□□



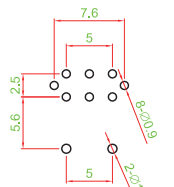
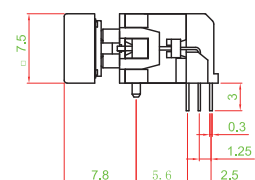
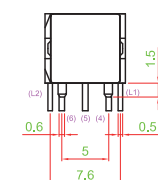
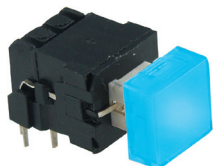
PS004-N22NR2S1KT □□□□



PS004-N22NR3S1KT □□□□



PS004-N22NR4S1XT □□□□

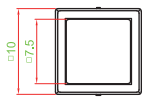




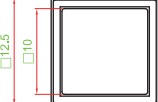
▶ CAP TYPE



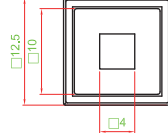
S1 TYPE



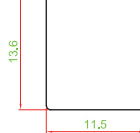
S2 TYPE



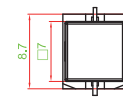
S2H TYPE



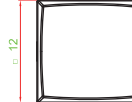
S3 TYPE



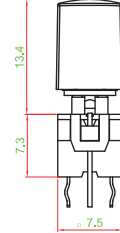
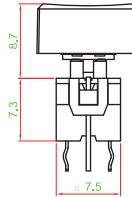
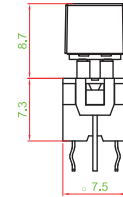
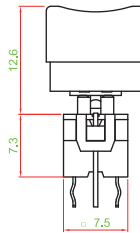
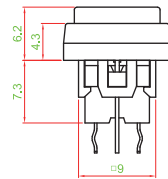
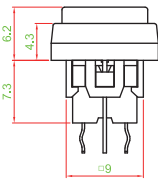
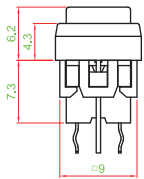
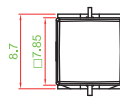
S4 TYPE



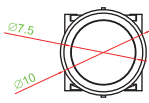
S5 TYPE



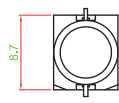
S6 TYPE



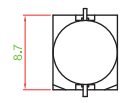
R1 TYPE



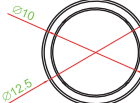
R1A TYPE



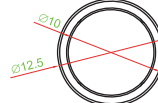
R1B TYPE



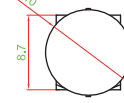
R2 TYPE



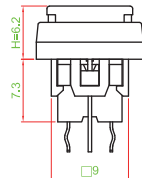
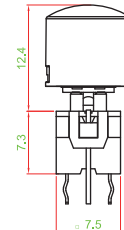
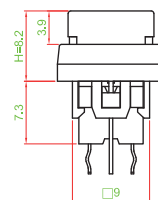
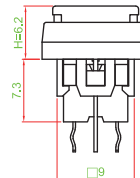
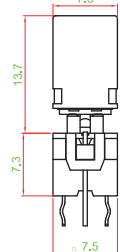
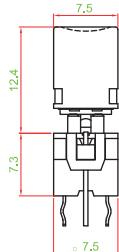
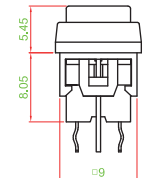
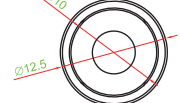
R2.1 TYPE



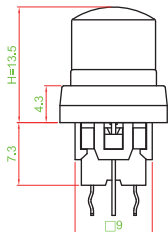
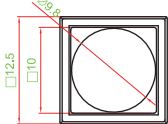
R2.2 TYPE



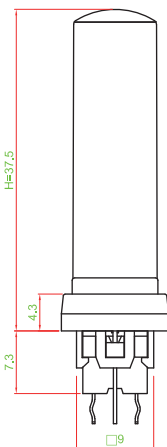
R2H TYPE



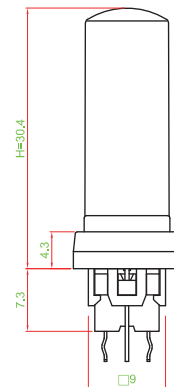
R3 TYPE



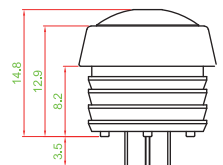
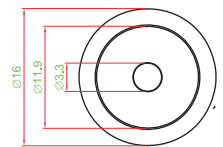
R3.1 TYPE



R3.2 TYPE



R4 TYPE



- TACT SWITCH
- PUSH BUTTON SWITCH
- LED TOUCH SENSOR SWITCH
- 5 DIRECTION NAVIGATION SWITCH WITH LED
- MEMBRANE SWITCH
- LED LIGHT BAR
- SLIDE SWITCH
- ROTARY SWITCH
- ROCKER SWITCH
- DETECT SWITCH
- ENCODER
- INTERRUPTER
- MINIATURE MICRO SWITCH
- TELEPHONE HOOK SWITCH
- DOOR SWITCH
- MINI SIZE SOCKET
- KNOB
- CAP SYMBOL

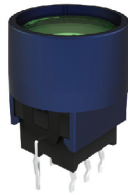
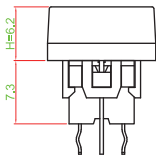
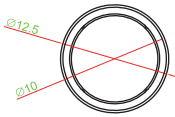


- TACT SWITCH
- PUSH BUTTON SWITCH
- LED TOUCH SENSOR SWITCH
- 5 DIRECTION NAVIGATION SWITCH WITH LED
- MEMBRANE SWITCH
- LED LIGHT BAR
- SLIDE SWITCH
- ROTARY SWITCH
- ROCKER SWITCH
- DETECT SWITCH
- ENCODER
- INTERRUPTER SWITCH
- MINIATURE MICRO SWITCH
- TELEPHONE HOOK SWITCH
- DOOR SWITCH
- MINI SIZE SOCKET
- KNOB
- CAP SYMBOL

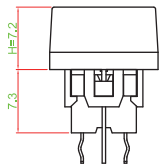
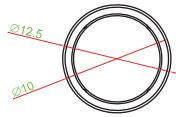
▶ CAP TYPE



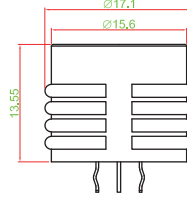
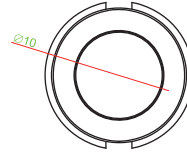
R2A TYPE



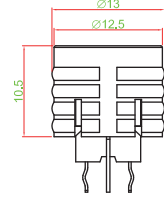
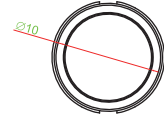
R2B TYPE



R2C TYPE



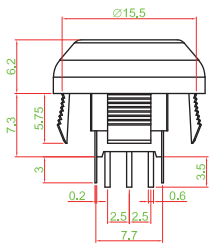
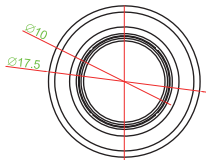
R2D TYPE



▶ CAP TYPE (PANEL MOUNT)



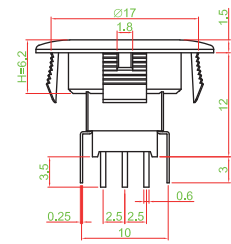
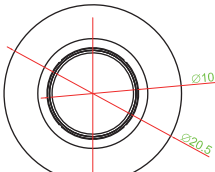
R2E TYPE



Z	D
0 ~ 0.5	15.6 ~ 15.7
0.5 ~ 2.0	15.7 ~ 15.8
2.0 ~ 2.5	15.8 ~ 15.9
2.5 ~ 3.0	15.9 ~ 16.0
3.0 ~ 3.5	16.0 ~ 16.1



R2F/ R2.1F TYPE

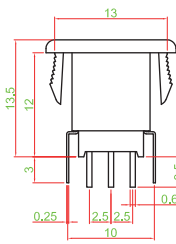
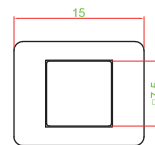


Z	D
0 ~ 0.5	17 ~ 17.1
0.5 ~ 2.0	17.1 ~ 17.2
2.0 ~ 2.5	17.2 ~ 17.3
2.5 ~ 3.0	17.3 ~ 17.4
3.0 ~ 3.5	17.5 ~ 17.6

CAP	DIMENSION
R2F	H=6.2 mm
R2.1F	H=8.2 mm



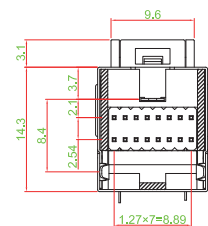
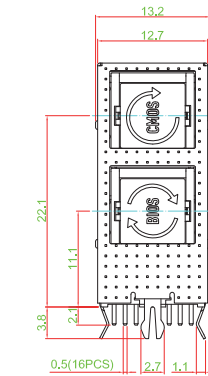
S1A TYPE



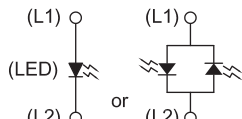
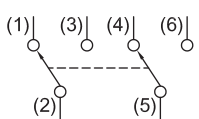
PANEL THICK	W
0.75 ~ 1.25	13.1 ~ 13.2
1.25 ~ 2.0	13.2 ~ 13.3
2.0 ~ 3.0	13.3 ~ 13.4



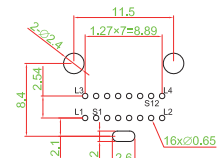
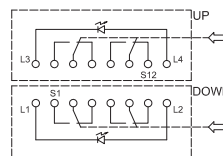
PS004-T42NR5S1SK □□□□



▶ CIRCUIT



TERMINAL TYPE : R5



X-ON Electronics

Largest Supplier of Electrical and Electronic Components

Click to view similar products for [Pushbutton Switches](#) category:

Click to view products by [Well Buying](#) manufacturer:

Other Similar products are found below :

[8940K2012](#) [LW1L-M1C10V-A](#) [LW1L-M1C70-A](#) [LW2L-A1C20M-GD](#) [LW2L-M1C20M-A](#) [60324L](#) [M22-D-R-GB0/K11](#) [M7E-HRN2](#)
[67021K512](#) [67081K512X](#) [701PB580](#) [7199K101](#) [810K12910](#) [810KSV30B](#) [MML21EA2ADK](#) [MML21KA3ABK](#) [MML23KA3AC05K-001](#)
[MML23KW3AA01W](#) [8418K2](#) [8442K3](#) [8450K1](#) [860K11911T01A](#) [861901](#) [861K11911T01A07](#) [861K13810T00A14](#) [861K13911](#)
[8646AB6X718UL](#) [8646ABUL](#) [9001KXRK](#) [907AYY100](#) [PMHD155A1](#) [9533CD4+U574+U4922](#) [95-414.000](#) [99-450.837](#) [99-453.837](#)
[PV3H2B0NN-341](#) [1203MRA](#) [A22NZBGANGA](#) [A22NZBNANGA](#) [A22NZMPATRA](#) [A2PMA1X03EC56](#) [A3A-5123-02](#) [A3A-7140](#) [A3A-7310](#) [A3A-7340](#) [A3U-TMW-A2C-5M](#) [A595](#) [12037A2ULCSA](#) [ABD122N-B](#) [1211390004](#)