



- TACT SWITCH
- PUSH BUTTON SWITCH
- LED TOUCH SENSOR SWITCH
- 5 DIRECTION NAVIGATION SWITCH WITH LED
- MEMBRANE SWITCH
- LED LIGHT BAR
- SLIDE SWITCH
- ROTARY SWITCH
- ROCKER SWITCH
- DETECT SWITCH
- ENCODER
- INTERRUPTER
- MINIATURE MICRO SWITCH
- TELEPHONE HOOK SWITCH
- DOOR SWITCH
- MINI SIZE SOCKET
- KNOB
- CAP SYMBOL

### Feature :

- Small size
- Bi-color LED illuminated available
- Long electrical life cycles

### Application :

- Consumer products
- Computer products
- Instrumentation
- Communication equipments

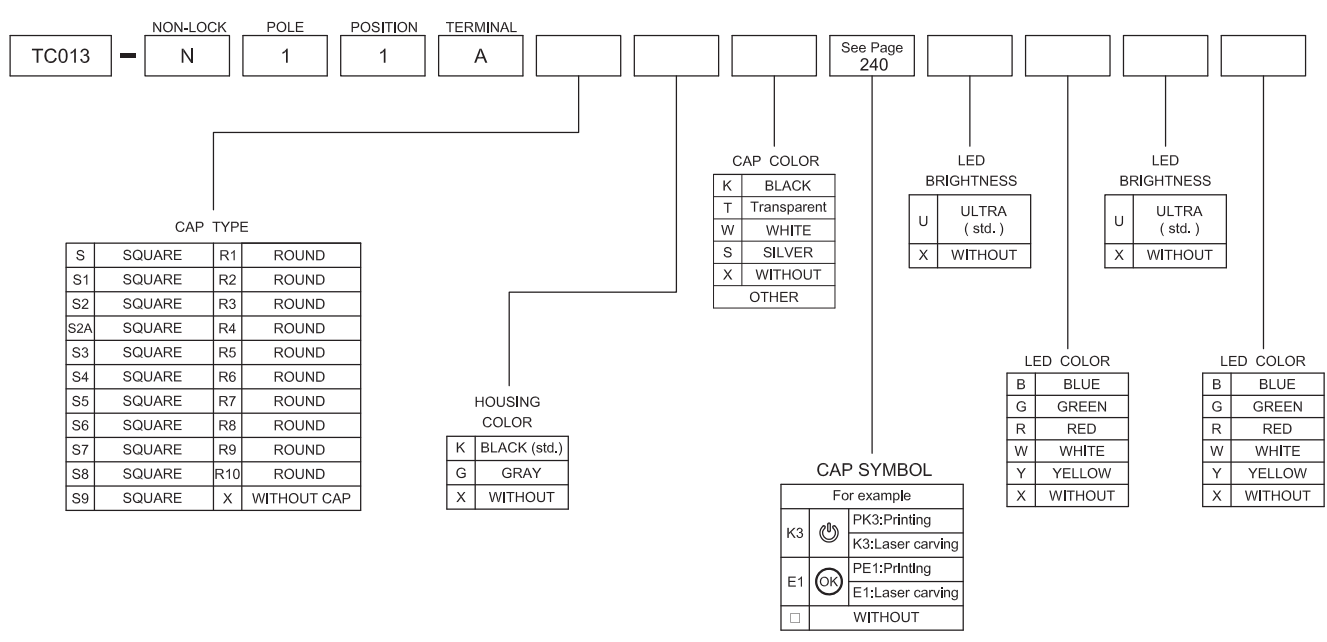


| SWITCH SPECIFICATIONS       |   |
|-----------------------------|---|
| POLE - POSITION             | 1P1T , with LED   |
| CONTACT RATING              | 12 V DC , 50 mA   |
| CONTACT RESISTANCE          | 100 mΩ MAX. 1.5 V DC ; 100 mA , by Method of Voltage DROP |
| INSULATION RESISTANCE       | 100 MΩ MIN. 500 V DC                                      |
| DIELECTRIC STRENGTH         | Breakdown is not Allowable ; 500 V AC for 1 Minute        |
| OPERATING FORCE             | 180 ± 50 gf   |
| OPERATING LIFE              | 500,000 cycles  |
| OPERATING TEMPERATURE RANGE | -40°C ~ 85°C  |
| TOTAL TRAVEL                | 0.2 ± 0.1 mm  |

| LED SPECIFICATIONS   |      |                   |            |      |        |        |       |       |
|--|------|-------------------|------------|------|--------|--------|-------|-------|
| ATTENTION<br>LEDs are Electrostatic Sensitive devices<br>(+) ○ (−) | Unit | Value / LED Color |            |      |        |        |       |       |
|  |      | Blue (5mA)        | Pure Green | Red  | Yellow | Orange | Green | White |
| LUMINOUS INTENSITY@20mA I <sub>v</sub>                             | mcd  | 25                | 180        | 200  | 200    | 250    | 55    | 250   |
| Dominant Wavelength λ <sub>D</sub>                                 | nm   | 470               | 525        | 630  | 590    | 601    | 567   | /     |
| FORWARD VOLTAGE@20mA V <sub>f</sub>                                | V    | 2.8               | 3.2        | 1.95 | 2      | 2.1    | 2.1   | 4     |

■ A single bin cannot be ordered, please contact us in advance if you need a particular bin sorting before placing your order to clarify the lead time, MOQ and pricing

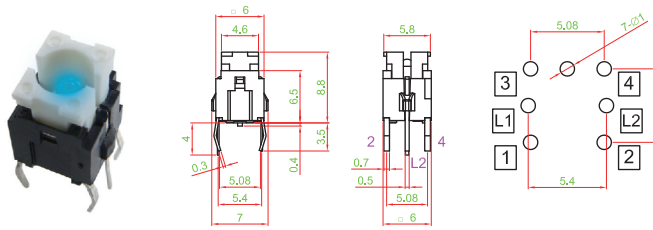
### ▶ HOW TO ORDER



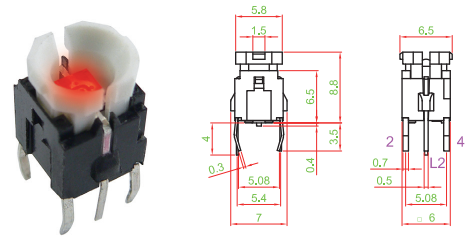


► **DIMENSION**

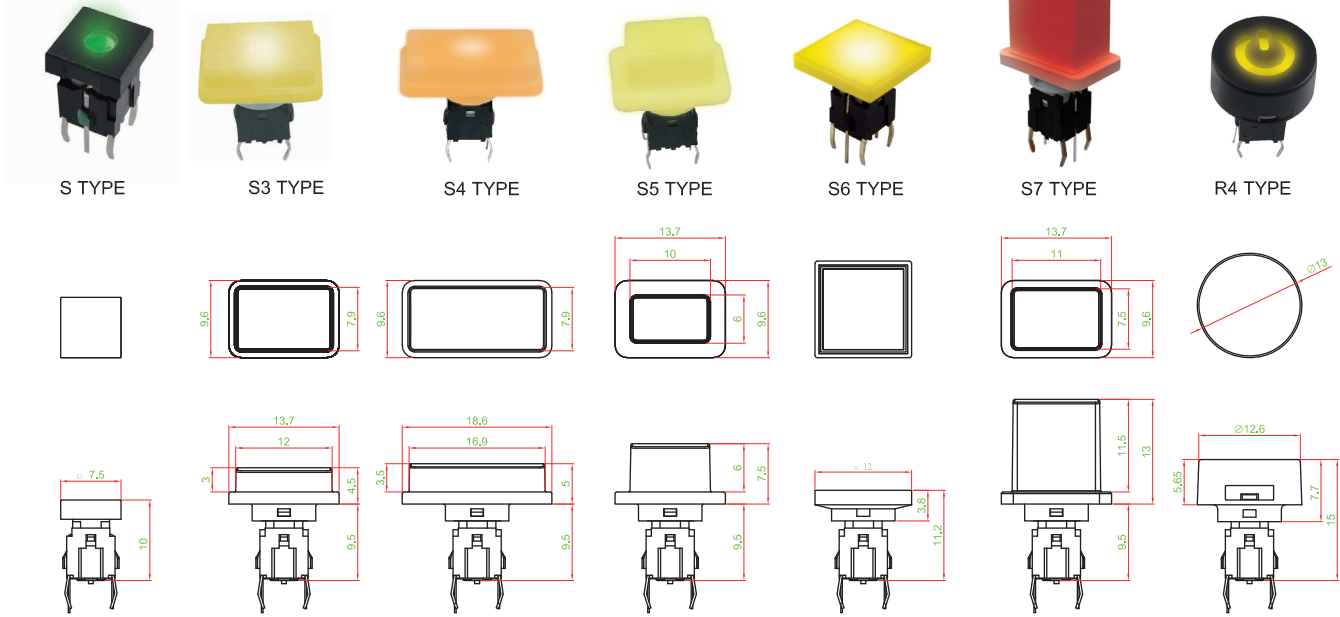
TC013-N11AXXX□□□□



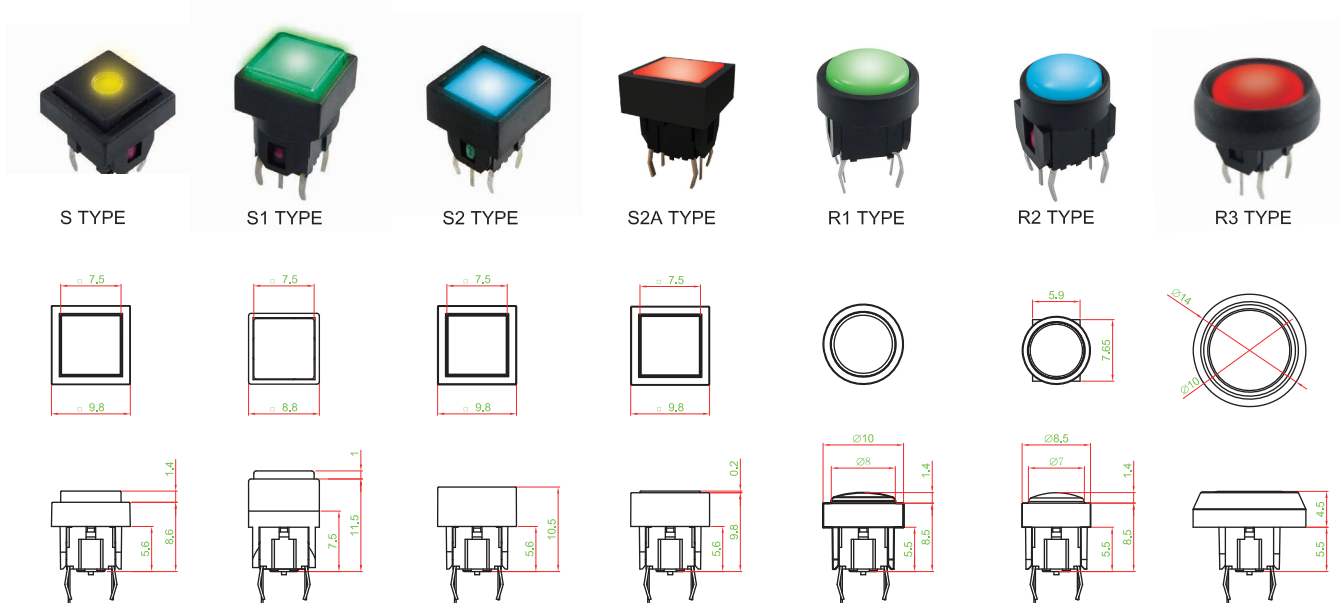
TC013-N11AS1XX□□□□



► **CAP TYPE (NO HOUSING/ CAP ONLY)**



► **CAP WITH HOUSING**



TACT SWITCH

PUSH BUTTON SWITCH

LED TOUCH SENSOR SWITCH

5 DIRECTION NAVIGATION SWITCH WITH LED

MEMBRANE SWITCH

LED LIGHT BAR

SLIDE SWITCH

ROTARY SWITCH

ROCKER SWITCH

DETECT SWITCH

ENCODER

INTERRUPTER

MINIATURE MICRO SWITCH

TELEPHONE HOOK SWITCH

DOOR SWITCH

MINI SIZE SOCKET

KNOB

CAP SYMBOL

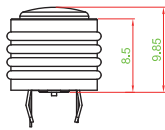
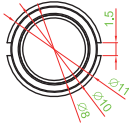


- TACT SWITCH
- PUSH BUTTON SWITCH
- LED TOUCH SENSOR SWITCH
- 5 DIRECTION NAVIGATION SWITCH WITH LED
- MEMBRANE SWITCH
- LED LIGHT BAR
- SLIDE SWITCH
- ROTARY SWITCH
- ROCKER SWITCH
- DETECT SWITCH
- ENCODER
- INTERRUPTER
- MINIATURE MICRO SWITCH
- TELEPHONE HOOK SWITCH
- DOOR SWITCH
- MINI SIZE SOCKET
- KNOB
- CAP SYMBOL

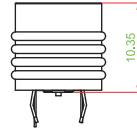
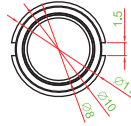
▶ CAP WITH HOUSING



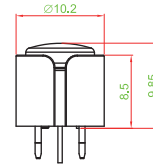
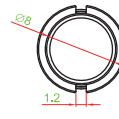
R5 TYPE



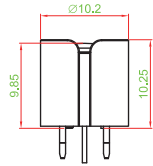
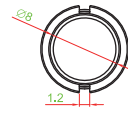
R6 TYPE



R7 TYPE (ODM)



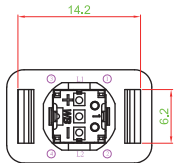
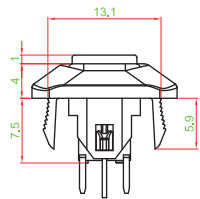
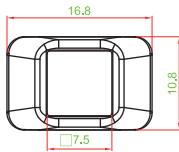
R8 TYPE (ODM)



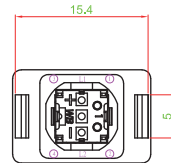
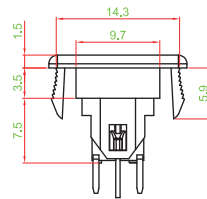
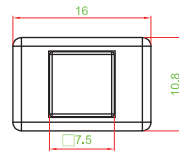
▶ CAP WITH HOUSING (PANEL MOUNT)



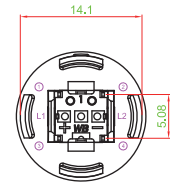
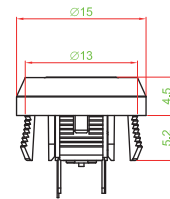
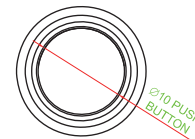
S8 TYPE



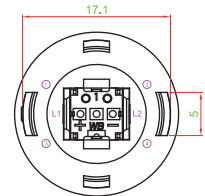
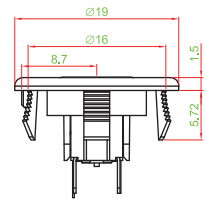
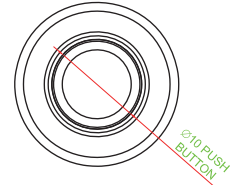
S9 TYPE



R9 TYPE



R10 TYPE



▶ PANEL CUT OUT

| PANEL THICK | W           |
|-------------|-------------|
| 0.75 ~ 1.25 | 13.2 ~ 13.3 |
| 1.25 ~ 2.0  | 13.3 ~ 13.4 |
| 2.0 ~ 3.0   | 13.4 ~ 13.5 |

▶ PANEL CUT OUT

| PANEL THICK | W           |
|-------------|-------------|
| 0.75 ~ 1.25 | 14.4 ~ 14.5 |
| 1.25 ~ 2.0  | 14.5 ~ 14.6 |
| 2.0 ~ 3.0   | 14.6 ~ 14.7 |

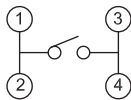
▶ PANEL CUT OUT

| Z         | D           |
|-----------|-------------|
| 0 ~ 0.5   | 13.0 ~ 13.1 |
| 0.5 ~ 2.0 | 13.1 ~ 13.2 |
| 2.0 ~ 2.5 | 13.2 ~ 13.4 |
| 2.5 ~ 3.0 | 13.4 ~ 13.6 |
| 3.0 ~ 3.5 | 13.6 ~ 13.8 |

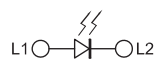
▶ PANEL CUT OUT

| Z         | D           |
|-----------|-------------|
| 0 ~ 0.5   | 16.0 ~ 16.1 |
| 0.5 ~ 2.0 | 16.1 ~ 16.2 |
| 2.0 ~ 2.5 | 16.2 ~ 16.4 |
| 2.5 ~ 3.0 | 16.4 ~ 16.6 |
| 3.0 ~ 3.5 | 16.6 ~ 16.8 |

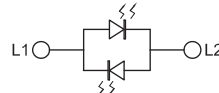
▶ CIRCUIT



SINGLE COLOR



TWO COLOR



## X-ON Electronics

Largest Supplier of Electrical and Electronic Components

*Click to view similar products for [Tactile Switches](#) category:*

*Click to view products by [Well Buying](#) manufacturer:*

Other Similar products are found below :

[6407-250V-25273P](#) [ADTSA62NV](#) [B3F-3123](#) [1977177-8](#) [1977266-1](#) [ADTSA63NV](#) [ADTSM21NSVTR](#) [ADTSM25RVTR](#) [ADTSM32NVTR](#)  
[ADTSMW64RV](#) [1977120-6](#) [FSMRA4JHA04](#) [GS4.70F300QP](#) [KSC241J SP DELTA LFS](#) [3FTL600RAS](#) [3FTL640RAS](#) [Y96K132V0FPLFS](#)  
[09158](#) [6407-250V-25343P](#) [ADTSM31NVTR](#) [2-1977120-7](#) [TSJW-5.2-260-TR](#) [TME1-01-Z](#) [Y651050400P](#) [KMT011MNGJLHS](#)  
[ADTSG648NV](#) [ADTSM62KSVTR](#) [MJTP1138DTR](#) [ADTSM648NV](#) [95C06E3RAT](#) [3ATH9Q](#) [FSMRA8JHA04](#) [HARS0073](#)  
[Y33R411N9FPLFT](#) [Y33R51139FPLFT](#) [Y31C01402FPLFS](#) [PTS645SK50SMTR92](#) [ADTSM32NVB](#) [KMS233GPWTFLG](#) [Y78B64124FP](#)  
[Y33A812C5FP LFT](#) [Y56B2D120FP LFS](#) [PTS645 DVM83-BN125-2 LFS](#) [B3W 1000G](#) [B3F 1002C](#) [B3F 0047H](#) [B3W 1002C](#) [B3F 5001G](#)  
[B3W 1100C](#) [1-1571563-4](#)